

# Software Setup Guide

This manual explains how to install and configure the software that allows the machine to be used as a printer or scanner for a computer.

**To obtain the software described in this manual, please contact your dealer or nearest authorized service representative.**

In some countries and regions, the "Software CD-ROM" is included with the product.

## Software license agreement

The Software License will appear when you download the software\*1 or install the software from the CD-ROM\*2. By downloading and using the software, you are agreeing to be bound by the terms of the Software License.

\*1 If the software is obtained from our website.

\*2 If the "Software CD-ROM" is provided with the machine.

**Table of contents**

 Page 2

**Windows**

 Page 3

**Mac OS**

 Page 18

**Troubleshooting**

 Page 21

**Before installing the software, make sure that the machine's IP address and other network settings have been configured and the machine is connected to your network.**

- The factory default setting for the IP address is to receive the IP address automatically when the machine is used in a DHCP environment.
- If the machine is used in a DHCP environment, the IP address of the machine may change. If this happens, printing will not be possible. This problem can be avoided by assigning a permanent IP address to the machine.
- When using models with wireless LAN, please refer to the provided manual for setup.

---

# Table of contents

## Windows / Select the software to be installed ..... 3

- Installing the printer driver / PC-Fax driver (common procedure) ..... 4
- Standard installation / Advanced installation ..... 5
- Custom installation ..... 7
  - Installation by specifying the machine's address ..... 8
  - Search for the machine and install the driver ..... 10
  - Using the IPP function or SSL function to print ..... 11
  - Install the driver using an existing port ..... 12
  - Installing the driver only ..... 13
- Enable options and peripherals ..... 14
- Changing the port ..... 15
- Installing the Printer Status Monitor ..... 16
- Installing the scanner driver ..... 17

## Mac OS / Installing the printer driver ..... 18

- Mac OS / Installing the printer driver ..... 18
- Printing using the IPP function ..... 20

## Troubleshooting ..... 21

- Trouble with installation (Windows/Mac OS) ..... 22
- How to setup this machine ..... 22
- Problem with Windows ..... 23
- Trouble with Mac OS ..... 24

## Please note

- The explanations in this manual assume that you have a working knowledge of your Windows or Mac OS computer.
- For information on your operating system, please refer to your operating system manual or the online Help function.
- The explanations of screens and procedures in this manual are primarily for Windows® 10 in Windows® environments, and Mac OS X v10.12 in Mac OS environments. The screens may vary depending on the version of the operating system.
- Wherever "MX-xxxx" appears in this manual, please substitute your model name for "MX-xxxx".
- In some cases it may not be possible to use the software described in this manual. This depends on the model and the expansion kits that are installed.
- This manual contains references to the fax function. However, please note that the fax function is not available in some countries and regions.
- Considerable care has been taken in preparing this manual. If you have any comments or concerns about the manual, please contact your dealer or nearest authorized service representative.
- This product has undergone strict quality control and inspection procedures. In the unlikely event that a defect or other problem is discovered, please contact your dealer or nearest authorized service representative.
- Aside from instances provided for by law, SHARP is not responsible for failures occurring during the use of the product or its options, or failures due to incorrect operation of the product and its options, or other failures, or for any damage that occurs due to use of the product.

## Warning

- Reproduction, adaptation or translation of the contents of the manual without prior written permission is prohibited, except as allowed under copyright laws.
- All information in this manual is subject to change without notice.
- The network cable that is to be connected to this machine should be a shielded cable that is compliant with the specifications.
- The display screens, messages, and key names shown in the manual may differ from those on the actual machine due to product improvements and modifications.
- The explanations in this manual are based on American English and the North American version of the software. Software for other countries and regions may vary slightly from the North American version.

## Windows / Select the software to be installed

●	<b>Printer driver / PC-Fax driver</b>	<a href="#">▶ Page 4</a>
●	<b>Printer Status Monitor</b>	<a href="#">▶ Page 16</a>
●	<b>Scanner driver</b>	<a href="#">▶ Page 17</a>

### System requirements

Before installing the software described in this manual, make sure that your computer satisfies the following requirements.

Operating system*	Windows 7, Windows 8.1, Windows 10 Windows Server 2008, Windows Server 2012
Computer type	IBM PC/AT compatible computer Equipped LAN board
Display	1024 x 768 dots resolution and 16-bit color or higher is recommended.
Other hardware requirements	An environment that allows any of the above operating systems to fully operate.

\* The Windows OS Starter Edition and Embedded Edition are not supported.  
Other editions and service packs are supported, however, it is recommended that service packs be updated to the newest available version. Including the 64-bit edition OS.

- To perform the procedures described in this manual such as installing the software and configuring settings after installation, administrator authority is required.

#### Related topics

**Printer driver:**

These allow the machine to be used as a printer.

**Printer Status Monitor:**

This allows you to monitor the status of the machine on your computer screen.

**Scanner driver (TWAIN driver):**

This allows you to use the scanner function of the machine from a TWAIN-compliant software application.

**PC-Fax driver:**


This enables you to send a file from your computer as a fax using the same procedure as when printing the file. (When the fax option is installed.)

Even if the fax function is not installed, the PC-Fax driver can be updated using the CD-ROM in the Internet fax expansion kit to enable you to send a file from your computer as an Internet fax in the same way as you print a file.

# Installing the printer driver / PC-Fax driver (common procedure)

The installation procedure in this section is for both the printer driver and the PC-Fax driver, although the explanations are centered on the printer driver.

## If you obtained the software from our website or your dealer


Extract the installer that you obtained, and double-click the [Setup] icon (  ) in the [Printer] folder.

If you have already installed a similar type of driver, an install type selection screen will appear.

- To install the printer driver, click [Add a new Sharp printer].
- To update a previously installed driver, click [Select Sharp Printer to Update].



## If the "Software CD-ROM" was included with the machine

- (1) Insert the CD-ROM in your computer, navigate to the CD-ROM, and double-click the [Setup] icon (  ).
- (2) The "SOFTWARE LICENSE" window will appear. Make sure that you understand the contents of the license agreement and then click the [Yes] button.

- You can show the "SOFTWARE LICENSE" in a different language by selecting the desired language from the language menu. To install the software in the selected language, continue the installation with that language selected.

- (3) Read the message in the "Welcome" window and then click the [Next] button.

- (4) Click the [Printer Driver] button.

To install the PC-Fax driver, click the [Utility Software] button, then click the [PC-Fax Driver] button.

## Choose an installation method.



### Standard installation



Quickly installs the PCL6 printer driver.

### Advanced installation\*

Selects the printer driver to install.

\* Will not be setup for the PC-Fax driver.

### Custom installation



Detailed setup such as specifying the IP address or IPP function/SSL function.

## Related topics

### PCL6 printer driver

The machine supports the Hewlett-Packard PCL6 printer control languages.

### PS printer driver\*

The PS printer driver supports the PostScript 3 page description language developed by Adobe Systems Incorporated.

### PPD driver\*

The PPD driver enables the machine to use the standard Windows PS printer driver.

\* Depending on the model, the PS3 expansion kit is required.

- This manual contains explanations of the PC-Fax driver and PPD driver. However, please note that the PC-Fax driver and PPD driver are not available and do not appear on the software for installation in some countries and regions. In this case, please install the English version if you want to use these drivers.

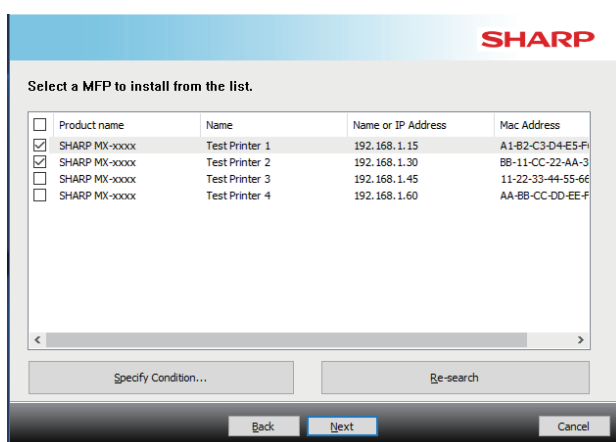
## Standard installation / Advanced installation

### 1 Click the [Standard installation] button or the [Advanced installation] button.

Refer to "Installing the printer driver / PC-Fax driver (common procedure) (page 4)" on how to display the "Choose an installation method" screen.

### 2 Select the machine and click the [Next] button.

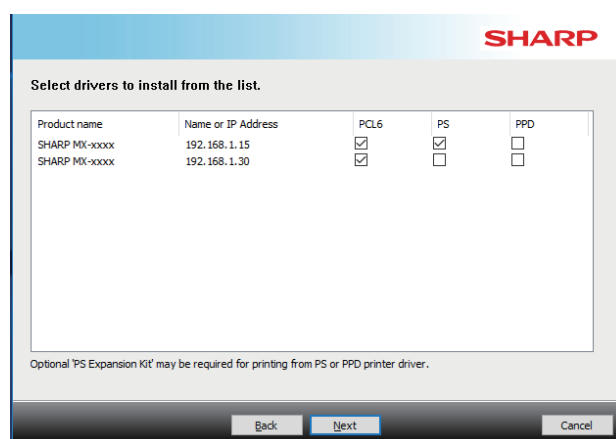
You can also click the [Specify Condition] button and search for the machine by entering the machine's name (host name) or IP address, or selecting the search period.



- This screen is not displayed when only 1 device is found in the search results.
- If the machine is not found, make sure that the machine is powered on and that the machine is connected to the network, and then click the [Re-search] button.

### 3 Select the printer driver to be installed and click the [Next] button. (Advanced installation only)

Click the checkbox of the printer driver to be installed so that a checkmark (☑) appears.



- When installing the PC-Fax Driver, this screen is not displayed.

### 4 Check the contents and then click the [Next] button.

#### Related topics

When [Standard installation] or [Advanced installation]\* is selected, the installation will take place as indicated below.

- Machine connection method: LPR Direct Print (Auto Search)
- Printer driver\*: Standard installation: PCL6  
Advanced installation: Select from PCL6, PS, PPD
- Printer driver name: Cannot be changed
- Display fonts\*: Installed

\* Will not be setup for the PC-Fax driver.

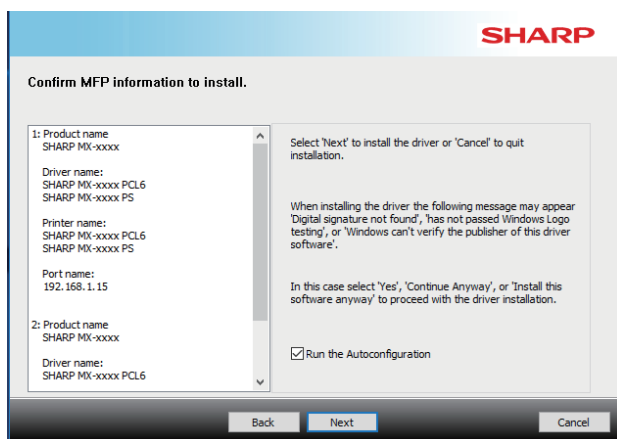
- Custom installation (P. 7)

## 5 Follow the on-screen instructions.

Read the message in the window that appears and click the [Next] button.

Installation begins.

Set the [Run the Autoconfiguration] checkbox to  and install. The options of this machine and the condition of the peripherals can be reflected in the configuration.



- If a warning window regarding security is displayed, do not forget to click [Install].

## 6 When the installation completed screen appears, click the [Finish] button.

- To set the installed driver as the default printer, select the name of the machine from "Set as default printer". If you don't want to change the default printer, select [Don't change].
- To print a test page, click [Print test page]. (Printer driver only)

### This completes the installation.

After the installation, a message prompting you to restart your computer may appear. If this message appears, click the [Yes] button to restart your computer.

### Related topics

- Windows / Select the software to be installed (P. 3)
- Enable options and peripherals (P. 14)

### Troubleshooting

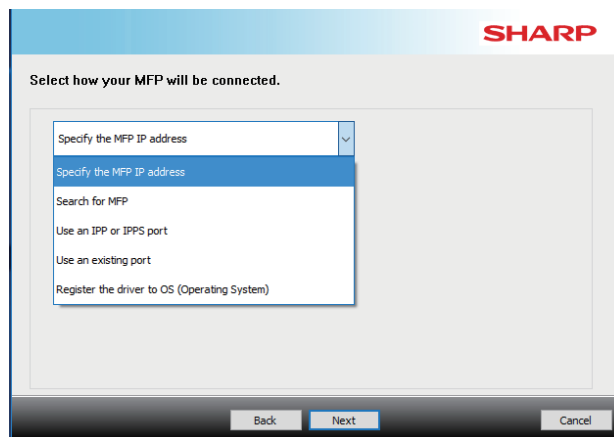
- The software cannot be installed (P. 22)
- How to check the IP address of this machine (P. 22)
- The machine is not detected (P. 23)

## Custom installation

Custom install is used to make detailed configuration.

**1** Click the [Custom installation] button.  
Refer to "Installing the printer driver / PC-Fax driver (common procedure) (page 4)" on how to display the "Choose an installation method" screen.

**2** Select how your MFP will be connected.



### Specify the MFP IP address

▶ Page 8

When the machine cannot be found because it is not powered on or otherwise, installation is possible by entering the name (host name) or IP address of the machine.

### Search for MFP

▶ Page 10

Find the machine connected to the network and install the driver. The procedure for finding the machine is the same as in "Standard installation", but you can also configure advanced settings.

### Use an IPP or IPPS port

▶ Page 11

Using the IPP function, even when the printer is placed remotely, it can be used as a fax machine and high quality print is possible. By using the SSL function at the same time, encrypted data can be sent.

### Use an existing port

▶ Page 12

Install the driver using an existing port on your computer. You can also create a new port.

### Register the driver to OS (Operating System)

▶ Page 13

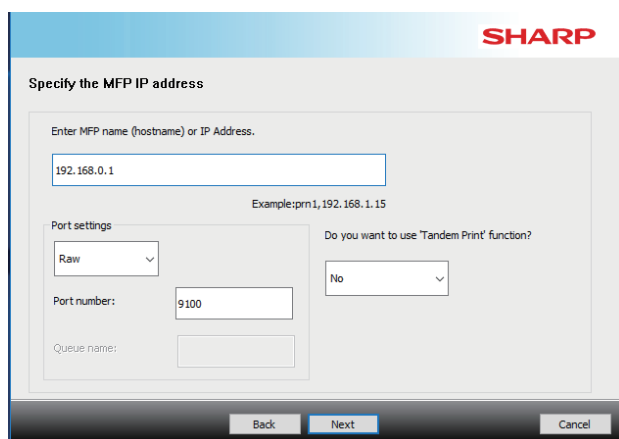
Even if the printer is not connected to LAN, it is possible to install the printer driver.

## Installation by specifying the machine's address

- 1** When you are asked how the printer is connected, select [Specify the MFP IP address] and click the [Next] button.

Refer to "[Custom installation \(page 7\)](#)" on how to display the custom installation screen.

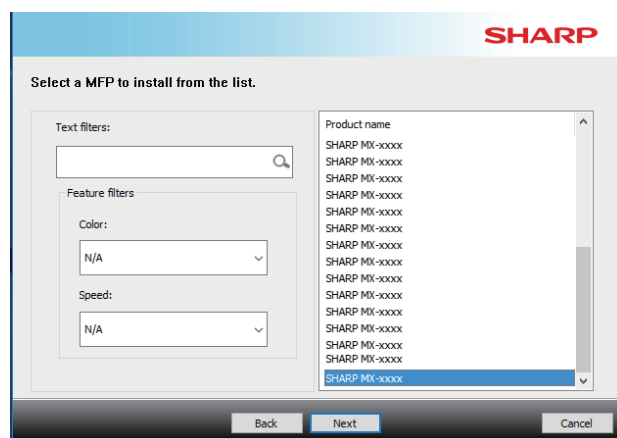
- 2** Enter the name (host name) or IP address of the machine and click the [Next] button.



- Configure port settings if needed. (Normally no changes are needed.)
- If you will use the tandem print function, select [Yes]. (Printer driver only)

- 3** When the model selection window appears, select the model name of your machine and click the [Next] button.

You can filter the list by part of the model name, color type, or speed.



### Related topics

- Windows / Select the software to be installed (P. 3)

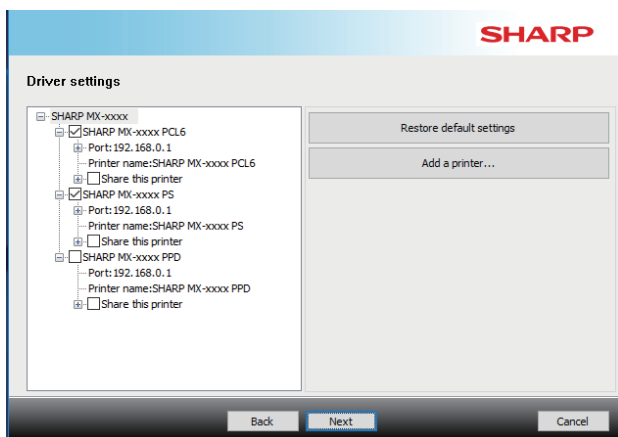
### Troubleshooting

- The software cannot be installed (P. 22)
- How to check the IP address of this machine (P. 22)



#### 4 When the printer driver selection window appears, select the printer driver to be installed and click the [Next] button.

Click the checkbox of the printer driver to be installed so that a checkmark () appears.



- You can click [Printer name] to change the printer name.
  - By selecting the model name from the list and clicking [Add a printer], you can copy the driver settings and install multiple drivers for the same model, each with a different name. (Printer driver only)
  - To share the printer, select the [Share this printer] checkbox .
- If the client computer runs a different version of the operating system than your version, select the [Install additional driver] checkbox . (Printer driver only)

#### 5 Follow the instructions on the screen and proceed with installation.

- Check the content of the displayed screen. Click the [Next] button to proceed with installation.
- Set the [Run the Autoconfiguration] checkbox to  and install. The options of this machine and the condition of the peripherals can be reflected in the configuration. (Printer driver only)
- If the display font is installed, set the [Install Display Font] checkbox to . (Printer driver only)
- If a warning window regarding security is displayed, do not forget to click [Install].

#### 6 Click the [Finish] button.

- To set the installed driver as the default printer, select the name of the machine from "Set as default printer". If you don't want to change the default printer, select [Don't change].
- To print a test page, click [Print test page]. (Printer driver only)

#### This completes the installation.

After the installation, a message prompting you to restart your computer may appear. If this message appears, click the [Yes] button to restart your computer.

#### Related topics

- Windows / Select the software to be installed (P. 3)
- Enable options and peripherals (P. 14)
- Changing the port (P. 15)

#### Troubleshooting

- The software cannot be installed (P. 22)

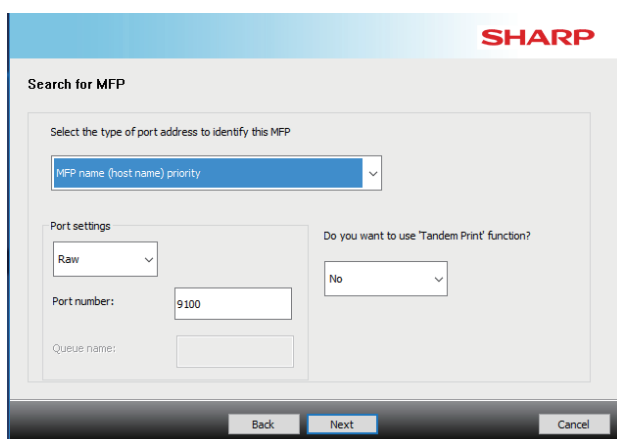
## Search for the machine and install the driver

- 1** When you are asked how the printer is connected, select [Search for MFP] and click the [Next] button.

Refer to "[Custom installation \(page 7\)](#)" on how to display the custom installation screen.

- 2** Select the search method.

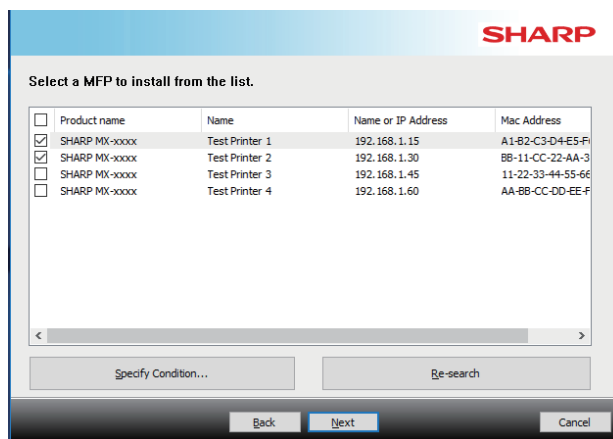
Select the name of this machine (host name) or IP address, then click the [Next] button.



- Configure port settings if needed. (Normally no changes are needed.)
- If you will use the tandem print function, select [Yes]. (Printer driver only)

- 3** When the model selection window appears, select the model name of your machine and click the [Next] button.

You can also click the [Specify Condition] button and search for the machine by entering the machine's name (host name) or IP address, or selecting the search period.



<input type="checkbox"/>	Product name	Name	Name or IP Address	Mac Address
<input checked="" type="checkbox"/>	SHARP MX-xxxx	Test Printer 1	192.168.1.15	A1-B2-C3-D4-E5-F6
<input checked="" type="checkbox"/>	SHARP MX-xxxx	Test Printer 2	192.168.1.30	BB-11-CC-22-AA-33
<input type="checkbox"/>	SHARP MX-xxxx	Test Printer 3	192.168.1.45	11-22-33-44-55-66
<input type="checkbox"/>	SHARP MX-xxxx	Test Printer 4	192.168.1.60	AA-BB-CC-DD-EE-FF

- 4** Follow the instructions on the screen and proceed with installation.

For detailed procedures, refer to Step 4 onwards of "[Installation by specifying the machine's address \(page 8\)](#)".

**This completes the installation.**

### Related topics

- Windows / Select the software to be installed (P. 3)
- Enable options and peripherals (P. 14)

### Troubleshooting

- The software cannot be installed (P. 22)
- How to check the IP address of this machine (P. 22)

## Using the IPP function or SSL function to print

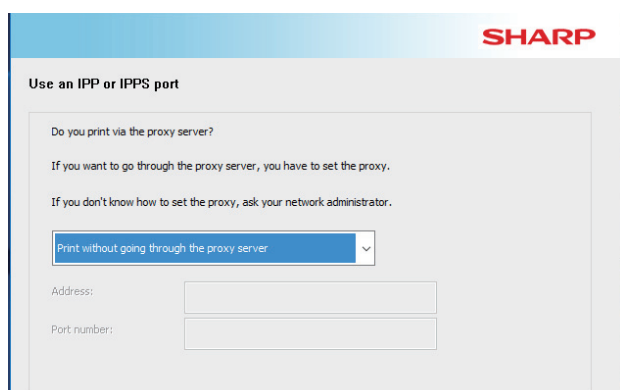
To use the SSL function, please setup the "SSL Settings" of this machine. For instructions, please download the manual from the website of the machine.

### 1 When you are asked how the printer is connected, select [Use an IPP or IPPS port] and click the [Next] button.

Refer to "[Custom installation \(page 7\)](#)" on how to display the custom installation screen.

### 2 If a proxy server is used, specify the proxy server and click the [Next] button.

To specify a proxy server, select [Print via the following proxy server] and then enter the [Address] and [Port number].



### 3 Enter the machine's URL and click the [Next] button.

Enter the URL in the following format:

#### Normal format:

http://<the machine's domain name or IP address\*1>:631\*2/ipp

#### When SSL is used:

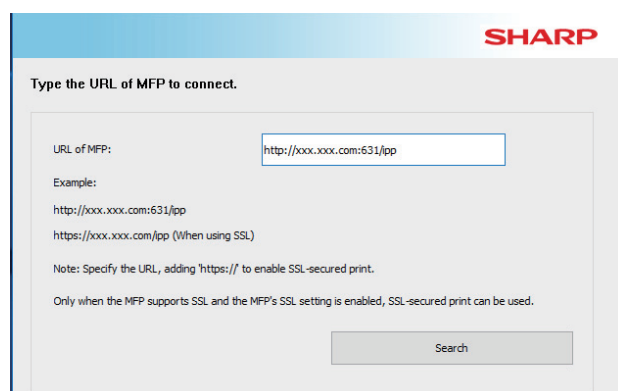
https://< the machine's domain name or IP address\*1>:<port number\*3>/ipp

\*1 When entering an IPv6 address, enclose the IP address with brackets [ ].

Example: IP address 2001:1::a → http://[2001:1::a]:631/ipp

\*2 Normally "631" should be entered for the port number. If the IPP port number has been changed on the machine, enter the new port number.

\*3 Normally the port number and the colon ":" immediately preceding the port number can be omitted. If the IPP port number for SSL has been changed on the machine, enter the new port number.



- If your computer and the machine are connected to the same local area network, you can click the [Search] button to search for the machine. The machine's URL will appear. Select the URL and click the [Next] button.

### 4 Follow the instructions on the screen and proceed with installation.

For detailed procedures, refer to Step 3 onwards of "[Installation by specifying the machine's address \(page 8\)](#)".

**This completes the installation.**

#### Related topics

- Windows / Select the software to be installed (P. 3)
- Enable options and peripherals (P. 14)

#### Troubleshooting

- The software cannot be installed (P. 22)
- How to check the IP address of this machine (P. 22)

## Install the driver using an existing port

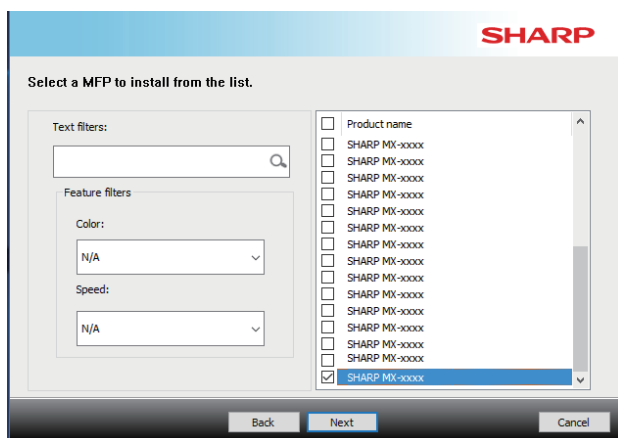
Install the driver using an existing port on your computer. You can also create a new port.

### 1 Select [Use an existing port] and click the [Next] button.

Refer to "[Custom installation \(page 7\)](#)" on how to display the custom installation screen.

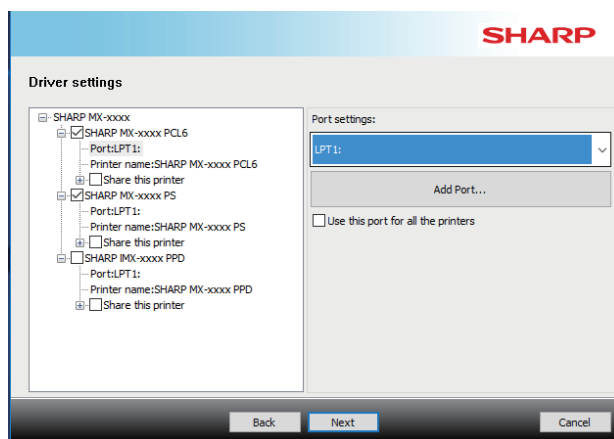
### 2 When the model selection window appears, select the model name of your machine and click the [Next] button.

You can filter the list by part of the model name, color type, or speed.



### 3 Select the port.

- You can click a [Port] that you want to change in the list and select the desired port.
- To create a new port, click [Add Port]. For detailed procedures, refer to Step 4 onwards of "[Changing the port \(page 15\)](#)".



### 4 Follow the instructions on the screen and proceed with installation.

For detailed procedures, refer to Step 5 onwards of "[Installation by specifying the machine's address \(page 8\)](#)".

**This completes the installation.**

#### Related topics

- Windows / Select the software to be installed (P. 3)
- Enable options and peripherals (P. 14)
- Changing the port (P. 15)

#### Troubleshooting

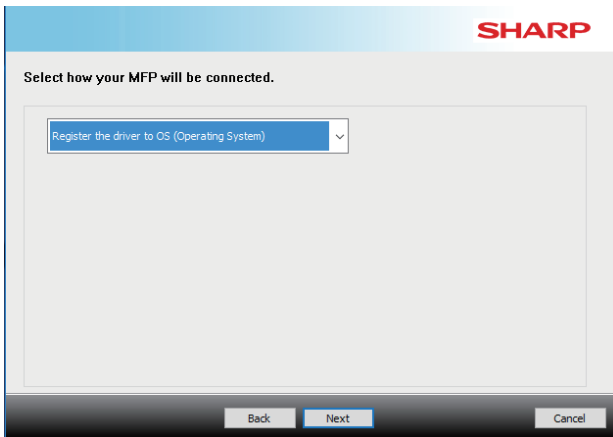
- The software cannot be installed (P. 22)

## Installing the driver only

It is not possible to install only the driver on a PC-Fax Driver. The menu will only show the printer driver.

### 1 Select [Register the driver to OS (Operating System)] and click the [Next] button.

Refer to "[Custom installation \(page 7\)](#)" on how to display the custom installation screen.



### 2 Confirm the content of the screen, and click the [Next] button.

Installation begins. When the complete screen is displayed, click [Finish].

- If a warning window regarding security is displayed, do not forget to click [Install].

---

#### Related topics

- [Windows / Select the software to be installed \(P. 3\)](#)

## Enable options and peripherals

### 1 Click the [Start] button, select [Settings] → [Device] → [Devices and Printers].

In Windows 8.1/Windows Server 2012, right-click the [Start] button, select [Control Panel] → [View devices and printers] (or [Devices and Printers]).

In Windows 7/Windows Server 2008, click the [Start] button, click [Control Panel], and then click [Devices and Printers].

### 2 Open the printer properties window.

- (1) Right-click the printer driver icon of the machine.
- (2) Select [Printer properties].

### 3 Click the [Configuration] tab.

### 4 Click the [Auto Configuration] button.

The settings are automatically configured based on the detected machine status.

### 5 Click the [OK] button in the printer properties window.

When using the PPD driver, when the "Printer property screen" is displayed in step 2, follow the steps below:

- (1) Click the [Device Settings] tab.
- (2) Configure each item based on the machine configuration.

The items and the procedures for configuring the items vary depending on the operating system version.

---

#### Related topics

- Windows / Select the software to be installed (P. 3)
- Changing the port (P. 15)

#### Troubleshooting

- The software cannot be installed (P. 22)
- How to check the status of the peripherals (P. 22)
- Problem with Windows (P. 23)
- The options and peripherals of this machine could not be automatically setup (P. 23)

## Changing the port

### 1 Click the [Start] button, select [Settings] → [Device] → [Devices and Printers].

In Windows 8.1/Windows Server 2012, right-click the [Start] button, select [Control Panel] → [View devices and printers] (or [Devices and Printers]).

In Windows 7/Windows Server 2008, click the [Start] button, click [Control Panel], and then click [Devices and Printers].

If the printer driver is installed using a "Custom installation" with "Use an IPP or IPPS port" selected, the "SC-Print2005 Port" is added.

Follow the on-screen instructions.

- The "SC2 TCP/IP Port" is added when the printer driver is installed using a "Custom installation" with "Specify the MFP IP address" or "Search for MFP" selected.
- The "SC2 TCP/IP Port" cannot be used if the machine is connected to an IPv6 network.

### 2 Open the printer properties window.

- (1) Right-click the printer driver icon of the machine.
- (2) Select [Printer properties].

### 5 Click the [Close] button in the screen of step 4.

### 3 Adding or changing a port.

- (1) Click the [Ports] tab.
- (2) Click the [Add Port] button.

- To change to an existing port, select the port from the list and click the [Apply] button.

### 6 Click the [Apply] button in the screen of step 3.

- When using a port created using "Standard TCP/IP Port", in the screen that appears after you click the [Configure Port] button in the screen of step 3, make sure the [SNMP Status Enabled] checkbox is not selected (). If the [SNMP Status Enabled] checkbox is selected () , it may not be possible to print correctly.

### 4 Select the port type and click the [New Port] button.

#### • Standard TCP/IP Port

This is the standard printer port provided by the operating system.

- (1) Click the [Next] button.
- (2) Enter the machine's IP address in [Printer Name or IP Address] and click the [Next] button.
- (3) Click the [Finish] button.

#### • SC2 TCP/IP Port

Use this port if you will use Tandem Print on an IPv4 network.

- (1) Enter the machine's IP address.
- (2) Make sure that [LPR] is selected.
- (3) Make sure that [lp] is entered.
- (4) Click the [OK] button.

#### • SC-Print2005 Port

#### Related topics

- Windows / Select the software to be installed (P. 3)
- Install the driver using an existing port (P. 12)

#### Troubleshooting

- The software cannot be installed (P. 22)
- How to check the IP address of this machine (P. 22)
- Problem with Windows (P. 23)

# Installing the Printer Status Monitor

With this software, it is possible to check the print status, existence of a finisher, paper size, and remained paper on the computer screen. Status monitor cannot be used when the IPP function is used.

## 1 Download the Printer Status Monitor from our website and execute installation.

For more information, consult your dealer or nearest authorized service representative.

## 2 Follow the on-screen instructions.

## 3 When the installation completed screen appears, click the [Finish] button.

To have the Printer Status Monitor start automatically when your computer is started, select the [Add this program to your Startup folder] checkbox  and click the [Finish] button.

### This completes the installation.

After the installation, a message prompting you to restart your computer may appear. If this message appears, click the [Yes] button to restart your computer.

- For the procedures for using the Printer Status Monitor, see the Help file. Click the Windows [Start] button, select [All apps] (or [All Programs]), select [SHARP Printer Status Monitor] and then select [Help]. (In Windows 8.1, select [Help] from the "SHARP Printer Status Monitor" menu in the Apps window.)

---

### Related topics

- Windows / Select the software to be installed (P. 3)

### Troubleshooting

- The software cannot be installed (P. 22)
- Problem with Windows (P. 23)



# Installing the scanner driver

## 1 Double-click the [Setup] icon (📄).

**If you obtained the software from our website or your dealer**

Extract the installer that you obtained, and double-click the [Setup] icon in the folder. Continue with the next steps.

**If the "Software CD-ROM" was included with the machine**

Insert the "Software CD-ROM" into your computer, navigate to the CD-ROM, double-click the [Setup] icon, and click [Utility Software] - [Scanner Driver (TWAIN)].

- You can show the "SOFTWARE LICENSE" in a different language by selecting the desired language from the language menu. To install the software in the selected language, continue the installation with that language selected.

## 2 Follow the on-screen instructions.

Read the message in the window that appears and click the [Next] button.

## 3 When the finish setup window appears, click the [OK] button.

After the installation, a message prompting you to restart your computer may appear. If this message appears, click the [Yes] button to restart your computer.

## 4 Click the Windows [Start] button, select [All apps] (or [All Programs]), select [SHARP MFP TWAIN K\*] and then select [Select Device].

In Windows 8.1, select [Select Device] from the "SHARP MFP TWAIN K\*" menu in the Apps window.

\* The characters and number may vary by model.

## 5 Click the [Search] button.

If you know the IP address, you can click the [Input] key and enter the IP address without searching.

## 6 Select the IP address of the machine from the "Address" menu and click the [OK] button.

- Be sure to ask your system administrator (network administrator) for the IP address of the machine.
- The name (host name) or IP address of the machine can be directly entered in "Address".
- If the port number used by the scanner function of the machine has been changed, enter a colon ":" following the IP address and then enter the port number. (Normally the port number does not need to be entered.)

## 7 Click the [OK] button.

**This completes the configuration of the scanner driver.**

### Related topics

- Windows / Select the software to be installed (P. 3)

### Troubleshooting

- The software cannot be installed (P. 22)
- How to check the IP address of this machine (P. 22)
- Problem with Windows (P. 23)

## Mac OS / Installing the printer driver

This section explains how to install and setup the printer driver when using this machine in a Mac OS environment.

### 1 Double-click the [MacOSX] folder.

**If you obtained the software from our website or your dealer**

Extract the installer that you obtained, and double-click the [MacOSX] folder.

**If the "Software CD-ROM" was included with the machine**

(1) Insert the "Software CD-ROM" into your computer's CD-ROM drive.

(2) Double-click the [CD-ROM] icon on the desktop.

(3) Double-click the [MacOS] folder.

(4) Double-click the DMG file.

(5) Double-click the [MacOSX] folder.

Before installing the software, be sure to read "ReadMe First". "ReadMe First" is in the [US-English] folder ([English] folder in areas other than the U.S.) in the [Readme] folder.

### 2 Double-click the folder corresponding to the versions of the operating system.

### 3 Double-click the [MX-C52\*] icon.

\* The characters and number may vary by model.

### 4 Click the [Continue] button.



### 5 Make sure that you understand the contents of the license agreement and then click the [Continue] button.

- If the license appears in the different language, change the language in the language menu.

### 6 Click the [Agree] button.

### 7 Click the [Install] button.

Installation begins.

- If the "Authenticate" window appears, enter the password and click the [Install Software] (or [OK]) button.

### 8 When the installation completed screen appears, click the [Close] button.

**This completes the installation of the software. Next, configure the printer driver settings.**

### 9 Click [System Preferences] in the Apple menu and select [Printers & Scanners]\*.

\* Mac OS X v10.6 - 10.8: [Print & Scan] or [Print & Fax]

### 10 Click the [+] button and select [Add Printer or Scanner].

#### Related topics

##### System requirements (Operating system):

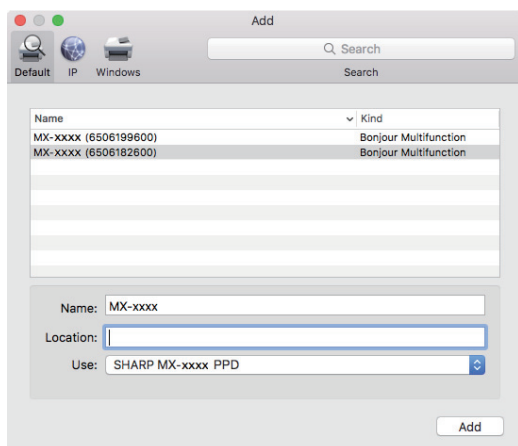
- Mac OS X 10.6 -10.12
- Depending on the model used, a PS3 expansion kit is required.
- The scanner driver and PC-Fax driver cannot be used in a Mac OS environment.

- Printing using the IPP function (P. 20)

#### Troubleshooting

- The software cannot be installed (P. 22)
- How to setup this machine (P. 22)
- Trouble with Mac OS (P. 24)

## 11 Click the [Default] icon.



## 12 Click the machine's model name.

The model name is normally displayed as below:  
<Model name> (<Serial number>)

## 13 Make sure that the PPD file of your model is selected.

The PPD file of the machine is automatically selected.

## 14 Click the [Add] button.

- The PPD file is installed in the following folders on the startup disk.  
[Library] - [Printers] - [PPDs] - [Contents] - [Resources]

## 15 Click the printer icon, click the [Options & Supplies] button and click the [Option] (or [Driver]) tab.

## 16 Match the product configuration of this machine.

If the condition of this machine was automatically detected, check whether the settings are correct.

If the settings are incorrect, or it is necessary to manually setup, follow the steps below:

- (1) Select the peripherals connected to the machine
- (2) Click the [OK] button

**This completes the configuration of the printer driver.**

- You can check the options that are installed on the machine by printing out the "Machine Status List".  
To print the [Machine Status List]: [Settings] → [Status] → [List for User] → [Print]

### Related topics

- Printing using the IPP function (P. 20)

### Troubleshooting

- The software cannot be installed (P. 22)
- How to setup this machine (P. 22)
- Trouble with Mac OS (P. 24)

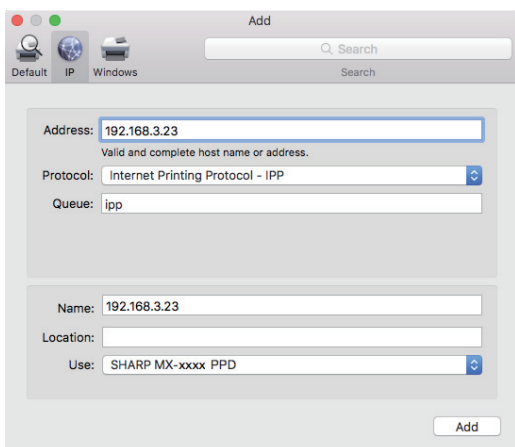
## Printing using the IPP function

You can use the machine like a fax, by printing data on a machine placed remotely.

### 1 Display the [Printer browser] screen.

Refer to steps 1-10 of "[Mac OS / Installing the printer driver \(page 18\)](#)" for how to display the screen.

### 2 Click the [IP] icon.



### 3 Select [IPP] in "Protocol".

### 4 Enter the address of the machine (IP address or domain name) and the queue name.

### 5 Enter "ipp" in "Queue".

### 6 Make sure that the PPD file of your model is selected.

The PPD file of the machine is automatically selected.

### 7 Click the [Add] button.

### 8 Proceed with setup.

#### Related topics

- [Printing using the IPP function \(P. 20\)](#)

#### Troubleshooting

- [The software cannot be installed \(P. 22\)](#)
- [How to setup this machine \(P. 22\)](#)
- [Trouble with Mac OS \(P. 24\)](#)

# Troubleshooting

This section explains common concerns, questions and countermeasures when installing the printer driver or software.

## **Trouble with installation (Windows/Mac OS) ..... 22**

- The software cannot be installed ..... 22

## **How to setup this machine ..... 22**

- How to check the IP address of this machine ..... 22
- How to check the status of the peripherals ..... 22

## **Problem with Windows ..... 23**

- The machine is not detected ..... 23
- The options and peripherals of this machine could not be automatically setup ..... 23
- Removing the software ..... 24

## **Trouble with Mac OS ..... 24**

- The machine is not detected ..... 24
- Removing the software ..... 24

## Trouble with installation (Windows/Mac OS)

### ! The software cannot be installed

CHECK

Is there sufficient free space on your hard drive?

Solution

Delete any unneeded files and applications to increase free space on your hard drive.

CHECK

Are you using an operating system that is not supported?

Solution

Make sure that the software can run on your operating system.

⇒ [Windows / Select the software to be installed \(page 3\)](#)

⇒ [Mac OS / Installing the printer driver \(page 18\)](#)

## How to setup this machine

### ! How to check the IP address of this machine

CHECK

You can check the IP address on the machine.

Solution

Tap the [Settings] key in the home screen, select [Status] → [Network Status].

### ! How to check the status of the peripherals

CHECK

Check the status of the peripherals following the steps below:

Solution

The "Machine Status List" will print. Print the "Machine Status List" in the machine's settings by tapping [Settings] → [Status] tab → [List for User] → [Machine Status List].

## Problem with Windows

### ! The machine is not detected

CHECK

Is your computer connected to the same network as this machine?

Solution

The computer and this machine must be connected on the same LAN to be detected. When they are connected to a different subnetwork, click the [Specify Condition] button and input the name of this machine (host name) or IP address and search again.

CHECK

Is your computer connected correctly to the machine?

Solution

Make sure that the cable is connected securely to the LAN connectors on your computer and the machine. Check the connections at the hub as well.

CHECK

Is the machine power on?

Solution

If the machine is powered off, it will not be detected. Switch on the main power switch and search again after powering on the machine.

### ! The options and peripherals of this machine could not be automatically setup

CHECK

If automatic setup of the options and peripherals is not possible, setup manually.

To setup the options ⇒ [Enable options and peripherals \(page 14\)](#)

Solution

Check the status of the attached peripherals following the steps below and setup the options.

1) Print the "Machine Status List" in this machine's settings, and check the settings for peripheral devices and trays.

To print the "Machine Status List", tap the [Settings] key, and then tap the [Status] tab → [List for User] → [Machine Status List].

2) For [Set Tray Status], [Paper Type Name] and [Set Tandem Print], click the respective button and check the setting details.

#### Set Tray Status:

In the machine's system settings, the settings in [Common Settings] → [Paper Settings] → [Paper Tray Settings] are applied. Specify the paper size and type which has been set for each tray.

#### Paper Type Name:

In the machine's system settings, the settings in [Common Settings] → [Paper Settings] → [Paper Type Registration] are applied. If the name of a user type has been changed, enter the new name.

#### Set Tandem Print:

In the machine's system settings (for Administrator), enter the setting (client IP address) for [Common Settings] → [Device Control] → [Tandem Connection Setting]. [Tandem Connection Setting] can be set by selecting [Specify the MFP IP address] or [Search for MFP] in the [Custom installation] screen (only when installed).

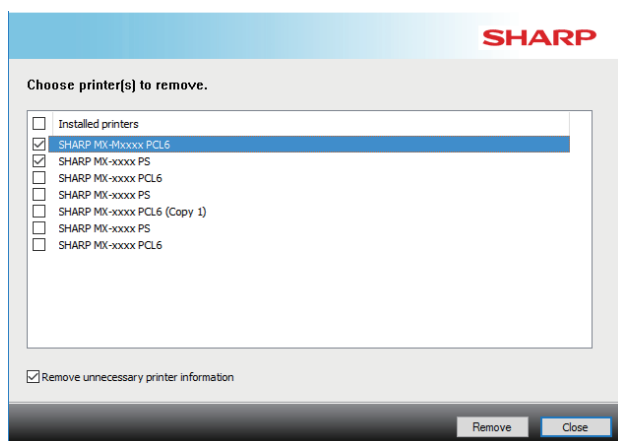
## ! Removing the software

### CHECK

To remove the software installed using the installer, follow the steps below.

### Solution

- 1) Click the [Start] button, select [Settings] → [System] → [Apps and Features].  
(In Windows 8.1/Windows Server 2012, right-click the [Start] button, select [Control Panel] → [Uninstall a program].)  
(In Windows 7/Windows Server 2008, click the [Start] button, select [Control Panel] → [Programs and Features].)
- 2) Select [SHARP Driver Uninstall Tool] and click [Uninstall].
- 3) Select the printer driver or the PC-Fax driver that you want to delete from the list, and click the [Remove] button.



- 4) Click the [Close] button.
- 5) Select the other software that you want to delete from the list, and delete.
- 6) Restart your computer.

## Trouble with Mac OS

### ! The machine is not detected

#### CHECK

Is the machine power on?

#### Solution

If the machine is powered off, it will not be detected. Switch on the main power switch and search again after powering on the machine.

#### CHECK

Is your computer connected correctly to the machine?

#### Solution

Make sure that the cable is connected securely to the LAN connectors on your computer and the machine. Check the connections at the hub as well.

### ! Removing the software

#### Solution

Delete the printer that uses the machine's PPD file from the printer list. To show the printer list, see step 9 of "[Mac OS / Installing the printer driver \(page 18\)](#)".



---

**Note**

---

**SHARP®**

SHARP CORPORATION