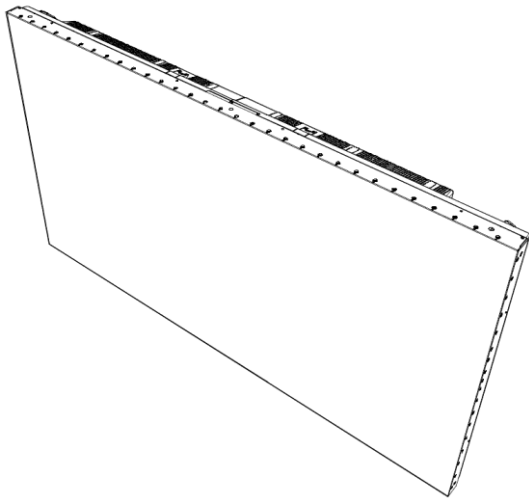


# SHARP

PN-V701 Dismantle Instruction



## LCD MONITOR

MODEL PN-V701

## Dismantle Instruction

---

## Table of contents

---

1. Scope.....	3
2. Tools for dismantling.....	3
3. Dismantle Procedure .....	3
4. Back covers .....	4
5. Printed circuit boards .....	5
6. Battery.....	6
7. LCD Module .....	7
8. Capacitors.....	8
9. Parts List .....	9

## **1. Scope**

This document describes dismantling instruction according to Annex VII of Directive 2012/19/EU.

## **2. Tools for dismantling**

Below tools are required to dismantle this product.

- Screw Driver
- Nipper

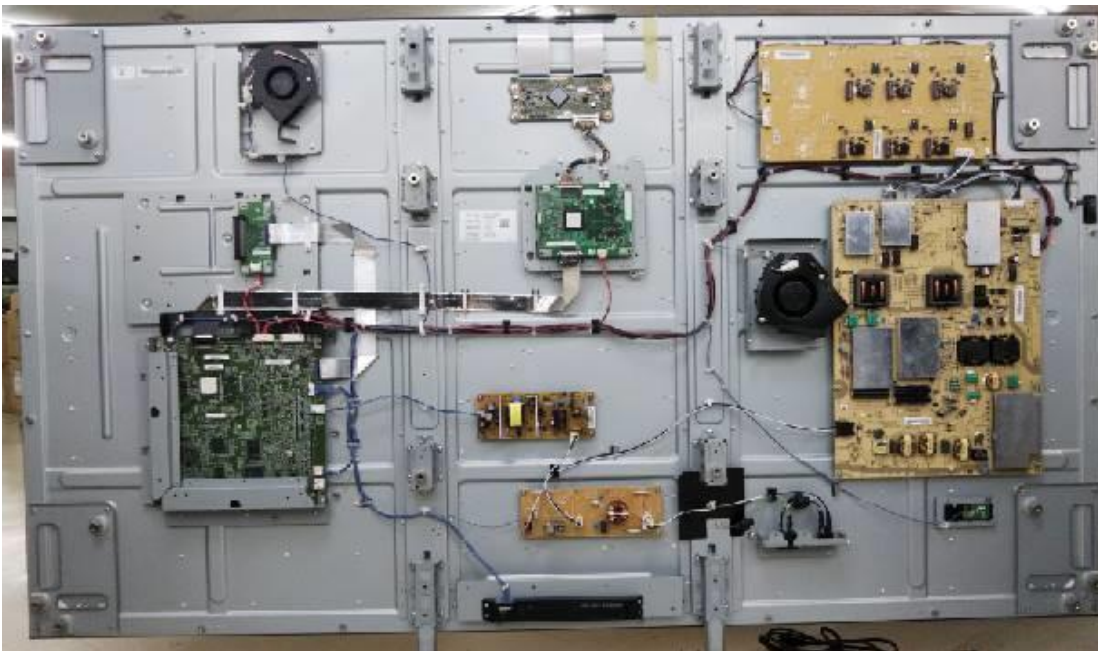
## **3. Dismantle Procedure**

This product can be dismantled by below steps.

1. Remove Back covers (section 4)
2. Remove Printed circuit boards (section 5)
3. Remove Battery (section 6)
4. Dismantle LCD (section 7)
5. Remove Electrolyte Capacitors (section 8)

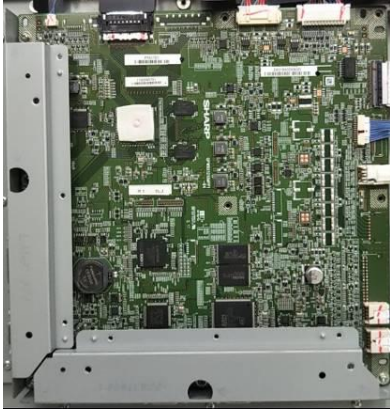
## 4. Back covers

2 back covers (right/left) can be removed by screw driver.



## 5. Printed circuit boards

All PWBs can be removed by screw driver.



Main I/F PWB (1pcs)



Color Mura Correction PWB (1pcs)



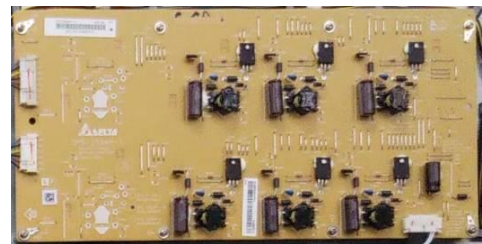
Conversion PWB (1pcs)



Power PWB (1pcs)



Temperature sensor PWB (1pcs)



LED driver PWB (1pcs)



AC Relay PWB (1pcs)



5V Power PWB (1pcs)



T-CON PWB (1pcs)



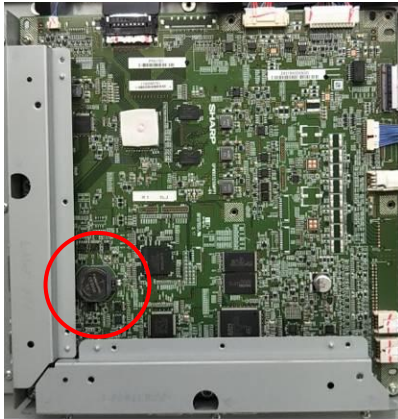
Key PWB (1pcs)



## 6. Battery

This model uses only CR2032 Lithium Coin battery on Main I/F PWB.

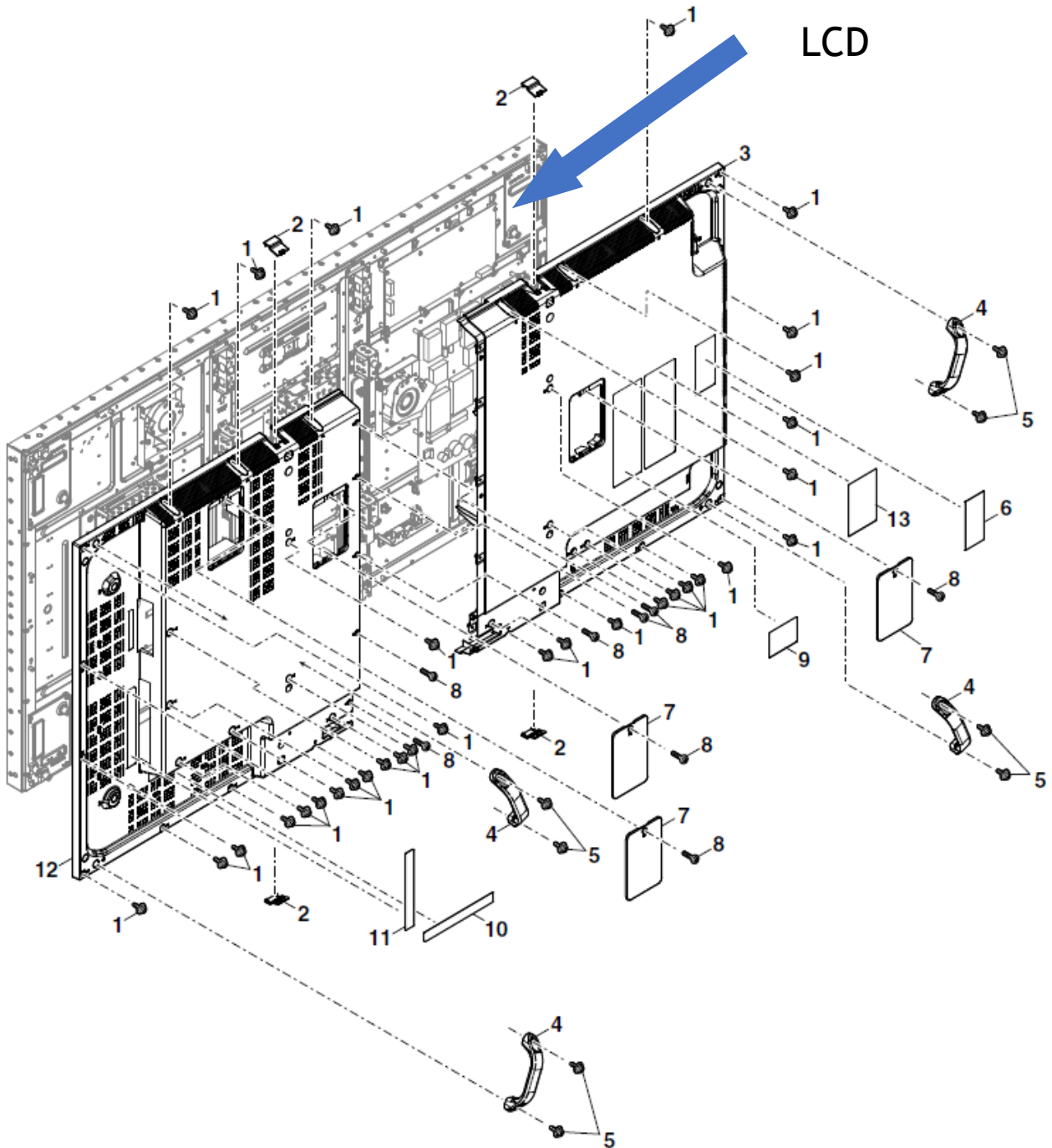
Battery CR2032 can easily be removed from the battery holder.



## 7. LCD Module

- LCD Dismantle procedure

After you have removed the PWB's, please take out the cables from the LCD module.



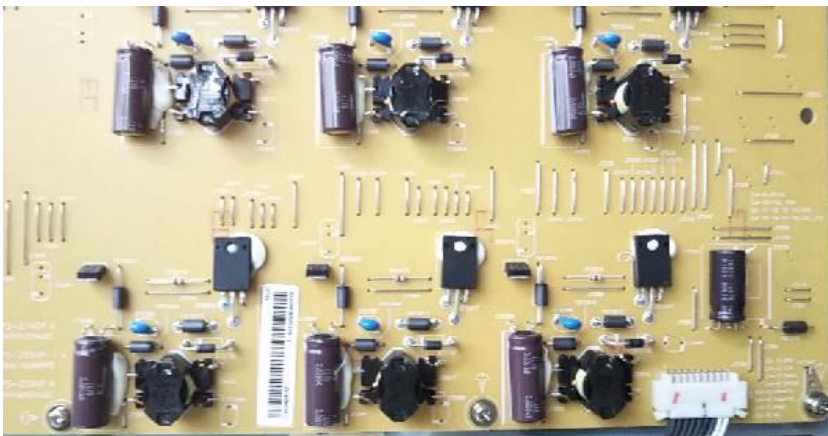
## 8. Capacitors

Electrolyte Capacitors which diameter/height is larger than 25mm is installed on Power PWB, LED driver PWB and 5V Power PWB.

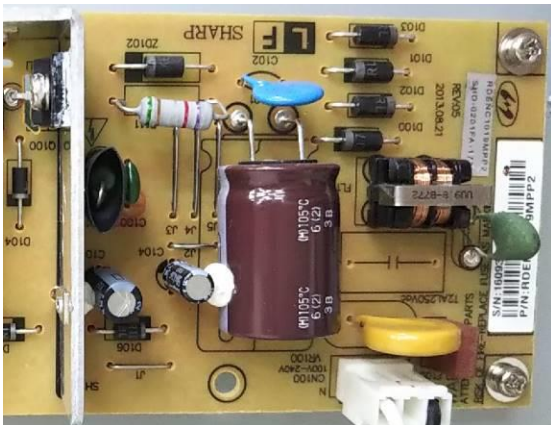
These capacitors can be removed by using nipper to cut the leads.



On Power PWB



On LED driver PWB



On 5V Power PWB



## 9. Parts List

Parts described in Annex VII of directive 2012/19/EU are as below.

Parts	Note
LCD	70inch LCD module
Printed Circuit Boards	Main I/F PWB Color Mura Correction PWB Power PWB LED driver PWB AC Relay PWB 5V Power PWB Conversion PWB Key PWB Temperature sensor PWB T-CON PWB
Battery	Lithium Coin Battery CR2032
Electrolyte capacitors (height >25mm, diameter >25mm)	On Power PWB On 5V Power PWB On LED driver PWB
External electric cables	2 kinds of Power Cord - CEE 7 (for EU) - Type-BF (for UK)