

# SHARP®

MODEL  
**AR-M236**  
**AR-M237**  
**AR-M276**  
**AR-M277**

## DIGITAL MULTIFUNCTIONAL SYSTEM

### SOFTWARE SETUP GUIDE

	Page
• INTRODUCTION .....	Back cover
• SOFTWARE FOR THE SHARP AR-M230/M270 SERIES .....	2
• BEFORE INSTALLATION .....	2
• INSTALLING THE SOFTWARE .....	3
• CONNECTING TO A COMPUTER ....	12
• CONFIGURING THE PRINTER DRIVER .....	13
• HOW TO USE THE ONLINE MANUAL .....	14
• TROUBLESHOOTING .....	15

# INTRODUCTION

This manual explains how to install and configure the software that is required for the printer function of the machine. The procedure for viewing the online manual is also explained.



- The screen images in this manual are mainly for Windows® XP. With other versions of Windows®, some screen images may be different from those in this manual.
- The explanations in this manual are based on the North American version of the software. Versions for other countries and regions may vary slightly from the North American version.
- Where "AR-XXXX" appears in this manual, please substitute the name of your model for "XXXX". For the name of your model, see "PART NAMES AND FUNCTIONS" in the operation manual for copier.
- This manual refers to the "SHARP Digital Multifunctional System AR-M230/M270 Series Software CD-ROM" simply as "CD-ROM".

## Trademark acknowledgments

- Microsoft® Windows® operating system is a trademark or copyright of Microsoft Corporation in the U.S.A. and other countries.
- Windows® 95, Windows® 98, Windows® Me, Windows NT® 4.0, Windows® 2000, and Windows® XP are trademarks or copyrights of Microsoft Corporation in the U.S.A. and other countries.
- Acrobat® Reader Copyright© 1987- 2002 Adobe Systems Incorporated. All rights reserved. Adobe, the Adobe logo, Acrobat, and the Acrobat logo are trademarks of Adobe Systems Incorporated.
- IBM and PC/AT are trademarks of International Business Machines Corporation.
- All other trademarks and copyrights are the property of their respective owners.

## SOFTWARE LICENSE

The SOFTWARE LICENSE will appear when you install the software from the CD-ROM. By using all or any portion of the software on the CD-ROM or in the machine, you are agreeing to be bound by the terms of the SOFTWARE LICENSE.

The display screens, messages, and key names shown in the manual may differ from those on the actual machine due to product improvements and modifications.

# CONTENTS

<b>SOFTWARE FOR THE SHARP AR-M230/M270 SERIES.....</b>	<b>2</b>
<b>BEFORE INSTALLATION .....</b>	<b>2</b>
● HARDWARE AND SOFTWARE REQUIREMENTS .....	2
● INSTALLATION ENVIRONMENT AND INSTALLATION PROCEDURE.....	2
<b>INSTALLING THE SOFTWARE .....</b>	<b>3</b>
● STANDARD INSTALLATION (USB only) .....	3
● CUSTOM INSTALLATION.....	5
● INSTALLING THE PC-FAX DRIVER .....	11
<b>CONNECTING TO A COMPUTER .....</b>	<b>12</b>
● CONNECTING A USB CABLE .....	12
● CONNECTING A PARALLEL CABLE .....	12
<b>CONFIGURING THE PRINTER DRIVER .....</b>	<b>13</b>
<b>HOW TO USE THE ONLINE MANUAL.....</b>	<b>14</b>
<b>TROUBLESHOOTING.....</b>	<b>15</b>

# SOFTWARE FOR THE SHARP AR-M230/M270 SERIES

The CD-ROM that accompanies the machine contains the following software:

- **Printer driver**

The printer driver enables you to use the printer function of the machine.

- **PC-FAX driver**

The PC-FAX driver lets you easily send faxes from your computer through the machine to another fax machine (when the facsimile expansion kit is installed).

\* To use the PC-FAX driver, Internet Explorer 4.0 or later must be installed in your computer.

- **Acrobat Reader 5.0**

Software that allows you to view the online printer manual on your computer.

## BEFORE INSTALLATION

### HARDWARE AND SOFTWARE REQUIREMENTS

Check the following hardware and software requirements before installing the software.

Computer type	IBM PC/AT or compatible computer equipped with a USB 2.0/1.1* <sup>1</sup> or bi-directional parallel interface (IEEE 1284)
Operating system	Windows 95* <sup>2</sup> , Windows 98, Windows Me, Windows NT Workstation 4.0 (Service Pack 5 or later)* <sup>3</sup> , Windows 2000 Professional* <sup>3</sup> , Windows XP Professional* <sup>3</sup> , Windows XP Home Edition* <sup>3</sup>
Other hardware requirements	An environment that allows any of the above operating systems to fully operate

\*<sup>1</sup> Compatible with Windows 98, Windows Me, Windows 2000 Professional, Windows XP Professional or Windows XP Home Edition preinstalled models equipped with a USB interface as standard.

\*<sup>2</sup> If you are installing the PC-FAX driver, a system file must be updated before the driver can be installed. For more information, click the "Display Readme" button in the Software Selection window of the installer. (p. 11)

\*<sup>3</sup> Administrator's rights are required to install the software using the installer.

## INSTALLATION ENVIRONMENT AND INSTALLATION PROCEDURE

Follow the appropriate installation procedure for your operating system and type of cable as indicated below.

Operating system	Cable	Procedure to follow
Windows 98/Me/2000/XP	USB*	STANDARD INSTALLATION (USB only) (p. 3)
Windows XP	USB*/Parallel	Installation in Windows XP (USB/Parallel cable) (p. 5)
Windows 98/Me/2000	USB*	Installation in Windows 98/Me/2000 (USB cable) (p. 7)
Windows 95/98/Me/NT 4.0/2000	Parallel	Installation in Windows 95/98/Me/NT 4.0/2000 (Parallel cable) (p. 9)

\* If the machine is connected by a USB cable, it is recommended that you use the standard installation.

# INSTALLING THE SOFTWARE



If an error message appears, follow the on-screen instructions to solve the problem. After the problem is solved, the installation procedure will continue. Depending on the problem, you may have to click the "Cancel" button to exit the installer. In this case, reinstall the software from the beginning after solving the problem.

## STANDARD INSTALLATION (USB only)

The procedure for a standard installation of the software is explained below. If the machine is connected by a USB cable, it is recommended that you use the standard installation.



The standard installation can only be used when the machine is connected by a USB cable. If the machine is connected by a parallel cable, use the custom installation procedure (p. 5).

- 1 The USB cable must not be connected to the machine. Make sure that the cable is not connected before proceeding.**

If the cable is connected, a Plug and Play window will appear. If this happens, click the "Cancel" button to close the window and disconnect the cable.



The cable will be connected in step 9.

- 2 Insert the CD-ROM into your computer's CD-ROM drive.**

- 3 Click the "start" button, click "My Computer" ( ), and then double-click the CD-ROM icon ( ).**

In Windows 98/Me/2000, double-click "My Computer" and then double-click the CD-ROM icon.

- 4 Double-click the "Setup" icon ( ).**



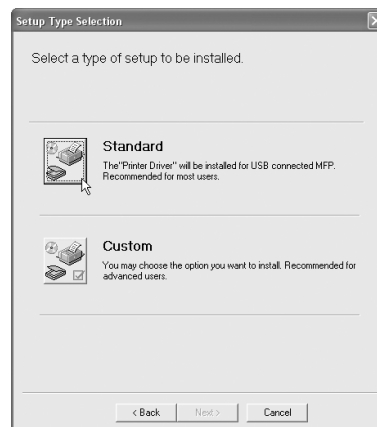
If the language selection screen appears after you double click the "Setup" icon, select the language that you wish to use and click the "Next" button. (Normally the correct language is selected automatically.)

- 5 The "SOFTWARE LICENSE" window will appear. Make sure that you understand the contents of the license agreement, and then click the "Yes" button.**

- 6 Read the message in the "Welcome" window and then click the "Next" button.**

- 7 Click the "Standard" button.**

Follow the on-screen instructions.



If you are running Windows 2000/XP and a warning message appears regarding the Windows logo test or digital signature, be sure to click "Continue Anyway" or "Yes".

- 8 When the finish screen appears, click the "Close" button.**

A message will appear instructing you to connect the machine to your computer. Click the "OK" button.



After the installation, a message prompting you to restart your computer may appear. In this case, click the "Yes" button to restart your computer.

## INSTALLING THE SOFTWARE

### 9 Make sure that the power of the machine is turned on, and then connect the USB cable. (p. 12)

Windows will detect the machine and the Plug and Play screen will appear.

### 10 Begin installation of the printer driver.

"SHARP AR-XXXX" will appear in the "Found New Hardware Wizard" dialog box. Select "Install the software automatically (Recommended)" and click the "Next" button. Follow the on-screen instructions.



**Caution**

If you are running Windows 2000/XP and a warning message appears regarding the Windows logo test or digital signature, be sure to click "Continue Anyway" or "Yes".

### This completes the installation of the software.

After installation, see "CONFIGURING THE PRINTER DRIVER" (p. 13) to check the printer driver settings.

## INSTALLING THE SOFTWARE

# CUSTOM INSTALLATION

The procedure for a custom installation of the software is explained below. Use the custom installation procedure when the machine is connected by a parallel cable, when the machine is used as a shared printer on a network, or when installing the PC-FAX driver.

## Installation in Windows XP (USB/Parallel cable)

- 1 The USB or parallel cable must not be connected to the machine. Make sure that the cable is not connected before proceeding.**

If the cable is connected, a Plug and Play window will appear. If this happens, click the "Cancel" button to close the window and disconnect the cable.



The cable will be connected in step 15.

- 2 Insert the CD-ROM into your computer's CD-ROM drive.**

- 3 Click the "start" button, click "My Computer" ( ), and then double-click the CD-ROM icon ( ).**

- 4 Double-click the "Setup" icon ( ).**

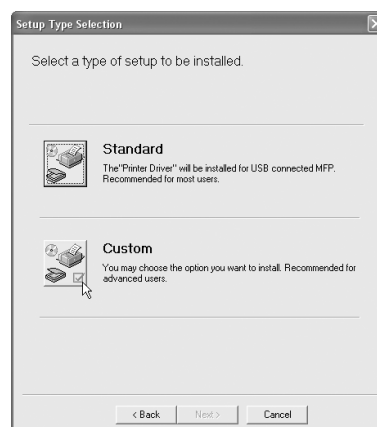


If the language selection screen appears after you double click the "Setup" icon, select the language that you wish to use and click the "Next" button. (Normally the correct language is selected automatically.)

- 5 The "SOFTWARE LICENSE" window will appear. Make sure that you understand the contents of the license agreement, and then click the "Yes" button.**

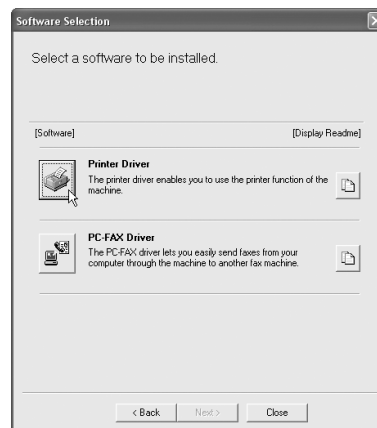
- 6 Read the message in the "Welcome" window and then click the "Next" button.**

- 7 Click the "Custom" button.**



- 8 Click the "Printer Driver" button.**

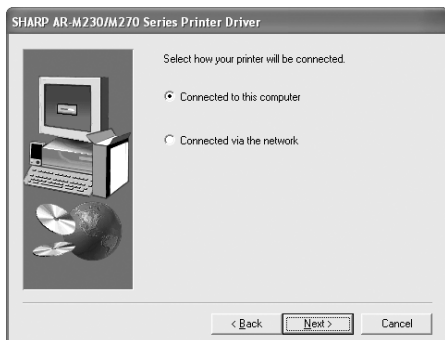
To view information on the software, click the "Display Readme" button.



- 9 Click the "Next" button.**

## INSTALLING THE SOFTWARE

- 10** When you are asked how the printer is connected, select "Connected to this computer" and click the "Next" button.



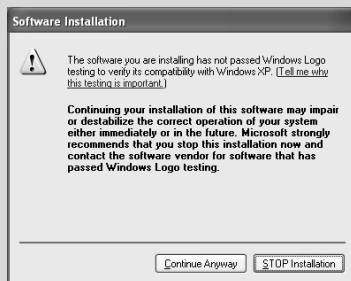
- 11** A confirmation window appears. Check the contents and then click the "Next" button.

- 12** Click the "Next" button.

Begin installation of the printer driver.



If the following screen appears while the files are being copied (the message may appear more than once), click the "Continue Anyway" button.



- 13** When "The installation of the SHARP software is complete" appears, click the "OK" button.

- 14** Click the "Close" button.

A message will appear instructing you to connect the machine to your computer. Click the "OK" button.



After the installation, a message prompting you to restart your computer may appear. In this case, click the "Yes" button to restart your computer.

- 15** Connect the interface cable to the machine and your computer (p. 12).

- If you are using a USB cable, make sure the machine's power is turned on and then connect the cable.
- If you are using a parallel cable, turn off the power of the machine and your computer, connect the cable, turn on the power of the machine, and then turn on your computer.

Windows will detect the machine and the Plug and Play screen will appear.

- 16** Begin installation of the printer driver.

"SHARP AR-XXXX" will appear in the "Found New Hardware Wizard" dialog box. Select "Install the software automatically (Recommended)" and click the "Next" button. Follow the on-screen instructions.



If a warning window appears regarding the "Windows logo test", be sure to click the "Continue Anyway" button.

**This completes the installation of the software.**

After installation, see "CONFIGURING THE PRINTER DRIVER" (p. 13) to check the printer driver settings.



## INSTALLING THE SOFTWARE

### Installation in Windows 98/Me/2000 (USB cable)

- 1** The USB cable must not be connected to the machine. Make sure that the cable is not connected before proceeding.

If the cable is connected, a Plug and Play window will appear. If this happens, click the "Cancel" button to close the window and disconnect the cable.



The cable will be connected in step 16.

- 2** Insert the CD-ROM into your computer's CD-ROM drive.

- 3** Double-click "My Computer" (🖥️), and then double-click the CD-ROM icon (💿).

- 4** Double-click the "Setup" icon (🔧).

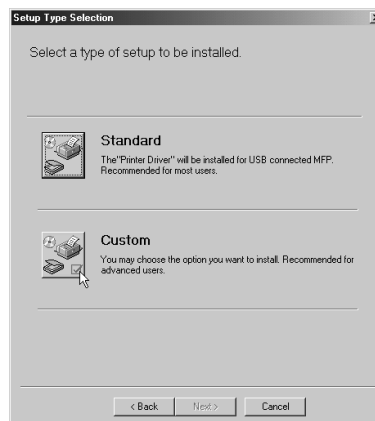


If the language selection screen appears after you double click the "Setup" icon, select the language that you wish to use and click the "Next" button. (Normally the correct language is selected automatically.)

- 5** The "SOFTWARE LICENSE" window will appear. Make sure that you understand the contents of the license agreement, and then click the "Yes" button.

- 6** Read the message in the "Welcome" window and then click the "Next" button.

- 7** Click the "Custom" button.

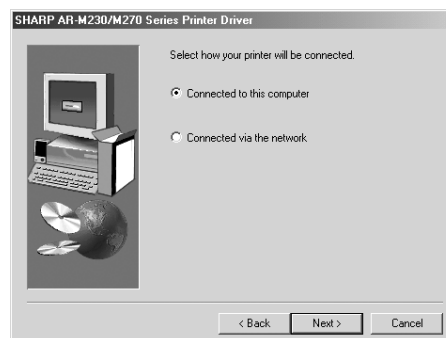


- 8** Click the "Printer Driver" button. To view information on the software, click the "Display Readme" button.



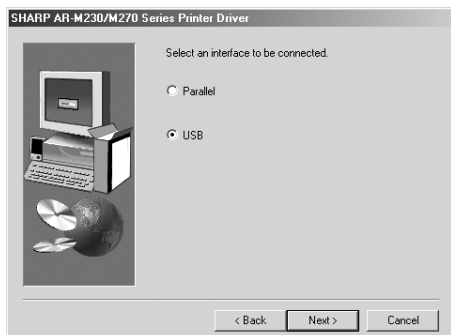
- 9** Click the "Next" button.

- 10** When you are asked how the printer is connected, select "Connected to this computer" and click the "Next" button.



## INSTALLING THE SOFTWARE

- 11** When the interface selection screen appears, select "USB" and click the "Next" button.



- 12** A confirmation window appears. Check the contents and then click the "Next" button.

- 13** Click the "Next" button.

In Windows 98/Me, click the "Yes" button. Begin installation of the printer driver.



In Windows 2000, if the following screen appears while the files are being copied (the message may appear more than once), click the "Yes" button.



- 14** When "The installation of the SHARP software is complete" appears, click the "OK" button.

- 15** Click the "Close" button.

A message will appear instructing you to connect the machine to your computer. Click the "OK" button.



After the installation, a message prompting you to restart your computer may appear. In this case, click the "Yes" button to restart your computer.

- 16** Make sure that the power of the machine is turned on, and then connect the USB cable. (p. 12)

Windows will detect the machine and the Plug and Play screen will appear.

- 17** Follow the instructions in the Plug and Play screen that appears in your version of Windows to begin the installation.

**This completes the installation of the software.**

After installation, see "CONFIGURING THE PRINTER DRIVER" (p. 13) to check the printer driver settings.

## INSTALLING THE SOFTWARE

### Installation in Windows 95/98/Me/NT 4.0/2000 (Parallel cable)

- 1** The parallel cable must not be connected to the machine. Make sure that the cable is not connected before proceeding.

If the cable is connected, a Plug and Play window will appear. If this happens, click the "Cancel" button to close the window and disconnect the cable.



The cable will be connected in step 17.

- 2** Insert the CD-ROM into your computer's CD-ROM drive.

- 3** Double-click "My Computer" (🖥️), and then double-click the CD-ROM icon (💿).

- 4** Double-click the "Setup" icon (🔧).

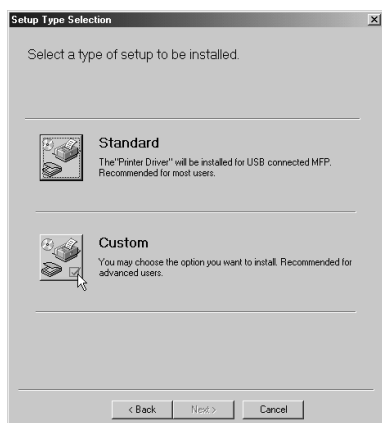


If the language selection screen appears after you double click the "Setup" icon, select the language that you wish to use and click the "Next" button. (Normally the correct language is selected automatically.)

- 5** The "SOFTWARE LICENSE" window will appear. Make sure that you understand the contents of the license agreement, and then click the "Yes" button.

- 6** Read the message in the "Welcome" window and then click the "Next" button.

- 7** Click the "Custom" button.



- 8** Click the "Printer Driver" button.

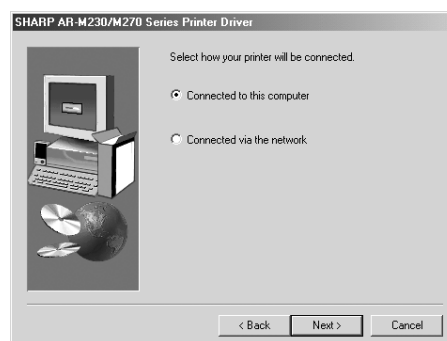
To view information on the software, click the "Display Readme" button.



- 9** Click the "Next" button.

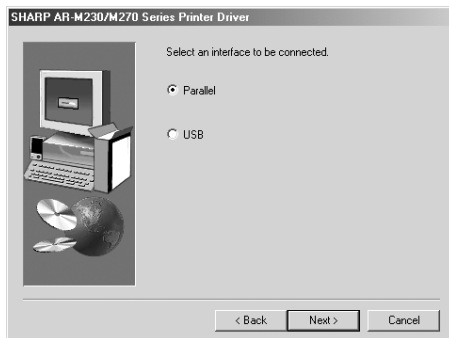
If you are using Windows 95/NT 4.0, go to step 12.

- 10** When you are asked how the printer is connected, select "Connected to this computer" and click the "Next" button.

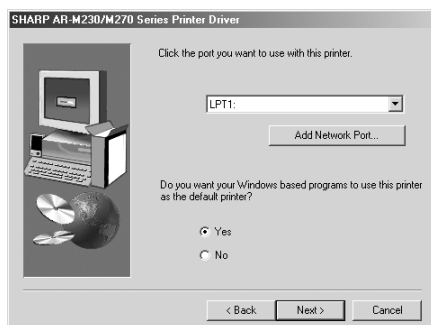


## INSTALLING THE SOFTWARE

- 11** When the interface selection screen appears, select "Parallel" and click the "Next" button.



- 12** Select the printer port and click the "Next" button.  
Select "LPT1" for the printer port.



If "LPT1" does not appear, another printer or peripheral device is using LPT1. In this case continue the installation, and after the installation is finished, change the port setting so that the machine can use LPT1. This procedure is explained in "Another printer is using the parallel port (when using a parallel cable)" on page 15.

- 13** When the model selection window appears, select model name of your machine and click the "Next" button.  
For the model name of your machine, see "PART NAMES AND FUNCTIONS" in the operation manual for copier.

- 14** Click the "Next" button.

In Windows 95/98/Me/NT 4.0, click the "Yes" button.  
Begin installation of the printer driver.

- 15** When "The installation of the SHARP software is complete" appears, click the "OK" button.

- 16** Click the "Close" button.

A message will appear instructing you to connect the machine to your computer. Click the "OK" button.



After the installation, a message prompting you to restart your computer may appear. In this case, click the "Yes" button to restart your computer.

- 17** Turn off the power of the machine and your computer, and connect the machine to your computer with the parallel cable. (p. 12)  
After connecting the machine to your computer, turn on the power of the machine and then start up your computer.

**This completes the installation of the software.**

After installation, see "CONFIGURING THE PRINTER DRIVER" (p. 13) to check the printer driver settings.

## INSTALLING THE SOFTWARE

# INSTALLING THE PC-FAX DRIVER



- When installing the PC-FAX driver, a system file must be updated before the driver can be installed. For more information, click the "Display Readme" button on the software selection window.
- If the PC-FAX function will be used over a USB connection, install the printer driver before installing the PC-FAX driver.
- The PC-FAX driver can only be used if the facsimile expansion kit is installed.

**1 The USB or parallel cable must not be connected to the machine. Make sure that the cable is not connected before proceeding.**

If the cable is connected, a Plug and Play window will appear. If this happens, click the "Cancel" button to close the window and disconnect the cable.

**2 Insert the CD-ROM into your computer's CD-ROM drive.**

**3 Click the "start" button, click "My Computer" ( ), and then double-click the CD-ROM icon ( ).**

In Windows 95/98/Me/NT 4.0/2000, double-click "My Computer" and then double-click the CD-ROM icon.

**4 Double-click the "Setup" icon ( ).**



If the language selection screen appears after you double click the "Setup" icon, select the language that you wish to use and click the "Next" button. (Normally the correct language is selected automatically.)

**5 The "SOFTWARE LICENSE" window will appear. Make sure that you understand the contents of the license agreement, and then click the "Yes" button.**

**6 Read the message in the "Welcome" window and then click the "Next" button.**

**7 Click the "Custom" button.**

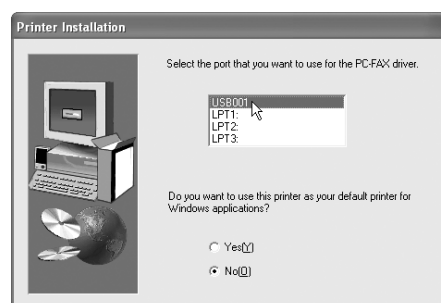
**8 Click the "PC-FAX Driver" button.**  
To view information on the software, click the "Display Readme" button.



**9 Click the "Next" button.**

**10 Follow the on-screen instructions.**

- When the model selection window appears, select model name of your machine.
- When the port selection window appears, select the port that the printer driver uses.



- The port used by the printer driver is indicated by a checkmark in the "Ports" tab of the printer driver properties window. (In Windows 95/98/Me, the port is selected in "Print to the following port" in the "Details" tab.)
- The USB port name will vary depending on the number of USB ports created on your computer. If the port created during installation of the printer driver is your first USB port, the name will be "USB001".

# CONNECTING TO A COMPUTER

Follow the procedure below to connect the machine to your computer.

Interface cables for connecting the machine to your computer are not included with the machine. Please purchase the appropriate cable for your computer.

## Interface cable

### USB cable

Shielded twisted pair cable, high-speed transmission equivalent (9 feet (3 m) max.)

If the machine will be connected using a USB 2.0 interface, please purchase a USB cable that supports USB 2.0.

### Parallel cable

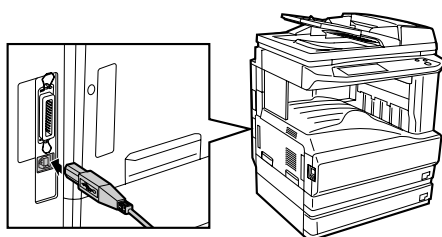
IEEE 1284-Shielded type bi-directional parallel interface cable (9 feet (3 m) max.)



- USB is available on a PC/AT compatible computer that was originally equipped with USB and had Windows 98, Windows Me, Windows 2000 Professional, Windows XP Professional or Windows XP Home Edition preinstalled.
- Do not connect the interface cable before installing the printer driver. The interface cable must be connected during installation of the printer driver.

## CONNECTING A USB CABLE

- 1 Insert the cable into the USB connector on the machine.



- 2 Insert the other end of the cable into your computer's USB connector.

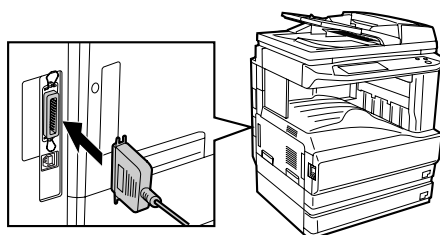


The cable can also be inserted into a USB 1.1 connector.

## CONNECTING A PARALLEL CABLE

- 1 Ensure that your computer and the machine are turned off.

- 2 Insert the cable into the parallel connector on the machine and fasten with the clasps.



# CONFIGURING THE PRINTER DRIVER

After installing the printer driver, you must configure the printer driver settings appropriately for the number of paper trays on the machine and the size of paper loaded in each tray.

- 1** Click the "start" button, click "Control Panel", click "Printers and Other Hardware", and then click "Printers and Faxes".

In operating systems other than Windows XP, click the "Start" button, select "Settings", and then click "Printers".

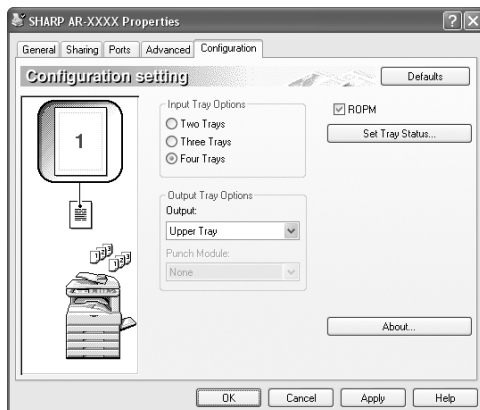
- 2** Click the "SHARP AR-XXXX" printer driver icon and select "Properties" from the "File" menu.

If you are using Windows NT 4.0/2000/XP, go to step 4.

- 3** In Windows 95/98/Me, click the "Setup" tab.

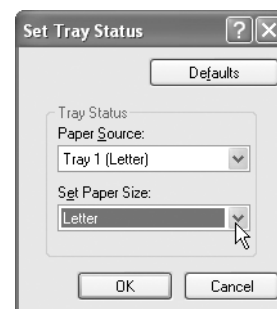
- 4** Click the "Configuration" tab and set the printer configuration based on the options that have been installed.

Set the printer configuration properly. Otherwise, printing may not take place correctly.



- 5** Click the "Set Tray Status" button and select the size of paper that is loaded in each tray.

Select a tray in the "Paper source" menu, and select the size of paper loaded in that tray from the "Set Paper Size" menu. Repeat for each tray.



- 6** Click the "OK" button in the "Set Tray Status" window.

- 7** Click the "OK" button in the printer properties window.

# HOW TO USE THE ONLINE MANUAL

The online manual provides detailed instructions for operating the machine as a printer. View the online manual when you use the printer function after the initial setup is completed.

## Contents of the online manual

The contents of the online manual are as follows.

**How to use the online manual:** Explains how to use the online manual.

**Print:** Provides information on how to print a document.

**Printer sharing:** Explains how to configure the machine for use as a shared printer.

**Troubleshooting:** Provides instructions on how to solve driver or software problems.



To view the online manual, your computer must have Acrobat Reader 5.0 or later. If you do not have Acrobat Reader, follow the instructions in "Installing Acrobat Reader" to install it.

**1** Insert the CD-ROM into your computer's CD-ROM drive.

**2** Click the "start" button, click "My Computer" ( ), and then double-click the CD-ROM icon ( ).

In Windows 95/98/Me/NT 4.0/2000, double-click "My Computer" and then double-click the CD-ROM icon.

**3** Double-click the "Manual" folder, double-click the "EnglishA" folder (for regions other than the U.S., double-click the "English" folder), and then double-click the "AR\_M230\_M270.pdf" icon.

The online manual will appear.



- If you will be viewing the online manual repeatedly, you may find it convenient to copy this online manual file to your computer.
- The online manual can be printed out using Acrobat Reader. SHARP recommends printing out the sections which you refer to regularly.
- Refer to "Help" of Acrobat Reader for more details on how to use Acrobat Reader.

## Installing Acrobat Reader

**1** Insert the CD-ROM into your computer's CD-ROM drive.

**2** Click the "start" button, click "My Computer" ( ), and then double-click the CD-ROM icon ( ).

In Windows 95/98/Me/NT4.0/2000, double-click "My Computer" and then double-click the CD-ROM icon.

**3** Double-click the "Acrobat" folder, and then double-click the "ar500enu.exe" icon.

Follow the on-screen instructions to install Acrobat Reader.



# TROUBLESHOOTING

If the software does not install correctly, check the following items on your computer.

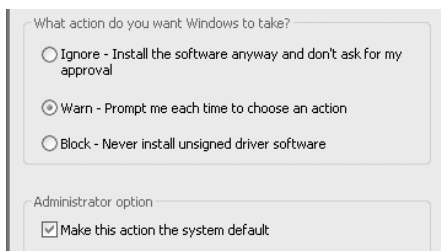
To remove the software, see "Uninstalling the printer driver" in the online manual.

Troubleshooting information can also be found in the README files for each of the software programs. To view a README file, click the "Display Readme" button in the "Software Selection" screen.

## Printer driver cannot be installed (Windows 2000/XP)

If the printer driver cannot be installed in Windows 2000/XP, follow these steps to check your computer's settings.

- 1 Click the "start" button and then click "Control Panel".**  
In Windows 2000, click the "Start" button, select "Settings", and then click "Control Panel".
- 2 Click "Performance and Maintenance", and then click "System".**  
In Windows 2000, double-click the "System" icon.
- 3 Click the "Hardware" tab and then click the "Driver Signing" button.**
- 4 Check "What action do you want Windows to take?" ("File signature verification" in Windows 2000).**



If the option "Block" has been selected, it will not be possible to install the printer driver. Select the option "Warn" and then install the printer driver as explained in "Installation in Windows XP (USB/Parallel cable)".

## Another printer is using the parallel port (when using a parallel cable)

If another printer is using the parallel port and printing is not possible using the machine, follow the steps below to change the port setting of the other printer driver, and make sure that the port of the printer driver for the machine is set to LPT1.

- 1 Click the "start" button, click "Control Panel", click "Printers and Other Hardware", and then click "Printers and Faxes".**  
In Windows 95/98/Me/NT 4.0/2000, click the "Start" button, select "Settings", and then click "Printers".
- 2 Click the icon of the printer driver for which you wish to change the port setting, and select "Properties" from the "File" menu.**
- 3 Click the "Ports" tab.**  
In Windows 95/98/Me, click the "Details" tab.
- 4 Select "FILE:" in the "Print to the following port" list box, and click the "OK" button.**
- 5 Click the "SHARP AR-XXXX" printer driver icon and select "Properties" from the "File" menu.**
- 6 Click the "Ports" tab.**  
In Windows 95/98/Me, click the "Details" tab.
- 7 Select "LPT1" in the "Print to the following port" list box, and click the "OK" button.**



**Note**

In the event that you need to use the other printer, repeat the above steps to set the port of the machine to "FILE:", and change the port setting of the other printer back to "LPT1".

## TROUBLESHOOTING

### The printer driver cannot be correctly installed by Plug and Play (Windows 2000/XP)

In Windows 2000/XP, if the printer driver cannot be correctly installed by Plug and Play (for example, Plug and Play takes place without copying the required files for the printer driver installation), follow these steps to remove unneeded devices and then install the printer driver as explained in "Installation in Windows XP (USB/Parallel cable)" (p. 5).

#### 1 Click the "start" button, click "Control Panel", and then click "Performance and Maintenance".

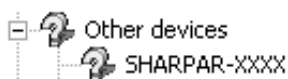
In Windows 2000, click the "Start" button, select "Settings", and then click "Control Panel".

#### 2 Click "System", click the "Hardware" tab, and click the "Device Manager" button.



In Windows 2000, double-click the "System" icon, click the "Hardware" tab, and click the "Device Manager" button.

#### 3 Click the icon beside "Other devices".



If "SHARP AR-XXXX" appears, select and delete it.



If "Other devices" does not appear, close the "Device Manager" window.

#### 4 Install the software as explained in "Installation in Windows XP (USB/Parallel cable)".

### Plug and play screen does not appear (when using a USB cable)

If the Plug and Play screen does not appear after you connect the machine to your computer with a USB cable and turn on the machine, follow the steps below to verify that the USB port is available.

#### 1 Click the "start" button, click "Control Panel", and then click "Performance and Maintenance".

In Windows 98/Me/2000, click the "Start" button, select "Settings", and then click "Control Panel".

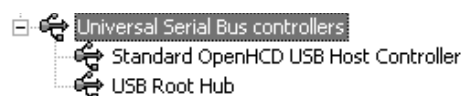
#### 2 Click "System", click the "Hardware" tab, and click the "Device Manager" button.

"Universal Serial Bus controllers" will appear in the list of devices.



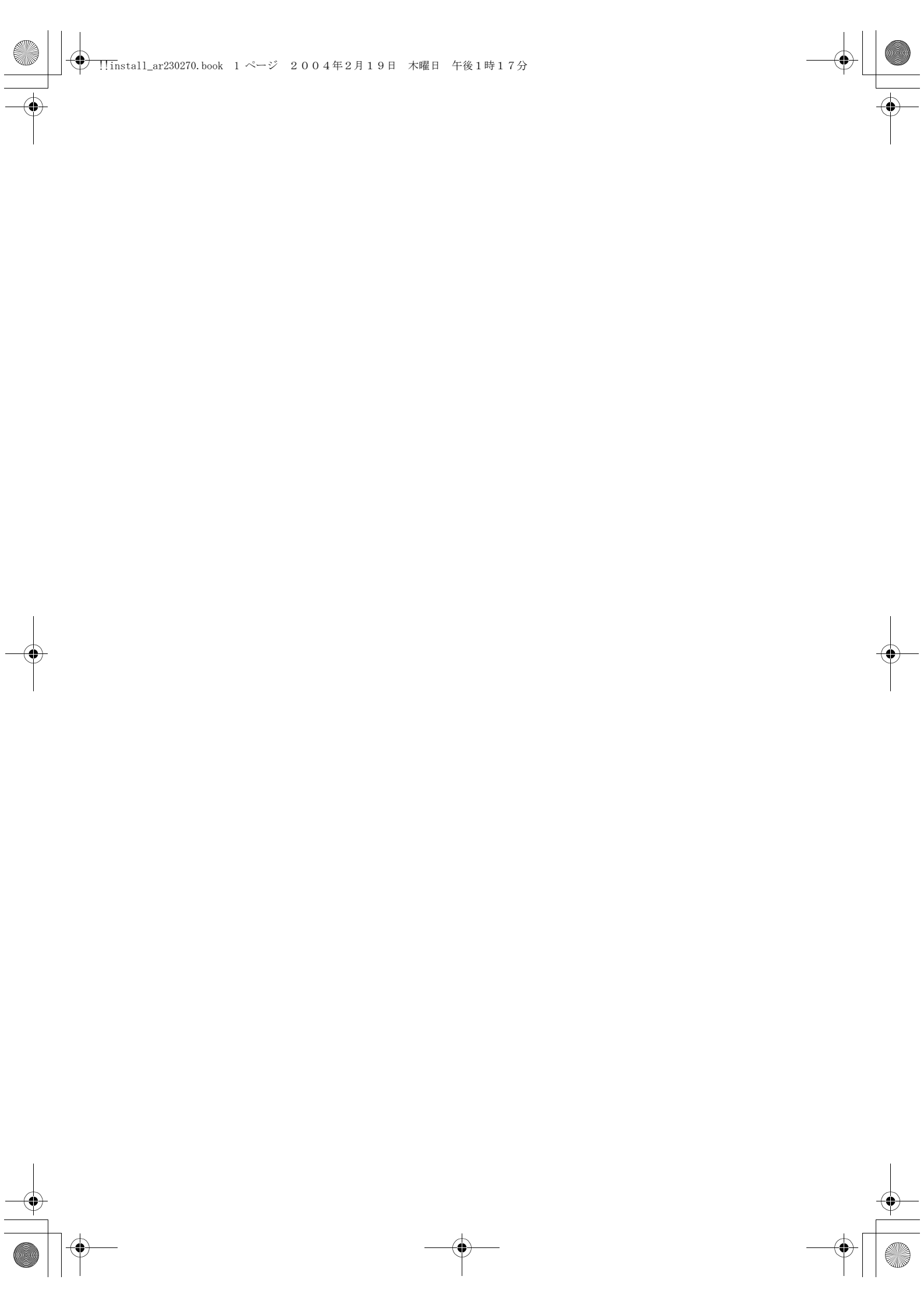
- In Windows 98/Me, double-click the "System" icon and click the "Device Manager" tab.
- In Windows 2000, double-click the "System" icon, click the "Hardware" tab, and click the "Device Manager" button.
- If the "System" icon does not appear in Windows Me, click "view all Control Panel options".

#### 3 Click the icon beside "Universal Serial Bus controllers".



Two items should appear: your controller chipset type and Root Hub. If these items appear, you can use the USB port. If the "Universal Serial Bus controllers" shows a yellow exclamation point or does not appear, you must check your computer manual for USB troubleshooting or contact your computer manufacturer.

#### 4 Once you have verified that the USB port is enabled, install the software as explained in "Installation in Windows XP (USB/Parallel cable)".



**AR-M236/AR-M237/AR-M276/AR-M277**

**SHARP®**  
**SHARP CORPORATION**

Printed on 100% post-consumer recycled paper

PRINTED IN CHINA  
2004C KS2  
TINSE1053QSZZ