

**SHARP®**

MODEL

**MX-NB11**

**NETWORK EXPANSION KIT**

**OPERATION GUIDE**

---

---

# INTRODUCTION

The optional network expansion kit (MX-NB11) enables the machine to be used as a network printer and a network scanner.



- This manual refers to the digital multifunctional system MX-B201/MX-B201D as "the machine".
- This manual only explains features that can be used when the optional network expansion kit is installed. For information on loading paper, replacing toner cartridges, clearing paper misfeeds, handling peripheral devices, and other copier-related information, please refer to your operation guide for the machine.
- The machine's default settings and default settings for the printer function can be changed using the user programs. For more information, see the operation guide for the machine.
- The explanations in this manual assume that the person who will install the product and the users of the product have a working knowledge of Microsoft Windows or Mac OS.
- For information on the operating system, please refer to your operating system manual or the online Help function.
- The explanations of screens and procedures in this manual are for Windows Vista® in Windows® environments and Mac OS X v10.4 in Macintosh environments. The screens may vary in other versions of the operating systems.
- This manual refers to the Reversing Single Pass Feeder as the "RSPF".
- Where "XX-XXXX" appears in this manual, please substitute the name of your model.
- The PS3 expansion kit (MX-PK10) mentioned in this manual is an option.
- The explanations in this manual are based on the North American version of the software. Versions for other countries and regions may vary slightly from the North American version.

To use the machine as a PS printer, the PS3 expansion kit (MX-PK10) must be installed. After installing the expansion kit, the product key (password) must be entered in "Product Key Setting" in the Web page (this is only required once). Please consult your dealer for the product key to be entered.

## Warranty

While every effort has been made to make this operation guide as accurate and helpful as possible, SHARP Corporation makes no warranty of any kind with regard to its content. All information included herein is subject to change without notice. SHARP is not responsible for any loss or damages, direct or indirect, arising from or related to the use of this operation guide.

## Trademark Acknowledgments

- Sharpdesk is a trademark of Sharp Corporation.
- Microsoft®, Windows®, Windows® 2000, Windows® XP, Windows Server® 2003, Windows Server® 2008, Windows Vista®, Windows® 7 and Internet Explorer® are registered trademarks or trademarks of Microsoft Corporation in the U.S.A. and other countries.
- Macintosh is a trademark of Apple Inc., registered in the U.S. and other countries.
- Adobe, the Adobe logo, Acrobat, the Adobe PDF logo, and Reader are registered trademarks or trademarks of Adobe Systems Incorporated in the United States and other countries.
- Netscape Navigator is a trademark of Netscape Communications Corporation.
- PCL is a trademark of the Hewlett-Packard Company.
- PostScript is a registered trademark of Adobe Systems Incorporated.
- All other trademarks and copyrights are the property of their respective owners.

## SOFTWARE LICENSE

The SOFTWARE LICENSE will appear when you install the software from the CD-ROM. By using all or any portion of the software on the CD-ROM or in the machine, you are agreeing to be bound by the terms of the SOFTWARE LICENSE.

The display screens, messages, and key names shown in the manual may differ from those on the actual machine due to product improvements and modifications.

---

---

# CONTENTS

INTRODUCTION .....	2
--------------------	---

## **1** BEFORE INSTALLATION

CD-ROMS AND SOFTWARE .....	6
● CD-ROMS IN THE NETWORK EXPANSION KIT .....	6
● SYSTEM REQUIREMENTS .....	7
● SOFTWARE REQUIREMENTS.....	7
USER PROGRAMS FOR THE NETWORK EXPANSION KIT.....	8

## **2** SETUP IN A WINDOWS ENVIRONMENT

INSTALLING THE SOFTWARE .....	9
● USING THE MACHINE WITH A USB CONNECTION.....	9
● CONNECTING A USB CABLE .....	11
● USING THE MACHINE AS A NETWORK PRINTER .....	12
● SHARING THE PRINTER USING WINDOWS NETWORKING .....	14
● INSTALLING THE PRINTER STATUS MONITOR .....	16
● INSTALLING THE PS DISPLAY FONTS.....	17
USING THE PPD FILE.....	18
CONFIGURING THE PRINTER DRIVER .....	19

## **3** SETUP IN A MACINTOSH ENVIRONMENT

MAC OS X.....	20
---------------	----

## **4** PRINTING FROM WINDOWS

BASIC PRINTING .....	23
● IF THE TRAY RUNS OUT OF PAPER DURING PRINTING.....	24
● CANCEL A PRINT JOB .....	24
● WHEN "PAPER SOURCE" IS SET TO "AUTO SELECT" .....	24
OPENING THE PRINTER DRIVER FROM THE "START" BUTTON .....	25
PRINTER DRIVER SETTINGS .....	26
TWO-SIDED PRINTING.....	27
● PAMPHLET STYLE .....	28
PRINTING MULTIPLE PAGES ON ONE PAGE .....	29
FITTING THE PRINTED IMAGE TO THE PAPER .....	30
ROTATING THE PRINT IMAGE 180 DEGREES .....	31
PRINTING A WATERMARK.....	32
● HOW TO PRINT A WATERMARK.....	32
PRINTING TEXT AND LINES/GRAPHICS IN BLACK.....	33
● PRINTING TEXT IN BLACK .....	33
● PRINTING LINES AND VECTOR GRAPHICS IN BLACK.....	33

## **5** PRINTER UTILITIES (WINDOWS)

PRINTER UTILITY .....	34
● BEFORE USING THE PRINTER STATUS MONITOR .....	34
USING THE PRINTER UTILITY .....	35
● STARTING UP THE PRINTER UTILITY.....	35
● USING THE PRINTER UTILITY .....	35
● CHANGING THE PRINTER STATUS MONITOR SETTINGS .....	35
● CHECKING THE PRINTER STATUS .....	36

## 6

### PRINTING FROM MACINTOSH

<b>BASIC PRINTING .....</b>	<b>37</b>
● IF THE TRAY RUNS OUT OF PAPER DURING PRINTING.....	38
● CANCEL A PRINT JOB .....	38
● WHEN "PAPER FEED" IS SET TO "AUTO SELECT" .....	38

## 7

### WEB FUNCTIONS IN THE MACHINE

<b>ABOUT THE WEB PAGES.....</b>	<b>39</b>
● HOW TO ACCESS THE WEB PAGE AND VIEW HELP .....	39
<b>ABOUT THE WEB PAGES (FOR USERS) ....</b>	<b>40</b>
<b>CONFIGURING THE PRINTER CONDITION SETTINGS.....</b>	<b>41</b>
● HOW TO CONFIGURE THE SETTINGS .....	41
● PRINTER CONDITION SETTING MENU .....	42
● PRINTER CONDITION SETTINGS .....	42
<b>ABOUT THE WEB PAGES (FOR THE ADMINISTRATOR) .....</b>	<b>44</b>
<b>PROTECTING INFORMATION PROGRAMMED IN THE WEB PAGE ([Passwords]).....</b>	<b>45</b>
<b>KEY OPERATOR PROGRAMS.....</b>	<b>46</b>
● CONFIGURING A SETTING IN THE KEY OPERATOR PROGRAMS.....	46
● KEY OPERATOR PROGRAMS.....	47
<b>E-MAIL STATUS AND E-MAIL ALERT SETTINGS.....</b>	<b>48</b>
● INFORMATION SETUP .....	48
● SMTP SETUP .....	48
● STATUS MESSAGE SETUP .....	49
● ALERTS MESSAGE SETUP .....	49

## 8

### BEFORE USING THE SCAN TO USB AND NETWORK SCANNER FUNCTION

<b>ABOUT THE SCAN TO USB AND NETWORK SCANNER FUNCTION .....</b>	<b>50</b>
<b>SETTINGS AND PROGRAMMING REQUIRED FOR THE NETWORK SCANNER FEATURE .....</b>	<b>51</b>
● HOW TO ACCESS THE WEB PAGE AND VIEW HELP .....	51
<b>ABOUT THE WEB PAGE (FOR USERS) .....</b>	<b>52</b>
● STORING SCANNING SETTINGS - Scan to USB .....	53
● STORING SCANNING SETTINGS - Network Scanning .....	54
● STORING DESTINATIONS .....	55
<b>ABOUT THE WEB PAGE (FOR THE ADMINISTRATOR) .....</b>	<b>60</b>
● BASIC SETTINGS FOR NETWORK SCANNING .....	61
● VARIOUS SERVER SETTINGS .....	62
● PROTECTING INFORMATION PROGRAMMED IN THE WEB PAGE ([Passwords]) .....	63

## 9

### USING THE NETWORK SCANNER FUNCTION

<b>BASIC TRANSMISSION PROCEDURE.....</b>	<b>64</b>
● TRANSMISSION METHODS FOR SCAN TO E-MAIL .....	66
● IMAGE ORIENTATION AND STANDARD ORIGINAL LOADING ORIENTATION .....	68
● HOW TO ENTER CHARACTERS .....	68

## 10

### TROUBLESHOOTING

<b>TROUBLESHOOTING .....</b>	<b>69</b>
● CHECK THE CONNECTIONS .....	69
● REMOVING THE SOFTWARE .....	71
● DISPLAY MESSAGES .....	71
● IF YOUR E-MAIL IS RETURNED .....	71
● IMPORTANT POINTS WHEN USING SCAN TO E-MAIL .....	72

## 11

### SHARPDESK CD-ROM (for Windows)

#### **SOFTWARE PROGRAMS..... 73**

- SHARPDESK (Desktop Document Management Software).....73
- NETWORK SCANNER TOOL .....73
- SHARP TWAIN AR/DM .....73

#### **USER'S GUIDES FOR SOFTWARE PROGRAMS ..... 74**

#### **INSTALLING THE SOFTWARE PROGRAM..... 75**

- INSTALLING SHARPDESK AND NETWORK SCANNER TOOL .....75
- INSTALLING SHARP TWAIN AR/DM .....76

#### **UNINSTALLING THE SOFTWARE PROGRAM..... 76**

- UNINSTALLING THE SOFTWARE PROGRAM FROM THE CONTROL PANEL.....76

## 12

### SPECIFICATIONS

#### **PRINTER SPECIFICATIONS..... 77**

#### **SCANNER SPECIFICATIONS..... 78**

#### **PRINTER DRIVER SPECIFICATIONS ..... 79**

---

---

## CD-ROMS AND SOFTWARE

### CD-ROMS IN THE NETWORK EXPANSION KIT

The network expansion kit contains the following two CD-ROMs: "Software CD-ROM" and "Sharpdesk".



**The Printer Status Monitor on the "Software CD-ROM" cannot be used when the machine is connected to your computer by a USB.**

#### "Software CD-ROM"

The "Software CD-ROM" contains the following software programs (PC-Fax):

##### Software for Windows

- **Printer driver**

These allow the machine to be used as a printer.

- **PCL6 printer driver**

The machine supports the Hewlett-Packard PCL6 printer control languages.

- **PS printer driver**

The PS printer driver supports the PostScript 3 page description language developed by Adobe Systems Incorporated.

- **PPD driver**

The PPD driver enables the machine to use the standard Windows PS printer driver.

- **Scanner driver**

The scanner driver allows you to use the scanning function of the machine with TWAIN-compliant and WIA-compliant applications.

- **Printer Status Monitor**

This allows you to check the status of the network printer on your computer screen.

- **Button Manager**

Button Manager allows you to use the scanner menus on the machine to scan a document.

##### Software for Macintosh

- **PPD file**

This is the printer description file which enables the machine to be used as a PostScript 3 compatible printer. The PS3 expansion kit is required to use the machine in a Macintosh environment.

#### "Sharpdesk" CD-ROM (for Windows)

Sharpdesk is a desktop document management application that makes it easy to start applications and file documents and images.

For information on the "Sharpdesk" CD-ROM and the procedure for installing Sharpdesk, see "[SHARPDESK CD-ROM \(for Windows\)](#)" (p.73).

## SYSTEM REQUIREMENTS

Before installing the software described in this manual, make sure that your computer satisfies the following requirements.

	Windows	Macintosh
Operating system*1	Windows 2000 Professional, Windows XP Professional, Windows XP Home Edition, Windows Server 2003, Windows Vista, Windows Server 2008, Windows 7	Mac OS X v10.2.8*2 Mac OS X v10.3.9*2 Mac OS X v10.4.11 Mac OS X v10.5 to 10.5.8 Mac OS X v10.6 to 10.6.4
Computer type	IBM PC/AT compatible computer Equipped with a USB port and a 10Base-T/100Base-TX LAN board.	An environment in which any of the operating systems listed above can fully operate (including Macintosh computers with an Intel processor).
Display	1,024 x 768 resolution (SVGA) with 256 colours or higher (32,000 colours (16 bit) or higher is recommended)	
Other hardware requirements	An environment that allows any of the above operating systems to fully operate.	

\*1 Printing is not possible in MS-DOS mode.

\*2 Only available through Web page release.

## SOFTWARE REQUIREMENTS

The following requirements must be met to use the software described in this manual.

Operating system environment	Software	Required expansion kits
Windows	PCL6 printer driver	—
	PS printer driver, PPD driver	PS3 expansion kit
	Printer Status Monitor	—
Macintosh	Macintosh PPD driver	PS3 expansion kit

# USER PROGRAMS FOR THE NETWORK EXPANSION KIT

When the network expansion kit is installed in the machine, the following programs are added to the user programs for Print mode.

The IP address and other network settings are configured using these user programs.



The procedure for selecting a user program setting is explained in "SELECTING A SETTING FOR A USER PROGRAM" in the operation guide for the machine.

## Additional user programs for Print mode

Program number	Program name	Settings (factory default settings appear in bold)	Explanation
4	ENABLE TCP/IP	<b>1: YES</b> 2: NO	This program must be enabled to use the machine on a TCP/IP network. "IP ADDRESS SETTING" must also be configured. This program is initially enabled (factory default setting).
5	ENABLE DHCP	<b>1: YES</b> 2: NO	If "YES" is selected (factory default setting) and the machine is connected to a TCP/IP network, the IP address will be acquired automatically. If you will manually assign an IP address using "IP ADDRESS SETTING", select "NO".
6	IP ADDRESS SETTING	• IP ADDRESS • SUBNETMASK • DEFAULT GATEWAY	This program is used to set the IP address (IP address, Subnet Mask, and Gateway) of the machine when TCP/IP protocol is used on the network. When "ENABLE DHCP" is selected, the machine will obtain an IP address automatically. This is the factory default setting.



# 2

# SETUP IN A WINDOWS ENVIRONMENT

## INSTALLING THE SOFTWARE



- If you need to use a different connection method after installing the software using a USB or network connection, you must first uninstall the software and then install it using the new connection method.
- In the following explanations it is assumed that the mouse is configured for right hand operation.
- The scanner feature only works when using a USB cable.
- If an error message appears, follow the instructions on the screen to solve the problem. After the problem is solved, the installation procedure will continue. Depending on the problem, you may have to click the "Cancel" button to exit the installer. In this case, reinstall the software from the beginning after solving the problem.

## USING THE MACHINE WITH A USB CONNECTION

### 1 The USB cable must not be connected to the machine. Make sure that the cable is not connected before proceeding.

If the cable is connected, a Plug and Play window will appear. If this happens, click the "Cancel" button to close the window and disconnect the cable.



The cable will be connected in step 12.

### 2 Insert the CD-ROM into your computer's CD-ROM drive.

### 3 Click the "start" button, click "My Computer" ( ), and then double-click the CD-ROM icon ( ).

- On Windows Vista/7, click the "Start" button, click "Computer", and then double-click the CD-ROM icon.
- On Windows 2000, double-click "My Computer", and then double-click the CD-ROM icon.

### 4 Double-click the "setup" icon ( ).

On Windows Vista/7, if a message screen appears asking you for confirmation, click "Allow".

### 5 The "SOFTWARE LICENSE" window will appear. Make sure that you understand the contents of the software license, and then click the "Yes" button.

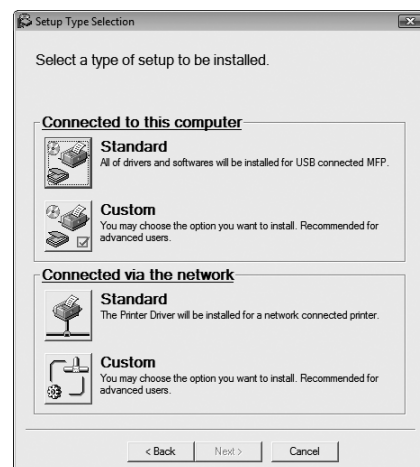


You can show the "SOFTWARE LICENSE" in a different language by selecting the desired language from the language menu. To install the software in the selected language, continue the installation with that language selected.

### 6 Read the "Readme First" in the "Welcome" window and then click the "Next" button.

### 7 To install all of the software, click the "Standard" button and go to step 11.

To install particular packages, click the "Custom" button and go to next step.



## 8 Click the "MFP Driver" button.

Click the "Display Readme" button to show information on packages that are selected.



## 9 The files required for installation of the MFP driver are copied.

Follow the on-screen instructions.

When "The installation of the SHARP software is complete." appears, click the "OK" button.

### ! Caution

- If you are using Windows Vista or 7 and a security warning window appears, be sure to click "Install this driver software anyway".
- If you are running Windows 2000/XP and a warning message appears regarding the Windows logo test or digital signature, be sure to click "Continue Anyway" or "Yes".

## 10 You will return to the window of step 8. If you wish to install Button Manager, click the "Button Manager" button.

If you do not wish to install Button Manager, click the "Close" button and go to step 12.



After the installation, a message prompting you to restart your computer may appear. In this case, click the "Yes" button to restart your computer.

## Installing the Utility Software

## 11 When installing is finished, click the "Close" button.

### ! Caution

- If you are using Windows Vista or 7 and a security warning window appears, be sure to click "Install this driver software anyway".
- If you are running Windows 2000/XP and a warning message appears regarding the Windows logo test or digital signature, be sure to click "Continue Anyway" or "Yes".

A message will appear instructing you to connect the machine to your computer. Click the "OK" button.



After the installation, a message prompting you to restart your computer may appear. In this case, click the "Yes" button to restart your computer.

## 12 Make sure that the power of the machine is turned on, and then connect the USB cable (p.11).

Windows will detect the machine and a Plug and Play screen will appear.

## 13 Follow the instructions in the plug and play window to install the driver.

Follow the on-screen instructions.

### ! Caution

- If you are using Windows Vista or 7 and a security warning window appears, be sure to click "Install this driver software anyway".
- If you are running Windows 2000/XP and a warning message appears regarding the Windows logo test or digital signature, be sure to click "Continue Anyway" or "Yes".

**This completes the installation of the software.**

If you installed Button Manager, set up Button Manager as explained in machine's Operation Guide.

## CONNECTING A USB CABLE

Follow the procedure below to connect the machine to your computer.

A USB cable for connecting the machine to your computer is not included with the machine. Please purchase the appropriate cable for your computer.

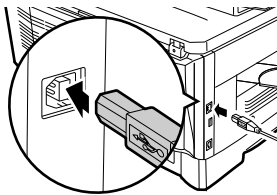
### ! Caution

- USB is available with a PC/AT compatible computer that was originally equipped with USB and had Windows 2000 Professional, Windows XP, Windows Vista or Windows 7 preinstalled.
- Do not connect the USB cable before installing the printer driver. The USB cable should be connected during installation of the printer driver.

### Note

- If the machine will be connected using a USB 2.0 port of your computer, please purchase a USB cable that supports USB 2.0.
- To obtain the fastest USB 2.0 data transfer speed, "USB2.0 MODE SWITCH" in the machine's user programs must be set to "HI-SPEED". For more information, see the Operation Guide of the machine.
- Use the machine's "HI-SPEED" mode only when using a computer that is running Windows 2000/XP/Vista or 7.
- Even when the Microsoft USB 2.0 driver is used, it may not be possible to obtain full USB 2.0 speed if a PC card supporting USB 2.0 is used. To obtain the latest driver (which may enable a higher speed), contact the manufacturer of your PC card.
- Connection is also possible using a USB 1.1 port on your computer. However, the specifications will be USB 1.1 specifications (Full-Speed).

### 1 Insert the cable into the USB connector on the machine.



### 2 Insert the other end of the cable into your computer's USB port.

# USING THE MACHINE AS A NETWORK PRINTER



Interface cables for connecting the machine to your computer are not included with the machine. Please purchase the appropriate cable for your computer.

## 1 Insert the LAN cable into the LAN connector on the machine.

Use a network cable that is shielded.

## 2 Turn on the machine.

## 3 Insert the "Software CD-ROM" into your computer's CD-ROM drive.

## 4 Click the "start" button, click "My Computer" ( ), and then double-click the CD-ROM icon ( ).

- In Windows Vista/7, click the "Start" button, click "Computer", and then double-click the "CD-ROM" icon.
- In Windows 2000, double-click "My Computer" and then double-click the CD-ROM icon.

## 5 Double-click the "setup" icon ( ).

In Windows Vista/7, if a message screen appears asking you for confirmation, click "Allow".

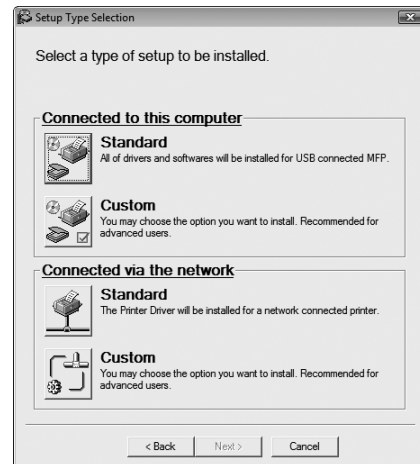
## 6 The "SOFTWARE LICENSE" window will appear. Make sure that you understand the contents of the license agreement, and then click the "Yes" button.



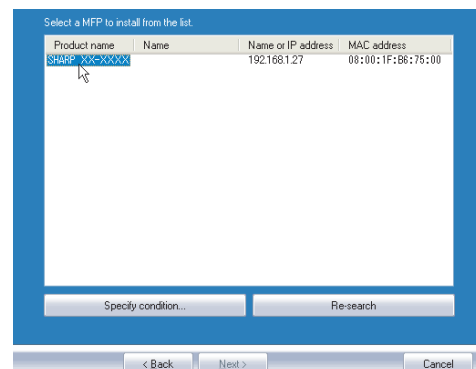
You can show the "SOFTWARE LICENSE" in a different language by selecting the desired language from the language menu. To install the software in the selected language, continue the installation with that language selected.

## 7 Read the message in the "Welcome" window and then click the "Next" button.

## 8 Click the "Standard" button of the "Connect via the network" menu.



## 9 Printers connected to the network are detected. Select the machine and click the "Next" button.

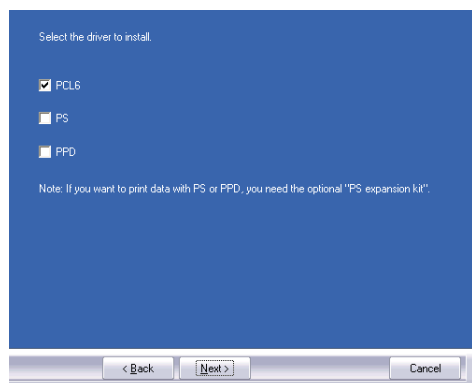


If the machine is not found, make sure that the machine is powered on and connected to your computer and then search again. If the machine is still not found, use the custom installation procedure to directly specify the IP address.

## 10 A confirmation window appears. Check the contents and then click the "Next" button.

## 11 When the printer driver selection window appears, select the printer driver to be installed and click the "Next" button.

Select the checkboxes of the printer drivers to be installed.



To use the PS printer driver, the PS3 expansion kit must be installed.

## 12 Select whether or not you wish the printer to be your default printer and click the "Next" button.

If you are installing multiple printer drivers, select the printer that you wish to use as your default printer.

If you do not wish to set either printer driver as the default printer, select "No".



If you clicked the "Custom installation" button in step 7, the following windows will appear.

- **Printer name window**  
If you wish to change the printer name, enter the desired name and click the "Next" button.
- **Window confirming installation of the display fonts**  
To install the display fonts for the PCL printer driver, select "Yes" and click the "Next" button.  
If you are not installing the PCL printer driver (you are installing the PS printer driver), select "No" and click the "Next" button.

## 13 Follow the on-screen instructions.

Read the message in the window that appears and click the "Next" button.

Installation begins.



- **If you are using Windows 2000/XP/Server 2003**  
If a warning message regarding the Windows logo test or digital signature appears, be sure to click the "Continue Anyway" or "Yes" button.
- **If you are using Windows Vista/7**  
If a security warning window appears, be sure to click "Install this driver software anyway".

## 14 When the installation completed screen appears, click the "OK" button.

## 15 Click the "Close" button.



After the installation, a message prompting you to restart your computer may appear. In this case, click the "Yes" button to restart your computer.

**This completes the installation of the software.**

- After installation, see "[CONFIGURING THE PRINTER DRIVER](#)" (p.19) to check the printer driver settings.
- To install the Printer Status Monitor, see "[INSTALLING THE PRINTER STATUS MONITOR](#)" (p.16).



If you installed the PS printer driver, the PS display font can be installed from the "PRINTER UTILITIES" CD-ROM that accompanied the PS3 expansion kit. ([p.17](#))

# SHARING THE PRINTER USING WINDOWS NETWORKING

If the machine will be used as a shared printer on a network, follow these steps to install the printer driver in the client computer.



To configure the appropriate settings in the print server, see the operation manual or help file of your operating system.

"Print server" as explained here, is a computer that is directly connected to the machine, and a "Client" is any other computer that is connected to the same network.

**1** Insert the "Software CD-ROM" into your computer's CD-ROM drive.

**2** Click the "start" button, click "My Computer" ( ), and then double-click the CD-ROM icon ( ).

- In Windows Vista/7, click the "Start" button, click "Computer", and then double-click the "CD-ROM" icon.
- In Windows 2000, double-click "My Computer" and then double-click the CD-ROM icon.

**3** Double-click the "setup" icon ( ).

In Windows Vista/7, if a message screen appears asking you for confirmation, click "Allow".

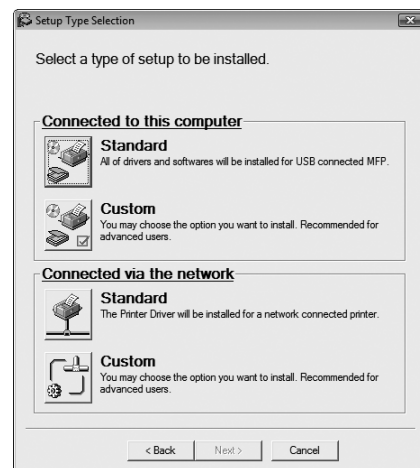
**4** The "SOFTWARE LICENSE" window will appear. Make sure that you understand the contents of the license agreement, and then click the "Yes" button.



You can show the "SOFTWARE LICENSE" in a different language by selecting the desired language from the language menu. To install the software in the selected language, continue the installation with that language selected.

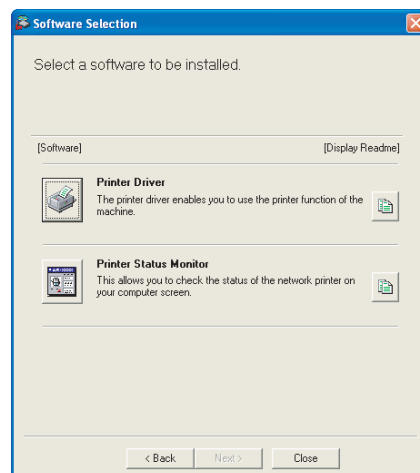
**5** Read the message in the "Welcome" window and then click the "Next" button.

**6** Click the "Custom" button of the "Connect via the network" menu.



**7** Click the "Printer Driver" button.

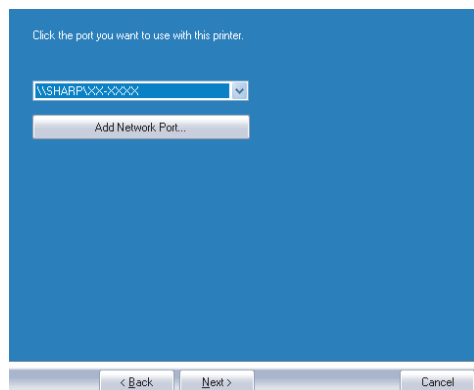
To view information on the software, click the "Display Readme" button.



**8** Select "Shared Printer" and click the "Next" button.

## 9 For the port to be used, select the machine set as a shared printer, and click the "Next" button.

If you are using Windows 2000/XP, you can also click the "Add Network Port" button and select the printer to be shared by browsing the network in the window that appears. (In Windows Vista/7, the "Add Network Port" button does not appear.)

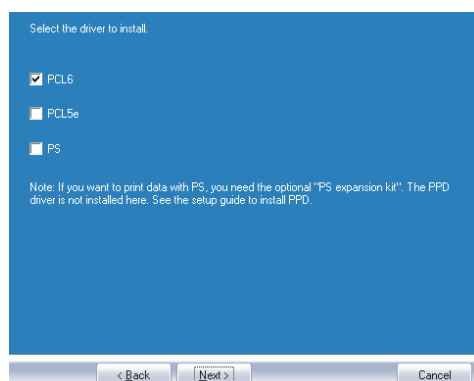


If the shared printer does not appear in the list, check the settings in the printer server.

## 10 When the model selection window appears, select model name of your machine and click the "Next" button.

## 11 When the printer driver selection window appears, select the printer driver to be installed and click the "Next" button.

Be sure to select the same printer driver as the printer driver used in the print server (the machine).



## 12 Follow the on-screen instructions.



- **If you are using Windows 2000/XP/Server 2003**  
If a warning message regarding the Windows logo test or digital signature appears, be sure to click the "Continue Anyway" or "Yes" button.
- **If you are using Windows Vista/7**  
If a security warning window appears, be sure to click "Install this driver software anyway".

## 13 When the installation completed screen appears, click the "OK" button.

## 14 Click the "Close" button in the window of step 7.



After the installation, a message prompting you to restart your computer may appear. If this message appears, click the "Yes" button to restart your computer.

**This completes the installation of the software.**

- After installation, see ["CONFIGURING THE PRINTER DRIVER"](#) (p.19) to check the printer driver settings.
- To install the Printer Status Monitor, see ["INSTALLING THE PRINTER STATUS MONITOR"](#) (p.16).





If you installed the PS printer driver, the PS display font can be installed from the "PRINTER UTILITIES" CD-ROM that accompanied the PS3 expansion kit. ([p.17](#))



# INSTALLING THE PRINTER STATUS MONITOR

**1** Insert the "Software CD-ROM" into your computer's CD-ROM drive.

**2** Click the "start" button, click "My Computer" (  ), and then double-click the CD-ROM icon (  ).

- In Windows Vista/7, click the "Start" button, click "Computer", and then double-click the "CD-ROM" icon.
- In Windows 2000, double-click "My Computer" and then double-click the CD-ROM icon.

**3** Double-click the "setup" icon (  ).

In Windows Vista/7, if a message screen appears asking you for confirmation, click "Allow".

**4** The "SOFTWARE LICENSE" window will appear. Make sure that you understand the contents of the license agreement, and then click the "Yes" button.

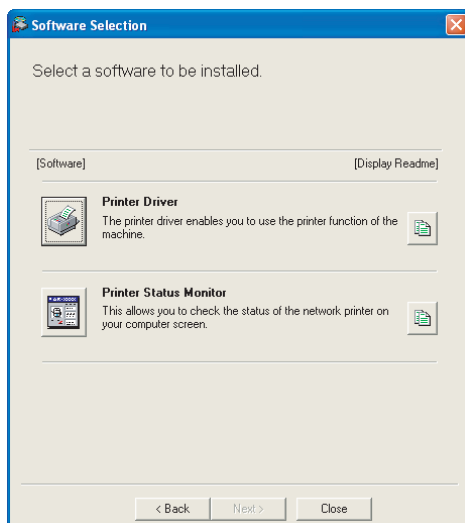


You can show the "SOFTWARE LICENSE" in a different language by selecting the desired language from the language menu. To install the software in the selected language, continue the installation with that language selected.

**5** Read the message in the "Welcome" window and then click the "Next" button.

**6** Click the "Printer Status Monitor" button.

To view information on the software, click the "Display Readme" button.



**7** Follow the on-screen instructions.

**8** When the installation completed screen appears, click the "Finish" button.

To have the Printer Status Monitor start automatically when your computer is started, select the "Add this program to your Startup folder" checkbox.

**9** Click the "Close" button in the window of step 6.



After the installation, a message prompting you to restart your computer may appear. If this message appears, click the "Yes" button to restart your computer.

**This completes the installation.**

For the procedures for using the Printer Status Monitor, see the Help file. Follow these steps to view the Help file:

Click the Windows "start" button, select "All Programs" ("Programs" in Windows 2000), select "SHARP Printer Status Monitor" and then select "Help".



# INSTALLING THE PS DISPLAY FONTS

The fonts used by the PS printer driver are contained in the "PRINTER UTILITIES" CD-ROM that accompanied the PS3 expansion kit. Install these fonts as needed for the PS printer driver.

## 1 Insert the "PRINTER UTILITIES" CD-ROM into your computer's CD-ROM drive.

If your computer is configured for auto start on the CD-ROM, proceed to step 4.

## 2 Click the "start" button, click "My Computer" ( ), and then double-click the CD-ROM icon ( ).

- In Windows Vista/7, click the "Start" button, click "Computer", and then double-click the "CD-ROM" icon.
- In Windows 2000, double-click "My Computer", and then double-click the CD-ROM icon.

## 3 Double-click the "setup" icon ( ).

In Windows Vista/7, if a message screen appears asking you for confirmation, click "Allow".

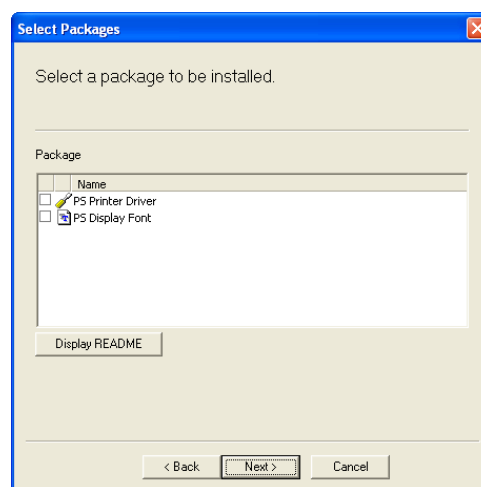


**Note** If the language selection screen appears after you double click the "setup" icon, select the language that you wish to use and click the "Next" button. (Normally the correct language is selected automatically.)

## 4 Select the "PS Display Font" checkbox and click the "Next" button.



**Caution** Do not select "PS Printer Driver". The PS printer driver for the machine should only be installed from the CD-ROM that accompanies the network expansion kit.



## 5 Follow the on-screen instructions.

---

---

# USING THE PPD FILE

The PPD file enables the machine to print using the standard PS driver of the operating system, and can be used when the optional PS3 expansion kit is installed. Install the PPD file as needed.

Use the Add Printer Wizard in Windows to install the PPD file.

Be sure to read the Readme file before installing the PPD file. The Readme file is in the "EnglishA" folder. For the location of the folder, see step [4](#).

---

## **1** Click the "start" button, click "Control Panel", click "Printers and Other Hardware", and then click "Printers and Faxes".

- In Windows Vista/7, click the "Start" button, click "Control Panel" and then click "Printer".
- In Windows Server 2003, click the "Start" button and then click "Printers and Faxes".
- In Windows 2000, click the "Start" button, select "Settings", and then click "Printers".

---

## **2** Insert the "Software CD-ROM" into your computer's CD-ROM drive.

---

## **3** Click "Add a printer" in "Printer Tasks".

- In Windows Vista/7, click "Add a printer" from the tool bar.
- In Windows 2000, double-click the "Add Printer" icon.  
The "Add Printer Wizard" will appear.

---

## **4** Follow the on-screen instructions.

When you are asked to specify the path of the PPD file, enter the path as follows.

(Substitute the letter of your CD-ROM drive for "R" in the following paths.)

Operating system	PPD file path
Windows 2000/XP/ Server 2003/2008/ Vista/7	R:\Drivers\Printer \English\PPD\2KXPVista

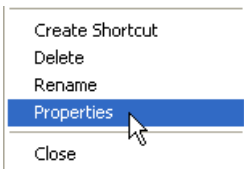
# CONFIGURING THE PRINTER DRIVER

After installing the printer driver, you must configure the printer driver settings appropriately for the number of paper trays on the machine and the size of paper loaded in each tray.

## 1 Click the "start" button, click "Control Panel", click "Printers and Other Hardware", and then click "Printers and Faxes".

- In Windows Vista/7, click the "Start" button, click "Control Panel" and then click "Printer".
- In Windows Server 2003, click the "Start" button and then click "Printers and Faxes".
- In Windows 2000, click the "Start" button, select "Settings", and then click "Printers".

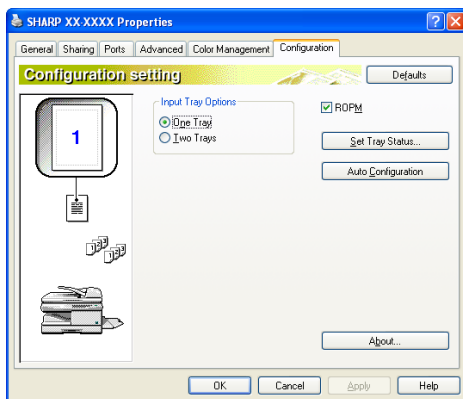
## 2 Click the "SHARP XX-XXXX" printer driver icon and select "Properties" from the "File" menu.



- If you are using Windows 2000/XP/Server 2003/ Vista/Server 2008/7, go to step 3.
- In Windows Vista/7, from the "Organize" menu select "Properties".

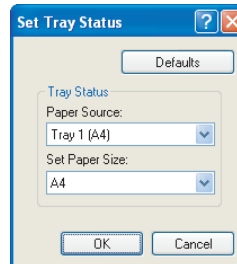
## 3 Click the "Configuration" tab and set the printer configuration based on the options that have been installed.

Set the printer configuration properly. Otherwise, printing may not take place correctly.



To automatically configure the settings based on the detected machine status, click the "Auto Configuration" button.

## 4 Click the "Set Tray Status" button and select the size of paper that is loaded in each tray.



Select a tray in the "Paper source" menu, and select the size of paper loaded in that tray from the "Set Paper Size" menu. Repeat for each tray.

## 5 Click the "OK" button in the "Set Tray Status" window.

## 6 Click the "OK" button in the printer properties window.

# 3

# SETUP IN A MACINTOSH ENVIRONMENT

This chapter explains how to install the PPD file to enable printing from a Macintosh and how to configure the printer driver settings.

- **MAC OS X:** this page  
(v10.2.8, v10.3.9, v10.4.11, v10.5 - v10.5.8, v10.6 - v10.6.4)



To use the machine as a printer in a Macintosh environment, the PS3 expansion kit is necessary.

## MAC OS X



The explanations of screens and procedures are primarily for Mac OS X v10.4. The screens may vary in other versions of the operating system.

**1** Insert the "Software CD-ROM" into your computer's CD-ROM drive.

**2** Double-click the CD-ROM icon (📀) on the desktop.

**3** Double-click the "MacOSX" folder.  
Before installing the software, be sure to read "ReadMe First". "ReadMe First" is in the "US-English" folder in the "Readme" folder.

**4** Double-click the folder corresponding to the versions of the operating system.

**5** Double-click the "MX-NB11" icon (📀).



If the "Authenticate" window appears in Mac OS X v10.2.8, enter the password and click the "OK" button.

**6** Click the "Continue" button.



**7** The License Agreement window will appear. Make sure that you understand the contents of the license agreement and then click the "Continue" button.

A message will appear asking you if you agree to the terms of the license. Click the "Agree" button.



If the license appears in the different language, change the language in the language menu.

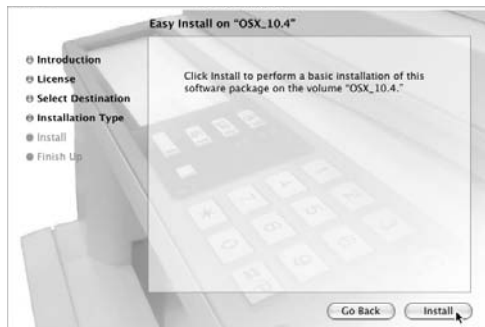
## 8 Select the hard drive where the PPD file will be installed and click the "Continue" button.

Be sure to select the hard drive on which your operating system is installed.



## 9 Click the "Install" button.

Installation begins.

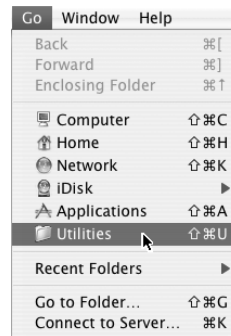


If the "Authenticate" window appears, enter the password and click the "OK" button.

## 10 When the message "The software was successfully installed" appears in the installation window, click the "Close" button.

This completes the installation of the software. Next, configure the printer driver settings.

## 11 Select "Utilities" from the "Go" menu.



If you are using Mac OS X v10.2.8, select "Applications" from the "Go" menu.

## 12 Double-click the "Printer Setup Utility" icon ( ).

If you are using Mac OS X v10.2.8, double-click the "Utilities" folder and then double-click the "Print Centre" icon.

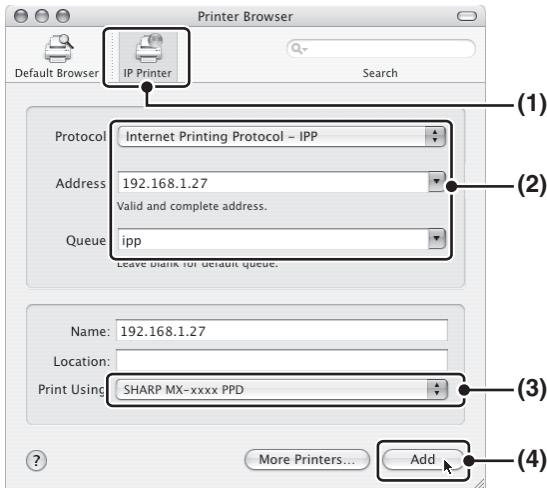


If this is the first time you are installing a printer driver on your computer, a confirmation message will appear. Click the "Add" button.

## Printing using the IPP function

The machine can print using the IPP function. When the machine is in a remote location, this function can be used in place of the fax function to print a higher quality image than a fax. If you wish to use the IPP function, follow these steps to select the PPD file when configuring the printer driver.

### v10.4.11, v10.5 - 10.5.8, v10.6 - 10.6.4



**(1) Click the [IP Printer] icon.**

If you are using Mac OS X v10.5 to 10.5.8 or v10.6 to 10.6.4, click the [IP] icon.

**(2) Select [Internet Printing Protocol] in "Protocol".**

Enter the address of the machine (IP address or domain name) and the queue name. Enter "ipp" in "Queue".

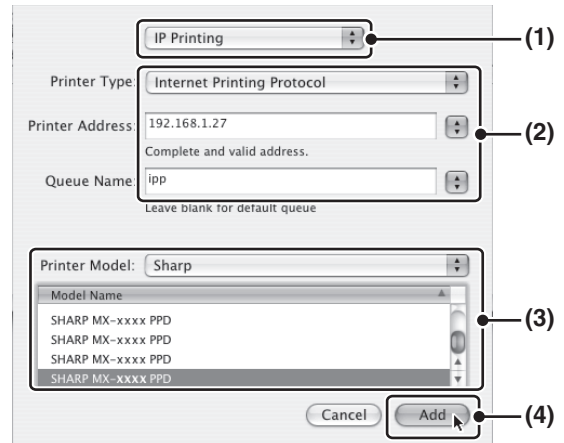
**(3) Select [Sharp] in "Print Using" and click the PPD file of your model.**

If you are using Mac OS X v 10.5 to 10.5.8 or v10.6 to 10.6.4, select [Select a driver to use] (or [Select Printer Software]) from "Print Using" and click the PPD file for your model.

**(4) Click the [Add] button.**

The "Installable Options" screen will appear. Make sure that the settings are correct and click the [Continue] button.

### v10.2.8, v10.3.9



**(1) Select [IP Printing].**

**(2) Select [Internet Printing Protocol] in "Printer Type". Enter the address of the machine (IP address or domain name) and the "Queue Name".**

- If you are using Mac OS X v10.2.8, enter the address of the machine (IP address or domain name) in "Printer's Address".
- Enter "ipp" in "Queue Name".

**(3) Select [Sharp] in "Printer Model" and click the PPD file of your model.**

**(4) Click the [Add] button.**

# 4

# PRINTING FROM WINDOWS

---

---

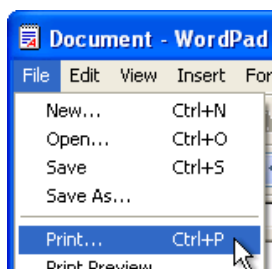
## BASIC PRINTING

The following example explains how to print a document from WordPad.

Before printing, make sure that the correct size of paper for your document has been loaded in the machine.

**1 Start WordPad and open the document that you wish to print.**

**2 Select "Print" from the application's "File" menu.**



The "Print" dialog box will appear.

**3 Make sure that "SHARP XX-XXXX" is selected as the printer. If you need to change any print settings, click the "Preferences" button to open the printer driver setup screen.**

The printer driver setup screen will appear.



Windows 2000 does not have the "Preferences" button in this dialog box. Select settings as needed on each of the tabs in the setup screen.

• ["PRINTER DRIVER SETTINGS"](#) (p.26),  
• ["TWO-SIDED PRINTING"](#) (p.27), ["PRINTING MULTIPLE PAGES ON ONE PAGE"](#) (p.29),  
• ["FITTING THE PRINTED IMAGE TO THE PAPER"](#) (p.30), ["ROTATING THE PRINT IMAGE 180 DEGREES"](#) (p.31), ["PRINTING A WATERMARK"](#) (p.32)

**4 Click the "Print" button.**

Printing begins.

The print job is delivered to the output tray, with the position of the paper offset slightly from the previous job (offset function).

## IF THE TRAY RUNS OUT OF PAPER DURING PRINTING

Printing will automatically resume when paper is loaded in the tray.

When using the bypass tray, select printer mode with the mode select key on the machine, load paper as instructed by the message in the display, and then press the [START] key to resume printing.

### When the 250-sheet paper feed unit is installed:

Note that if the "AUTO TRAY SWITCH" setting in the user programs is enabled and there is the same size of paper in another tray, the machine will automatically switch to the other tray and continue printing.

## CANCEL A PRINT JOB

To cancel a print job that is already in progress, select printer mode with the mode select key on the machine and then press the [CLEAR] key ( **C** ) or the [CLEAR ALL] key ( **CA** ).

"CANCEL PRINT JOB?" will appear in the display. Select "YES" and press the [ENTER] key.

## WHEN "PAPER SOURCE" IS SET TO "AUTO SELECT"

If "Paper Source" is set to "Auto Select" in the "Paper" tab of the printer driver setup screen and the correct size of paper for a print job is not loaded in the machine, the printing procedure will vary depending on the "FORCED OUTPUT" setting in the user programs (see "USER PROGRAMS" in the Operation Guide for the machine).

### When "FORCED OUTPUT" is set to "OFF"

Select printer mode with the mode select key on the machine, check the message in the display, load paper in the bypass tray, and then press the [START] key to begin printing.

### When "FORCED OUTPUT" is set to "ON"

Printing takes place on the paper loaded in the machine, even though the paper size is different from the print image size.



---

---

# OPENING THE PRINTER DRIVER FROM THE "START" BUTTON

Printer driver settings can be configured by opening the printer driver from the Windows "start" button. Settings adjusted in this way will be the initial settings when you print from an application. (If you change the settings in the printer driver setup screen at the time of printing, the settings will revert to the initial settings when you quit the application.)

---

## **1 Click the "start" button, and then click "Control Panel".**

- On Windows 2000, click the "Start" button and select "Settings".
- On Windows Server 2003, click the "Start" button and then click "Printers and Faxes". Go to step 3.

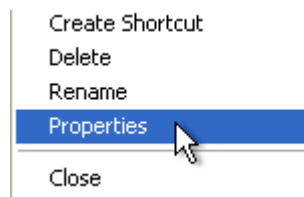
---

## **2 Click "Printers and Other Hardware", and then click "Printers and Faxes".**

- On Windows Vista/7, click "Printer".
- On Windows 2000, click "Printers".

---

## **3 Click the "SHARP XX-XXXX" printer driver icon and select "Properties" from the "File" menu.**



On Windows Vista/7, select "Properties" from the "Organize" menu.



---

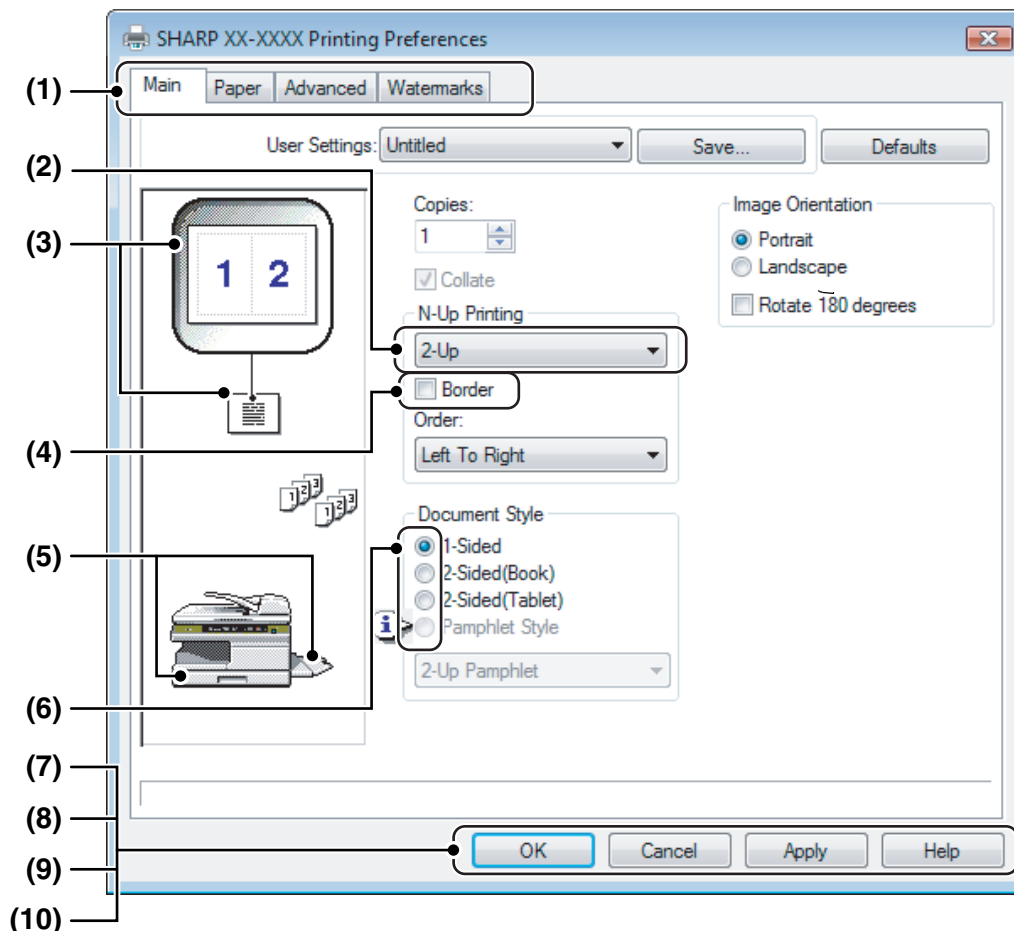
## **4 Click the "Printing Preferences" button in the "General" tab.**

The printer driver setup screen will appear.

➤ ["PRINTER DRIVER SETTINGS" \(p.26\)](#)

# PRINTER DRIVER SETTINGS

To view Help for a setting, click the  button in the upper right-hand corner of the window and then click the setting. Some restrictions exist on the combinations of settings that can be selected in the printer driver setup screen. When a restriction is in effect, an information icon (  ) will appear next to the setting. Click the icon to view an explanation of the restriction.



**(1) Tab**

The settings are grouped on tabs. Click on a tab to bring it to the front.

**(2) Drop-down list**

Allows you to make a selection from a list of choices.

**(3) Print setting image**

This shows the effect of the selected print settings.

**(4) Checkbox**

Click on a checkbox to activate or deactivate a function.

**(5) Machine image**

The paper tray (in blue) selected in "Paper selection" on the "Paper" tab.

You can also click on a tray to select it.

**(6) Check button**

Allows you to select one item from a list of options.

**(7) "OK" button**

Click this button to save your settings and exit the dialog box.

**(8) "Cancel" button**

Click this button to exit the dialog box without making any changes to the settings.

**(9) "Apply" button**

Click to save your settings without closing the dialog box.

**(10) "Help" button**

Click this button to display the help file for the printer driver.



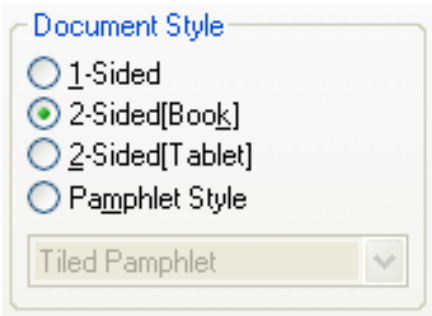
The settings and the image of the machine will vary depending on the model. The printer driver setup screen allows you to select various functions that can be used when the network expansion kit is installed. For information on the printer functions of the network expansion kit, see "[PRINTER DRIVER SPECIFICATIONS](#)" (p.79).

# TWO-SIDED PRINTING

The printer driver setup screen of models that support two-sided printing contains a "Document Style" setting in the "Main" tab. This feature allows you to print on both sides of the paper.

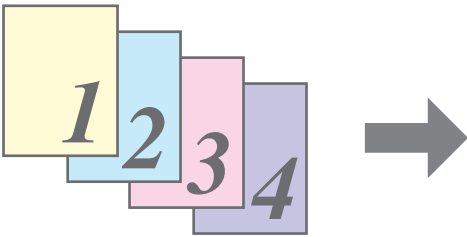
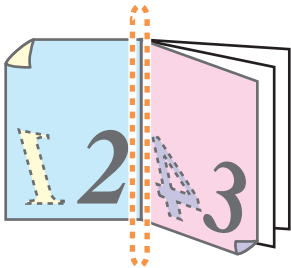
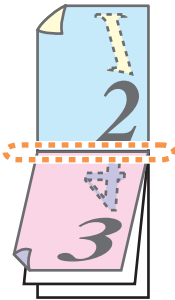
To use this function, open the printer driver setup screen and select "2-Sided (Book)" or "2-Sided (Tablet)" from "Document Style" in the "Main" tab.

See "[BASIC PRINTING](#)" (p.23) for details on how to open the printer driver.



- Paper sizes that can be used for two-sided printing are Letter, Legal, Folio\*, Invoice, A4, A5, B5, Foolscap, and 16K.
- When using two-sided printing, select a source other than "Bypass Tray" for the "Paper Source" in the "Paper" tab.
- For two-sided printing on Folio size paper, "Tray 1" or "Tray 2" (if Tray 2 has been installed) must be selected in the "Paper Source" on the "Paper" tab.

The following example shows the result when portrait data is printed on both sides of the paper.

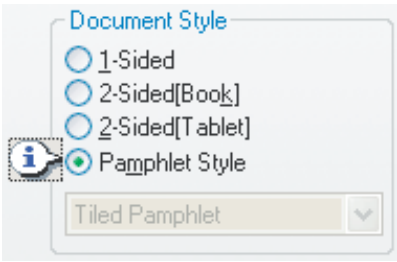
Print data	Printing result	
	2-Sided (Book)	2-Sided (Tablet)
		
	The pages are printed so that they can be bound at the side.	The pages are printed so that they can be bound at the top.

# PAMPHLET STYLE

Pamphlet style prints two pages each on the front and back of each sheet of paper (four pages total on one sheet) so that the sheets can be folded down the centre and bound to create a pamphlet. This function is convenient when you wish to compile printed pages into a pamphlet.

To use this function, open the printer driver and select "Pamphlet Style" in "Document Style" in the "Main" tab.

The direction of opening of the pamphlet can be selected with the "Right Turning Pamphlet" checkbox in the "Advanced" tab. The following examples show how 8 pages are printed when pamphlet style is selected.



Print data	Printing result	
	<input type="checkbox"/> Right Turning Pamphlet	<input checked="" type="checkbox"/> Right Turning Pamphlet



- Only letter, invoice, A4 and A5 size paper can be used for pamphlet style printing.
- Because four pages are printed on each sheet of paper, blank pages are automatically added at the end when the total number of pages is not a multiple of four.
- When "Tiled Pamphlet" is selected, printing will take place on paper that is twice the size of the paper size specified in the application.
- When "2-Up Pamphlet" is selected, each page is reduced in the same way as for 2-Up and printed on the size of paper that is specified in the application.


# PRINTING MULTIPLE PAGES ON ONE PAGE

This feature allows you to reduce and print two, four, six, eight or sixteen document pages on a single sheet of paper.

To use this function, open the printer driver setup screen and select the number of pages per sheet (2-Up, 4-Up, 6-Up, 8-Up, 9-Up, or 16-Up) in "N-Up Printing" in the "Main" tab.

The order of the pages can be changed in the "Order" menu.

See ["BASIC PRINTING"](#) (p.23) for details on how to open the printer driver.

The "N-Up Printing" setting is not available when "Fit To Paper Size" is selected.  
See ["FITTING THE PRINTED IMAGE TO THE PAPER"](#) (p.30)

For example, when "2-Up" or "4-Up" is selected, the result will be as follows depending on the selected order.

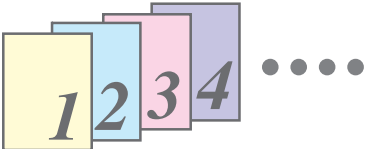
N-Up Printing

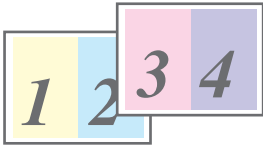
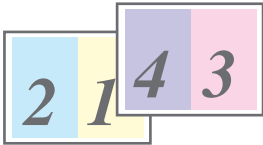




4-Up

☐ Border


Order

Right, and Down



N-Up	Left to Right	Right to Left		
[2-Up]				
N-Up	Right , and Down	Down , and Right	Left , and Down	Down , and Left
[4-Up]				

If you select the "Border" checkbox, borderlines will be printed around each page.

Examples for 2-Up and 4-Up are shown here. The order of 6-Up, 8-Up, 9-Up, and 16-Up is the same as 4-Up. The order can be viewed in the print setting image in the printer driver setup screen.  
See ["PRINTER DRIVER SETTINGS"](#) (p.26)

# FITTING THE PRINTED IMAGE TO THE PAPER

The printer driver can adjust the size of the printed image to match the size of the paper loaded in the machine. Follow the steps shown below to use this function. The explanation below assumes that you intend to print A4 size document onto B5 size paper.

See ["BASIC PRINTING"](#) (p.23) for details on how to open the printer driver.



The "Fit To Paper Size" setting is not available when "N-Up Printing" is selected.

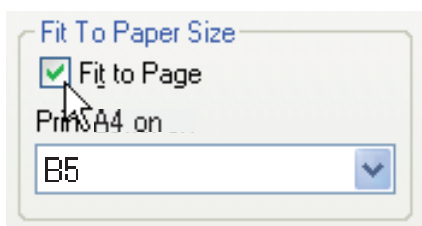
See ["PRINTING MULTIPLE PAGES ON ONE PAGE"](#) (p.29)

**1** Click the "Paper" tab in the printer driver setup screen.

**2** Select the original size (A4) of the print image in "Paper Size".

**3** Check the "Fit to Page" box.

When using the PS printer driver, select "Fit To Paper Size" in "Zoom Setting".



**4** Select the actual size of paper to be used for printing (B5).

The size of the printed image will be automatically adjusted to match the paper loaded in the machine.

Paper Size: A4

Fit To Paper Size: B5



A4 size document  
(Paper Size)



B5 size paper  
(Fit To Paper Size)



- If "A3 [Fit to Page]", "B4 [Fit to Page]", or "Ledger [Fit to Page]" is selected, the print image is fit to the A4 (letter) size even if "Fit to Page" is not selected.
- When using the PS printer driver, the print image can be enlarged or reduced by means of numerical values. (The vertical and horizontal ratios can be set separately.) Select "XY-Zoom" in step 3, click the "Width/Length" button, and adjust the ratios in the screen that appears.

# ROTATING THE PRINT IMAGE 180 DEGREES

The print image can be rotated 180 degrees.  
This feature is used to enable correct printing on envelopes and other paper with flaps that can only be loaded in one orientation.  
To use the feature, select the image orientation in "Image Orientation" on the "Paper" tab, and then select the "Rotate 180 degrees" checkbox.  
See "[BASIC PRINTING](#)" (p.23) for details on how to open the printer driver.



Printing result	
<input checked="" type="checkbox"/> Rotate 180 degrees	<input type="checkbox"/> Rotate 180 degrees
<div>DCBA</div>	<div>ABCD</div>



The procedure for loading paper is explained in the operation Guide for the machine.

---

---

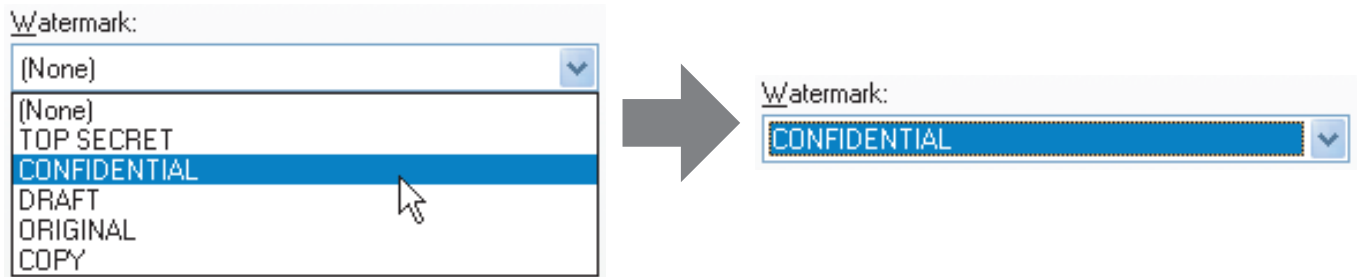
# PRINTING A WATERMARK

You can print a watermark such as "CONFIDENTIAL" on your document. To print a watermark, open the printer driver, click the "Watermarks" tab, and follow the steps below.

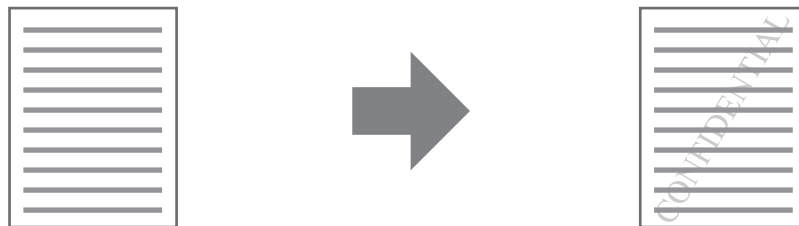
See ["BASIC PRINTING"](#) (p.23) for details on how to open the printer driver.

## HOW TO PRINT A WATERMARK

From the "Watermark" drop-down list, select the watermark that you wish to print (for example "CONFIDENTIAL"), and start printing.



### Print sample



You can enter text to create your own custom watermark. For details on watermark settings, view printer driver Help.

See ["PRINTER DRIVER SETTINGS"](#) (p.26)




# PRINTING TEXT AND LINES/GRAPHICS IN BLACK

Colour text, lines and vector graphics that are faint when printed normally can be printed in black to improve legibility.

## PRINTING TEXT IN BLACK

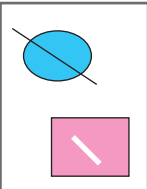
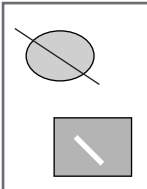
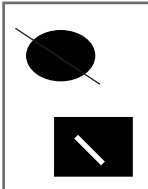
Text that is any colour other than white is printed in black.  
To use this function, open the printer driver setup screen and select the "Text To Black" checkbox in the "Advanced" tab.


Print data	Printing result	
	<input type="checkbox"/> Text To Black	<input checked="" type="checkbox"/> Text To Black
<div>ABCD EFGH</div> ➔	<div>ABCD EFGH</div>	<div>ABCD EFGH</div>

 When using the PCL6 printer driver, if "Print as graphics" is selected in "TrueType Mode" of "Font" in the "Advanced" tab, this function cannot be used.

## PRINTING LINES AND VECTOR GRAPHICS IN BLACK

Lines and vector graphics that are any colour other than white are printed in black.  
To use this function, open the printer driver setup screen and select the "Vector To Black" checkbox in the "Advanced" tab.

Print data	Printing result	
	<input type="checkbox"/> Vector To Black	<input checked="" type="checkbox"/> Vector To Black
<div></div> ➔	<div></div>	<div></div>

 When using the PCL6 printer driver, if "Raster" is selected in "Graphics mode" in the "Advanced" tab, this function cannot be used.

---

---

## PRINTER UTILITY

### Printer Status Monitor (for general users)

"Printer Status Monitor" is on the "Software CD-ROM".

This allows the user to check on the computer screen whether or not the machine is able to print.

It provides information on error states such as paper misfeeds and shows the configuration of the machine (number of trays, etc.) by means of illustrations. Available paper sizes and paper remaining are also indicated.



- In order to use the Printer Status Monitor, the machine must be connected to a network.
- To install the Printer Status Monitor, see "[INSTALLING THE PRINTER STATUS MONITOR](#)" (p.16).

## BEFORE USING THE PRINTER STATUS MONITOR

Note the following points before using the Printer Status Monitor.

### Printing via a server

When the first print job is executed after starting up the Printer Status Monitor, the machine's IP address is automatically set in the Printer Status Monitor.

### Direct printing without a server

Install and configure the software as explained in "INSTALLING THE PRINTER DRIVER" in the software setup guide for network printer. (This is not necessary if the software has already been installed and configured.)

---

# USING THE PRINTER UTILITY

## STARTING UP THE PRINTER UTILITY

If the Printer Status Monitor is not running, use the following procedure to start the utilities.

### Printer Status Monitor

Click the "Start" button, point to "All Programs" ("Programs" in Windows 2000) and then "SHARP Printer Status Monitor". Select "Printer Status Monitor".

## USING THE PRINTER UTILITY

For information on using the Printer Status Monitor, see the Help file. The Help file can be viewed as follows:

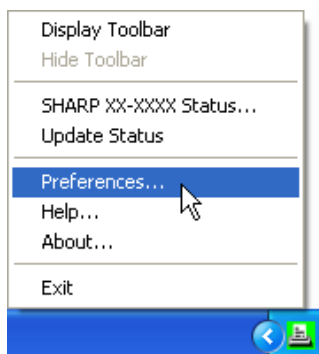
### Printer Status Monitor

Click the "Start" button, point to "All Programs" ("Programs" in Windows 2000) and then "SHARP Printer Status Monitor". Select "Help".

## CHANGING THE PRINTER STATUS MONITOR SETTINGS

Once installed, the Printer Status Monitor normally runs in the background in Windows. If you need to change the Printer Status Monitor settings, follow the steps below.

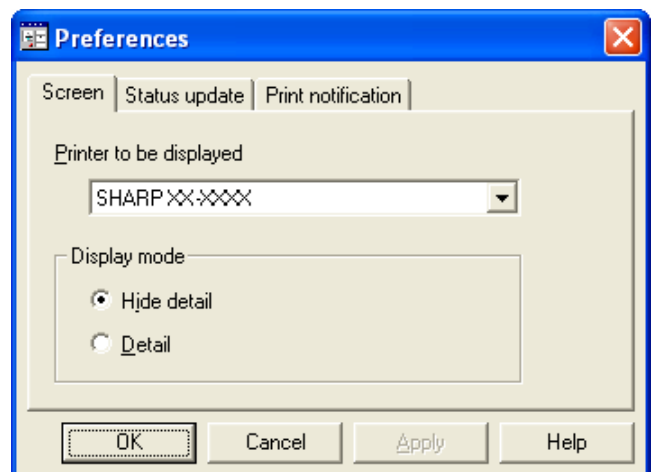
- 1 Right-click the Printer Status Monitor icon (  ) on the task bar, and select "Preferences" from the pop-up menu.**



If the Printer Status Monitor icon does not appear on the task bar, see "[STARTING UP THE PRINTER UTILITY](#)" (p.35) to start the Printer Status Monitor.


- 2 Change the Printer Status Monitor settings as desired.**

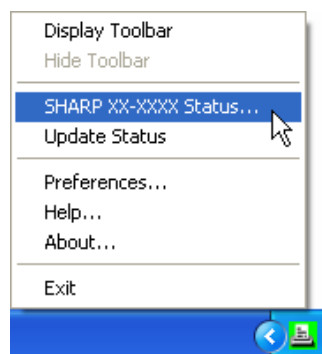
For information on the Printer Status Monitor settings, see Printer Status Monitor Help. (Click the "Help" button in the settings window.)



# CHECKING THE PRINTER STATUS

The Printer Status Monitor allows you to check whether or not toner and paper remain in the machine.

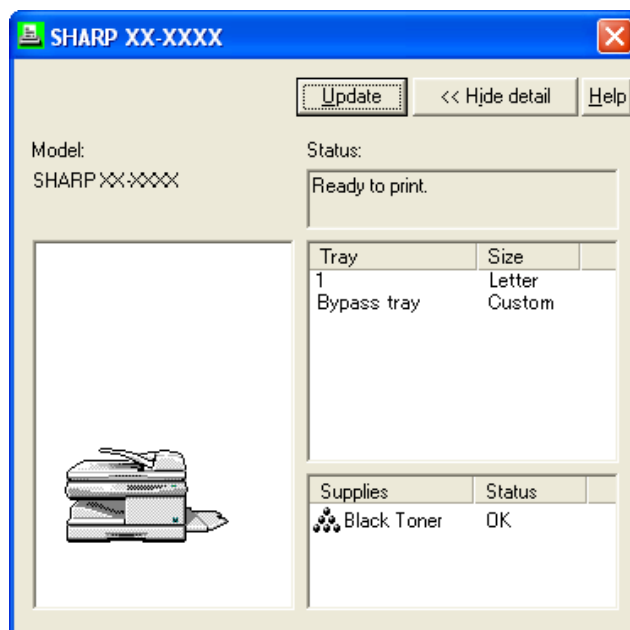
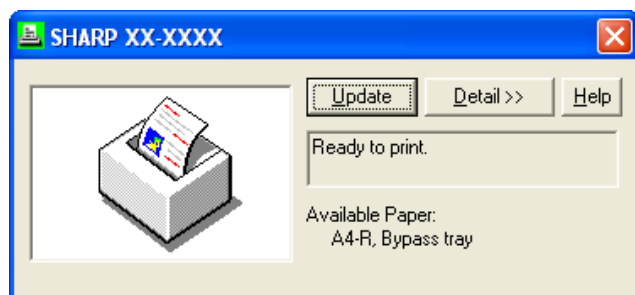
- 1 Right-click the Printer Status Monitor icon (  ) on the task bar, and select "SHARP XX-XXXX Status" from the pop-up menu.**



The icon turns red when printing is not possible due to a machine error or other problem.

- 2 Click the "Detail" button.**

The window expands to show machine status details.



To collapse the window, click the "Hide detail" button.



By default, the collapsed window initially appears when "SHARP XX-XXXX Status" is selected in Step 1. If desired, you can change the setting to have the expanded window initially appear.

➔ ["CHANGING THE PRINTER STATUS MONITOR SETTINGS"](#) (p.35)

# 6

# PRINTING FROM MACINTOSH

## BASIC PRINTING

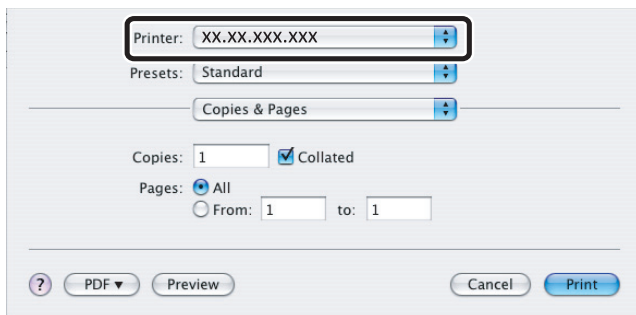
To use the machine as a printer for the Macintosh, the PS3 expansion kit (MX-PK10) must be installed and the machine must be connected to a network. To install the PPD file and configure the printer driver settings, see the software setup guide.

Before printing, make sure that the correct size of paper for your document has been loaded in the machine.

**1 Start the application and open the document that you wish to print.**

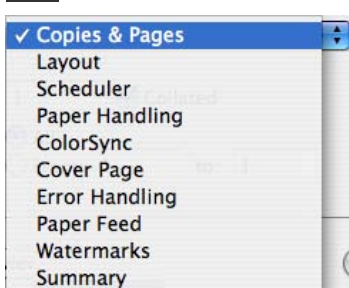
**2 Select "Print" from the application's "File" menu.**


**3 Make sure that the correct printer is selected.**



The Print window varies depending on the operating system version, the printer driver version, and the application.

**4 Configure print settings.**

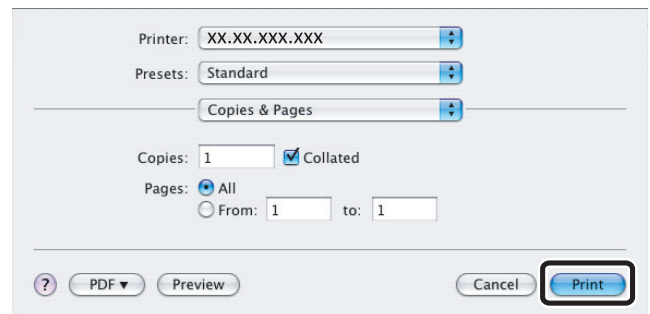


Click  next to "Copies & Pages" and select the settings that you wish to configure from the pull-down menu. The corresponding setting screen will appear.



The settings vary depending on the operating system version, the printer driver version, and the application.

**5 Click the "Print" button.**



Printing begins.

## IF THE TRAY RUNS OUT OF PAPER DURING PRINTING

Printing will automatically resume when paper is loaded in the tray.

When using the bypass tray, select printer mode with the mode select key on the machine, load paper as instructed by the message in the display, and then press the [START] key to resume printing.

### **When the 250-sheet paper feed unit is installed:**

Note that if the "AUTO TRAY SWITCH" setting in the user programs is enabled and there is the same size of paper in another tray, the machine will automatically switch to the other tray and continue printing.

## CANCEL A PRINT JOB

To cancel a print job that is already in progress, select printer mode with the mode select key on the machine and then press the [CLEAR] key ( **C** ) or the [CLEAR ALL] key ( **CA** ).

"CANCEL PRINT JOB?" will appear in the display. Select "YES" and press the [ENTER] key.

## WHEN "PAPER FEED" IS SET TO "AUTO SELECT"

If "Paper Feed" is set to "Auto Select" in the Print window and the correct size of paper for a print job is not loaded in the machine, the printing procedure will vary depending on the "FORCED OUTPUT" setting in the user programs (see "USER PROGRAMS" in the Operation Guide of the machine).

### **When "FORCED OUTPUT" is set to "OFF"**

Select printer mode with the mode select key on the machine, check the message in the display, load paper in the bypass tray, and then press the [START] key to begin printing.

### **When "FORCED OUTPUT" is set to "ON"**

Printing takes place on the paper loaded in the machine, even though the paper size is different from the print image size.

## ABOUT THE WEB PAGES

The network expansion kit includes a built-in Web server. The Web server is accessed using a Web browser on your computer. The Web pages include both pages for users and pages for the administrator. In the user Web pages, users can monitor the machine, directly print a file specified on a computer, and select printer configuration settings. In the administrator Web pages, the administrator can configure the machine's e-mail settings, settings for print by e-mail, and passwords. Only the administrator is allowed to configure these settings.

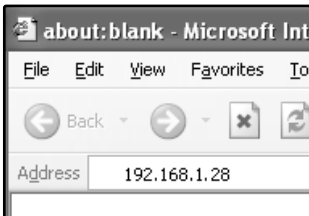
## HOW TO ACCESS THE WEB PAGE AND VIEW HELP

Use the following procedure to access the Web pages. [Help] can be clicked at the bottom of the menu frame to view information on the various function settings that can be configured remotely over the network from the machine's Web pages. For the settings of each function, see the explanations in Help.

### 1 Open the Web browser on your computer.

Supported browsers:  
Internet Explorer 5.5 or later (Windows)  
Netscape Navigator 6.0 or later

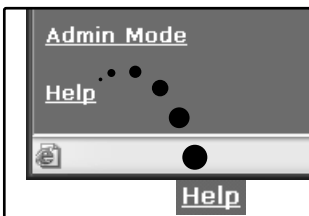
### 2 In the "Address" field of your Web browser, enter the IP address that has been configured in the machine.



When the connection is completed, the Web page will appear in your Web browser.

Click ["ABOUT THE WEB PAGES \(FOR USERS\)"](#) (p.40)


### 3 Click the [Help] button at the bottom of the menu frame.



To view information on a function setting, click the corresponding item in the Help screen.

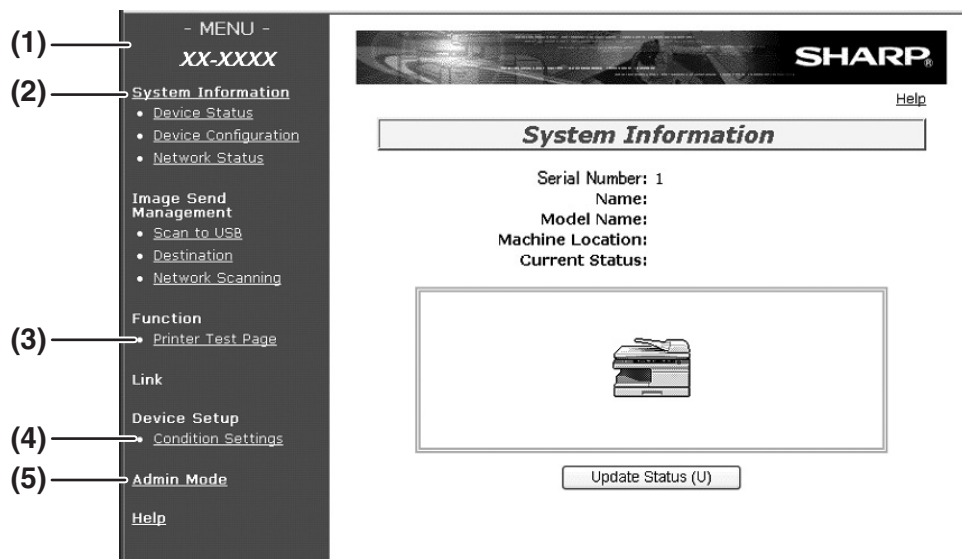
### 4 When finished, close the Web pages.



When you have finished using the Web pages, click the  (close) button in the top right corner of the page.

# ABOUT THE WEB PAGES (FOR USERS)

When you access the user Web pages in the machine, the following page will appear in your browser. A menu frame appears on the left side of the page. When you click an item in the menu, a screen appears in the right frame that allows you to configure settings for that item.



## (1) Menu frame

Click a setting in the menu to configure it.

## (2) System Information

Shows the current status of the machine and model name.

- Device Status  
Shows the current status of the machine, paper trays, output trays, toner and other supplies, and page counts.  
Out of paper and other warnings appear in red.
- Device Configuration  
Shows what options are installed.
- Network Status  
Shows the network status. Information on "General", and "TCP/IP" is shown on the respective pages.

## (3) Printer Test Page

The "Printer Settings List" and various font lists can be printed.

## (4) Condition Settings

Configure basic printer settings.

➤ ["CONFIGURING THE PRINTER CONDITION SETTINGS"](#) (p.41)

## (5) Admin Mode

To open the Web pages for the administrator, click here and then enter the administrator's user name and password.

➤ ["ABOUT THE WEB PAGES \(FOR THE ADMINISTRATOR\)"](#) (p.44)

➤ ["PROTECTING INFORMATION PROGRAMMED IN THE WEB PAGE \(\[Passwords\]\)"](#) (p.45)



# CONFIGURING THE PRINTER CONDITION SETTINGS

The printer condition settings allow basic printer settings to be configured. The following items can be set:

- "[Default Settings](#)" (p.42): Basic settings that are mainly used when the printer driver is not used.
  - "[PCL Settings](#)" (p.43): PCL symbol set, font, line feed code, and other settings.
  - "[PostScript Settings](#)" (p.43)\*: Sets whether or not a PostScript error page is printed when a PostScript error occurs.
- \* This setting is only appears when the PS3 expansion kit is installed.

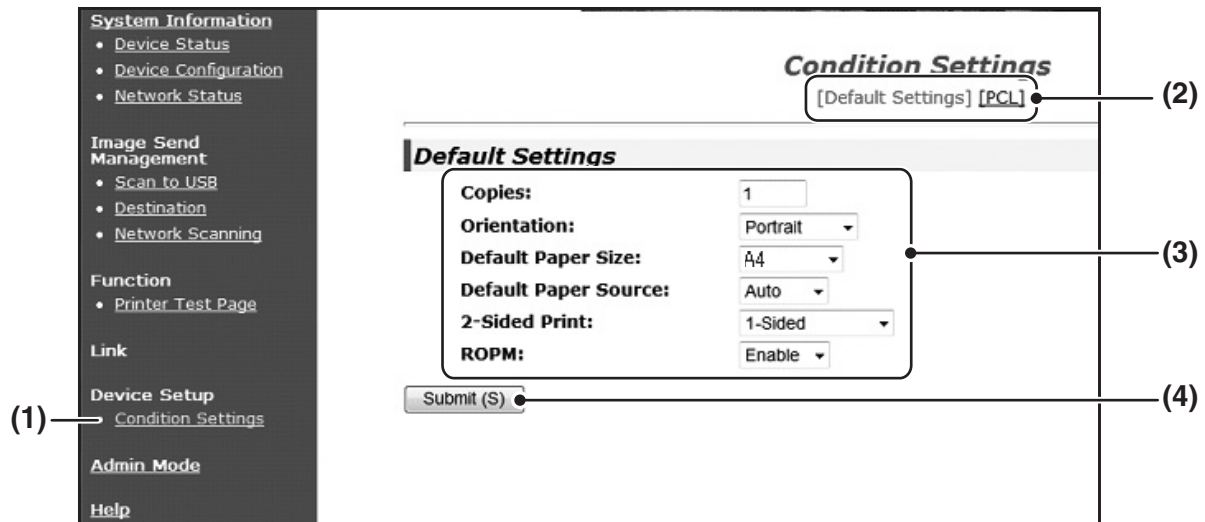


When the printer driver is used and the same settings are configured both in the printer driver and in the above screens, the settings configured in the printer driver override the settings in the above screens. If a setting is available in the printer driver, use the printer driver to configure the setting.

## HOW TO CONFIGURE THE SETTINGS

To display the Condition Settings screen, click [Condition Settings] in the menu frame.

For detailed explanations of the procedures for establishing settings, click [Help] in the menu frame.



### (1) Condition Settings

This displays the page for configuring the printer condition settings.

### (2) Default / PCL / PS

Select the type of condition settings that you wish to configure.

### (3) Settings

The factory default settings are displayed.

Change the settings as desired by selecting from drop-down lists and by directly entering settings.

For information on the settings, see "[PRINTER CONDITION SETTINGS](#)" (p.42).

### (4) Submit

Click to store the Web page settings in the machine.

# PRINTER CONDITION SETTING MENU

Click on a setting to view an explanation of the setting.

Condition Settings	
Default Settings	Factory default settings
<a href="#">Copies</a>	1
<a href="#">Orientation</a>	Portrait
<a href="#">Default Paper Size</a>	A4
<a href="#">Default Paper Source</a>	Auto
<a href="#">2-Sided Print</a>	1-Sided
<a href="#">ROPM (Rip Once, Print Many)</a>	Enable

Condition Settings	
PCL Settings	Factory default settings
<a href="#">Symbol Set</a>	PC-8
<a href="#">Font</a>	0: Courier (internal font)
<a href="#">Line Feed Code</a>	CR=CR; LF=LF; FF=FF
<a href="#">Wide A4</a>	Disable
PostScript Settings*	Factory default settings
<a href="#">Print PS Errors</a>	Disable

\* This setting is only appears when the PS3 expansion kit is installed.

## PRINTER CONDITION SETTINGS

Factory default settings are indicated in bold.

### Default Settings

Item	Selections	Description
Copies	1 - 999	This is used to select the number of copies.
Orientation	<b>Portrait</b> , Landscape	This sets the orientation of the printed page. Select [Portrait] when the image is longer in the vertical direction, or [Landscape] when the image is longer in the horizontal direction.
Default Paper Size	Invoice, A5, B5, <b>A4</b> , Letter, Foolscap, Legal	This sets the default paper size used for the printed image. Even if the set size of paper is not in any of the trays, the printed image is formed in accordance with this setting.
Default Paper Source	<b>Auto</b> , Tray 1, Tray 2*, Bypass (Auto)	Set the default paper tray. *Selections available depend on the trays that are installed.
2-Sided Print	<b>1-Sided</b> , 2-Sided (Book), 2-Sided (Tablet)	When [2-Sided (Book)] is selected, two-sided printing takes place so as to allow binding at the left side. When [2-Sided (Tablet)] is selected, two-sided printing takes place so as to allow binding at the top.
ROPM (Rip Once, Print Many)	<b>Enable</b> , Disable	This enables the ROPM function. When enabled, multi-page print jobs are stored in memory before printing, and thus the computer does not need to repeatedly send the print data when multiple copies are printed.

## PCL Settings

Item	Selections	Description
Symbol Set	Select one of 35 sets.	This specifies which country's characters (PCL symbol set) are assigned to certain of the symbols in the character code list. The factory default setting is [PC-8].
Font	Select one internal or one external font.	This specifies which PCL font to use for printing. One font can be specified from among the internal fonts. The factory default setting is [0: Courier].
Line Feed Code	<b>CR=CR; LF=LF; FF=FF,</b> CR=CR+LF; LF=LF; FF=FF, CR=CR; LF=CR+LF; FF=CR+FF, CR=CR+LF; LF=CR+LF; FF=CR+FF	This specifies the line break code by means of a combination of the "CR" (return) code, "LF" (line break) code, and "FF" (page break) code. The factory default setting is printing based on the transmitted code. The setting can be changed by selecting one of four combinations.
Wide A4	Enable, <b>Disable</b>	This setting can be enabled to print 80 lines on A4 size paper with each line 10CPI font (English characters). When the setting is disabled (a checkmark does not appear), each line is 78 characters long.

## PostScript Settings

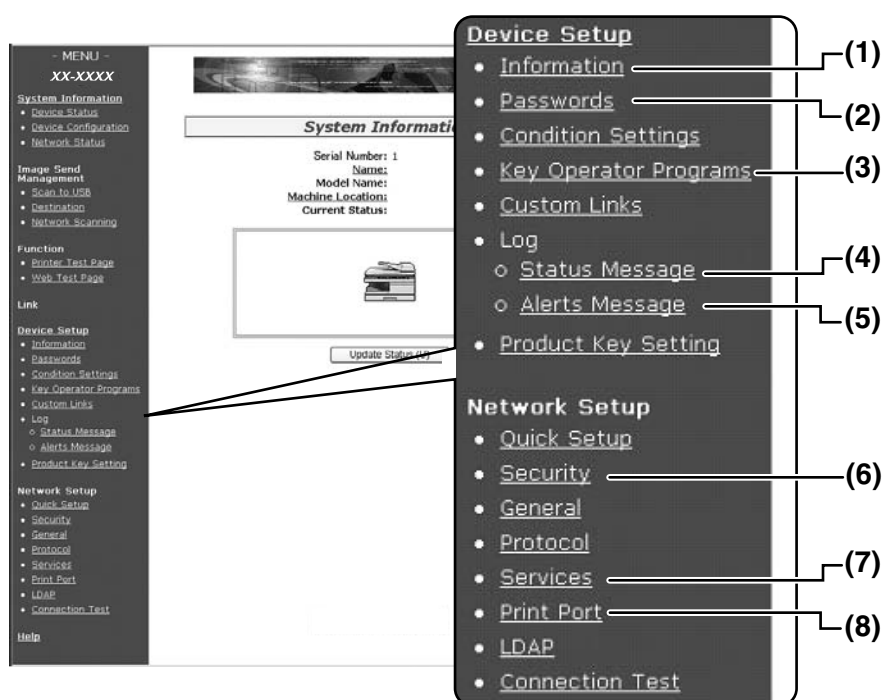
The "PostScript Settings" are only effective when the PS3 expansion kit is installed.

Item	Selections	Description
Print PS Errors	Enable, <b>Disable</b>	When this setting is enabled, an error description is printed each time a PostScript error occurs.

# ABOUT THE WEB PAGES (FOR THE ADMINISTRATOR)

In addition to the menus that appear for users, other menus that can only be used by the administrator appear in the administrator Web pages.

A menu frame appears on the left side of the page. When you click an item in the menu, a screen appears in the right frame that allows you to configure settings for that item. Settings that can only be configured by the administrator are explained here.



## (1) Information

Configure machine identification information for the status & alert E-mail function.

☞ "[INFORMATION SETUP](#)" (p.48)

## (2) Passwords

To protect the Web site, the system administrator can establish passwords. Enter a password that you would like to establish and click the [Submit] button.

One password can be established for the administrator and one password can be established for users.

☞ "[PROTECTING INFORMATION PROGRAMMED IN THE WEB PAGE \(\[Passwords\]\)](#)" (p.45)

## (3) Key Operator Programs

Setting changes can be prohibited and interface settings can be configured.

☞ "[KEY OPERATOR PROGRAMS](#)" (p.46)

## (4) Status Message

Configure parameters required for sending status messages, such as destination addresses and time schedules.

☞ "[STATUS MESSAGE SETUP](#)" (p.49)

## (5) Alerts Message

Store destination addresses for alert messages.

☞ "[ALERTS MESSAGE SETUP](#)" (p.49)

## (6) Security

Unused ports can be disabled for greater security and port numbers can be changed.

## (7) Services

Configure information concerning the e-mail system.

☞ "[SMTP SETUP](#)" (p.48)

## (8) Print Port

Configure settings for LPD and Raw print.

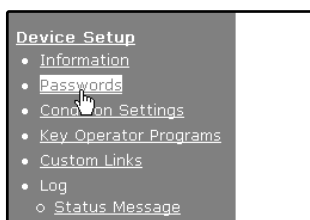
---

---

# PROTECTING INFORMATION PROGRAMMED IN THE WEB PAGE ([Passwords])

Passwords can be set (click [Passwords] in the menu frame) to restrict Web page access and protect settings. The administrator must change the password from the factory default setting. The administrator must also take care to remember the new password. The next time the Web pages are accessed, the new password must be entered. A password can be set for the administrator and a password can be set for users.

## 1 Click [Passwords] in the menu frame.



## 2 Enter the current password in "Admin Password".

When establishing a password for the first time, enter "Sharp" in "Admin Password".



Be sure to enter "S" in upper case and "harp" in lower case (passwords are case sensitive).

## 3 Enter passwords in "User Password" and "Admin Password".

- A maximum of 7 characters and/or numbers can be entered for each password (passwords are case sensitive).
- Be sure to enter the same password in "Confirm Password" as you did in "New Password".

## 4 When you have finished entering all items, click [Submit].

The entered password is stored.

**After setting the password, turn the machine power off and then back on.**



When prompted to enter a password, a user should enter "user" and an administrator should enter "admin" in "User Name". In "Password", the respective password for the entered user name should be entered. For more information, click [Help] in the upper right-hand corner of the window.

---

---

# KEY OPERATOR PROGRAMS

The key operator programs are used to prohibit changes to the [Condition Settings] and to configure interface settings.

- "[Default settings](#)" (p.47): Select the setting for which you wish to prohibit changes.
- "[Interface settings](#)" (p.47): Enable monitoring of data sent to the network port and set restrictions.

## CONFIGURING A SETTING IN THE KEY OPERATOR PROGRAMS

### 1 Click [Key operator programs] in the menu frame.

#### Device Setup

- [Information](#)
- [Passwords](#)
- [Condition Settings](#)
- [Key Operator Programs](#)
- [Custom Links](#)

The "Default Settings" screen of the [Key operator programs] will appear. If you wish to select a setting in the "Default Settings" screen, go to step [3](#).

### 3 Make a selection for the setting in the screen that appears.

See "[KEY OPERATOR PROGRAMS](#)" (p.47) for descriptions of the settings.

### 4 Click [Submit] to store the entered information.

### 2 Click the desired setting.

#### Key Operator Programs

[\[Default Settings\]](#) [\[Interface Settings\]](#)

#### Settings

Test Page Printing  
Default Setting Changes

## KEY OPERATOR PROGRAMS

When "YES, NO" appears in the "Settings" column, "YES" is selected when a checkmark appears in the checkbox of the item, and "NO" is selected when checkmark does not appear.

### Default settings

Item	Settings	Description
Prohibit Test Page Printing	YES, <b>NO</b>	This setting is used to prohibit printing of a printer test page.
Disable Default Setting Changes	YES, <b>NO</b>	This setting is used to prohibit changes to the default condition settings.

### Interface settings

Item	Settings	Description
Hexadecimal Dump Mode	YES, <b>NO</b>	This program is used to print out the print data from the computer in hexadecimal and in the corresponding text characters (based on ASCII code). This allows you to check whether or not print data is being correctly sent from the computer.
I/O Timeout	1- <b>60</b> - 999 (sec)	During reception of a print job, if remaining data is not received after the time set here elapses, the port connection is broken and the next print job is begun.
Emulation Switching	<b>Auto*</b> , PostScript*, PCL	Select the printer language. When [Auto] is selected, the language is automatically selected from the data sent to the printer. Unless errors occur frequently, do not change the setting from [Auto] to another setting. *Only when the PS3 expansion kit is installed.
Port Switching Method	<b>Switch at End of Job</b> , Switch after I/O Timeout	Select the method for switching network ports.

---

---

# E-MAIL STATUS AND E-MAIL ALERT SETTINGS

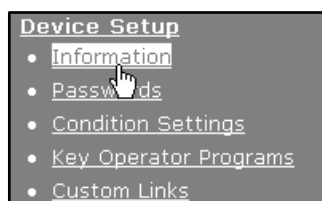
These functions send information on machine use (print count, copy count, etc.) and error conditions (paper misfeed, out of paper, out of toner, etc.) via e-mail to the administrator of the machine or the dealer.

## INFORMATION SETUP

Machine identification information for the status and alert e-mail functions is configured in the "Information Setup" screen. The entered information will be included in status and alert e-mail messages.

---

### 1 Click [Information] in the menu frame.



The "Information Setup" screen will appear.

---

### 2 Enter the machine information.

For detailed information, click the [Help] button in the upper right-hand corner of the window.

---

### 3 Click [Submit] to store the entered information.

## SMTP SETUP

The Status and alert e-mail functions use SMTP (Simple Mail Transport Protocol) to send e-mail. The following procedure is used to set up the e-mail environment. This must be done by the system administrator or other person familiar with the network.

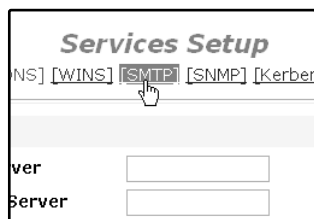
---

### 1 Click [Services] in the menu frame.

The "Services Setup" screen will appear.

---

### 2 Click [SMTP].



---

### 3 Enter the information required to set up the e-mail environment.

For detailed information, click the [Help] button in the upper right-hand corner of the window.

---

### 4 Click [Submit] to store the entered information.

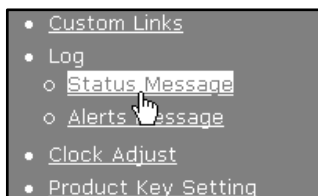


# STATUS MESSAGE SETUP

Use the status message function to send the current counter information, including the copy count, print count, and total output count, basis on the specified schedule. The destinations can be set for administrators and dealers respectively.

To set up the status message, follow these steps.

## 1 Click [Status Message] in the menu frame.



The "Status Message Setup" screen will appear.

## 2 Enter the required information, including the destination addresses and time schedule.

For detailed information, click the [Help] button in the upper right-hand corner of the window.

A screenshot of the 'Status Message Setup' web page. It has a title bar with 'Status Message Setup' and tabs for '[Standard]' and '[Advanced]'. Below is a section titled 'E-mail Status Message List 1' with an 'E-mail Address' input field. At the bottom, there are two checkboxes: 'Send by Schedule 1' and 'Send by Schedule 2', and a 'Send Now (1)' button.

## 3 Click [Submit] to store the entered information.

When the E-mail Status settings are completed, printer count information will be sent periodically by e-mail to the specified e-mail addresses.



If you quit the browser before clicking [Submit], the settings will be canceled. To send printer information immediately to the specified e-mail addresses, click [Send Now].

# ALERTS MESSAGE SETUP

Use the alert message function to send alert information, such as empty toner and paper and trouble including paper misfeeds, to specified destinations when such problems occur. The destinations can be set for administrators and dealers respectively.

To set up the alert message, follow the procedure below.

## 1 Click [Alerts Message] in the menu frame.



The "Alerts Message Setup" screen will appear.

## 2 Enter the destination addresses.

For detailed information, click the [Help] button in the upper right-hand corner of the window.

A screenshot of the 'Alerts Message Setup' web page. It has a title bar with 'Alerts Message Setup' and a 'Help' button in the top right. Below is a section titled 'E-mail Alert Message List 1' with an 'E-mail Address' input field. Below that is another section titled 'E-mail Alert Message List 2' with another 'E-mail Address' input field.

## 3 Click [Submit] to store the entered information.

If these parameters are set, event information for the printer will be transmitted to the specified addresses via E-mail each time a specified event occurs. The meaning of each event item is shown below.

(Example)

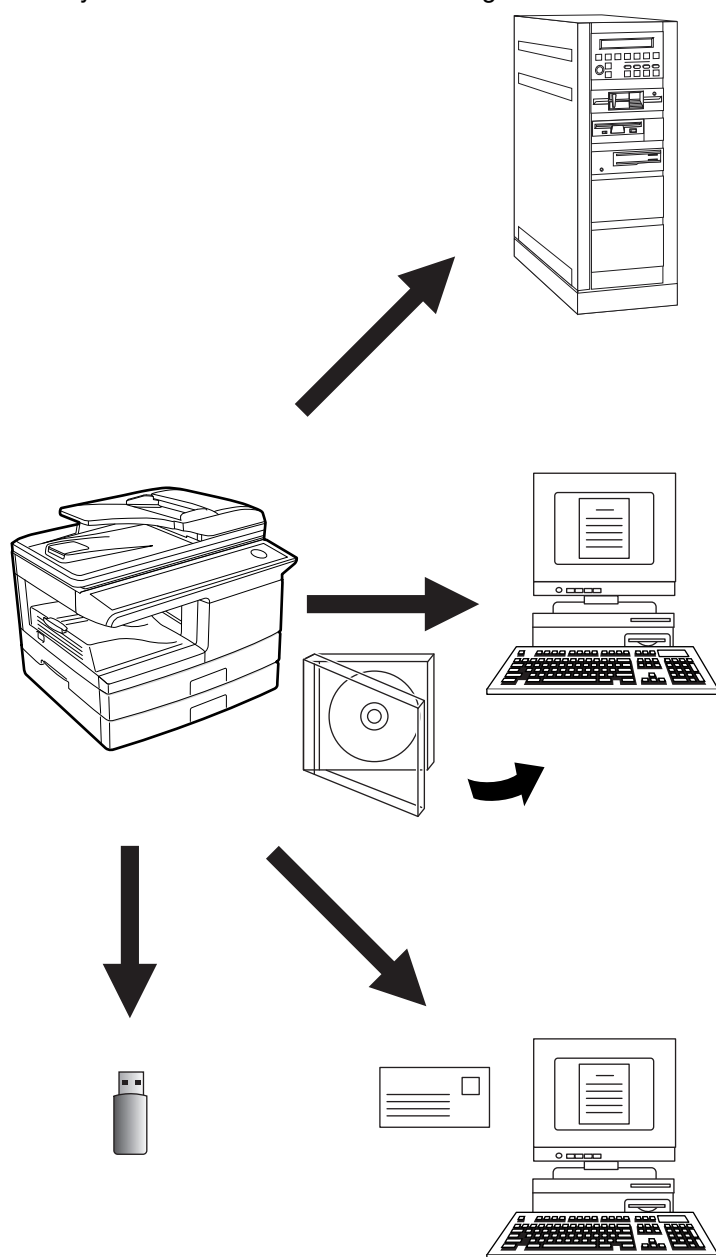
Paper Jam: A paper misfeed has occurred.  
Toner Low: Toner is low.  
Toner Empty: Toner must be added.  
Paper Empty: Paper must be loaded.



If you quit the browser before clicking [Submit], the settings will be canceled.

## ABOUT THE SCAN TO USB AND NETWORK SCANNER FUNCTION

With this machine a document or photo can be scanned into an image file and sent over a network or the Internet to a file server, e-mail destination, your own computer or USB memory installed on the machine. You can select from the following transmission methods as the destination where you wish to send the scanned image, depending on where you wish to send the scanned image data.



1. The scanned image can be sent to a memory storage device on a network (a designated directory on an FTP server). (This is called **"Scan to FTP"** in this manual.)

When sending a scanned image to an FTP server, an e-mail message can also be sent to a preset e-mail address to inform the recipient of the location of the scanned image data. (This is called **"Scan to FTP (Hyperlink)"** in this manual.)

2. A scanned image can be sent to a computer connected to the same network as the machine. (This is called **"Scan to Desktop"** in this manual.)

\* Before Scan to Desktop can be performed, the software in the CD-ROM that accompanies the network expansion kit (MX-NB11) must be installed. For the procedure for installing the software, see the "[SHARPDESK CD-ROM \(for Windows\)](#)" (p.73).

3. The scanned image can be sent to an e-mail recipient. (This is called **"Scan to E-mail"** in this manual.)

4. The scanned image can be sent to a USB memory installed on the machine. (This is called **"Scan to USB"** in this manual.)

---

---

# SETTINGS AND PROGRAMMING REQUIRED FOR THE NETWORK SCANNER FEATURE

To use the Network Scanner feature, settings for the SMTP server, DNS server, and destination addresses must be configured.

To configure the settings, use a computer that is connected to the same network as the machine to access the machine's Web server. The Web page can be viewed with your Web browser (Internet Explorer 5.5 or later (Windows), or Netscape Navigator 6.0 or later).

## HOW TO ACCESS THE WEB PAGE AND VIEW HELP

Use the following procedure to access the Web pages. [Help] can be clicked at the bottom of the menu frame to view information on the various function settings that can be operated remotely over the network from the machine's Web pages. For the settings of each function, see the explanations in Help.

---

### 1 Open the Web browser on your computer.

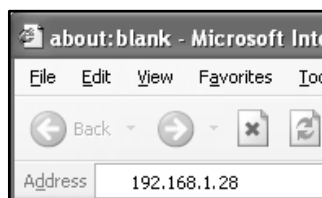
Supported browsers:

Internet Explorer 5.5 or later (Windows)

Netscape Navigator 6.0 or later

---

### 2 In the "Address" field of your Web browser, enter the IP address of the machine.

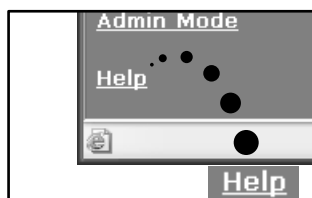


When the connection is complete, the Web page will appear in your Web browser.

See "[ABOUT THE WEB PAGE \(FOR USERS\)](#)" (p.52)

---

### 3 Click [Help] under the menu frame.




For an explanation of a function or setting in the Web page, click the corresponding item in the Help screen.

---

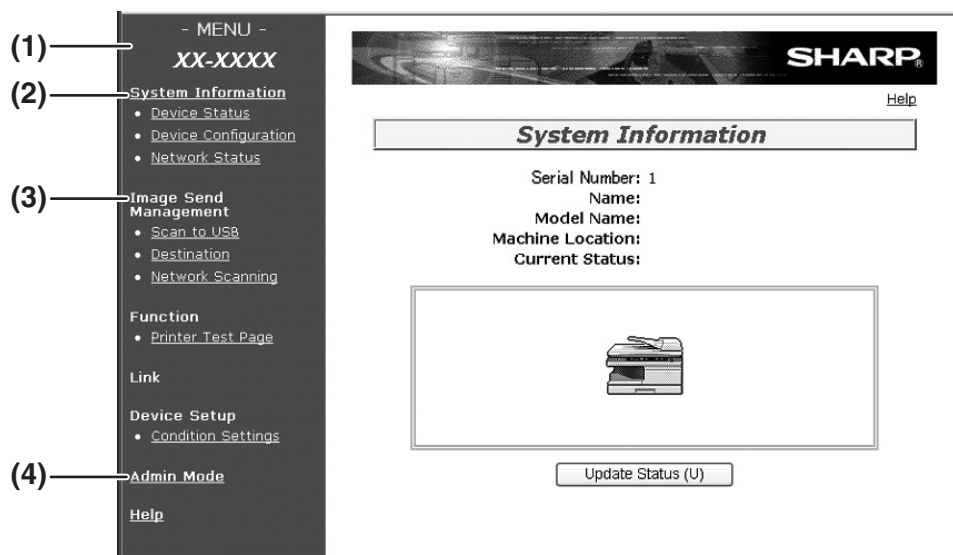
### 4 Close the Web page.



When you have finished using the Web page, click the  (close) button in the top right corner of the page.

# ABOUT THE WEB PAGE (FOR USERS)

When you successfully connect to the Web server in the machine, the following page will appear in your browser. A menu frame appears on the left side of the page. When you click an item in the menu, a screen appears in the right frame that allows you to establish settings for that item. For detailed explanations of the procedures for configuring settings, click [Help] in the menu frame.



## (1) Menu frame

The various settings appear in this frame. Click a menu item to configure the corresponding setting.

## (2) System Information

This shows the model name and current status of the machine.

- **Device Status**  
This shows information on the machine's paper trays and output trays, toner and other supplies, and the total sheet usage count. Out of paper and other warnings appear in red.
- **Device Configuration**  
Shows what options are installed.
- **Network Status**  
Shows general information as well as the status of TCP/IP.

## (3) Image Send Management

This is the base screen for storing, editing, and deleting destination information.

- **Scan to USB**  
Store scanning settings for Scan to USB.
- **Destination ([p.55](#))**  
Store destinations for Scan to FTP, Scan to FTP (Hyperlink), Scan to Desktop, and Scan to E-mail. You can also edit or delete previously stored destination information.
- **Network Scanning**  
This section explains how to edit the scan mode and custom indexes.
  - **Scan Mode**  
Scanning settings appropriate for the use can be stored.  
["STORING SCANNING SETTINGS - Network Scanning"](#) (p.54)
  - **Custom Index**  
This enables to change custom index names. Click the [Submit] button to store the entered information as index names.  
The custom index consists of six indexes. A 6-character index name can be stored for each index, allowing destinations to be grouped.

## (4) Admin Mode

Click here to open the administrator Web page and enter the administrator user name and password.

["PROTECTING INFORMATION PROGRAMMED IN THE WEB PAGE \(\[Passwords\]\)"](#) (p.63)

["ABOUT THE WEB PAGE \(FOR THE ADMINISTRATOR\)"](#) (p.60)

## STORING SCANNING SETTINGS - Scan to USB

Sets of scan settings (colour mode, resolution, file type, etc.) can be stored for use in various scanning applications. Each set of settings is called a "Scan Mode". When storing a destination, you can select one of the stored scanned modes. The settings of the selected scan mode will be used when you scan an image and send it to that destination (p.55 to 58) including Scan to USB.

### 1 Click "Scan to USB" in the menu frame of the Web page.



### 2 Select the desired scanning settings.

Refer to the following table for information on each setting.

### 3 When you have finished selecting the settings, click "Submit".

The selected settings are stored.

## Scan Mode settings

Item	Description	Default setting
Colour Mode	Select Full Colour, Grayscale, or Mono 2 gradation for the colour mode.	Full Colour
Resolution	Select the resolution.	150 dpi
Void Area	Select "On" to not scan the 4 mm around the edges of the image and instead attach a white border.	Off
Light Source	When "Mono 2 gradation" or "Grayscale" is selected for "Colour Mode", select "Red", "Green", or "Blue" for the light source.	Green
File Type	Select "PDF", "JPG" or "TIFF" for the file type of the scanned image.	PDF
Compression Mode	Select "None", "MH (G3)", or "MMR (G4)" for the compression mode of the scanned image.	None
Pages Per File	Select the number of pages per image file.	ALL



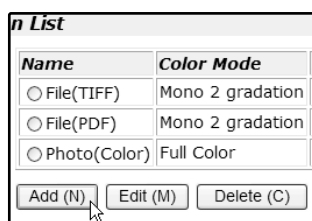
- For normal text originals, a sufficiently legible image is produced when the colour mode is set to "Mono 2 gradation" and the resolution is 200 dpi or 300 dpi. The 600 dpi setting should only be used in cases where high-clarity image reproduction is required, such as a photograph or an illustration. Note that a high resolution setting will result in a larger file size, and transmission may not be successful if there is insufficient memory or disk capacity in the server to which the image is sent (or if the administrator of the server has restricted the file size). If transmission is not successful, you can try such measures as reducing the number of scanned pages in the file or reducing the scan size setting for the original.
- To open the scanned image without using the software program in the CD-ROM that accompanies the machine, the recipient must have a viewer program that can open the image format (file type) that was selected as explained above.
- The factory default setting for the image format is PDF. If the recipient cannot open the image, try sending the image in a different format.
- If the number of scanned originals is not divisible by the number set in "Pages Per File", the last file will have less pages.
- The scan settings stored in a scan mode cannot be edited or deleted if the scan mode has been selected for a destination.

## STORING SCANNING SETTINGS - Network Scanning

- 1** Click "Network Scanning" in the menu frame of the Web page.



- 2** Click "Add" below the scan list.



If you need to change the settings in a previously stored scan mode, select the scan mode and click "Edit". To delete a scan mode, select the scan mode and click "Delete".

- 3** Select the desired scanning settings.  
Refer to the following table for information on each setting.

- 4** When you have finished selecting the settings, click "Submit".

The selected settings are stored.

### Scan Mode settings

Item	Description	Default setting
Name	Enter a name for the scan mode (up to 32 characters).	—
Colour Mode	Select Full Colour, Grayscale, or Mono 2 gradation for the colour mode.	Full Colour
Resolution	Select the resolution.	150 dpi
Void Area	Select "On" to not scan the 4 mm around the edges of the image and instead attach a white border.	Off
Light Source	When "Mono 2 gradation" is selected for "Colour Mode", select "Red", "Green", or "Blue" for the light source.	Green
File Type	Select "PDF", "JPG" or "TIFF" for the file type of the scanned image.	PDF
Compression Mode	Select "None", "MH (G3)", or "MMR (G4)" for the compression mode of the scanned image.	None
Pages Per File	Select the number of pages per image file.	ALL
Default Scan Mode	If you wish to use this scan mode as the default scan mode when storing destinations, select the "Default Scan Mode" checkbox. The "Default Scan Mode" is also used for Scan to E-mail when the e-mail address is directly entered or selected from an LDAP server.	Not selected

## STORING DESTINATIONS

To store scanning destinations, click [Destination] in the Web page menu frame. This screen can also be used to edit or delete stored destinations. ([p.59](#))

A total of 200 destinations\* can be stored, including E-mail, FTP, Desktop, and Group destinations.

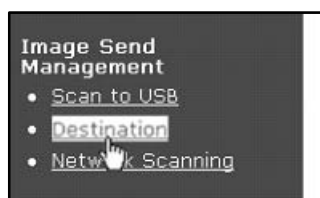
\* Multiple e-mail addresses can be stored as a group (up to 100). Note that this may reduce the maximum number of destinations (normally 200) that can be stored.



E-mail: See below  
 FTP: See page [56](#).  
 Desktop: See page [57](#).  
 Group (E-mail): See page [58](#).

### Storing destinations for Scan to E-mail

**1** Click [Destination] in the menu frame of the Web page.



**2** Click [E-mail].



**3** Enter the destination information.

For each setting, see the following table.

**4** When you have finished entering the information, click [Submit].

The entries will be stored.



To perform Scan to E-mail, the SMTP server settings must first be established. ([p.62](#))

### E-mail destination information

Item	Description
Name (Required)	Enter the name of the destination (up to 36 characters).
Initial (Optional)	Enter initial text for the destination (maximum of 10 characters). When the destination list is displayed in the destination control screen, the initial text is used to group the destinations.
Custom Index	Names can be assigned to the custom indexes as desired ( <a href="#">p.52</a> ), allowing convenient grouping of destinations. Select a custom index for the destination to be stored.
E-mail Address (Required)	Enter the e-mail address of the destination (up to 64 characters). If an LDAP server is being used, you can click the [Global Address Search] button to search for an address on the LDAP server.
Scan Mode	Select the name of the scan mode that you wish to use for the destination. The scan mode must be previously stored ( <a href="#">p.54</a> ).



## Storing destinations for Scan to FTP

- 1 Click [Destination] in the menu frame of the Web page.



- 2 Click [FTP].



- 3 Enter the destination information.

For the settings, see the following table.

- 4 When you have completed all the entries, click [Submit].

The entries will be stored.



- If you select the "Enable Hyperlink to FTP server to be e-mailed" checkbox and select a previously stored recipient ([p.55](#)) from "E-mail Destination", an e-mail will be sent to the recipient informing them of the file format and location of the scanned image data (Scan to FTP (Hyperlink)). A hyperlink to the file server to which the scanned image data was sent appears in the e-mail, and the recipient can click the hyperlink to go directly to the location where the image data is stored.
- Use "Scan Mode" to select a set of previously stored scanning settings (see "[STORING SCANNING SETTINGS - Network Scanning](#)" (p.54)). The list shows the names of the stored scan modes.

## FTP destination information

Item	Description
Name (Required)	Enter the name of the destination (up to 36 characters).
Initial (Optional)	Enter initial text for the destination (maximum of 10 characters). When the destination list is displayed in the destination control screen, the initial text is used to group the destinations.
Custom Index	Names can be assigned to the custom indexes as desired ( <a href="#">p.52</a> ), allowing convenient grouping of destinations. Select a custom index for the destination to be stored.
Hostname or IP Address (required)*1	Enter the IP address or host name of the FTP server (maximum of 127 characters).
User Name (Optional)	Enter the login user name for the FTP server (maximum of 32 characters).
Password (Optional)	Enter the login password for the FTP server (maximum of 32 characters).
Directory (Optional)	If you wish to specify a destination directory on the FTP server, enter the directory (maximum of 200 characters).
Enable Hyperlink to FTP server to be e-mailed (Checkbox)*2	When you send a scanned file to an FTP server, you can have a transmission notification automatically sent to the file recipient by e-mail. To have transmission notifications sent, select the checkbox. The FTP server name will appear in the transmission notification as a hyperlink.
E-mail Destination	Select the recipient that you wish to notify of the file transmission to the FTP server. To select a recipient here, the recipient's e-mail address must have been previously stored. ( <a href="#">p.55</a> )
Scan Mode	Select the name of the scan mode that you wish to use for the destination. The scan mode must be previously stored ( <a href="#">p.54</a> ).

\*1 If you entered a host name in "Hostname or IP Address", you will need to enter the DNS server settings. ([p.62](#))

\*2 To perform Scan to FTP (Hyperlink), you must also enter the settings for the e-mail server.



## Storing destinations for Scan to Desktop

The destination for Scan to Desktop is stored by the Sharp Network Scanner Tool Setup Wizard when "Network Scanner Tool" is installed in your computer. For this reason, there is no need to store the Scan to Desktop destination in the Web page. (The Network Scanner Tool is on the "Sharpdesk" CD-ROM that accompanies the Network Expansion Kit.)

For information on Scan to Desktop system requirements, installing the Network Scanner Tool, and storing the destination, see the "[SHARPDESK CD-ROM \(for Windows\)](#)" (p.73).

Normally your computer is stored as the destination by the method indicated above.

The following page for storing Scan to Desktop destination information appears when [Destination] is selected in the menu frame, followed by [Desktop]. This page is used mainly by the system administrator in the following circumstance.

- When another machine that also has the network expansion kit is added to your network and you wish to send an image scanned on the new machine to a destination stored on the existing machine.

See "[Editing and deleting programmed transmission destinations](#)" (p.59) to select the Scan to Desktop destination information that you wish to use on the new machine and enter the displayed information in this screen in the new machine. (When you have completed all entries, click [Submit].)

If there are several destinations that you wish to use on the new machine, repeat this procedure as needed.

If the information entered here differs from the information entered on the host computer, transmission/reception will not be possible.

For the settings, see the following table.

## Scan to Desktop destination information

Item	Description
Name (Required)	Enter the name of the destination (up to 36 characters).
Initial (Optional)	Enter initial text for the destination (maximum of 10 characters). When the destination list is displayed in the destination control screen, the initial text is used to group the destinations.
Custom Index	Names can be assigned to the custom indexes as desired ( <a href="#">p.52</a> ), allowing convenient grouping of destinations. Select a custom index for the destination to be stored.
Hostname or IP Address (Required)*	Enter the IP address or host name of the FTP server (maximum of 127 characters).
Port Number (Required)	Enter a port number from 0 to 65535 for the desktop network scanner tool.
Process Directory (Optional)	Enter the destination directory name for the file (maximum of 200 characters). The file will be processed in this directory after it is received.
User Name (Optional)	Enter the login user name for the network scanner tool (maximum of 32 characters).
Password (Optional)	Enter the login password for the network scanner tool (maximum of 32 characters).
Scan Mode	Select the name of the scan mode that you wish to use for the destination. The scan mode must be previously stored ( <a href="#">p.54</a> ).

\* If you entered a host name in "Hostname or IP Address", you will need to enter the DNS server settings. ([p.62](#))

## Storing Groups (Scan to E-mail)

You can send a scanned image to multiple e-mail destinations in a single Scan to E-mail operation. If you frequently transmit to a fixed group of destinations, you can store the destinations as a group.

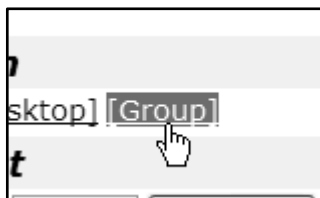


Up to 100 destinations can be stored in one group.

### 1 Click [Destination] in the menu frame of the Web page.



### 2 Click [Group].



### 3 Enter the destination information.

For the settings, see the following table.

### 4 When you have completed all of the entries, click "Submit".

The entries will be stored.

## Storing a group of destinations

Item	Description
Name (Required)	Enter the name of the destination (up to 36 characters).
Initial (Optional)	Enter initial text for the destinations (maximum of 10 characters). When the destination list is displayed in the destination control screen, the initial text is used to group the destinations.
Custom Index	Names can be assigned to the custom indexes as desired ( <a href="#">p.52</a> ), allowing convenient grouping of destinations. Select a custom index for the destination to be stored.
Address(es) (Required)	Select the address of each destination from the "E-mail" list box. Programmed e-mail destinations appear in each of the destination lists. To select multiple destinations, click each address while holding down the [Ctrl] key on the keyboard. If you need to cancel an address that has been selected, click the address again while holding down the [Ctrl] key. If an LDAP server is being used, you can click the [Global Address Search] button to search for an address on the LDAP server. Multiple e-mail addresses can be entered. Separate the e-mail addresses with a comma (,), semi-colon (;), space ( ), or colon (:).
Scan Mode	Select the name of the scan mode that you wish to use for the destination. The scan mode must be previously stored ( <a href="#">p.54</a> ).

## Editing and deleting programmed transmission destinations

To edit or delete programmed destinations, click [Destination] in the menu frame of the Web page.

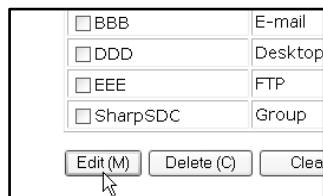
### 1 Click [Destination] in the menu frame of the Web page.



### 2 In the Destinations List, click the checkbox of the destination that you want to edit or delete.



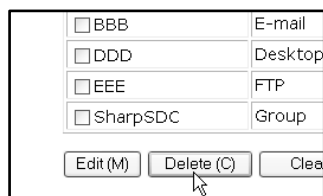
### 3 To edit the selected destination, click [Edit] at the bottom of the Destinations List.



The programming screen of the destination selected in step 2 appears. Edit the information in the same way as you initially stored it.

When finished, be sure to click [Submit] to save your changes.

### To delete the selected destination, click [Delete] at the bottom of the Destinations List.



A message appears asking you to confirm the deletion. Click [Yes] to delete.



If you attempt to delete a programmed destination in the following situations, a warning message will appear and deletion will not be possible.

- The destination is included in a group.

If the destination is being used for a current transmission, cancel the transmission or wait until it is completed and then delete the destination. If the destination is included in a group, delete the destination from the group and then delete the destination.

## Printing lists of programmed destinations

You can print lists showing the destinations that have been programmed.

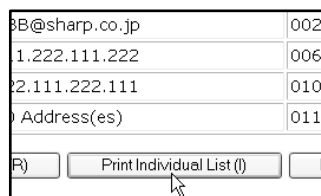
The following lists can be printed.

- Print individual list: Shows the information programmed in e-mail, FTP, desktop, and group destinations.
- Print group list: Shows only the information programmed in group (e-mail) destinations.

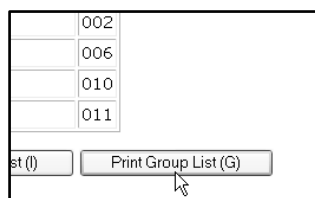
### 1 Click [Destination] in the menu frame of the Web page.



### 2 To print the individual list, click [Print Individual List] at the bottom of the destinations list.



### 3 To print the group list, click [Print Group List] at the bottom of the destinations list.

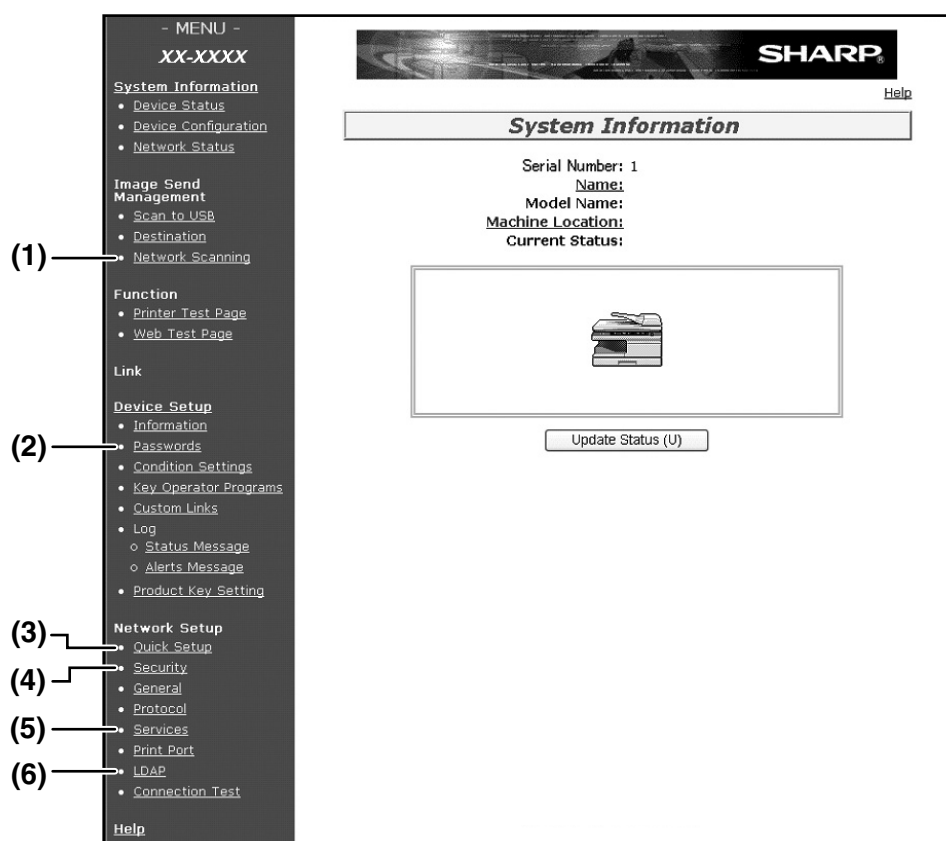


# ABOUT THE WEB PAGE (FOR THE ADMINISTRATOR)

In addition to the menu that appear in the user Web page, the Web page for the administrator also shows menus that can only be established by the administrator.

A menu frame appears on the left side of the page. When you click an item in the menu, a screen appears in the right frame that allows you to configure settings for that item.

Settings that can only be configured by the administrator are explained here.



## (1) Network Scanning ([p.61](#))

This lets you select transmission methods for the network scanner function and configure settings for Scan to E-mail.

## (2) Passwords ([p.63](#))

The administrator can establish passwords to protect the Web site. Enter the password that you wish to establish and click the [Submit] button.

A password can be set for the administrator and users.

## (3) Quick Setup ([p.62](#))

This is used to configure basic settings for the SMTP, DNS, and LDAP servers.

## (4) Security

Port numbers can be changed or disabled for security purposes.

## (5) Services ([p.62](#))

This is used to configure advanced SMTP and DNS server settings as needed for each transmission method.

## (6) LDAP ([p.62](#))

This is used to configure advanced settings for global address searches.

# BASIC SETTINGS FOR NETWORK SCANNING

Click [Network Scanning] in the menu frame and configure the required settings. A password is required to access this screen. (p.63) These settings should only be configured by the network administrator. For explanations of each of the items, click [Help] in the menu frame.

## 1 Click [Network Scanning] in the menu frame.



The Network Scanning setup page appears.

## 2 Select the transmission methods that you wish to use.

Select the scanner delivery methods that you want to use. In the "Enable Scanner Delivery to:" field, click the checkbox next to each method that you want to use so that a checkmark appears in the checkbox.

All transmission methods are initially selected (factory default settings).

 A screenshot of the 'Network Scanning' setup page. It has tabs for '[Scan Mode]', '[Setup]', and '[Custom Index]'. Under 'Enable Scanner Delivery to:', there are three checked checkboxes: 'Scan to ad-hoc E-mail', 'Scan to pre-defined E-mail', and 'Scan to FTP & Desktop'. Under 'Advanced Setup', there is an unchecked checkbox for 'Bcc: e-mail address for scan to e-mail jobs' with an adjacent text field. Under 'Maximum Size of E-mail Attachments', there is a dropdown for 'Upper Limit' set to '1 MB' and a checked checkbox for 'Unlimited'. Under 'File Naming', there are four checkboxes: 'Destination Name' (checked), 'Date & Time' (checked), 'Session Page Counter' (unchecked), and 'Unique Identifier' (unchecked). Under 'Default Subject', there is a text field containing 'Scanned image fromXX-XXXX' and a 'Submit(S)' button.

## 3 Configure the Advanced Setup settings.

Select advanced functions that can be used for Scan to E-mail.

If you wish to BCC a copy of a Scan to E-mail transmission to an e-mail address, select the [Bcc] checkbox and enter the e-mail address.

## 4 Set a limit for the size of image files.

To prevent the transmission of excessively large files by Scan to E-mail, you can set a size limit. If the image file created from the scanned image is larger than the set limit, the image file is discarded. The limit can be set from 1 MB to 10 MB in increments of 1 MB.

The factory default setting is [Unlimited]. If you wish to set a limit, remove the checkmark from the [Unlimited] checkbox and enter the desired limit.

## 5 Select the method for assigning a file name to a scanned image.

Select the method for assigning a file name to a scanned image. In "File Naming", click the items that you wish to use in the file name. "Destination Name" and "Date & Time" are initially selected.



If you are going to send images to the same recipient more than once, we recommend that you also select "Session Page Counter" or "Unique Identifier" to prevent sending multiple files with the same name, which would result in each successive file overwriting the previous file.

## 6 Selecting an e-mail subject (only used for Scan to E-mail).

The setting is used to enter the subject that appears in the recipient's e-mail program when you perform Scan to E-mail. (This setting is not necessary if you will not be using Scan to E-mail.) Enter a subject (maximum of 80 characters). If nothing is entered, "Scanned image from <Device Name>\*" will appear.

\* The name that appears in Device Name is the name stored in "Name" in the screen that appears when you click [System Information] in the menu frame. If a name has not been stored, the product name will appear.

## 7 Click [Submit].

 A screenshot of the 'Network Scanning' setup page, focusing on the 'Default Subject' field and the 'Submit(S)' button. The 'Session Page Counter' checkbox is unchecked. The 'Default Subject' field contains 'Scanned image from XX-XXXX'. A mouse cursor is pointing at the 'Submit(S)' button.

After entering the settings, be sure to click [Submit] to store them.

## VARIOUS SERVER SETTINGS

The procedures for using [Quick Setup] are explained here. [Quick Setup] is used to quickly configure only the required settings for "SMTP", "DNS", and "LDAP" servers. These settings are normally configured first.

**SMTP server:** SMTP is used to transmit e-mail that is sent using Scan to E-mail or Scan to FTP (Hyperlink). To use these transmission methods, your SMTP server settings must be configured.

**DNS server:** If you entered a host name in "Primary SMTP Server" or "Secondary SMTP Server" of "SMTP", you must also configure your DNS server settings.

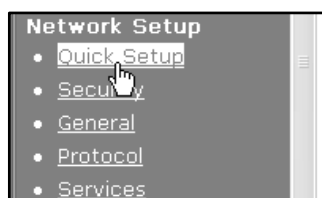
You will also need to configure your DNS server settings if host names will be entered in "Hostname or IP Address" when storing destinations for Scan to FTP (Scan to FTP (Hyperlink)) or Scan to Desktop.

**LDAP server:** If mail addresses are managed on your network by an LDAP server, the e-mail addresses stored in the LDAP server can be used for Scan to E-mail.

To allow the machine to use the e-mail addresses in the LDAP server, the LDAP server settings must be configured in the Web page.

### Configuring SMTP, DNS and LDAP server settings.

#### 1 Click [Quick Setup] in the menu frame.



#### 3 When you have completed all of the entries, click [Submit].

The entries will be stored.

#### 2 Enter the required information in "SMTP", "DNS" and "LDAP".

For explanations of each setting, click [Help] in the upper right-hand corner of the window.



If you need to configure advanced settings for the SMTP, DNS, and LDAP servers, follow the procedures below.

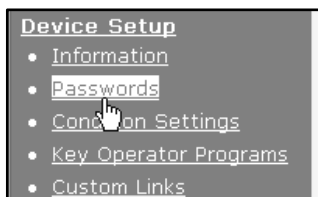
- Configuring SMTP and DNS server settings  
Click [Services] in the menu frame to display the services setup screen. Select the desired server and then configure the required parameters for that server.
- Configuring LDAP server settings  
Click [LDAP] in the menu frame to display the LDAP setup screen. Configure the required parameters.

# PROTECTING INFORMATION PROGRAMMED IN THE WEB PAGE ([Passwords])

The settings and information programmed in the Web page can be protected by establishing passwords (click [Passwords] in the menu frame). The administrator must change the factory default password to a new password. The administrator should also take care to remember the new password. From now on, the new password must be entered each time you wish to configure settings in the Web pages.

A password can be set for the administrator and users.

## 1 Click [Passwords] in the menu frame.



## 2 Enter the current password in "Admin Password".

When establishing a password for the first time, enter "Sharp" in "Admin Password".



**Be sure to enter "S" in upper case and "harp" in lower case (passwords are case sensitive).**

## 3 Enter passwords in "User Password" and "Admin Password".

- A maximum of 7 characters and/or numbers can be entered for each password (passwords are case sensitive).
- Be sure to enter the same password in "Confirm Password" as you did in "New Password".

## 4 When you have completed all entries, click [Submit].

The entered password is stored.

**After setting the password, turn the machine power off and then back on.**

When prompted to enter the password, a user should enter "user" in "User Name" and an administrator should enter "admin" in "User Name". The appropriate password should be entered in "Password". For more information, click [Help] in the upper right-hand corner of the window.



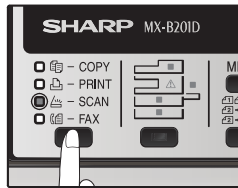
# 9

# USING THE NETWORK SCANNER FUNCTION

## BASIC TRANSMISSION PROCEDURE

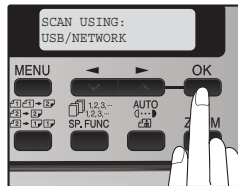
- 1 Press the [MODE SELECT] key to select scanner mode.

The "SCAN" indicator lights up to indicate that scanner mode is selected.



- 2 Make sure that the "SCAN USING: USB/NETWORK" is shown on the display. Then press [OK] to enter Scan to USB and Network Scan mode.

(The initial display will be "SCAN USING: SCAN TO USB".)

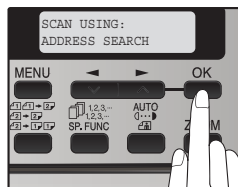


- 3 Place the original in the document feeder tray or on the document glass.

For information on how to place the original, see ["IMAGE ORIENTATION AND STANDARD ORIGINAL LOADING ORIENTATION"](#) (p.68).

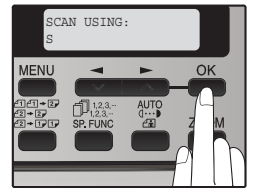
- 4 Select "ADDRESS SEARCH" and then press the [OK] key.

The selections change as follows each time the [▶] key (▶) is pressed:  
 "INPUT ADDRESS"  
 → "GLOBAL ADDRESS" → "ADDRESS SEARCH". If you continue to press the [▶] key (▶), the stored destinations will appear in alphabetical order based on the initial stored for each destination.



- 5 Enter search characters and press the [OK] key.

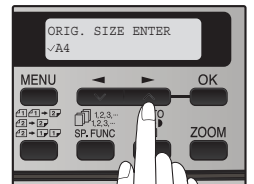
You will search the names that were entered for the destinations. Destinations matching the search characters will appear. To enter characters, see ["HOW TO ENTER CHARACTERS"](#) (p.68).



- 6 Press the [◀] key (◀) or [▶] key (▶) to select the destination and then press the [OK] key.

- 7 Press the [◀] key (◀) or [▶] key (▶) to select the original size and then press the [OK] key.

The original size changes as follows each time the [◀] key (◀) or [▶] key (▶) is pressed:  
 "A4" → "B5" → "A5" →  
 "8.5x14" → "8.5x13" →  
 "8.5x11" → "8.5x5.5".





## 8 Press the [OK] key and then [◀] key (◀) or [▶] key (▶) to select the colour mode (COLOUR, GRAY and B/W) and exposure level.

(When B/W mode is selected.)

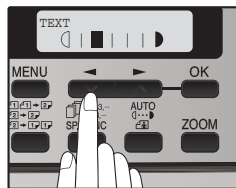
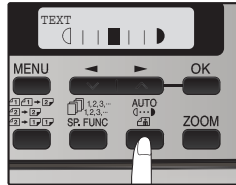
Press the [EXPOSURE (AUTO)] key to select the original type.

The original image type changes as follows each time the [EXPOSURE (AUTO)] key is pressed:

"AUTO" (AUTO) → "TEXT" (TEXT) → "PHOTO" (PHOTO).

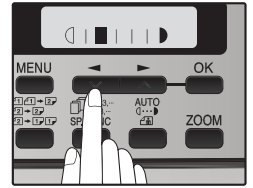
If needed, adjust the exposure level for TEXT (TEXT) or PHOTO (PHOTO).

For a darker image, press the [▶] key (▶). For a lighter image, press the [◀] key (◀).



(When COLOUR or GRAY mode is selected.)

Adjust the exposure level. For a darker image, press the [▶] key (▶). For a lighter image, press the [◀] key (◀).



## 9 Press the [START] key (START) to begin scanning.



- The [CLEAR] key (C) can be pressed during a scanning operation to return to the previous step of the operation. To cancel a scanning operation and return to the initial state of scanner mode, press the [CLEAR ALL] key (CA).
- The network scanner function cannot scan both sides of an original placed in the RSPF.
- The scan settings stored in a scan mode cannot be edited if the scan mode has been selected for a destination. You can either store the desired settings in a new scan mode as explained in "[STORING SCANNING SETTINGS - Network Scanning](#)" (p.54) and then edit the destination settings, or you can cancel the selection of the scan mode for the destination and then edit the scan mode settings.



- Before performing Scan to E-mail, read "[IMPORTANT POINTS WHEN USING SCAN TO E-MAIL](#)" (p.72). Take care that the image file is not too large.
- A limit for the size of image files that can be sent using Scan to E-mail can be set in "Maximum Size of E-mail Attachments" ([p.61](#)) of the Web page.

# TRANSMISSION METHODS FOR SCAN TO E-MAIL

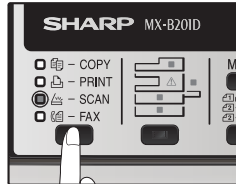
Pour utiliser un serveur LDAP, les paramètres de

The e-mail address for a Scan to E-mail transmission can be entered manually or selected from e-mail addresses stored on an LDAP server.

## Sending an image by entering an e-mail address manually

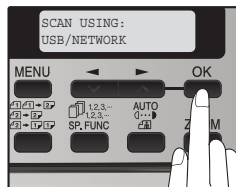
- 1 Press the [MODE SELECT] key to select scanner mode.

The "SCAN" indicator lights up to indicate that scanner mode is selected.



- 2 Make sure that the "SCAN USING: USB/NETWORK" is shown on the display. Then press [OK] to enter Scan to USB and Network Scan mode.

(The initial display will be "SCAN USING: SCAN TO USB".)

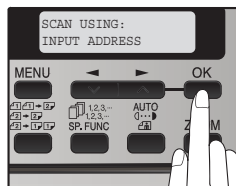


- 3 Place the original in the document feeder tray or on the document glass.

For information on how to place the original, see ["IMAGE ORIENTATION AND STANDARD ORIGINAL LOADING ORIENTATION"](#) (p.68).

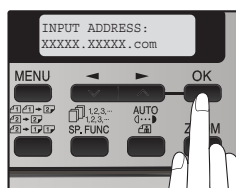
- 4 Select "INPUT ADDRESS" using the [◀] key (◀) or [▶] key (▶) and then press the [OK] key.

If "INPUT ADDRESS" does not appear, make sure that "Scan to ad-hoc E-mail" is enabled in the Web page ([p.61](#)).



- 5 Enter the destination e-mail address and press the [OK] key.

To enter characters, see ["HOW TO ENTER CHARACTERS"](#) (p.68)



- 6 Press the [◀] key (◀) or [▶] key (▶) to select the original size and then press the [OK] key.

The original size changes as follows each time the [◀] key (◀) or [▶] key (▶) is pressed: "A4" → "B5" → "A5" → 8.5x14" → "8.5x13" → "8.5x11" → "8.5x5.5".

- 7 Press the [OK] key and then [◀] key (◀) or [▶] key (▶) to select the colour mode (COLOUR, GRAY and B/W) and exposure level.

(For the setting, see page [65](#).)

- 8 Press the [START] key (⏻) to begin scanning.

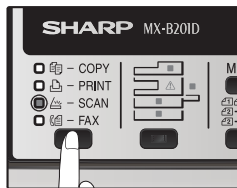


The original is scanned using the settings of the scan mode that has the "Default Scan Mode" checkbox selected.

## Sending an image by entering an e-mail address in an LDAP server

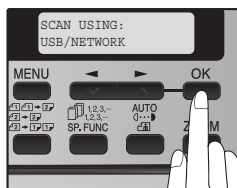
### 1 Press the [MODE SELECT] key to select scanner mode.

The "SCAN" indicator lights up to indicate that scanner mode is selected.



### 2 Make sure that the "SCAN USING: USB/NETWORK" is shown on the display. Then press [OK] to enter Scan to USB and Network Scan mode.

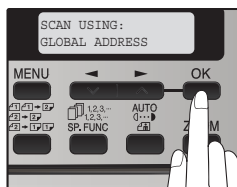
(The initial display will be "SCAN USING: SCAN TO USB".)



### 3 Place the original in the document feeder tray or on the document glass.

For information on how to place the original, see ["IMAGE ORIENTATION AND STANDARD ORIGINAL LOADING ORIENTATION"](#) (p.68).

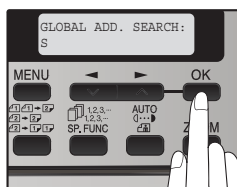
### 4 Select "GLOBAL ADDRESS" using the [◀] key (◀) or [▶] key (▶) and then press the [OK] key.



### 5 Enter search characters and press the [OK] key.

Destinations matching the search characters will appear.

To enter characters, see ["HOW TO ENTER CHARACTERS"](#) (p.68)



### 6 Press the [◀] key (◀) or [▶] key (▶) to select the original size and then press the [OK] key.

The original size changes as follows each time the [◀] key (◀) or [▶] key (▶) is pressed: "A4" → "B5" → "A5" → "8.5x14" → "8.5x13" → "8.5x11" → "8.5x5.5".

### 7 Press the [OK] key and then [◀] key (◀) or [▶] key (▶) to select the colour mode (COLOUR, GRAY and B/W) and exposure level.

(For the setting, see page 65.)

### 8 Press the [START] key (●) to begin scanning.



The original is scanned using the settings of the scan mode that has the "Default Scan Mode" checkbox selected.

# IMAGE ORIENTATION AND STANDARD ORIGINAL LOADING ORIENTATION

When using the document glass, the original should be placed face down. Centre the original vertically on the document glass with the top edge at the left edge of the glass.

When using the RSPF, the original should be placed face up in the middle of the document feeder tray, with the top of the original to the right. (The network scanner function cannot scan both sides of an original placed in the RSPF.)

Document glass	RSPF	Scanning result

Long horizontal originals (from 215.9 mm (8-1/2") to 355.6 mm (14")) can only be placed as shown below. For this reason, the scanned image will be rotated 90° when viewed on a computer.

Document glass	RSPF	Scanning result

# HOW TO ENTER CHARACTERS

You can enter letters with the numeric keys. Letters are marked above each of numeric keys [2] through [9]. To enter a letter, press the appropriate key repeatedly until the desired letter appears (the number of the key appears first, followed by letters in the order marked above the key). The keys used for entering characters are shown below.

The following characters can be entered with the numeric keys:

	ABC	DEF
1	2	3
GHI	JKL	MNO
4	5	6
PQRS	TUV	WXYZ
7	8	9
	@_-	
ACC. #-C	*	0
		#

Characters that can be entered		
key	When entering e-mail address	When entering search characters
1	1	1 Space
2	a b c 2 A B C	A B C 2 a b c
3	d e f 3 D E F	D E F 3 d e f
4	g h i 4 G H I	G H I 4 g h i
5	j k l 5 J K L	J K L 5 j k l
6	m n o 6 M N O	M N O 6 m n o
7	p q r s 7 P Q R S	P Q R S 7 p q r s
8	t u v 8 T U V	T U V 8 t u v
9	w x y z 9 W X Y Z	W X Y Z 9 w x y z
*	_-.@	*} [/?>=:;,+)'(&%\$"/_-.@#
0	0	0
#	@_-_	#@_-_/"\$%&'()+,;=>?[]{}*

- To enter two characters in succession which require using the same key, press the [▶] key ( ) once after entering the first character and then enter the second character.
- If you enter an incorrect character or number, follow these steps to correct the mistake.
  1. Press the [◀] key ( ) or [▶] key ( ) to move the cursor to the character immediately following the incorrect character.
  2. Press the [CLEAR] key ( ).  
The character in front of the cursor is deleted.
  3. Enter the correct character.  
The character is inserted in front of the cursor.

---

---

## TROUBLESHOOTING

If a problem or question arises, try to solve the situation using the following information before contacting your authorised SHARP dealer.

Image transmission problems are explained here. For image scanning problems, see the operation guide for the machine.

### CHECK THE CONNECTIONS

#### ■ Is the LAN cable disconnected?

Make sure that the LAN cable is firmly inserted in the connectors on the network expansion kit and your computer. For information on connecting the LAN cable, see software setup guide for network printer.

#### ■ Is the machine configured for use on the same network as the computer?

The machine cannot be used if it is not connected to the same network as the computer, or if it is not configured for use on the network.

For more information, consult your network administrator.

### Points to check in Windows

#### ■ Are you using a port that was created with Standard TCP/IP Port?

If you are using a port created using Standard TCP/IP Port in Windows environment, printing may not take place correctly if "SNMP Status Enabled" is selected in the port settings of the printer driver. Open the printer driver properties and click the "Configure Port" button on the "Ports" tab. In the window that appears, make sure the "SNMP Status Enabled" checkbox is not selected ☐.

Problem	Cause and solution
The scanned image is clipped.	<p><b>The selected "Scan Size" setting is smaller than the actual original size.</b></p> <p>→ Set the scan size to the actual original size (<a href="#">p.64</a>) and make sure that the original is placed in the correct orientation (<a href="#">p.68</a>).</p> <p>If you intentionally selected a size setting smaller than the actual original size, take into consideration the part of the original that you wish to scan when placing the original. For example, if the actual size is A4 (8-1/2" x 11") and you selected B5 (5-1/2" x 8-1/2") for the size setting, place the original so that the part that you wish to scan is within the Invoice area at the left, centre of the glass.</p>
The received image data cannot be opened.	<p><b>The viewer program used by the recipient does not support the format of the received image data.</b></p> <p>→ Try selecting a different file type (TIFF / PDF / JPEG) and/or a different compression format (None, MH (G3), MMR (G4)) when sending the image data.</p> <p>Otherwise, have the recipient use Sharpdesk or a viewer program that supports the above combinations of file types and compression formats.</p>
When the same file name is used for two successive Scan to FTP transmissions, the second file is not sent.	The first file may still remain in the cache of the file server client. Disable use of the cache in the client software.
The recipient does not receive transmitted data.	<p><b>There is a mistake in the stored destination information or the wrong destination was selected.</b></p> <p>→ Make sure that the correct destination information is stored. If there is a mistake, correct it (<a href="#">p.59</a>).</p> <p>* If delivery by e-mail (Scan to E-mail) is unsuccessful, an error message such as "Undelivered Message" may be sent to the designated administrator's e-mail address. This information may help you determine the cause of the problem.</p>
The recipient does not receive data sent by e-mail (Scan to E-mail).	<p>Check the Web page to see if a limit has been set for the size of image files sent using Scan to E-mail (the factory default setting is "Unlimited"). A limit can be set from 1 MB to 10 MB. Consult the administrator of the Web page to select a suitable limit (<a href="#">p.61</a>).</p>
	<p>The amount of data that can be sent in one e-mail transmission is sometimes limited by the administrator of the mail server. Even if the amount of data sent is within the limit setting explained above, if it exceeds the limit set by the administrator of the mail server, the data will not be delivered to the recipient.</p> <p>Decrease the amount of data sent in the e-mail transmission (reduce the number of pages scanned). (Ask your mail server administrator what the data limit is for one e-mail transmission.)</p>
Transmission takes a long time.	When there is a large amount of image information, the data file is also large and transmission takes a long time.



**Pay attention to the following points when selecting scan settings to ensure that an image file is created that suits the purpose of transmission in terms of image quality and file size. Scan settings are configured in the Web page.**

- **Colour mode**

Select a colour mode that is appropriate for the use of the document to be scanned so that the file size will not be larger than necessary.

Scanning a document with the colour mode set to gray scale or black and white will yield a smaller file size than scanning in colour.

- **Resolution**

For normal text originals, a sufficiently legible image is produced when the colour mode is set to "Mono 2 gradation" and the resolution is 200 dpi or 300 dpi.

The 600 dpi setting should only be used in cases where high-clarity image reproduction is required, such as an original that includes photographs or illustrations. Note that a high-resolution setting will result in a larger file size and transmission may not be successful if there is insufficient disk capacity in the server to which the image is sent (or if the administrator of the server has restricted the file size). If transmission is not successful, you can try such measures as reducing the number of scanned pages in the file or reducing the scan size setting for the original.

## REMOVING THE SOFTWARE

In the event that you need to remove the printer driver or utilities, follow these steps:

### Windows

#### 1 Click the "start" button, and then click "Control Panel".

On Windows 2000, click the "Start" button, select "Settings", and then click "Control Panel".

#### 2 Click "Add or Remove Programs".

- On Windows Vista/7, click the "Uninstall a program".
- On Windows 2000, double-click the "Add/Remove Programs" icon.

#### 3 Select the driver or utility that you wish to remove from the list, and click the appropriate button to remove it.

For more information, refer to your operating manual or to the help files for your operating system.

#### 4 Restart your computer.

## DISPLAY MESSAGES

If a transmission error occurs when you send a scanned image, a message informing you of the error and an error code will appear in the operation panel on the machine.

Error Code	Solution	Page
CE-00 CE-01	Turn off the power and turn it back on. Consult with your network administrator to make sure that no problems exist on the network or in the server. If the error is not cleared after turning the power off and on, turn off the power and contact your dealer.	—
CE-02 CE-04	Server access denied. The scanned image was not sent because a connection to the server could not be established. Make sure that the SMTP server settings or FTP server settings in the Web page are correct. The procedure for configuring the SMTP server is explained in " <a href="#">VARIOUS SERVER SETTINGS</a> ", and the procedure for editing Scan to FTP destination information is explained in " <a href="#">Editing and deleting programmed transmission destinations</a> ".	<a href="#">59</a> , <a href="#">62</a>
CE-03	The scanned image was not sent because the server was busy or there was too much traffic. Wait briefly and then try again.	—
CE-05	The scanned image was not sent because the directory of the destination FTP server was not correct. Make sure that the correct FTP server information is configured in the Web page.	<a href="#">59</a>
CE-09	The size of the scanned image file exceeds the upper limit set in "Maximum Size of File" in the Web page. Reduce the number of original pages scanned into the file, or change the upper limit set in "Maximum Size of File".	<a href="#">61</a>
CE-12	The maximum number of destinations that can be searched has been exceeded. Increase the number of search characters to narrow the range of the LDAP search.	<a href="#">67</a>
MEMORY FULL	The memory became full during scanning. Scan less pages, lower the resolution, or change the colour mode so that the file size is smaller, and try scanning again. For the scan mode settings, see " <a href="#">STORING SCANNING SETTINGS - Network Scanning</a> ". (See Help in the Web page for explanations of each of the settings.)	<a href="#">54</a>

## IF YOUR E-MAIL IS RETURNED

If a Scan to E-mail is not successfully transmitted, an e-mail informing you of this fact is sent to the return address configured in the SMTP server. If this happens, read the e-mail and determine the cause of the error, and then repeat the transmission.



# IMPORTANT POINTS WHEN USING SCAN TO E-MAIL

Be very careful not to send image data files that are too large.

Your mail server's system administrator may have placed a limit on the amount of data that can be sent in one e-mail transmission. If this limit is exceeded, the e-mail will not be delivered to the recipient. Even if there is no limit and your e-mail is successfully delivered, a large data file may take a long time to be received and place a heavy burden on the recipient's network, depending on the recipient's network (Internet) connection environment.

If large image data files are repeatedly sent, the resulting burden on the network may slow down the speed of other, unrelated data transmissions and in some cases, may even cause the mail server or network to go down.

The images on the following page will produce the following file sizes when scanned as A4 size or 8-1/2" x 11" originals:

Resolution	File size of text original A when scanned	File size of photo original B when scanned	
	Mono 2 gradation	Grayscale	Full Colour
75 dpi	Approx. 10 KB	Approx. 125 KB	Approx. 140 KB
300 dpi	Approx. 34 KB	Approx. 1430 KB (Approx. 1.43 MB)	Approx. 1440 KB (Approx. 1.44 MB)

\* All sizes are for image files created in TIFF MMR (G4) format.

If multiple images are scanned, the file size will be approximately (Size of each image as indicated above) x (Number of images scanned).

Although the actual limitation depends on your network environment, a general guideline for the maximum file size for Scan to E-mail is 2000 KB (2 MB). In cases where you need to send multiple documents, try such measures as lowering the resolution mode.

## Original image samples

The original images shown below are samples to help you understand the above explanations. Note that these images are smaller than the actual originals (the actual originals are A4 size or 8-1/2" x 11").

Text original A

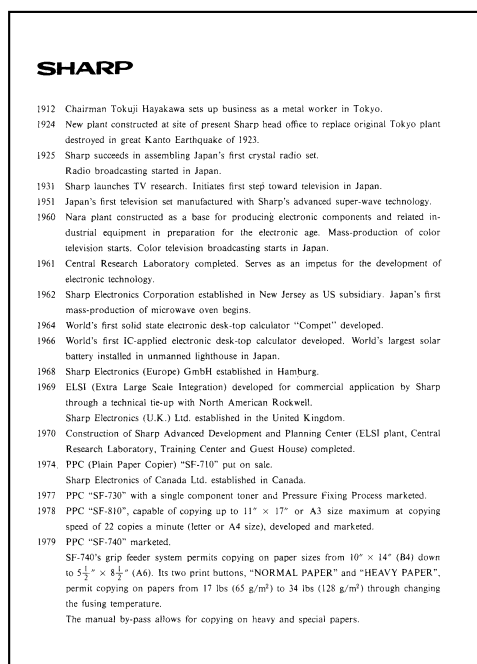


Photo original B





The CD-ROM contains the following software programs:

- **Sharpdesk\* (Desktop Document Management Software)**
- **Network Scanner Tool**
- **SHARP TWAIN AR/DM (Twain driver)**

\* Sharpdesk can only be installed on the number of computers indicated in "Sharpdesk Serial Numbers" on the cover of "Important Information". If you need to install Sharpdesk on additional computers, please purchase the optional license kit.

(If the version of the software on the CD-ROM in the license kit is different from the version of the software on the CD-ROM that accompanies the machine, it is recommended that you use the newest version of the software.)

---



---

## SOFTWARE PROGRAMS

For detailed information on each of the software programs, please refer to the user's guides on the CD-ROM. To view the manuals in PDF format, Adobe Reader of Adobe Systems Incorporated is required. If neither program is installed on your computer, the programs can be downloaded from the following URL:

<http://www.adobe.com/>

### SHARPDESK (Desktop Document Management Software)

Sharpdesk lets you manage a variety of electronic information such as scanned image data from a Digital Laser Copier/Printer or documents created using word processing or spreadsheet application software. Some of the important features of Sharpdesk are:

- Sharpdesk works with your scanner to let you read paper documents into your computer using a full-featured set of scanning controls and options.
- Sharpdesk makes editing of your images and documents quick and easy.
- A text image scanned into Sharpdesk can be converted into editable text for use with your favorite word processor. Sharpdesk uses an advanced Optical Character Recognition (OCR) engine that even preserves your document layouts.
- Distributing documents by e-mail or printing a hard copy is as easy as dragging a file onto an icon on the Sharpdesk OutputZone.
- Multiple files can be combined together into a single new file. After creating a combination file, the page order can be changed or new pages added.
- You can search for an image or text file using a single word, phrase, or list of words. You can also perform a detailed search by specifying the file type, modified data, or a keyword.
- A colour image scanned on the machine can be saved as a PDF file using a high compression ratio to reduce the file size. (To view a PDF file saved using a high compression ratio, the latest version of Adobe Reader is required.)

### NETWORK SCANNER TOOL

This is a utility that helps you use Scan to Desktop. It configures the necessary settings in the Digital Laser Copier/Printer and client computer to receive data. In addition, Network Scanner Tool will automatically start Sharpdesk upon receiving image data.

The scanned image received by your computer can automatically be:

- Saved in a folder.
- Passed to the application set in Network Scanner Tool.
- Sent as e-mail.
- Saved in Sharpdesk.

### SHARP TWAIN AR/DM

SHARP TWAIN AR/DM imports image data from a Twain interface into a Twain-compliant application. SHARP TWAIN AR/DM has the following features:

- A selected range of the image data can be imported.
- The image can be rotated when imported.

---

---

# USER'S GUIDES FOR SOFTWARE PROGRAMS

The Manual folder in the CD-ROM contains user's guides (in PDF format) for each of the software programs.

- **Sharpdesk Installation Guide**
- **Sharpdesk User's Guide**
- **Network Scanner Tool User's Guide**
- **SHARP TWAIN AR/DM User's Guide**

In addition to explaining how to use the programs, the user's guides also give detailed instructions for installing and setting up the programs. Be sure to read the user's guides before installing the programs.

---

---

# INSTALLING THE SOFTWARE PROGRAM

Note the following when installing the software program from the CD-ROM:

- Be sure to check the system requirements for installation of each of the software programs in the user's guides and on the Information screen during installation.
- The user's guides give detailed instructions for installing and setting up the programs. Be sure to read the user's guides before installing the programs. In particular, if you are going to use Network Scanner Tool, be sure to carefully read the instructions regarding network preparation and setup procedures before installing the program. The network administrator should verify that network preparation has been carried out correctly.
- If you are going to send an original scanned with the Digital Laser Copier/Printer to a computer (Scan to Desktop), Network Scanner Tool must be installed.
- If you perform a standard installation of Sharpdesk (select "Typical" in the Setup Type selection screen), Network Scanner Tool will be also be installed, alternatively you can also select "Custom" installation and install only Network Scanner Tool.
- If you intend to install SHARP TWAIN AR/DM, install Network Scanner Tool first. SHARP TWAIN AR/DM cannot be installed alone.
- The contents of the Information screens that appear during installation can also be found in the ReadMe files on the same CD-ROM. The ReadMe file for Sharpdesk is located in the root folder of the CD-ROM, and the ReadMe file for SHARP TWAIN AR/DM is located in the Twain folder.

## INSTALLING SHARPDESK AND NETWORK SCANNER TOOL

---


**1** Quit any software applications and/or resident programs that are running on your computer.

---

**2** Insert the CD-ROM into your CD-ROM drive.

- The Sharpdesk installation screen appears. Proceed to step 6.
- If the screen does not appear, proceed to step 3.

---

**3** Click the "start" button and then click "My Computer" (  ).

In Windows Vista/7, click the "Start" button and then click "Computer".

---

**4** Double click the CD-ROM icon (  ).

The Sharpdesk installer starts.

---

**5** Follow the instructions on the screen.

In Windows Vista/7, if a message screen appears asking you for confirmation, click "Allow".

---

**6** When the "Customer Information" window appears, enter the serial number that appears on the cover of the this manual, and click the "Next" button.

Follow the instructions on the screen.

- If you select "Typical" in the Setup Type selection screen, Network Scanner Tool will also be installed. If you only wish to install Network Scanner Tool, select "Custom" in the Setup Type selection screen and then check only Network Scanner Tool.
- If Eastman Software's "Imaging for Windows Professional Edition" has already been installed on your computer, Sharpdesk Imaging will not be installed.
- "Imaging for Windows Professional Edition" and Sharpdesk Imaging use common registry entries, and installing "Imaging for Windows Professional Edition" after Sharpdesk Imaging has been installed may result in abnormal operation. In this case, uninstall Sharpdesk and Sharpdesk Imaging, and then install "Imaging for Windows Professional Edition". After that, reinstall Sharpdesk.
- When Network Scanner Tool setup is finished, the "Search Setup Wizard" appears. Follow the on-screen instructions to create an index database. For detailed information, see the Sharpdesk Installation Guide and Sharpdesk User's Guide.  
\* Sharpdesk Imaging is a version of Eastman Software's Imaging for Windows Professional Edition that has been customised by the Sharp Corporation.


# INSTALLING SHARP TWAIN AR/DM

SHARP TWAIN AR/DM cannot be used in Windows Vista/7.

**1** Quit any software applications and/or resident programs that are running on your computer.

**2** Insert the CD-ROM into your CD-ROM drive.

If the Sharpdesk installation window appears, click "Cancel" to exit the setup procedure.

**3** Click the "start" button and then click "My Computer" ()

In Windows 2000, double click "My Computer".

**4** Click the CD-ROM icon () and select "Open" from the "File" menu.

**5** Double-click the "Twain" folder, and then double-click the "SETUP" icon ()

**6** Follow the instructions on the screen.

---

# UNINSTALLING THE SOFTWARE PROGRAM

To remove the software, follow the steps below.

- When Sharpdesk is uninstalled, Network Scanner Tool is also uninstalled. Note that if Network Scanner Tool is uninstalled, you will no longer be able to directly receive image data from the Digital Laser Copier/Printer.
- If a user-created file is saved in the Sharpdesk desktop folder, the Sharpdesk desktop folder will not be deleted when Sharpdesk is uninstalled.
- Removing SHARP TWAIN AR/DM will not delete the spooler folder which stores image data.

## UNINSTALLING THE SOFTWARE PROGRAM FROM THE CONTROL PANEL

**1** Click "Control Panel" in the "start" menu.

In Windows 2000, click "Start", "Settings", and then "Control Panel".

**2** Double click "Add or Remove Programs".

- In Windows 2000, double click "Add/Remove Programs".
- In Windows Vista/7, click "Uninstall a program".

**3** Select the application that you wish to delete ("Sharpdesk" or "SHARP TWAIN AR/DM") from the list and uninstall the software.

---

---

## PRINTER SPECIFICATIONS

Printing speed	Max. 20 ppm (when printing on A4 or 8-1/2" x 11" size paper)
Resolution	600 dpi / 300 dpi* <sup>1</sup>
Network expansion kit memory* <sup>2</sup>	128 MB
Emulation	PCL6, PS3 (PostScript 3)* <sup>3</sup>
Installed fonts	PCL6 compatible: 80 outline fonts and 1 bitmap font PostScript 3 compatible* <sup>3</sup> : 136 outline fonts
Interface	10Base-T/100Base-TX Ethernet, USB 2.0 (Full Speed / Hi Speed compatible interface)

\*<sup>1</sup> 300 dpi can only be selected when using the PCL6 printer driver.

\*<sup>2</sup> For information on machine memory, see the manual for the machine.

\*<sup>3</sup> Available only if the PS3 expansion kit (MX-PK10) is installed.



As a part of our policy of continuous improvement, SHARP reserves the right to make design and specification changes for product improvement without prior notice. The performance specification figures indicated are nominal values of production units. There may be some deviations from these values in individual units.

---

---

# SCANNER SPECIFICATIONS

For information on power requirements, power consumption, dimensions, weight, and other specifications that are common to all features of the machine, refer to the operation guide for the machine.

File format	File type: TIFF/PDF/JPEG Compression mode: MH (G3)/MMR (G4)/None
File creation method	One file for all pages/One file per each 1 to 6 pages
Scan destinations	Scan to FTP, Scan to Desktop, Scan to E-mail, Scan to USB
Supported client PC operating systems (for Scan to Desktop function)	Windows 2000 Professional, Windows XP Home Edition, Windows XP Professional, Windows Server 2003, Windows Vista, Windows Server 2008, Windows 7
Web browser	Internet Explorer 5.5 or later (Windows), Netscape Navigator 6.0 or later
Management system	Uses built-in Web server
Network protocol	TCP/IP, SMTP, LDAP, DNS
Supported mail system	Mail servers supporting SMTP
Interface	10Base-T/100Base-TX Ethernet, USB 2.0 (Full Speed / Hi Speed compatible interface)
Number of destinations	200 maximum
Number of destinations for Scan To E-mail broadcast transmission	100 maximum*

\* Multiple e-mail addresses (up to 100) can be stored as a group. Note that this may reduce the maximum number of destinations (normally 200) that can be stored.

Some discrepancies may exist in the illustrations and content due to improvements to the machine.

# PRINTER DRIVER SPECIFICATIONS

Function		PCL6	PS	Windows PPD	Macintosh PPD
Frequently used functions	Number of copies	1 to 999	1 to 999	1 to 999	1 to 999
	Printing orientation	Yes	Yes	Yes	Yes
	Two-sided printing	Yes	Yes	Yes	Yes
	Binding Style	Book/Tablet	Book/Tablet	Long Side / Short Side	Long Side / Short Side
	Pamphlet Style	Yes	Yes	Yes	No
	N-up	Number	2, 4, 6, 8, 9, 16	2, 4, 6, 9, 16	2, 4, 6, 9, 16
		Order	Selectable	Fixed	Selectable
		Border	Yes/No	Yes/No	Selectable
Paper	Paper Size	Yes	Yes	Yes	Yes
	Custom Paper Size	1 size	1 size	3 sizes	1 size
	Source Selection	Yes	Yes	Yes	Yes
	Cover Settings	Yes	Yes	No	Yes
Graphics	Resolution	600/300 dpi	600 dpi	600 dpi	600 dpi
	Halftone	No	Yes	No	No
	Graphics Mode	Yes	No	No	No
	Zoom	No	Yes	Yes	Yes
	Mirror Image	No	Yes	Yes	No
	Negative Image	No	Yes	Yes	No
	Fit to Page	Yes	Yes	No	Yes* <sup>2</sup>
Fonts	Resident fonts	80 fonts	136 fonts	136 fonts	35 fonts
	Selectable download fonts	bitmap, TrueType, Graphics	bitmap, Type 1, TrueType	bitmap, Type 1, TrueType	No* <sup>3</sup>
Other functions	Auto configuration Settings	Yes* <sup>4</sup>	Yes* <sup>4</sup>	No	No
	ROPM	Yes	Yes	Yes	Yes
	Overlay	Yes	Yes	No	No
	Watermark	Yes	Yes	Yes	Yes
	Job Compression	No	Yes	No	No
	Bitmap Compression	Yes	Yes	No	No

\*<sup>1</sup> Cannot be used in Mac OS X.

\*<sup>2</sup> Can only be used in Mac OS X v10.4, 10.5, 10.6.

\*<sup>3</sup> Type 1 and TrueType can be selected in some versions of LaserWriter.

\*<sup>4</sup> Through network only (USB not supported).

**SHARP®**  
**SHARP CORPORATION**