

SOFTWARE SETUP GUIDE

DIGITAL MULTIFUNCTIONAL SYSTEM

	Page
• INTRODUCTION	1
• CONTENTS	5
• INSTALLING THE SOFTWARE (THAT ACCOMPANIES THE MACHINE)	7
• INSTALLING THE SOFTWARE (FOR OPTIONS)	20
• TROUBLESHOOTING AND USEFUL INFORMATION	39

Warranty

While every effort has been made to make this document as accurate and helpful as possible, SHARP Corporation makes no warranty of any kind with regard to its content. All information included herein is subject to change without notice. SHARP is not responsible for any loss or damages, direct or indirect, arising from or related to the use of this operation manual.

© Copyright SHARP Corporation 2004. All rights reserved. Reproduction, adaptation or translation without prior written permission is prohibited, except as allowed under copyright laws.

Note

- This manual assumes that the personnel who are installing this product and the users of the product have a working knowledge of Windows and Macintosh computers.
- For information on the operating system, please refer to your operating system manual or the online Help function.
- Some of the windows that appear in this manual may vary depending on your computer type and settings.

- In some regions the "Key operator's guide" cited in this manual is a separate manual, and in other regions the "Key operator's guide" is included in the "Operation manual (for general information and copier)".
- The dual function board mentioned in this manual can be installed as an option on some models and is installed standard on other models. For more information, see "3. PERIPHERAL DEVICES AND SUPPLIES" of the "Operation manual (for general information and copier)".

Trademark Acknowledgments

- Sharpdesk is a trademark of Sharp Corporation.
- Microsoft®, Windows®, Windows® 95, Windows® 98, Windows® Me, Windows NT® 4.0, Windows® 2000, Windows® XP, Windows® Server 2003 and Internet Explorer® are registered trademarks or trademarks of Microsoft Corporation in the U.S.A. and other countries.
- IBM, PC/AT, and PowerPC are trademarks of International Business Machines Corporation.
- Macintosh, Power Macintosh, Mac OS, LaserWriter, and AppleTalk are registered trademarks of Apple Computer, Inc.
- PostScript® is a registered trademark of Adobe Systems Incorporated.
- Acrobat® Reader Copyright© 1987-2002 Adobe Systems Incorporated. All rights reserved. Adobe, the Adobe logo, Acrobat, and the Acrobat logo are trademarks of Adobe Systems Incorporated.
- NetWare is a registered trademark of Novell, Inc.
- Agfa and the Agfa Rhombus are registered trademarks of Agfa-Gevaert A.G.
- All other trademarks and copyrights are the property of their respective owners.

The display screens, messages, and key names shown in the manual may differ from those on the actual machine due to product improvements and modifications.

INTRODUCTION

Thank you for purchasing this product. This manual explains how to install the printer driver and utilities that are required for the printer and scanner functions.

The optional network expansion kit (AR-NB3) enables the machine to be used as a network scanner and network printer. The optional PS3 expansion kit (AR-PK1/N) enables the machine to be used as a PostScript compatible printer. When the machine is used as a PostScript printer, printing is possible in both a Windows and a Macintosh environment. Note that printing in a Macintosh environment is only possible via a network connection. (Parallel and USB ports cannot be used in a Macintosh environment.)



Where "AR-XXXX" appears in this manual, please substitute the name of your model for "XXXX". For the name of the model that you are using, see "DIFFERENCES BETWEEN MODELS" in the "Operation manual (for general information and copier)".

Software setup guide (this manual)

Explains the procedures for installing the software in the "Software" CD-ROMs that accompany the machine and the optional network expansion kit (AR-NB3).

To use the machine as a printer or scanner, see this manual and the online manuals.

Using the standard printer function and scanner function

- **Operation manual (for printer and scanner)**

This is an online manual that can be found in the "Software CD-ROM (1)" that accompanies the machine.

This manual contains information necessary for using the machine as a printer and scanner, including printing by means of the standard printer driver, printing by means of the SPLC printer driver that can be used when the dual function board is installed, scanning using Button Manager, troubleshooting, and key operator programs for the printer and network functions.

Using the network printer function

- **Operation manual (for network printer)**

This is an online manual that can be found in the "Software CD-ROM (1)" that accompanies the network expansion kit.

This manual contains information necessary for using the machine as a printer, including printing condition settings, printing using the PCL5e and PCL6 printer drivers, and the PS printer driver, troubleshooting, and key operator programs for the printer and network functions.

Using the network scanner function

- **Operation manual (for network scanner)**

This is an online manual that can be found in the "Software CD-ROM (1)" that accompanies the network expansion kit.

Read this manual for information on using Scan to FTP, Scan to E-mail, and other network scanner functions.

The following help files are installed when the software on the "Software CD-ROM (1)" that accompanies the network expansion kit is installed:

- **Printer Status Monitor Help file**
- **Printer Administration Utility Help file**

Online manual contained in the "Network Utilities CD-ROM"

- **Print Server Card Online Manual**

SOFTWARE LICENSE

The SOFTWARE LICENSE will appear when you install the software from the CD-ROM. By using all or any portion of the software on the CD-ROM or in the machine, you are agreeing to be bound by the terms of the SOFTWARE LICENSE.

The explanations in this manual are based on American English and the North American version of the software. Software for other countries and regions may vary slightly from the North American version.

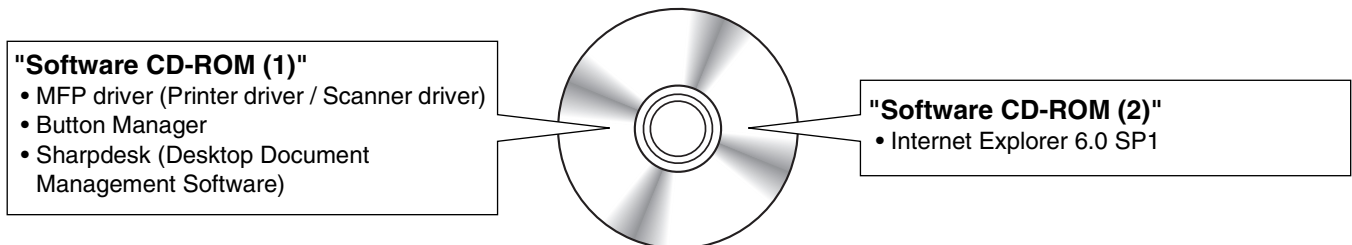
ABOUT THE CD-ROMS

This product includes CD-ROMs that are provided standard with the machine and CD-ROMs that are provided with the optional network expansion kit (AR-NB3).

For Windows

■ CD-ROM provided standard with the machine

There are two CD-ROMs that are provided with the machine.



Software CD-ROM (1)

This CD-ROM contains a wizard-type installer for installation of the utilities below and the online manual "Operation Manual (for printer and scanner)".

For the procedure for installing the software, see page 7 of this manual.

MFP Driver

• Printer driver

The printer driver enables you to use the printer function of the machine.

There are two types of printer drivers for the machine: a standard printer driver and a printer driver* that is used when the dual function board is installed.

* When the dual function board is installed, "(EB)" appears in the name of the installed printer driver. Furthermore, the printer driver for the dual function board enables a faster printing speed.

• Scanner driver

The scanner driver allows you to use the scanning function of the machine with TWAIN-compliant and WIA-compliant applications.

Button Manager

Button Manager is a software utility that allows you to use the [SCAN] key on the machine to scan a document.

Acrobat Reader 5.0

This program is used to view the online manuals on your computer screen.

Sharpdesk

Sharpdesk is an integrated software environment that makes it easy to manage document and image files and launch applications.

Online Manual

This is a manual in PDF format that is viewed using Adobe Acrobat Reader. To view the online manual "Operation Manual (for printer and scanner)" on the CD-ROM, specify the following path. (Note that "R" represents the letter of your CD-ROM drive.)

R:\Manual\EnglishA\AR_161_162_163.pdf

* "English A" in North America. "English" in Europe.



The scanning feature can only be used with computers that are running Windows 98/Me/2000/XP and are connected to the machine by a USB cable. If you are running Windows 95/NT 4.0 or are connected by a parallel cable, only printing is available.

Software CD-ROM (2)

This CD-ROM contains a minimal version of Internet Explorer 6.0 SP1. For the installation procedure, double-click "Readme.txt" in the root folder of the "Software CD-ROM (2)" to view the Readme file.

■ CD-ROMS in the network expansion kit (AR-NB3)

The optional network expansion kit includes the following four CD-ROMs:

1. "Software CD-ROM (1)" included in the network expansion kit

- PCL5e and PCL6 drivers, and PS driver
- Printer Status Monitor
- Printer Administration Utility
- NICManager
- Macintosh PPD File

2. "Network Utilities" CD-ROM

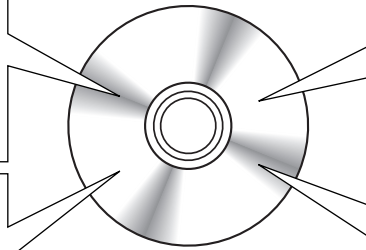
This CD-ROM contains utilities for using the machine as a network printer and an online manual.

3. "Sharpdesk" CD-ROM

- Sharpdesk (Desktop Document Management Software)
- Network Scanner Tool
- SHARP TWAIN AR/DM (TWAIN driver)
- OmniPage Pro Trial (ScanSoft, inc.)

4. "Software CD-ROM (2)"

- Internet Explorer 6.0 SP1



1. "Software CD-ROM (1)" included in the network expansion kit

This CD-ROM contains a wizard-type installer for installation of the following utilities, and online manuals. For the procedure for installing the software, see page 20 of this manual.

Printer driver

Contains the PCL5e and PCL6 printer drivers, and the PS printer driver that are needed to use this product.

Printer Status Monitor*1

When using the printer in a network environment, this provides messages and displays that allow you to monitor the status of the printer.

Printer Administration Utility*1

When using the printer in a network environment, this administration utility makes it possible to configure printer settings and monitor the printer from a computer. (This utility is for use by system administrators.)

NICManager

Use this program to configure and check the IP address when the machine is connected to a network.

Acrobat Reader 5.0

This program is used to view the online manuals on your computer screen.

To install Acrobat Reader, see page 42 of this manual.

Online Manuals

Manuals in PDF format that are viewed using Adobe Acrobat Reader. To view the online manuals on the CD-ROM, specify the following paths. (Note that "R" represents the letter of your CD-ROM drive.)

- **For network printer:** R:\Manual\EnglishA*2\OnlineManual\AR_NB3_Prn.pdf
- **For network scanner:** R:\Manual\EnglishA*2\OnlineManual\AR_NB3_Scn.pdf

*1 In order to use the Printer Status Monitor and Printer Administration Utility, the machine must be connected to a network.

*2 "English A" in North America. "English" in Europe.

2. "Network Utilities" CD-ROM

This CD-ROM contains an online manual and utilities for using the machine as a network printer.

Please read before using (Readme):

This contains information on the contents of the "Network Utilities" CD-ROM, how to use the utilities, how to view the online manual, and limitations.

Print Server Card Quick Setup:

This is a wizard-type utility for Windows 95, Windows 98, Windows Me, Windows NT 4.0, Windows 2000, Windows XP, and Windows Server 2003 that allows you to conveniently configure the print server.

Print Server Card Standard Setup:

This installs and launches "NICManager", which enables administration and configuration of advanced print server settings.

Online Manual:

This manual in PDF format explains how to use the "Network Utilities" CD-ROM.

3. "Sharpdesk" CD-ROM

Sharpdesk is an integrated software environment that makes it easy to manage document and image files, and launch applications.

For information on the "Sharpdesk" CD-ROM and how to install Sharpdesk, see the "Sharpdesk installation guide" that accompanies the machine.

Sharpdesk (Desktop Document Management Software)

Sharpdesk is used to manage images scanned from the machine and files created in various software programs.

Network Scanner Tool

This is a utility that helps you use Scan to Desktop. The utility allows you to configure settings to receive scanned images from the machine to your computer. You can have Sharpdesk launch automatically when your computer receives a scanned image from the machine.

SHARP TWAIN AR/DM

This is used to acquire black and white images from a TWAIN interface into TWAIN-compliant software applications.

OmniPage Pro Trial (ScanSoft, inc.)

This is used to scan text printed on paper and convert the image data into text data by means of OCR (Optical Character Recognition).

4. "Software CD-ROM (2)"

This CD-ROM contains a minimal version of Internet Explorer 6.0 SP1. For the installation procedure, double-click "Readme.txt" in the root folder of the "Software CD-ROM (2)" to view the Readme file.

Using the machine in a macintosh environment

To use the machine as a printer for the Macintosh, the PS3 expansion kit (AR-PK1/N) must be installed.

Install the PPD file needed to use the machine as a printer from the "Software CD-ROM (1)" that accompanies the network expansion kit (AR-NB3).

1. "Software CD-ROM (1)" that accompanies the network expansion kit

This CD-ROM contains the software that is needed to use the machine in a Macintosh environment and the online manuals "Operation Manual (for network printer)" and "Operation Manual (for network scanner)".

To open the online manual "Operation Manual (for network printer)", double-click the [AR-NB3 Printer Manual] folder, the [EnglishA]* folder, and then the [Printer Manual] icon.

To open the online manual "Operation Manual (for network scanner)", double-click the [AR-NB3 Scanner Manual] folder, the [EnglishA]* folder, and then the [Scanner Manual] icon.

For the procedure for installing the software, see page 32 of this manual.

*"English A" in North America. "English" in Europe.

PPD file

This file contains printer information necessary for printing.

Acrobat Reader 4.05

This program is used to view the online manuals on your computer screen.

To install Acrobat Reader, see page 42 of this manual.



The PPD file on the "Software CD-ROM (1)" that accompanies the network expansion kit cannot be used when the machine is connected to your computer with a USB or parallel cable.

2. "Network Utilities" CD-ROM that accompanies the network expansion kit

This CD-ROM contains utilities required when using the machine as a printer in a Macintosh environment.

PSC Setup Utility

This is a utility that lets you configure the machine's network settings from a Macintosh.

Online Manual

This manual in PDF format explains how to use the "Network Utilities" CD-ROM.

CONTENTS

INTRODUCTION	1
● SOFTWARE LICENSE	1
● ABOUT THE CD-ROMS	2

1

INSTALLING THE SOFTWARE (THAT ACCOMPANIES THE MACHINE)

BEFORE INSTALLATION	7
● HARDWARE AND SOFTWARE REQUIREMENTS	7
● INSTALLATION ENVIRONMENT AND USEABLE SOFTWARE	7
INSTALLING THE SOFTWARE	7
● INSTALLATION USING THE INSTALLER	7
● INSTALLATION METHOD 1	8
● INSTALLATION METHOD 2	10
● INSTALLATION METHOD 3	12
● INSTALLATION METHOD 4	14
● USING THE MACHINE AS A SHARED PRINTER VIA A SERVER	16
SETTING UP BUTTON MANAGER	18
● WINDOWS XP	18
● WINDOWS 98/ME/2000	19

2

INSTALLING THE SOFTWARE (FOR OPTIONS)

INSTALLATION FOR A NETWORK CONNECTION	20
--	-----------

SETUP IN A WINDOWS ENVIRONMENT

HARDWARE AND SOFTWARE REQUIREMENTS	21
SETTING THE IP ADDRESS OF THE MACHINE	21
INSTALLING THE SOFTWARE	24
● INSTALLING THE PRINTER DRIVER (STANDARD INSTALLATION)	24
● CUSTOM INSTALLATION	26
● USING THE MACHINE AS A SHARED PRINTER VIA A SERVER	28
● INSTALLING THE PS DISPLAY FONTS	30
USING THE PPD FILE	31
● Installing the resident font information (only when the PPD file is installed in Windows 95/98/Me)	31

SETUP IN A MACINTOSH ENVIRONMENT

HARDWARE AND SOFTWARE REQUIREMENTS	32
APPLETALK SETTINGS	32
INSTALLING THE PPD FILE.....	32
● INSTALLATION IN MAC OS X	32
● INSTALLATION IN MAC OS 8.6 TO 9.2.2.....	34
● INSTALLING THE SCREEN FONTS (MAC OS 8.6 - 9.2.2)	34
CONFIGURING THE PRINTER DRIVER	35
● MAC OS X V10.2 TO 10.3.4	35
● MAC OS X v10.1.5.....	37
● MAC OS 8.6 TO 9.2.2.....	38

3

TROUBLESHOOTING AND USEFUL INFORMATION

TROUBLESHOOTING	39
CONFIGURING THE PRINTER DRIVER	42
INSTALLING ACROBAT READER.....	42
CHECKING THE IP ADDRESS	43
HARDWARE AND SOFTWARE REQUIREMENTS	43
CONNECTING TO A COMPUTER	44

1

INSTALLING THE SOFTWARE (THAT ACCOMPANIES THE MACHINE)

BEFORE INSTALLATION

HARDWARE AND SOFTWARE REQUIREMENTS

Before installing the software, see "HARDWARE AND SOFTWARE REQUIREMENTS" on page 43 to make sure your computer meets the hardware and software requirements.

INSTALLATION ENVIRONMENT AND USEABLE SOFTWARE

The software that can be installed varies depending on your operating system version and type of connection to the machine.

	MFP Driver		Button Manager	Sharpdesk
	Printer driver	Scanner driver		
Windows 98/Me/2000/XP USB 2.0 connection* ¹	Available* ^{2,3}	Available	Available	Available
Windows 95/98/Me/NT 4.0/2000/XP Parallel connection		Not Available	Not Available	Available* ⁴

*¹ Windows 98/Me does not support USB 2.0. A USB 2.0 connection can be used in Windows 98/Me, however, the performance will be the same as USB 1.1. The print speed based on USB 2.0 specifications can only be attained if your computer is running Windows 2000/XP, you are using a cable that supports USB 2.0, and the cable is connected to a USB 2.0 port on your computer. If the connection is made through a hub, the hub must support USB 2.0.

USB 2.0 (Hi-Speed) can be used when the dual function board is installed.

*² When the machine is connected using a parallel cable, the Print Status Window can only be used when the parallel port is set to ECP mode.

*³ The printer driver that is installed varies depending on the type of connection between the machine and your computer.

*⁴ Sharpdesk can be installed when using a parallel cable, however, the machine's scanner function cannot be used. Windows 95 and Windows NT 4.0 are not supported.

INSTALLING THE SOFTWARE



- The scanner feature only works when using a USB cable.
- If an error message appears, follow the instructions on the screen to solve the problem. After the problem is solved, continue the installation procedure. Depending on the problem, you may have to exit the installer. In this case, click the [Cancel] button to quit the installer and then reinstall the software from the beginning after solving the problem.
- When installing Sharpdesk, if Internet Explorer 5.5 or later is not installed on your computer, see the Internet Explorer installation procedure in the Readme file (Readme.txt) in the root folder of the "Software CD-ROM (2)". If you are only going to install Sharpdesk after installing Internet Explorer (for example, when the other components have already been installed), perform a custom installation (follow steps 2 through 7 in "INSTALLATION METHOD 2" and then install only Sharpdesk in steps 11 and 12).

INSTALLATION USING THE INSTALLER

The software programs installed and the steps for installation vary depending on the version of Windows you are running and the type of connection to your computer. Refer to the following table for the appropriate procedure for your environment.

Windows version Type of connection	Windows XP	Windows 2000/98/Me	Windows 95/NT 4.0
USB cable connection* (standard installation)	INSTALLATION METHOD 1 (pages 8 to 9)		
USB cable connection* (custom installation)	INSTALLATION METHOD 2 (pages 10 to 11)	INSTALLATION METHOD 3 (pages 12 to 13)	
Parallel cable connection (custom installation)		INSTALLATION METHOD 4 (pages 14 to 15)	

* Windows 95 and Windows NT 4.0 are not supported.

INSTALLATION METHOD 1

Use this procedure to install the software in the following environments:

1. The printer is connected by USB cable.
2. Windows version: Windows 98/Windows Me/Windows 2000*/Windows XP*

The following procedure uses Windows XP as an example. Follow the same steps to install the software on other operating systems.



* To install the software, you must have administrator's rights.

Standard installation (only when using a USB cable)

The procedure for a standard installation of the software is explained below.

The standard installation procedure is normally used when the machine is connected by a USB cable and you wish to install all the software components.



If the machine is used as a shared printer via a server or is connected by a parallel cable and you only wish to install certain components, select "Custom installation". (Pages 10 to 17)

1 Make sure that the USB cable is not connected to the machine.

If the cable is connected, a Plug and Play window will appear. If this happens, click the [Cancel] button to close the window and disconnect the cable.



The cable will be connected in step 9.

2 Insert the "Software CD-ROM (1)" that accompanies the machine into your computer's CD-ROM drive.

3 Click the [start] button, click [My Computer] (), and then double-click the [CD-ROM] icon ().

In Windows 98/Me/2000, double-click [My Computer], and then double-click the [CD-ROM] icon.

4 Double-click the [Setup] icon ().



If the language selection screen appears after you double click the [Setup] icon, select the language that you wish to use and click the [Next] button. (Normally the correct language is selected automatically.)

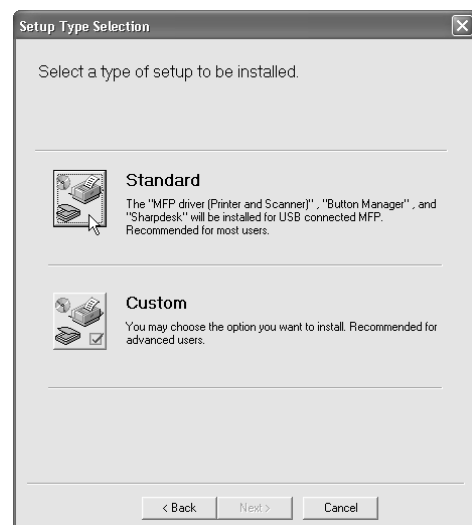
5 The "SOFTWARE LICENSE" window will appear. Make sure that you understand the contents of the license agreement and then click the [Yes] button.

6 Read the message in the "Welcome" window and then click the [Next] button.

7 Click the [Standard] button.

After the "Integrated Installer is preparing..." message appears, the software components below will be automatically installed. Follow the on-screen instructions.

- MFP Driver
- Button Manager
- Sharpdesk



8 When the "Finish" screen appears, click the [Close] button.

When "Now connect the MFP interface cable to the PC." appears, click the [OK] button.



If you are using Windows 2000/XP

If a warning message regarding the Windows logo test or digital signature appears, be sure to click the [Continue Anyway] or [Yes] button.



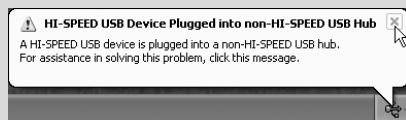
After the installation, a message prompting you to restart your computer may appear. If this message appears, click the [Yes] button to restart your computer.

9 Connect the machine to your computer with the USB cable. (Page 44)

Make sure that the machine is powered on. The machine is found and a plug and play window appears. Follow the on-screen instructions.



• If the following message appears on your computer screen, close it.



A window regarding "HI-SPEED USB Device" will then appear. Close the window.

This message appears when the machine's USB 2.0 mode is not set to "Hi-Speed". For information on switching the USB 2.0 mode, see the "Key operator's guide".

• If you are using Windows 2000/XP

If a warning message regarding the Windows logo test or digital signature appears, be sure to click the [Continue Anyway] or [Yes] button.



If the dual function board is installed, the "AR-XXXX (EB)" printer driver and scanner driver will be installed.

This completes the installation.

- After installing the MFP Driver, see "CONFIGURING THE PRINTER DRIVER" (page 42) to configure the printer driver settings.
- After installing Button Manager, see "SETTING UP BUTTON MANAGER" (page 18) to set up Button Manager.

INSTALLATION METHOD 2

Use this procedure to install the software in the following environments:

1. The printer is connected by USB cable or parallel cable.
2. Windows version: Windows XP



To install this software, you must have administrator's rights.

Custom installation

Installation methods 2 through 4 are for custom installations of the software. If the machine is used as a shared printer via a server or is connected by a parallel cable and you only wish to install required software components, select "Custom installation".

1 Make sure that the USB or parallel cable is not connected to the machine and your computer.

If the cable is connected, a Plug and Play window will appear. If this happens, click the [Cancel] button to close the window and disconnect the cable.



The cable will be connected in step 14.

2 Insert the "Software CD-ROM (1)" that accompanies the machine into your computer's CD-ROM drive.

3 Click the [start] button, click [My Computer] (), and then double-click the [CD-ROM] icon ().

4 Double-click the [Setup] icon ().

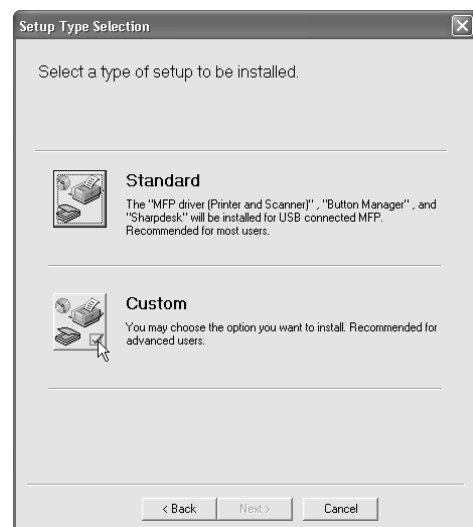


If the language selection screen appears after you double click the [Setup] icon, select the language that you wish to use and click the [Next] button. (Normally the correct language is selected automatically.)

5 The "SOFTWARE LICENSE" window will appear. Make sure that you understand the contents of the license agreement and then click the [Yes] button.

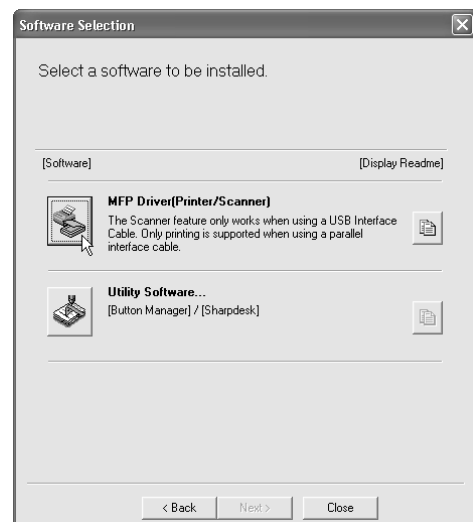
6 Read the message in the "Welcome" window and then click the [Next] button.

7 Click the [Custom] button.



8 If you wish to install the MFP driver, click the [MFP Driver (Printer/Scanner)] button.

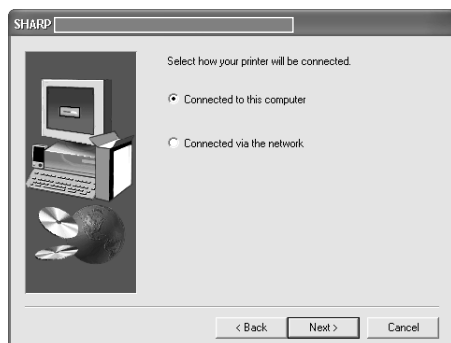
To view information on the software, click the [Display Readme] button.



9 Click the [Next] button.

10 The files required for installation of the MFP driver are copied (if "MFP Driver" was selected in Step 8).

Follow the on-screen instructions.
When you are asked how the printer is connected, select [Connected to this computer] and click the [Next] button.



Caution If a warning message regarding the Windows logo test appears while the MFP driver files are being copied (the warning message may appear several times), be sure to click the [Continue Anyway] button.

When "The installation of the SHARP software is complete" appears, click the [OK] button.

11 If you wish to install Button Manager or Sharpdesk, click the [Utility Software] button in step 8.

12 Click the [Button Manager] or [Sharpdesk] button.

To view information on the software, click the [Display Readme] button.
Follow the on-screen instructions.



- If you are using a parallel cable, do not select "Button Manager". This feature is not supported when a parallel cable is used.
- When a message appears prompting you to connect the USB cable, click the [OK] button. For the software that can be installed, see "INSTALLATION ENVIRONMENT AND USEABLE SOFTWARE" (page 7).

13 Click the [Close] button.



After the installation, a message prompting you to restart your computer may appear. In this case, click the [Yes] button to restart your computer.

14 Connect the machine to your computer with the interface cable. (Page 44)

- If you are using a USB cable, make sure the machine power is turned on and then connect the cable.
- If you are using a parallel cable, turn off both the machine power and the computer power and then connect the cable. Turn the machine power on first and then turn on your computer. The machine is found and a plug and play window appears. If you are using a parallel cable, go to step 16.



Caution If the following message appears on your computer screen, close it.



- A window regarding "HI-SPEED USB Device" will then appear. Close the window.
- This message appears when the machine's USB mode is not set to "Hi-Speed" mode. For information on switching the USB 2.0 mode, see the "Key operator's guide".

15 Installation of the scanner driver begins. (only when using a USB cable).

"SHARP AR-XXXX" will appear in the "Found New Hardware Wizard" dialog box. Select [Install the software automatically (Recommended)], click the [Next] button, and follow the on-screen instructions.



If a warning window appears regarding the "Windows logo test", be sure to click the [Continue Anyway] button.

16 Installation of the printer driver begins.

"SHARP AR-XXXX" will appear in the "Found New Hardware Wizard" dialog box. Select [Install the software automatically (Recommended)], click the [Next] button, and follow the on-screen instructions.



If a warning window appears regarding the "Windows logo test", be sure to click the [Continue Anyway] button.



If the dual function board is installed, the "AR-XXXX (EB)" printer driver and scanner driver will be installed.

This completes the installation.

- If you installed the MFP Driver, see "CONFIGURING THE PRINTER DRIVER" (page 42) to configure the printer driver settings.
- If you installed Button Manager, see "SETTING UP BUTTON MANAGER" (page 18) to set up Button Manager.

INSTALLATION METHOD 3

Use this procedure to install the software in the following environments:

1. The printer is connected by USB cable.
2. Windows version: Windows 98/Windows Me/Windows 2000*



* To install this software, you must have administrator's rights.

1 Make sure that the USB cable is not connected to the machine.

If the cable is connected, a Plug and Play window will appear. If this happens, click the [Cancel] button to close the window and disconnect the cable.



The cable will be connected in step 11.

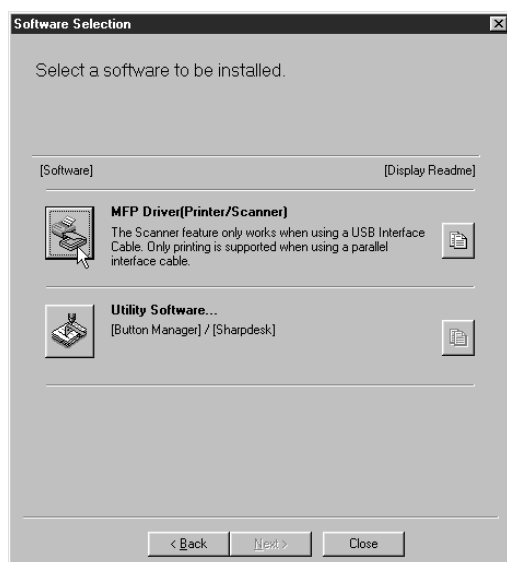
2 Insert the "Software CD-ROM (1)" that accompanies the machine into your computer's CD-ROM drive.

3 Double-click [My Computer] and then double-click the [CD-ROM] icon.

4 Follow steps 4 through 7 in "INSTALLATION METHOD 2".

5 If you wish to install the MFP driver, click the [MFP Driver (Printer/Scanner)] button.

To view information on the software, click the [Display Readme] button.

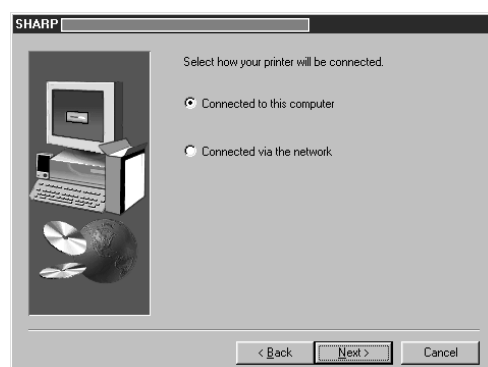


6 Click the [Next] button.

7 The files required for installation of the MFP driver are copied (if "MFP Driver" was selected in Step 5).

Follow the on-screen instructions.

When you are asked how the printer is connected, select [Connected to this computer] and click the [Next] button.



When the interface selection screen appears, select [USB].



If you are using Windows 2000

If you are using Windows 2000 and a warning message regarding the digital signature appears while the MFP driver files are being copied (the warning message may appear several times), be sure to click the [Continue Anyway] button.

When "The MFP driver installation is complete." appears, click the [OK] button.

8 If you wish to install Button Manager or Sharpdesk, click the [Utility Software] button in step 5.

If you do not wish to install either, go to step 10.

9 Click the [Button Manager] or [Sharpdesk] button.

- To view information on the software, click the [Display Readme] button.
- Follow the on-screen instructions.

10 Click the [Close] button.



After the installation, a message prompting you to restart your computer may appear. In this case, click the [Yes] button to restart your computer.

11 Connect the machine to your computer with the USB cable. (Page 44)

Make sure that the machine is powered on. The machine is found and a plug and play window appears. Follow the on-screen instructions.



If you are using Windows 2000

If a warning message regarding the digital signature appears, be sure to click the [Yes] button.



If the dual function board is installed, the "AR-XXXX (EB)" printer driver and scanner driver will be installed.

This completes the installation.

- If you installed the MFP Driver, see "CONFIGURING THE PRINTER DRIVER" (page 42) to configure the printer driver settings.
- If you installed Button Manager, see "SETTING UP BUTTON MANAGER" (page 18) to set up Button Manager.

INSTALLATION METHOD 4

Use this procedure to install the software in the following environments:

1. The printer is connected by parallel cable.
2. Windows version: Windows 95/Windows 98/Windows Me/Windows NT 4.0*/Windows 2000*



* To install this software, you must have administrator's rights.

1 Make sure that the parallel cable is not connected to the machine and your computer before proceeding.

If the cable is connected, a Plug and Play window will appear. If this happens, click the [Cancel] button to close the window and disconnect the cable.



The cable will be connected in step 17.

2 Insert the "Software CD-ROM (1)" that accompanies the machine into your computer's CD-ROM drive.

3 Double-click [My Computer] and then double-click the [CD-ROM] icon.

4 Follow steps 4 through 7 in "INSTALLATION METHOD 2".

5 If you wish to install the MFP driver, click the [MFP Driver (Printer/Scanner)] button.

To view information on the software, click the [Display Readme] button.

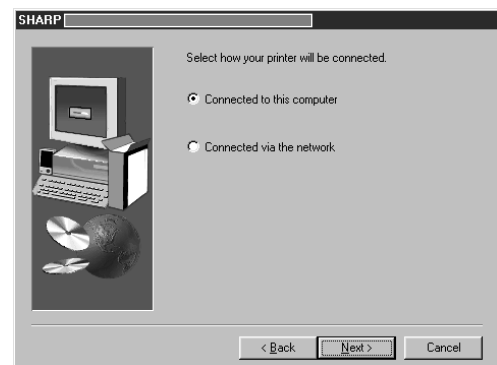


6 Click the [Next] button.

7 Installation of the MFP driver (printer driver) begins (if "MFP Driver" was selected in Step 5).

Follow the on-screen instructions. If you are using Windows 95/NT 4.0, go to step 10.

8 When you are asked how the printer is connected, select [Connected to this computer] and click the [Next] button.

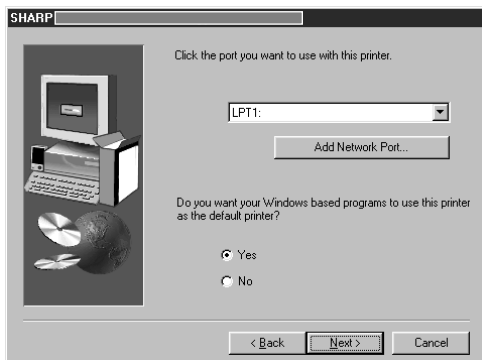


9 When the interface selection screen appears, select [Parallel] and click the [Next] button.



10 Select the printer port and click the [Next] button.

Select [LPT1] for the printer port.



If [LPT1] does not appear, another printer or peripheral device is using [LPT1]. In this case continue the installation, and after the installation is finished, change the port setting so that the machine can use [LPT1]. This procedure is explained in "Another printer is using the parallel port (when using a parallel cable)" (page 41).

11 When asked to select the printer driver to install, select the appropriate printer driver based on whether or not the dual function board is installed, and then click the [Next] button.

If the dual function board is not installed, be sure to select [For standard model].



If the dual function board is not installed and you select the printer driver for the dual function board, printing will not be possible.

12 When the model selection window appears, select model name of your machine and click the [Next] button.

13 Click the [Yes] button.

14 When "The MFP driver installation is complete." appears, click the [OK] button.

15 If you wish to install Sharpdesk, click the [Utility Software] button in step 5.

If you do not wish to install Sharpdesk, go to step 18.



In Windows 95/NT 4.0, the [Utility Software] button does not appear.

16 Click the [Sharpdesk] button.

- To view information on the software, click the [Display Readme] button.
- Follow the on-screen instructions.



- In Windows 95/NT 4.0, the [Button Manager] button does not appear.
- In Windows 98/Me/2000, do not select the [Button Manager] button (Button Manager is not supported when a parallel cable is used).

17 When the "Finish" screen appears, click the [Close] button.

When "Now connect the MFP interface cable to the PC." appears, click the [OK] button.



After the installation, a message prompting you to restart your computer may appear. In this case, click the [Yes] button to restart your computer.

18 Turn off the power of the machine and your computer, and connect the machine to your computer with the parallel cable. (Page 44)

After connecting the machine to your computer, turn on the power of the machine and then start up your computer.

This completes the installation.

If you installed the MFP driver, see "CONFIGURING THE PRINTER DRIVER" (page 42) to configure the printer driver settings.

USING THE MACHINE AS A SHARED PRINTER VIA A SERVER

The machine can be used as a shared printer in a Windows 95/98/Me/NT 4.0/2000/XP network environment. Note that the Windows network environment must already be established.

Follow these steps to install the printer driver in the client computer.

Ask your network administrator for the server name and printer name of the machine on the network.



For the procedure for configuring settings in the printer server, see the "Operation manual (for printer and scanner)".

The "printer server" explained here is a computer that is connected to the machine, and "clients" are other computers connected to the same network as the printer server.

1 Insert the "Software CD-ROM (1)" that accompanies the machine into your computer's CD-ROM drive.

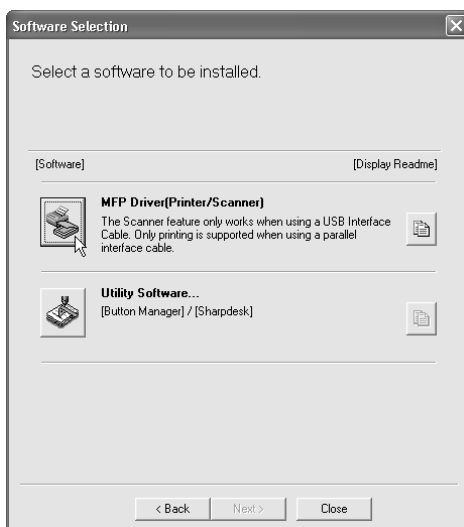
2 Click the [start] button, click [My Computer] (), and then double-click the [CD-ROM] icon ().

In Windows 95/98/Me/NT 4.0/2000, double-click [My Computer] and then double-click the [CD-ROM] icon.

3 Follow steps 4 through 7 in "INSTALLATION METHOD 2".

4 Click the [MFP Driver (Printer/Scanner)] button.

To view information on the software, click the [Display Readme] button.

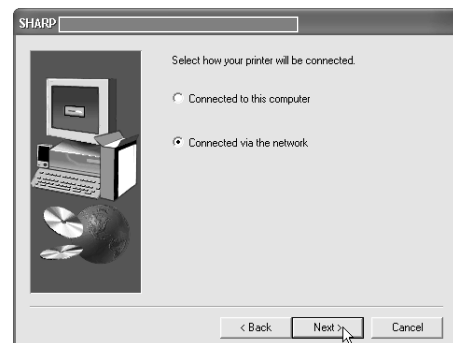


5 Click the [Next] button.

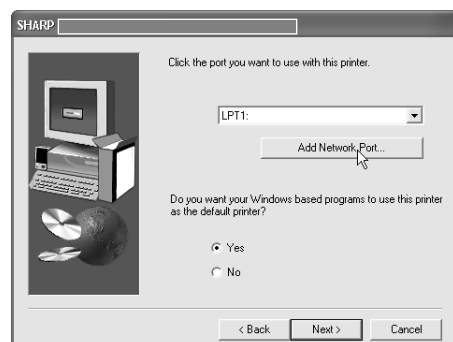
6 The files required for installation of the MFP driver are copied (if "MFP Driver" was selected in Step 4).

Follow the on-screen instructions.

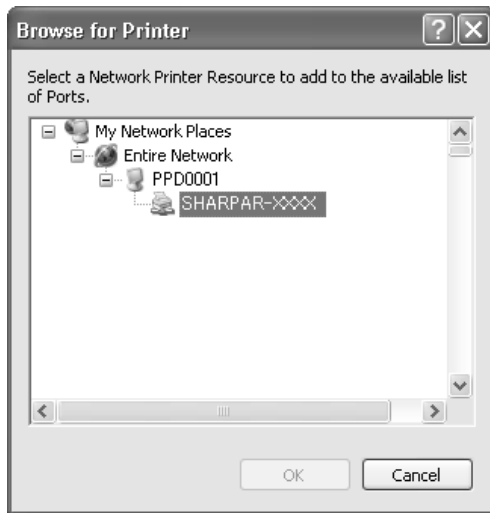
When you are asked how the printer is connected, select [Connected via the network] and click the [Next] button.



7 When you are asked to select the printer port to be used, click the [Add Network Port] button.



8 Select the network printer that is shared and click the [OK] button.



Note Ask your network administrator for the server name and printer name of the machine on the network.

9 In the printer port selection window, verify the network printer that is shared and click the [Next] button.

10 When the model selection window appears, select model name of your machine and click the [Next] button.

Follow the on-screen instructions.



Caution If you are using Windows 2000/XP.

If a warning message regarding the Windows logo test or digital signature appears, be sure to click the [Continue Anyway] or [Yes] button.

11 Click the [Close] button.

This completes the installation.

SETTING UP BUTTON MANAGER

Button Manager is a software program that works with the scanner driver to enable scanning from the operation panel of the machine.

To scan using the operation panel of the machine, Button Manager must be linked with the destination that appears in the display. Follow the steps below to link Button Manager to machine scanner events.



If computers are connected to both of the USB ports on the machine, separate Button Manager settings are required for USB-1 and USB-2. (when the dual function board is installed.)

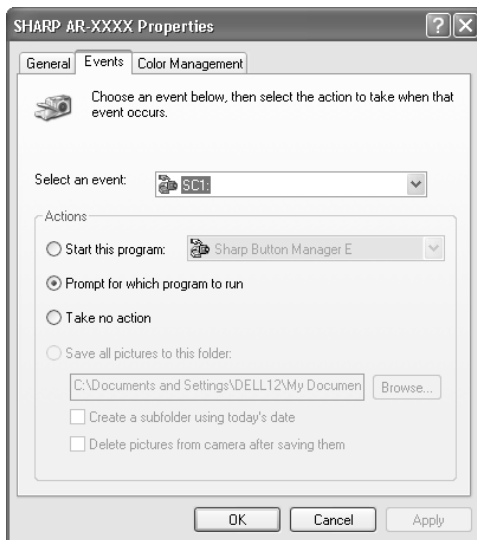
WINDOWS XP

1 Click the [start] button, click [Control Panel], click [Printers and Other Hardware], and then click [Scanners and Cameras].

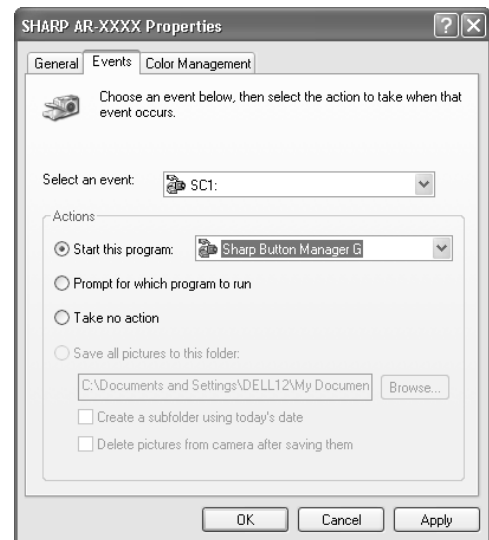
2 Click the [SHARP AR-XXXX] icon and select [Properties] from the [File] menu.

3 In the "Properties" screen, click the [Events] tab.

4 Select [SC1:] from the "Select an event" pull-down menu.



5 Select [Start this program] and then select [Sharp Button Manager G] from the pull-down menu.



6 Click the [Apply] button.

7 Repeat Steps 4 through 6 to link Button Manager to [SC2:] through [SC6:].

- Select [SC2:] from the "Select an event" pull-down menu. Select [Start this program], select [Sharp Button Manager G] from the pull-down menu, and then click the [Apply] button. Do the same for each ScanMenu through [SC6:].
- When the settings have been completed, click the [OK] button to close the screen.

Button Manager is now linked to the machine scan destinations SC1 to SC6.

- The scan settings for each of scan destinations SC1 through SC6 can be changed in the setting window of Button Manager.
- For the default settings for destinations SC1 to SC6 and the procedures for configuring Button Manager settings, see "Scanning from the Operation Panel of the Machine" and "Button Manager Settings" in "Operation Manual (for printer and scanner)" in the "Software CD-ROM (1)" that accompanies the machine.

WINDOWS 98/ME/2000

1 Click the [Start] button, select [Settings], and then click [Control Panel].

2 Double-click the [Scanners and Cameras] icon.



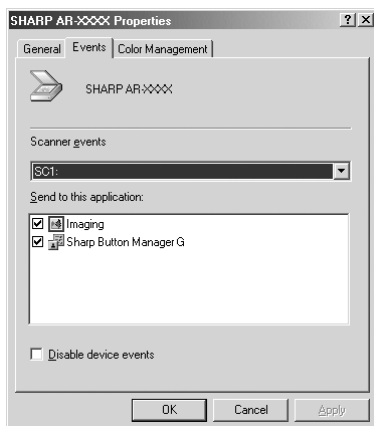
If the [Scanners and Cameras] icon does not appear in Windows Me, click [view all Control Panel options].

3 Select [SHARP AR-XXXX] and click the [Properties] button.

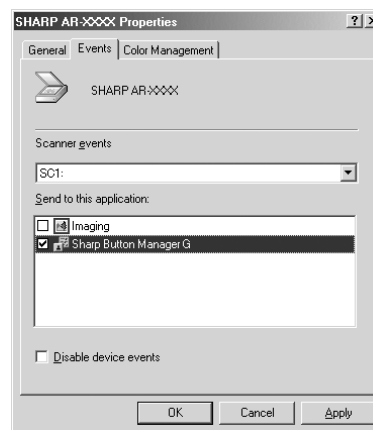
In Windows Me, right click [SHARP AR-XXXX] and click [Properties] in the menu that appears.

4 In the "Properties" screen, click the [Events] tab.

5 Select [SC1:] from the "Scanner events" pull-down menu.



6 Select [Sharp Button Manager G] in "Send to this application".



If other applications are shown, deselect the checkboxes for the other applications and leave only the Button Manager checkbox selected.

7 Click the [Apply] button.

8 Repeat Steps 5 through 7 to link Button Manager to [SC2:] through [SC6:].

- Select [SC2:] from the "Scanner events" pull-down menu. Select [Sharp Button Manager G] in "Send to this application" and click the [Apply] button. Do the same for each scan destination through [SC6:].
- When the settings have been completed, click the [OK] button to close the screen.



In Windows 2000, restart your computer.

Button Manager is now linked to the machine scan destinations SC1 to SC6.

- The scan settings for each of scan destinations SC1 through SC6 can be changed in the setting window of Button Manager.
- For the default settings for destinations SC1 to SC6 and the procedures for configuring Button Manager settings, see "Scanning from the Operation Panel of the Machine" and "Button Manager Settings" in "Operation Manual (for printer and scanner)" in the "Software CD-ROM (1)" that accompanies the machine.

2

INSTALLING THE SOFTWARE (FOR OPTIONS)

INSTALLATION FOR A NETWORK CONNECTION

The procedures for installing the software when the machine is used as a network printer using the optional network expansion kit (AR-NB3) are explained in this chapter. Refer to the following table for the installation procedure to follow depending on whether you are using a Windows environment (TCP/IP network) or a Macintosh environment.

Operating system	Procedure to follow
Windows	(1) SETTING THE IP ADDRESS OF THE MACHINE (page 21) (2) INSTALLING THE SOFTWARE (page 24)
Macintosh	(1) INSTALLING THE PPD FILE (page 32) (2) CONFIGURING THE PRINTER DRIVER (page 35)

About network environments

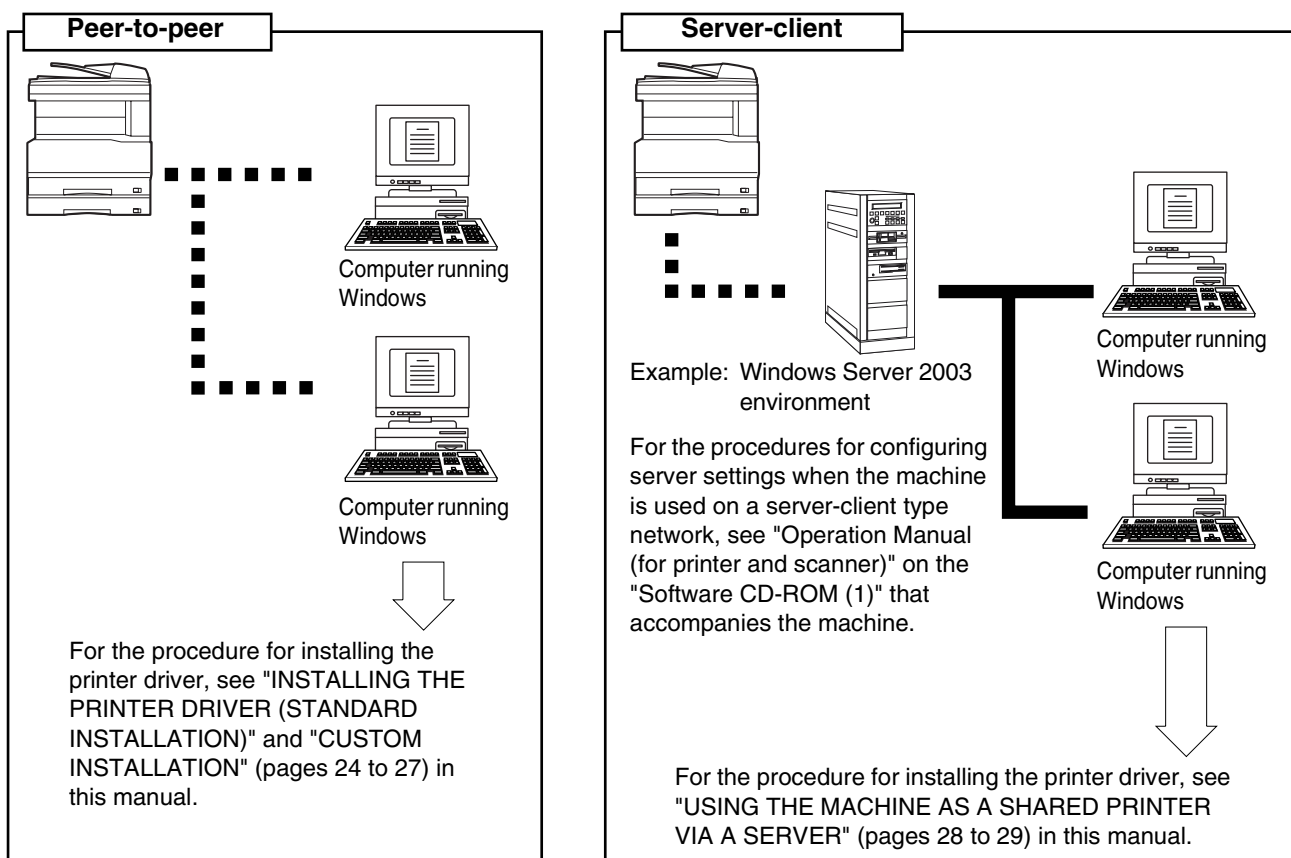
There are several types of network environments. Typical environments include the following:

- Windows network environment
- NetWare network environment
- UNIX network environment
- Macintosh network environment

This manual explains peer-to-peer and server-client network connections in a Windows environment.

If the machine is used in a different network environment, see the online manual ("Print Server Card User's Manual") on the "Network Utilities" CD-ROM.

Network connection examples



TCP/IP protocol
 Microsoft Printing Protocol

SETUP IN A WINDOWS ENVIRONMENT

HARDWARE AND SOFTWARE REQUIREMENTS

Before installing the software, see "HARDWARE AND SOFTWARE REQUIREMENTS" on page 43 to make sure your computer meets the hardware and software requirements.

SETTING THE IP ADDRESS OF THE MACHINE

Before installing the printer driver, be sure to set the IP address of the machine. Consult your network administrator for the correct IP address, subnet mask, and default gateway to be entered. **If a DHCP server will automatically assign an IP address to the machine, the following procedure is not necessary.** (To check the IP address assigned to the machine by DHCP, see "CHECKING THE IP ADDRESS" (page 43).)



Caution If the machine is used in a DHCP environment, the machine's IP address may change automatically. If this happens, printing will no longer be possible. In this event, use a WINS server or do not use the machine in a DHCP environment.

1 Make sure that the LAN cable is connected to the machine and then power on the machine.

2 Insert the network expansion kit "Software CD-ROM (1)" into your computer's CD-ROM drive.

3 Click the [start] button, click [My Computer] (), and then double-click the [CD-ROM] icon ().

In Windows 95/98/Me/NT 4.0/2000, double-click [My Computer] and then double-click the [CD-ROM] icon.

4 Double-click the [Setup] icon ().



If the language selection screen appears after you double click the [Setup] icon, select the language that you wish to use and click the [Next] button. (Normally the correct language is selected automatically.)

5 The "SOFTWARE LICENSE" window will appear. Make sure that you understand the contents of the license agreement and then click the [Yes] button.

6 Read the message in the "Welcome" window and then click the [Next] button.

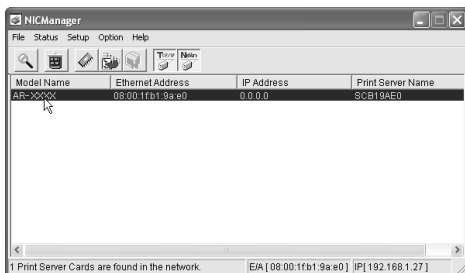
7 Click the [Administrator Tools] button.



8 Click the [NICManager] button.



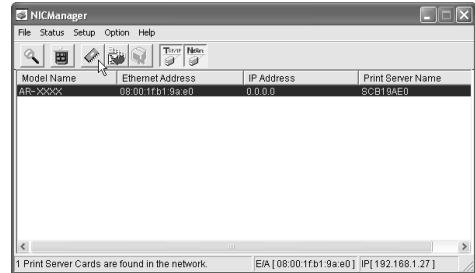
9 The printer or printers connected to the network will be detected. Click the printer to be configured (the machine). Select [AR-XXXX] here.



If the machine is not found, make sure that the machine is powered on and that your computer and the machine are connected to the network, and then search again.

10 Click the [Print Server Card Setup] button.

If the machine is being used in a DHCP environment or the IP address has otherwise already been set, go to step 15.



11 If the IP address has not been set (the IP address is set to "0.0.0.0"), a message will appear prompting you to set the IP address. Click the [Yes] button.

12 Enter the IP address and click the [OK] button.

- The machine's IP address is changed.
- If a password entry screen appears while the IP address is being changed, enter the password and click the [OK] button.
- The password for this machine has been initially set to "Sharp".

13 Restart the machine.

Power off the machine and then power it back on.

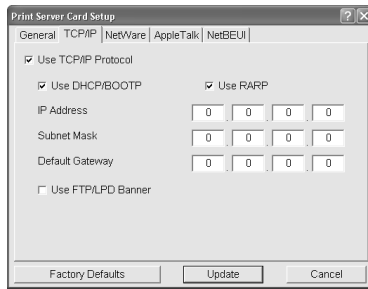
14 Select [Search] from the [File] menu, select the machine, and then click the [Print Server Card Setup] button.

15 Enter your password in the password entry screen and click the [OK] button.

- The Print Server Card Setup window will appear.
- The password for the machine has been initially set to "Sharp".
- If the [Guest user] checkbox is selected, the settings can be viewed but not configured.

16 Click the [TCP/IP] tab.

- 17** Configure the settings and then click the [Update] button.



Be sure to ask your network administrator for the correct IP address, subnet mask, and default gateway to be entered.

- 18** Your changes to the settings appear. Make sure that the changes are correct and then click the [OK] button.

- 19** Restart the machine.

Power off the machine and then power it back on.

- 20** Select [Search] from the [File] menu.

The IP address that you entered will appear. Make sure that it is correct.

This completes the procedure for setting the IP address.

INSTALLING THE SOFTWARE

INSTALLING THE PRINTER DRIVER (STANDARD INSTALLATION)



If you wish to install the display font or specify the machine's IP address by direct entry when installing the printer driver, select [Custom installation]. (Page 26)



To use the machine as a network printer in Windows NT 4.0, "TCP/IP Protocol" must be installed on your computer. If this is not installed, see Windows NT 4.0 Help to install them.

1 Insert the network expansion kit "Software CD-ROM (1)" into your computer's CD-ROM drive.

2 Click the [start] button, click [My Computer] (), and then double-click the [CD-ROM] icon ().

In Windows 95/98/Me/NT 4.0/2000, double-click [My Computer] and then double-click the [CD-ROM] icon.

3 Double-click the [Setup] icon ().



If the language selection screen appears after you double click the [Setup] icon, select the language that you wish to use and click the [Next] button. (Normally the correct language is selected automatically.)

4 The "SOFTWARE LICENSE" window will appear. Make sure that you understand the contents of the license agreement and then click the [Yes] button.

5 Read the message in the "Welcome" window and then click the [Next] button.

6 Click the [Printer Driver] button.

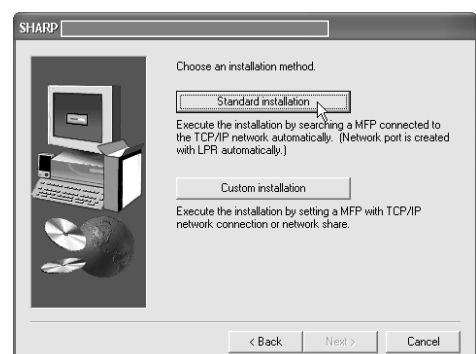
To view information on the software, click the [Display Readme] button.



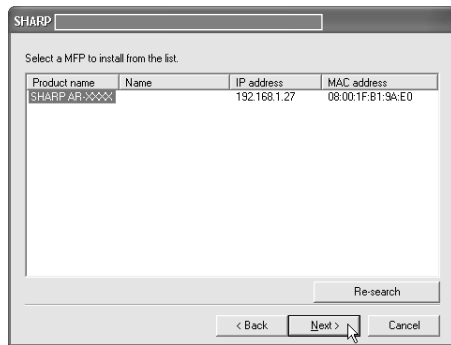
- If you wish to install the printer status monitor, click the [Printer Status Monitor] button in this window and follow the on-screen instructions.
- If you wish to install the printer administration utility, click the [Administrator Tools] button in this window and then click the [Printer Administration Utility] button and follow the on-screen instructions.

7 Click the [Next] button.

8 Click the [Standard installation] button.



- 9** Printers connected to the network are detected. Select the machine and click the [Next] button.

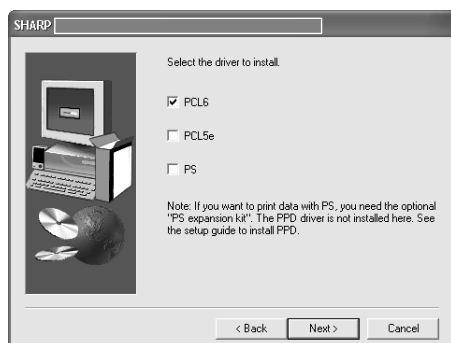


If the machine is not found, make sure that the machine is powered on and that the machine and your computer are connected to the network, and then search again. If the machine is still not found, use the custom installation procedure to directly specify the IP address. (Page 26)

- 10** A confirmation window will appear. Check the contents and then click the [Next] button.

- 11** When the printer driver selection window appears, select the printer driver to be installed and click the [Next] button.

Select the checkboxes of the printer drivers to be installed.



To use the PS printer driver, the PS3 expansion kit must be installed.

- 12** Select whether or not you wish the printer to be your default printer and click the [Next] button.

If you are installing multiple printer drivers, select the printer that you wish to use as your default printer.

If you do not wish to set either printer driver as the default printer, select [No].

- 13** Check the contents of the window and click the [Next] button.

Installation of the printer driver begins.



Caution If you are using Windows 2000/XP/Server 2003

If a warning message regarding the Windows logo test or digital signature appears, be sure to click the [Continue Anyway] or [Yes] button.

- 14** When "The installation of the SHARP software is complete" appears, click the [OK] button.

- 15** Click the [Close] button.



After the installation, a message prompting you to restart your computer may appear. In this case, click the [Yes] button to restart your computer.

This completes the installation of the software.

After installation, see "CONFIGURING THE PRINTER DRIVER" (page 42) to check the printer driver settings.





If you installed the PS printer driver, the PS display font can be installed from the "PRINTER UTILITIES" CD-ROM that accompanies the PS3 expansion kit. (Page 30)

CUSTOM INSTALLATION

If you wish to install the display font or specify the machine's IP address by direct entry when installing the printer driver, select [Custom installation].

1 Insert the network expansion kit "Software CD-ROM (1)" into your computer's CD-ROM drive.

2 Click the [start] button, click [My Computer] (), and then double-click the [CD-ROM] icon ().

In Windows 95/98/Me/NT 4.0/2000, double-click [My Computer] and then double-click the [CD-ROM] icon.

3 Double-click the [Setup] icon ().



Note If the language selection screen appears after you double click the [Setup] icon, select the language that you wish to use and click the [Next] button. (Normally the correct language is selected automatically.)

4 The "SOFTWARE LICENSE" window will appear. Make sure that you understand the contents of the license agreement and then click the [Yes] button.

5 Read the message in the "Welcome" window and then click the [Next] button.

6 Click the [Printer Driver] button.

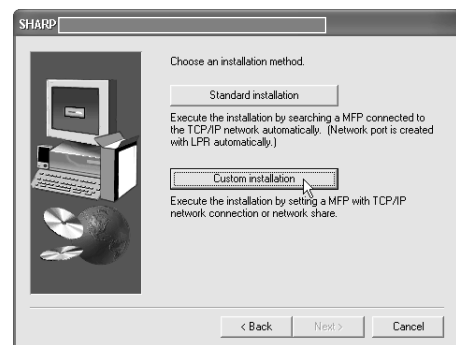
To view information on the software, click the [Display Readme] button.



- If you wish to install the printer status monitor, click the [Printer Status Monitor] button in this window and follow the on-screen instructions.
- If you wish to install the printer administration utility, click the [Administrator Tools] button in this window and then click the [Printer Administration Utility] button and follow the on-screen instructions.

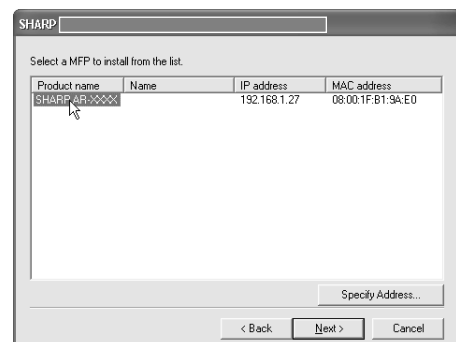
7 Click the [Next] button.

8 Click the [Custom installation] button.



9 Select [LPR Direct Print] and click the [Next] button.

10 Printers connected to the network are detected. Select the machine and click the [Next] button.

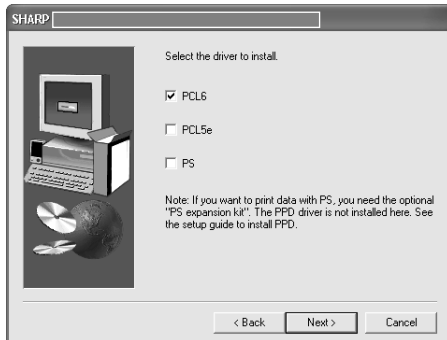


If you wish to directly specify the IP address, click the [Specify Address] button, enter the IP address, and click the [Search] button.

11 A confirmation window appears. Check the contents and then click the [Next] button.

12 When the printer driver selection window appears, select the printer driver to be installed and click the [Next] button.

Select the checkboxes of the printer drivers to be installed.



To use the PS printer driver, the PS3 expansion kit must be installed.

13 Select whether or not you wish the printer to be your default printer and click the [Next] button.

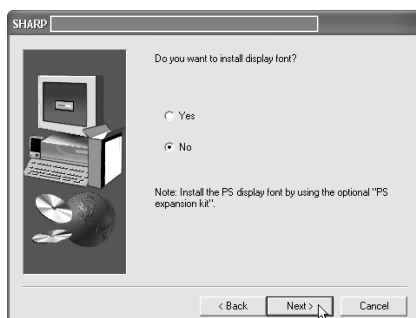
If you are installing multiple printer drivers, select the printer that you wish to use as your default printer.

If you do not wish to set either printer driver as the default printer, select [No].

14 When the printer name window appears, click the [Next] button.

If you wish to change the printer name, enter the desired name.

15 Select whether or not you wish to install the display font and click the [Next] button.



16 Check the contents of the window and click the [Next] button.

Installation of the printer driver begins.



Caution If you are using Windows 2000/XP/Server 2003

If a warning message regarding the Windows logo test or digital signature appears, be sure to click the [Continue Anyway] or [Yes] button.

17 When "The installation of the SHARP software is complete" appears, click the [OK] button.

18 Click the [Close] button.



After the installation, a message prompting you to restart your computer may appear. In this case, click the [Yes] button to restart your computer.

This completes the installation.

After the installation, see "CONFIGURING THE PRINTER DRIVER" (page 42) to check the printer driver settings.



If you installed the PS printer driver, the PS display font can be installed from the "PRINTER UTILITIES" CD-ROM that accompanied the PS3 expansion kit. (Page 30)

USING THE MACHINE AS A SHARED PRINTER VIA A SERVER

If the printer server in a Windows NT server environment, NetWare server environment, or other environment is configured to share the printer (the machine), follow the steps below to install the printer driver in each client computer.

Ask your network administrator for the server name and printer name of the machine on the network.



For the procedures for configuring settings on the printer server, see "Operation Manual (for printer and scanner)" on the "Software CD-ROM (1)" that accompanies the machine.
"Print server" as explained here is a computer that is directly connected to the machine, and a "Client" is any other computer that is connected to the same network.

1 Insert the network expansion kit "Software CD-ROM (1)" into your computer's CD-ROM drive.

2 Click the [start] button, click [My Computer] (), and then double-click the [CD-ROM] icon ().

In Windows 95/98/Me/NT 4.0/2000, double-click [My Computer] and then double-click the [CD-ROM] icon.

3 Double-click the [Setup] icon ().



If the language selection screen appears after you double click the [Setup] icon, select the language that you wish to use and click the [Next] button. (Normally the correct language is selected automatically.)

4 The "SOFTWARE LICENSE" window will appear. Make sure that you understand the contents of the license agreement and then click the [Yes] button.

5 Read the message in the "Welcome" window and then click the [Next] button.

6 Click the [Printer Driver] button.

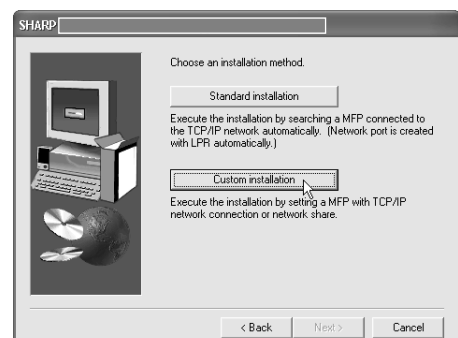
To view information on the software, click the [Display Readme] button.



- If you wish to install the printer status monitor, click the [Printer Status Monitor] button in this window and follow the on-screen instructions.
- If you wish to install the printer administration utility, click the [Administrator Tools] button in this window and then click the [Printer Administration Utility] button and follow the on-screen instructions.

7 Click the [Next] button.

8 Click the [Custom installation] button.



9 Select [Shared Printer] and click the [Next] button.

10 For the port to be used, select the machine (configured as a shared printer), and click the [Next] button.

You can also click the [Add Network Port] button and select the printer to be shared (the machine) by browsing the network in the window that appears.

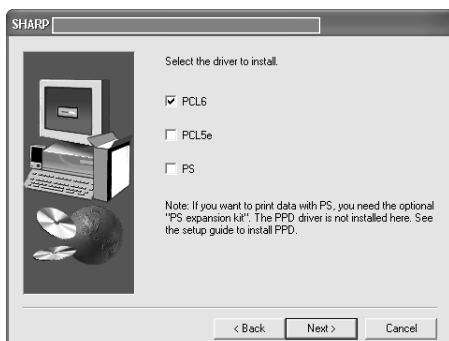


If the shared printer does not appear in the list, check the settings on the printer server.

11 When the model selection window appears, select model name of your machine and click the [Next] button.

12 When the printer driver selection window appears, select the printer driver to be installed and click the [Next] button.

Be sure to select the same printer driver as that of the shared printer (the machine).



13 Follow the on-screen instructions.



After the installation, a message prompting you to restart your computer may appear. In this case, click the [Yes] button to restart your computer.

This completes the installation.

After installation, see "CONFIGURING THE PRINTER DRIVER" (page 42) to check the printer driver settings.



If you installed the PS printer driver, the PS display font can be installed from the "PRINTER UTILITIES" CD-ROM that accompanied the PS3 expansion kit. (Page 30)

INSTALLING THE PS DISPLAY FONTS

The fonts used by the PS printer driver are contained in the "PRINTER UTILITIES" CD-ROM that accompanied the PS3 expansion kit (AR-PK1/N). Install these fonts as needed for the PS printer driver.

1 Insert the PS3 expansion kit (AR-PK1/N) "PRINTER UTILITIES" CD-ROM into your computer's CD-ROM drive.

If your computer is configured for CD-ROM auto start, the installation window appears. Go to step 4.

2 Click the [start] button, click [My Computer] (), and then double-click the [CD-ROM] icon ().

In Windows 95/98/Me/NT 4.0/2000, double-click [My Computer] and then double-click the [CD-ROM] icon.

3 Double-click the [Setup] icon ().

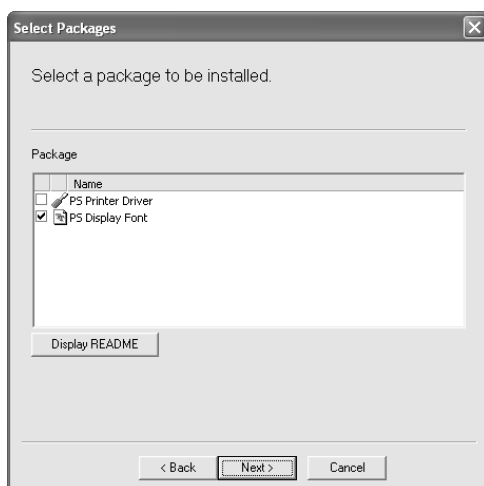


If the language selection screen appears after you double click the [Setup] icon, select the language that you wish to use and click the [Next] button. (Normally the correct language is selected automatically.)

4 Select [PS Display Font] and click the [Next] button.



- Do not select [PS Printer Driver].
- The PS printer driver for the machine is installed from the "Software CD-ROM (1)" that accompanies the network expansion kit (AR-NB3).



5 Follow the on-screen instructions.

USING THE PPD FILE

The PPD file enables the machine to print using the standard PS driver of the operating system. Install the PPD file as needed.

Use the Add Printer Wizard in Windows to install the PPD file.

Be sure to read the Readme file (Readme.txt) before installing the PPD file. The Readme file is in the "EnglishA" or "English" folder. For the location of the folder, see step 4.

1 Click the [start] button, click [Control Panel], click [Printers and Other Hardware], and then click [Printers and Faxes].

- In Windows 95/98/Me/NT 4.0/2000, click the [Start] button, select [Settings], and then click [Printers].
- In Windows Server 2003, click the [Start] button and then click [Printers and Faxes].

2 Insert the network expansion kit "Software CD-ROM (1)" into your computer's CD-ROM drive.

3 Click [Add a printer] in [Printer Tasks].

- In Windows 95/98/Me/NT 4.0/2000, double-click the [Add Printer] icon.
- The "Add Printer Wizard" will appear.

4 Follow the on-screen instructions.

When you are asked to specify the path of the PPD file, enter the path as follows. (Substitute the letter of your CD-ROM drive for "R" in the following paths.)

Operating system	PPD file path
Windows 95/98/Me	R:\Drivers\Printer \EnglishA*\PPD\9XME
Windows NT 4.0	R:\Drivers\Printer \EnglishA*\PPD\NT40
Windows 2000/XP/Server 2003	R:\Drivers\Printer \EnglishA*\PPD\2KXP

* "English A" in North America. "English" in Europe.

Installing the resident font information (only when the PPD file is installed in Windows 95/98/Me)

If you have installed the PPD file in Windows 95/98/Me and will be using the resident fonts, you must install the resident font information. Follow the procedure below to install the resident font information.



- If you are using Windows 2000, Windows XP, Windows Server 2003, the resident font information is automatically installed when the PPD file is installed.
- Before installing the resident font information, be sure to install the PPD file.

1 Insert the network expansion kit "Software CD-ROM (1)" into your computer's CD-ROM drive.

2 Double-click [My Computer] () and then double-click the [CD-ROM] icon ().

3 Double-click the [Drivers] folder, the [Printer] folder, the [EnglishA] folder (for regions other than the U.S., double-click the [English] folder), the [PPD] folder, the [9XME] folder, and then [PFMSetup.exe].

4 Follow the on-screen instructions.

5 After the resident font information has been installed, restart your computer.



If printer resident fonts cannot be specified from an application, the resident font information has not been installed or the information has been corrupted. In this case, reinstall the resident font information.

SETUP IN A MACINTOSH ENVIRONMENT

HARDWARE AND SOFTWARE REQUIREMENTS

Before installing the PPD file for Macintosh, see "HARDWARE AND SOFTWARE REQUIREMENTS" on page 43 to make sure your computer meets the hardware and software requirements.

Operating system	Mac OS 8.6 to 9.2.2, 10.1.5 and 10.2 to 10.2.8 (excluding 10.2.2), 10.3 to 10.3.4
CPU and RAM	The requirements of the operating system must be satisfied.

APPLETALK SETTINGS

After connecting the machine to the network, configure AppleTalk settings as required for your network environment. To configure the settings, see the online manual on the "Network Utilities" CD-ROM.

INSTALLING THE PPD FILE

In order to print from a Macintosh, the PPD file must be installed. Follow the steps below to install the PPD file.

INSTALLATION IN MAC OS X

1 Insert the network expansion kit "Software CD-ROM (1)" into your computer's CD-ROM drive.

2 Double-click the [CD-ROM] icon (📀) on the desktop.

3 Double-click the [MacOSX] folder.

4 Double-click the folder of the operating system version you are using.

- In Mac OS X v10.1.5, double-click the [Version 10.1] folder.
- In Mac OS X v10.2 to 10.2.8 (excluding 10.2.2), double-click the [Version 10.2] folder.
- In Mac OS X v10.3 to 10.3.4, double-click the [Version 10.3] folder.

5 Double-click the [AR-NB3-1] icon (📁).



Note

- If the "Authenticate" window appears, enter the password and click the [OK] button.
- If you are using Mac OS X v10.1.5, click the lock icon (🔒), enter the password, and click the [OK] button.

6 Click the [Continue] button.**7 The License Agreement window will appear. Make sure that you understand the contents of the license agreement and then click the [Continue] button.**

A message will appear asking you if you agree to the terms of the license. Click the [Agree] button.

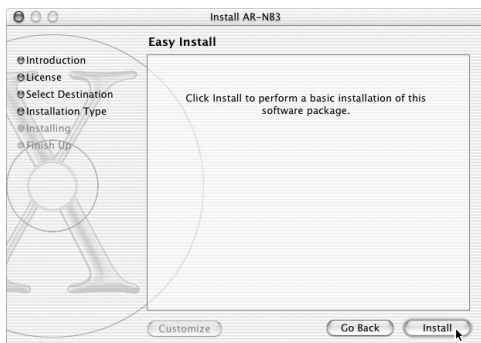
Caution If a different language appears, switch to English.

8 Select the hard disk in which you wish to install the PPD file and click the [Continue] button.

Be sure to select the hard disk in which your operating system is installed.

9 Click the [Install] button.

Installation of the PPD file begins.



If you are using Mac OS X v10.3 to 10.3.4, the "Authenticate" window will appear. Enter the password and click the [OK] button.

10 When the message "The software was successfully installed" appears in the installation window, click the [Close] button.

This completes the installation of the software.

INSTALLATION IN MAC OS 8.6 TO 9.2.2

1 Insert the network expansion kit "Software CD-ROM (1)" into your computer's CD-ROM drive.

2 Double-click the [CD-ROM] icon (📀) on the desktop.

3 Double-click the [MacOS] folder.

4 Double-click the [Installer] icon (📦).

The installer window will appear.

5 Click the [Install] button.



6 The License Agreement window will appear. Make sure that you understand the contents of the license agreement and then click the [Yes] button.

7 Read the message in the window that appears and click the [Continue] button.

Installation of the PPD file begins.

After the installation, a message prompting you to restart your computer will appear. Click the [OK] button and restart your computer.

This completes the installation of the software.



Note If you are using Mac OS 8.6 to 9.2.2, make sure that "LaserWriter8" has been installed and that the "LaserWriter8" checkbox is selected (☑) in "Extensions Manager" in "Control Panels". If not, install it from the system CD-ROM supplied with your Macintosh computer.

INSTALLING THE SCREEN FONTS (MAC OS 8.6 - 9.2.2)

Macintosh screen fonts are contained in the [Font] folder of the "PRINTER UTILITIES" CD-ROM that accompanies the PS3 expansion kit (AR-PK1/N). The screen fonts are installed by copying the required screen font suitcase folders to your Macintosh.

Copy the screen fonts to the following folder:

- Mac OS 8.6 to 9.2.2: [Fonts] folder in the [System Folder]



Note If you experience problems that may be due to the installed screen fonts, immediately delete the copied font suitcase folder from the system.

CONFIGURING THE PRINTER DRIVER

Follow the steps below to configure the machine's printer driver.

MAC OS X V10.2 TO 10.3.4

1 Make sure that the machine is powered on.

2 Select [Applications] from the [Go] menu.



3 Double-click the [Utilities] folder.

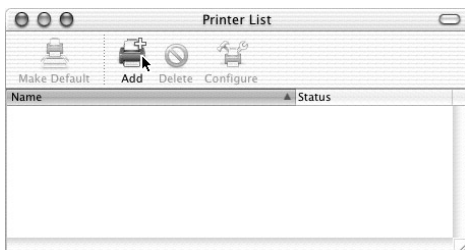
4 Double-click the [Print Center] icon ().

- In Mac OS X v10.3 to 10.3.4, double-click the [Printer Setup Utility] icon.
- The "Printer List" window appears.



If this is the first time you are installing a printer driver on your computer, a confirmation message will appear. Click the [Add] button.

5 Click [Add].



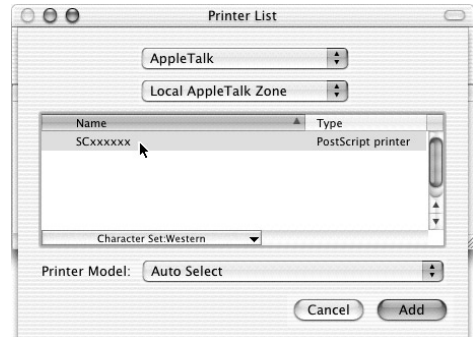
6 Select [AppleTalk] in the menu at the top of the window.

A list of printers connected to the network will appear.



If multiple AppleTalk zones are displayed, select the zone which includes the printer.

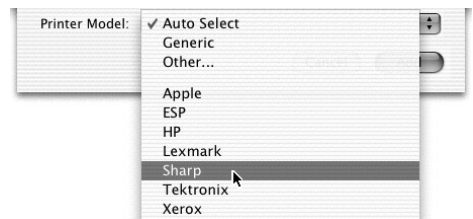
7 Click the machine's model name in the list.



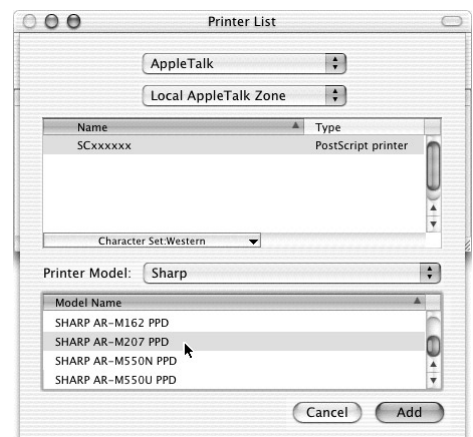
The name of the machine that appears is the name that was entered in the AppleTalk settings when the network settings were configured. Unless the name was changed when configuring the settings, it will be [SCxxxxxx] (where "xxxxxx" is a sequence of characters that varies depending on your machine).

8 Select [Sharp] in the [Printer Model] menu.

The PPD file selection window appears.



9 Select the PPD file for your model.



10 Click the [Add] button.

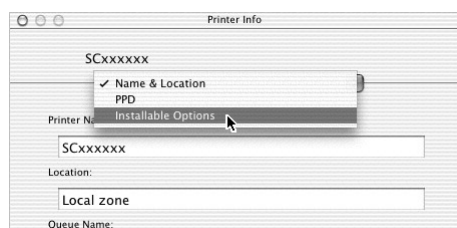
The machine is added to the list of printers.

11 Click the name of the machine in the "Printer List" window, and select [Show Info] from the [Printers] menu.

The "Printer info" window will appear.



12 Select [Installable Options] from the menu.



13 Set the printer configuration based on the options that have been installed, and then click the [Apply Changes] button.

14 Close the window.

This completes the configuration of the printer driver.

MAC OS X v10.1.5

1 Make sure that the machine is powered on.

2 Select [Applications] from the [Go] menu.



3 Double-click the [Utilities] folder.

4 Double-click the [Print Center] icon (🖨️).

The "Printer List" window appears.



If this is the first time you are installing a printer driver on your computer, a confirmation message will appear. Click the [Add] button.

5 Click the [Add Printer] button.



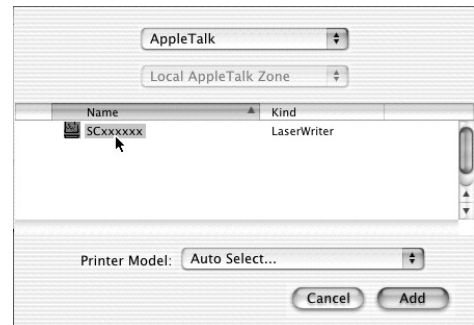
6 Select [AppleTalk] in the menu at the top of the window.

A list of printers connected to the network will appear.



If multiple AppleTalk zones are displayed, select the zone which includes the printer.

7 Click the machine's model name in the list.



The name of the machine that appears is the name that was entered in the AppleTalk settings when the network settings were configured. Unless the name was changed when configuring the settings, it will be [SCxxxxxx] ("xxxxxx" is a sequence of characters that varies depending on your machine).

8 Click the [Printer Model] menu and select [Other] from the list of PPD files.

The PPD file selection window will appear.

9 Click the startup disk name and then [Library], [Printers], [PPDs], [Contents], [Resources], [en.lproj], and select the PPD file of your model.

10 Click the [Choose] button.

11 Click the [Add] button.

This completes the configuration of the printer driver.

2

MAC OS 8.6 TO 9.2.2

1 Select [Chooser] from the Apple Menu.

2 Click the [LaserWriter 8] icon.

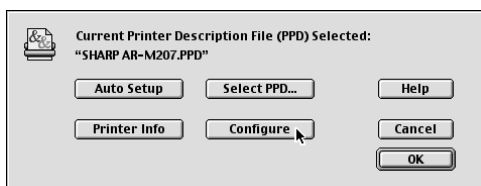
- The model name of your network-connected machine ([SCxxxxxx]) appears in the "Select a PostScript Printer" list on the right. The name of the machine that appears is the name that was entered in the AppleTalk settings when the network settings were configured. Unless the name was changed when configuring the settings, it will be [SCxxxxxx] ("xxxxxx" is a sequence of characters that varies depending on your machine).
- If multiple AppleTalk zones are displayed, select the zone which includes the printer.

3 Click the machine's model name ([SCxxxxxx]) in the "Select a PostScript Printer" list.

4 Click the [Create] button.

- If the "Select a PostScript Printer Description File" dialog box appears, select the PPD file of your model and then click the [Select] button.
- If the "Select a PostScript Printer Description File" dialog box does not appear, follow these steps to select the PPD file manually when you return to the "Chooser" dialog box.
 - (1) Verify that the machine is selected in the "Select a PostScript Printer" list, and then click the [Setup] button and the [Select PPD] button.
 - (2) Select the PPD file of your model, and then click the [Open] (or [Select]) button.
 - (3) Click the [OK] button.

5 Verify that the machine is selected in the "Select a PostScript Printer" list, and then click the [Setup] button and the [Configure] button.



6 Configure the printer driver based on the options that have been installed and then click the [OK] button.

7 Click the [OK] button to close the dialog box.

8 Click the Close box (☐) to close the "Chooser".

This completes the configuration of the printer driver.

TROUBLESHOOTING

If the software does not install correctly or if you need to remove the software, check the following items on your computer.

Troubleshooting information can also be found in the README files for each of the software programs. To view a README file for a software program, click the [Display Readme] button in the software selection window that appears during installation.

Removing the software

To remove a printer driver or a utility that has been installed using the installer, follow the procedure below.

Windows environment

1 Click the [start] button and then click [Control Panel].

- In Windows 95/98/Me/NT 4.0/2000, click the [Start] button, select [Settings], and then click [Control Panel].

2 Click [Add or Remove Programs].

- In Windows 95/98/Me/NT 4.0/2000, double-click the [Add/Remove Programs] icon.

3 Select the driver or utility that you wish to remove from the list, and click the appropriate button to remove it.

- For more information, see the manual or help files for your operating system.

4 Restart your computer.

MACINTOSH ENVIRONMENT(Mac OS 8.6 to 9.2.2)

1 Insert the "Software CD-ROM (1)" into your CD-ROM drive.

2 Double-click the [CD-ROM] icon (📀) on the desktop and double-click the [Mac OS] folder.

3 Double-click the [Installer] icon (📦).

4 Select [Remove] from the Install menu and then click the [Remove] button.**Note**

There is no remove tool for Mac OS X.
The PPD file for Mac OS X has been copied to the following folder in the startup disk:
[Library] - [Printers] - [PPDs] - [Contents] - [Resources] - [En.lproj]
Delete the SHARP PPD file in this folder.

MFP driver does not install (Windows 2000/XP)

If the MFP driver does not install in Windows 2000/XP, follow these steps to check your computer's settings.

1 Click the [start] button and then click [Control Panel].

In Windows 2000, click the [Start] button, select [Settings], and then click [Control Panel].

2 Click [Performance and Maintenance] and then click [System].

In Windows 2000, double-click the [System] icon.

3 Click the [Hardware] tab and then click the [Driver Signing] button.

4 Check the settings for "What action do you want Windows to take?" ("File signature verification" in Windows 2000).



If the [Block] has been selected, it will not be possible to install the MFP driver. To select [Warn] and then install the MFP driver, see "INSTALLING THE SOFTWARE" (page 7).

Plug and play screen does not appear (when using a USB cable)

If the Plug and Play screen does not appear after you connect the machine to your computer with a USB cable and turn on the machine, follow the steps below to verify that the USB port is available.

1 Click the [start] button, click [Control Panel], and then click [Performance and Maintenance].

In Windows 98/Me/2000, click the [Start] button, select [Settings], and then click [Control Panel].

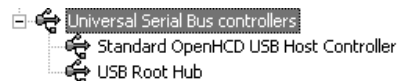
2 Click [System], click the [Hardware] tab, and click the [Device Manager] button.

"Universal Serial Bus controllers" will appear in the list of devices.



- In Windows 98/Me, double-click the [System] icon and click the [Device Manager] tab.
- In Windows 2000, double-click the [System] icon, click the [Hardware] tab, and click the [Device Manager] button.
- If the [System] icon does not appear in Windows Me, click [view all Control Panel options].

3 Click the icon (+) beside "Universal Serial Bus controllers".



Two items should appear: your controller chipset type and Root Hub. If these items appear, you can use the USB port. If the "Universal Serial Bus controllers" shows a yellow exclamation point or if the above two items do not appear, you must check your computer manual for USB troubleshooting or contact your computer manufacturer.

4 Once you have verified that the USB port is enabled, see "INSTALLING THE SOFTWARE" (page 7) to install the MFP driver.

The MFP driver cannot be correctly installed by Plug and Play (Windows 2000/XP)

In Windows 2000/XP, if the MFP driver cannot be correctly installed by Plug and Play (for example, Plug and Play takes place without copying the required files for the MFP driver installation from the installer), follow these steps to remove unneeded devices. To install the MFP driver, see "INSTALLING THE SOFTWARE" (page 7).

1 Click the [start] button, click [Control Panel], and then click [Performance and Maintenance].

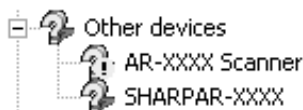
In Windows 2000, click the [Start] button, select [Settings], and then click [Control Panel].

2 Click [System], click the [Hardware] tab, and click the [Device Manager] button.



In Windows 2000, double-click the [System] icon, click the [Hardware] tab, and click the [Device Manager] button.

3 Click the icon () beside "Other devices".



If "AR-XXXX Scanner" and "SHARP AR-XXXX" appear, select and delete both these items.



If "Other devices" does not appear, close the "Device Manager" window.

4 To install the MFP driver, see "INSTALLING THE SOFTWARE" (page 7).

Another printer is using the parallel port (when using a parallel cable)

If another printer is using the parallel port and printing is not possible using the machine, follow the steps below to change the port setting of the other printer driver, and make sure that the port of the printer driver for the machine is set to "LPT1".

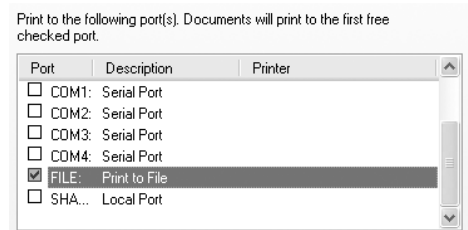
1 Click the [start] button, click [Control Panel], click [Printers and Other Hardware], and then click [Printers and Faxes].

In Windows 95/98/Me/NT 4.0/2000, click the [Start] button, select [Settings], and then click [Printers].

2 Click the icon of the printer driver for which you wish to change the port setting, and select [Properties] from the [File] menu.

3 Click the [Ports] tab. In Windows 95/98/Me, click the [Details] tab.

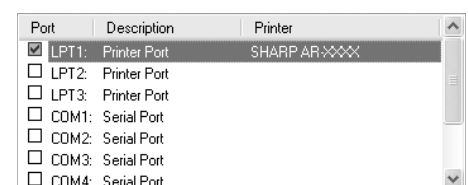
4 Select [FILE:] in the [Print to the following port] list box, and click the [OK] button.



5 Click the [SHARP AR-XXXX] icon and select [Properties] from the [File] menu.

6 Click the [Ports] tab. In Windows 95/98/Me, click the [Details] tab.

7 Select [LPT1] in the "Print to the following port" list and click the [OK] button.



In the event that you need to use the other printer, repeat the above steps to set the port of the machine to [FILE:], and change the port setting of the other printer back to [LPT1].

CONFIGURING THE PRINTER DRIVER

After installing the MFP driver (printer driver) or the printer driver for an option, make sure that the printer driver is set as the default printer and that the number of trays on the machine and the paper size of each tray are configured in the printer driver.

- 1 Click the [start] button, click [Control Panel], click [Printers and Other Hardware], and then click [Printers and Faxes].**

- In Windows 95/98/Me/NT 4.0/2000, click the [Start] button, select [Settings], and then click [Printers].
- In Windows Server 2003, click the [Start] button and then click [Printers and Faxes].

- 2 Click the "SHARP AR-XXXX" printer driver icon and select [Set as Default Printer].**

- 3 Click the [SHARP AR-XXXX] printer driver icon and select [Properties] from the [File] menu.**

If you are using Windows NT 4.0/2000/XP/Server 2003, go to step 5.

- 4 In Windows 95/98/Me, click the [Setup] tab.**

- 5 Click the [Configuration] tab and configure the printer driver based on the options that have been installed.**

Be sure to select the correct printer configuration. If not, printing may not take place correctly.



To automatically configure the settings based on the detected machine status, click the [Auto Configuration] button. Note that for the MFP driver (printer driver), this is only effective when a USB cable is connected.

- 6 Click the [Set Tray Status] button and select the size of paper that is loaded in each tray.**

Select a tray in the "Paper source" menu, and select the size of paper loaded in that tray from the "Set Paper Size" menu.



If the dual function board is not installed, be sure to configure the above "Set Tray Status" settings, and then when printing specify a tray other than [Auto Select] in "Paper Source" in the [Paper] tab of the printer driver setup screen.

- Click the [OK] button in the "Set Tray Status" window.
- Click the [OK] button in the printer properties window.

INSTALLING ADOBE READER

To view the Online Manual, Acrobat Reader must be installed on your computer. If you do not have Acrobat Reader, follow the steps below to install it.

Windows environment

- 1 Insert the CD-ROM into the CD-ROM drive.**

- 2 Click the [Start] button, click [My Computer] (), and then double-click the [CD-ROM] icon ().**


In Windows 95/98/Me/NT 4.0/2000, double-click [My Computer] and then double-click the [CD-ROM] icon.

- 3 Double-click the [Acrobat] folder and then double-click [ar500enu.exe].**

Follow the on-screen instructions to install Acrobat Reader.

Macintosh environment

- 1 Insert the network expansion kit "Software CD-ROM (1)" into your computer's CD-ROM drive.**

- 2 Double-click the [CD-ROM] icon () on the desktop.**

- 3 Double-click the [Acrobat Reader] folder and then double-click the [English] folder.**

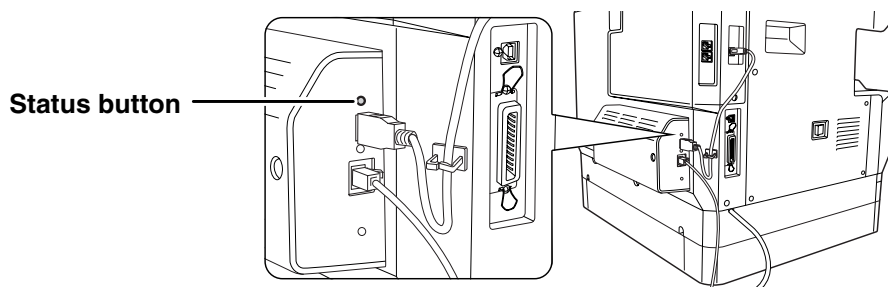
- 4 Double-click the [Reader Installer] icon.**

Follow the on-screen instructions to install the Acrobat Reader.

CHECKING THE IP ADDRESS

There are several settings where the IP address must be entered or checked.

To check the IP address of the machine, hold down the status button on the network expansion kit for at least 2 seconds to print out a Printer Setting List.



HOW TO RESET THE NETWORK EXPANSION KIT

To reset the network expansion kit, power on the machine while holding down the status button on the network expansion kit.

After the network expansion kit is reset, network scanner destination information and scan settings will remain, however, the network settings and network printer settings will revert to the factory default settings.

HARDWARE AND SOFTWARE REQUIREMENTS

3

Before installing the software from the CD-ROM that is provided standard with the machine or the CD-ROM that is provided with the optional network expansion kit (AR-NB3), make sure that your computer satisfies the following requirements.

	Windows (standard machine system)	Windows (options)	Macintosh (options)
Operating system*1	Windows 95*2,3, Windows 98, Windows Me, Windows NT Workstation 4.0 (Service Pack 5 or later)*3,4, Windows 2000 Professional*4, Windows XP Professional*4, Windows XP Home Edition*4, Windows 2000 Server*5, Windows Server 2003*5		Mac OS 8.6 to 9.2.2, 10.1.5, 10.2 to 10.2.8 (excluding 10.2.2), 10.3 to 10.3.4
Computer type	IBM PC/AT compatible computer		An environment on which any of the operating systems listed above can fully operate
	Equipped standard with a USB 2.0*6/1.1*7 port or a bi-directional parallel port (IEEE1284 compliant).	Equipped with a 10Base-T/100Base-TX LAN board	
Display	800 x 600 dots (SVGA), 256 colors (or higher)		
Hard disk free space	150 MB or more		
Other hardware requirements	An environment that allows any of the above operating systems to fully operate		

*1 Printing is not available in MS-DOS mode.

*2 If you are installing the Printer Administration Utility in Windows 95, a system file must be updated before the utility can be installed. For more information, click the "Display Readme" button in the Software Selection window of the installer.

*3 USB is not supported.

*4 Administrator's rights are required to install the software.

*5 The MFP driver, Button Manager, and other software on the "Software CD-ROM (1)" that is provided standard with the machine are not supported.

*6 The machine's USB 2.0 port will transfer data at the speed specified by the USB 2.0 (Hi-Speed) standard only if the Microsoft USB 2.0 driver is preinstalled in the computer, or if the USB 2.0 driver for Windows 2000 Professional/XP that Microsoft provides through "Windows Update" is installed.

*7 Compatible with models preinstalled with Windows 98, Windows Me, Windows 2000 Professional, Windows XP Professional or Windows XP Home Edition, Windows Server 2003, and which are equipped standard with a USB interface.

CONNECTING TO A COMPUTER

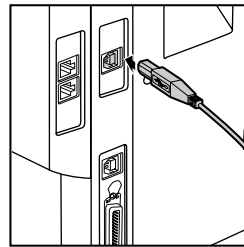
Connecting a usb cable

Please purchase a USB cable (shielded) that complies with the following standard.

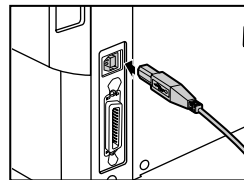
The USB interface on the machine complies with the USB 2.0*/1.1 standard.

* when the dual function board is installed.

USB-2:
USB 2.0 port



USB-1:
USB 1.1 port



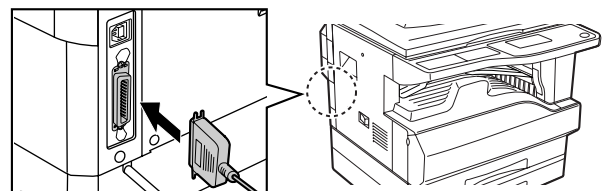
- The machine's USB 2.0 port will transfer data at the speed specified by the USB 2.0 only if the Microsoft USB 2.0 driver is preinstalled in the computer, or if the USB 2.0 driver for Windows 2000 Professional/XP that Microsoft provides through "Windows Update" is installed.
- To obtain the full USB 2.0 data transfer speed, "USB2.0 mode" in the machine's key operator programs must be set to "Hi-Speed". For more information, see the "Key operator's guide".
- Use the machine's "Hi-Speed" mode only when using a computer that is running Windows 2000/XP/Server 2003.
- Even when the Microsoft USB 2.0 driver is used, it may not be possible to obtain full USB 2.0 speed if a PC card supporting USB 2.0 is used. To obtain the latest driver (which may enable a higher speed), contact the manufacturer of your PC card.
- The cable can also be inserted into a USB 1.1 port. However, performance will be the same as USB 1.1.

Connecting a parallel cable

Please purchase a Centronics cable (shielded) that complies with the following standard.

The parallel port on the machine complies with IEEE-STD-1284-1994 ECP.

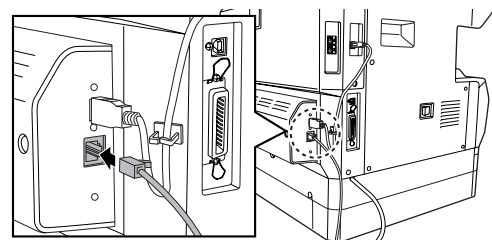
Connector type (on the machine):
36-pin Amphenol female connector



Connecting to a network connector

If the machine will be used as a network computer, read the online manual on the "Network Utilities" CD-ROM that accompanies the network expansion kit (AR-NB3).

Use a network cable that is shielded.





This manual has been printed using a vegetable-based soy oil ink
to help protect the environment.

Printed on 100% post-consumer recycled paper

PRINTED IN JAPAN
2004L DSC1
TINSE1339QSZZ