

VII. Print Server Card User Software

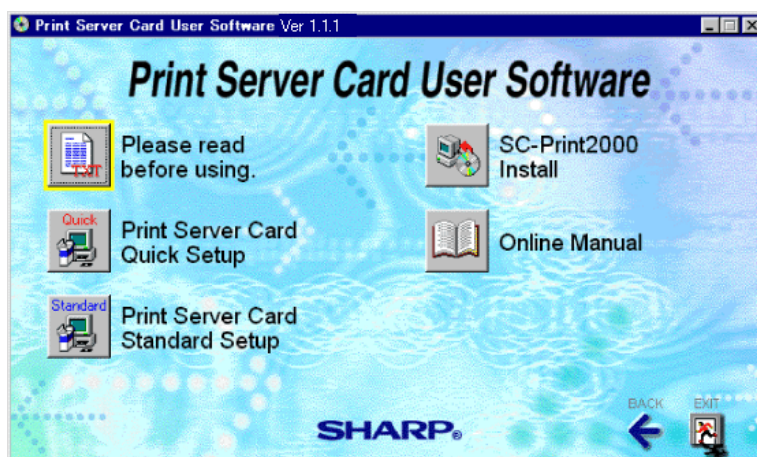
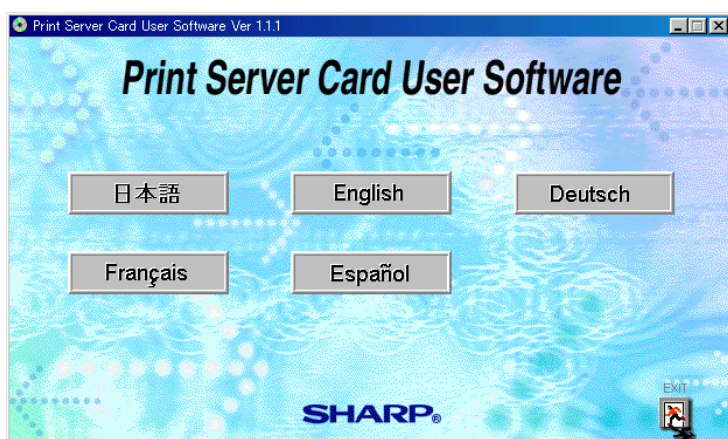
VII. Print Server Card User Software	7-1
Start Print Server Card User Software	7-2
Print Server Card Quick Setup	7-4
Print Server Card Standard Setup	7-5
Load NICManager	7-6
Configure IP Address Manually	7-10
Configure General	7-11
Configure TCP/IP	7-12
Configure NetWare	7-14
Configure AppleTalk	7-17
Configure NetBEUI	7-18
Confirm Setting	7-19
System Status Monitor	7-20
Manage NetWare Object	7-21
Set NICManager	7-23
Install SC-Print2000	7-25
Install SC-Print2000	7-25
Add SC-Print2000 LPR Port	7-26
Add SC-Print2000 IPP Port	7-27
Set Printer Driver	7-29

Print Server Card Users Manual

This chapter explains how to set up Print Server Card in Windows95/98/Me, WindowsNT4.0 and Windows2000/XP environment. If this is the first time to set up, we recommend using the Quick Setup included in the CD-ROM. Quick Setup is a wizard type setup method.

Start Print Server Card User Software

Start the CD-ROM enclosed with Print Server Card in Windows95/98/Me, Windows NT4.0 or Windows2000/XP. The menu will automatically start. Click on the language of your preference. You will see the main menu.



* If the menu does not start automatically, load **AUTORUN.EXE**.

TIP

Print Server Card Users Manual

Please read before using

This manual contains helpful information for using Print Server Card User Software. Please read the information carefully before you use Print Server Card.

Print Server Card Quick Setup

This is the simplest and easiest way to setup Print Server Card and your computer to print to the network printer. It only requires the minimum input to use Print Server Card. We recommend Quick Setup for users who are using Print Server Card for the first time.

Print Server Card Standard Setup

Load or install the NICManager for the advanced and more detailed setup of Print Server Card. We recommend NICManager for network managers or experienced users with knowledge of network environment. Use this instead of Quick Setup for detailed setup such as Subnet Mask.

SC-Print2000 (SC-Print2000 Install)

Installing SC-Print2000 allows your computer to print directly to Print Server Card from Windows95/98/Me. This software creates a new printing environment on your computer.

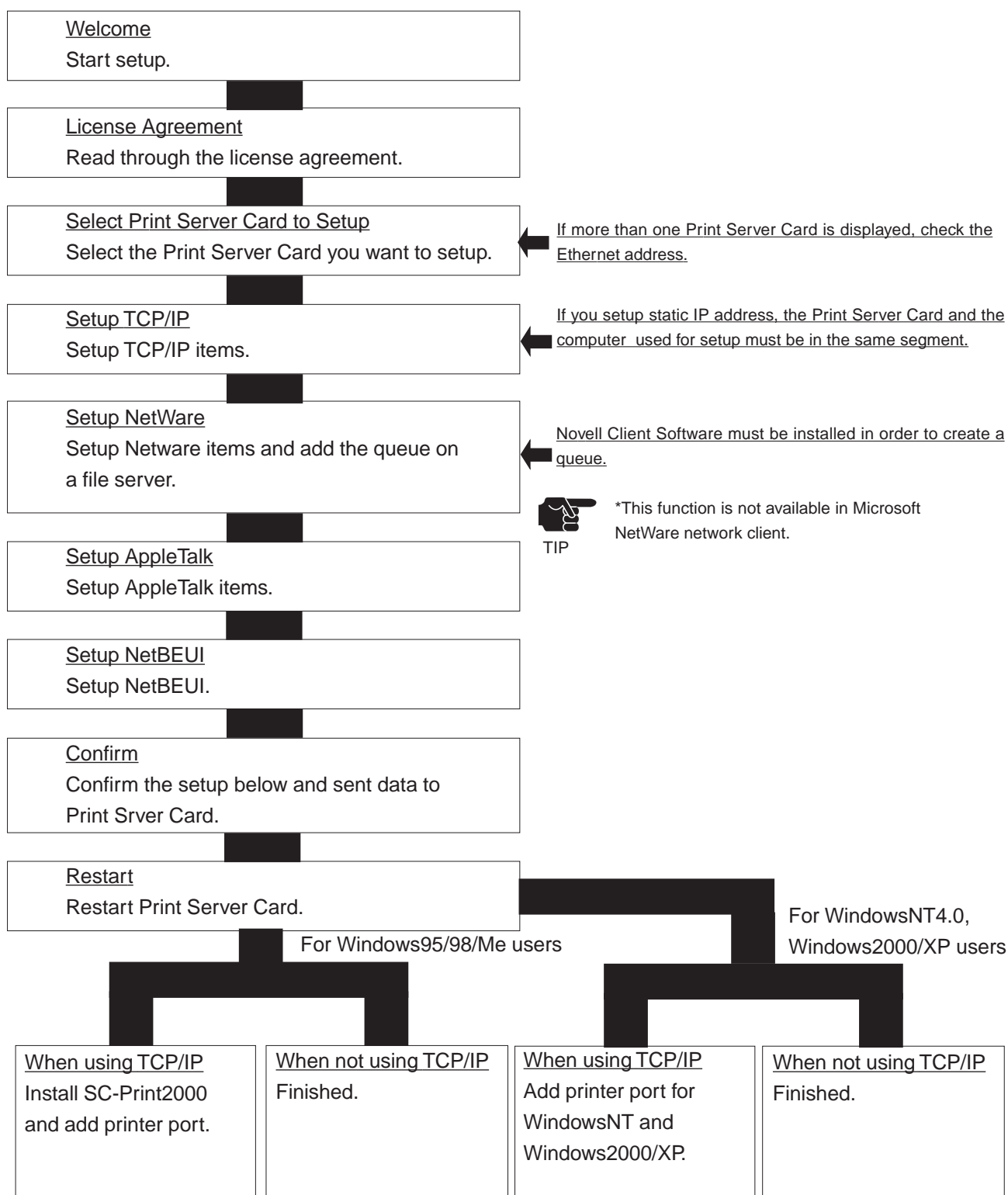
Online Manual

There is an PDF format manual for Print Server Card. This manual uses the Adobe Acrobat Reader to view the information. The installer for Adobe Acrobat Reader will be automatically loaded if your computer does not have it.

Print Server Card Users Manual

Print Server Card Quick Setup

Print Server Card Quick Setup is an installation wizard for Print Server Card. This wizard guides you through configuring Windows and Print Server Card for printing.



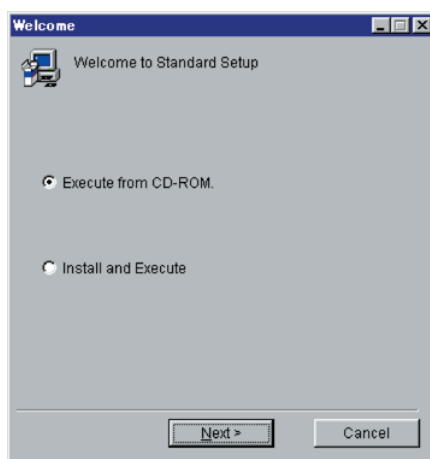
Print Server Card Users Manual

Print Server Card Standard Setup

Print Server Card Standard Setup enables the use of all the functions of the Print Server Card. NICManager can be Installed or executed from the CD-ROM. The wizard installs the NICManager to your computer.



* The environment settings will not be saved if executed from the CD-ROM. We recommend installing NICManager for users who frequently use the tools.



Install

License agreement

Read through the license agreement.

Specify the Destination Folder

Enter the destination folder to install NICManager.

Specify the Register Name in the Start Menu

Enter the name of the NICManager that appears on the start menu.

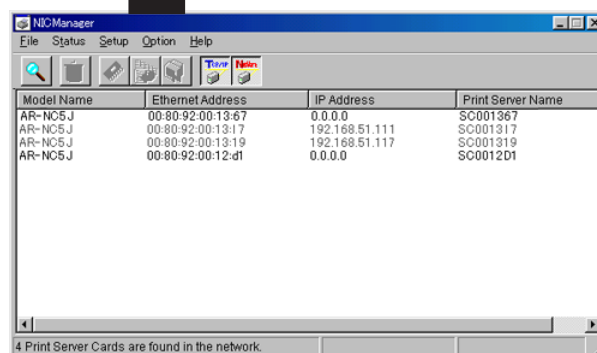
Finish

Select to execute NICManager or not to complete the installation.

Load from the CD-ROM

License agreement

Read through the license agreement.

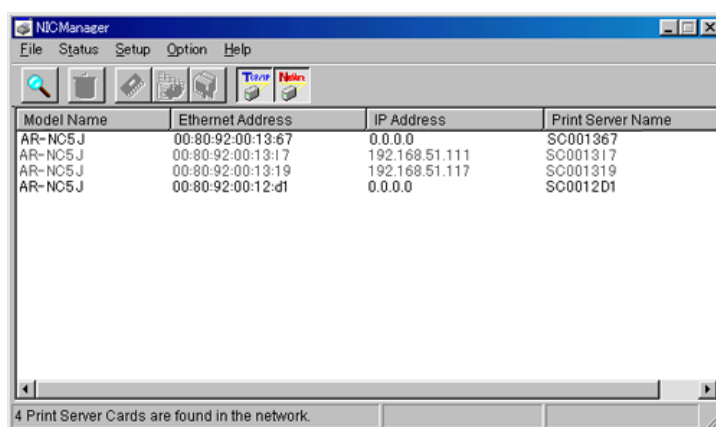


Print Server Card Users Manual

Load NICManager

With NICManager you can set up Print Server Card, see Printer Status Monitor, System Status Monitor and use the Create NetWare Queue Wizard.

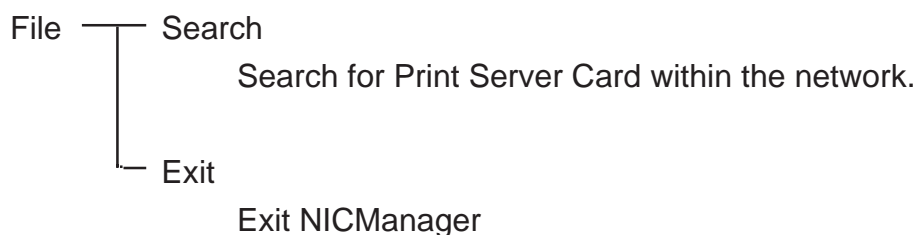
When you start NICManager, it searches and displays Print Server Card existing on the network. The NIC which has not been set is high lighted. Select Print Server Card you want to configure from the list. Using menu bar and tool bar will allow you to set up Print Server Card.



* NICManager automatically detects Print Server Card even when switched on afterwards.

NOTE

<Description of menu bar>





Print Server Card Users Manual

Status	<ul style="list-style-type: none">System Status Display system status.List of Configuration Items Display the information set to Print Server Card.
Setup	<ul style="list-style-type: none">Print Server Card Setup Setup Print Server Card.Setup by HTTP Start WWW browser.Setup by TELNET Setup TELNET.Create NetWare Queue Create NetWare file server queue.Delete NetWare Object Delete NetWare file server object.IP Address Setup Setup IP address manually when it is not indicate in the list.



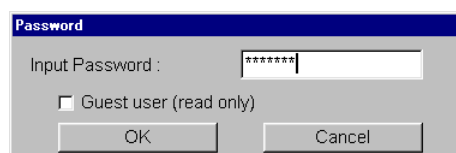
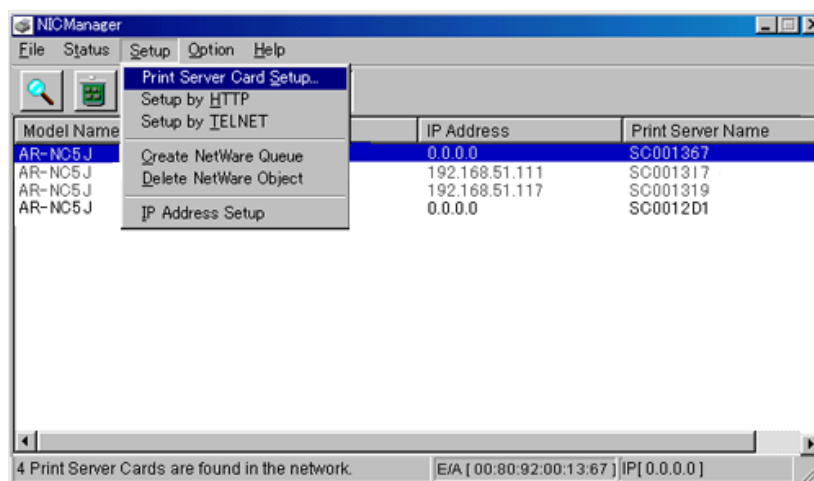
* **Status, Setup** can not be selected if Print Server Card you will configure is not selected in the list.

Print Server Card Users Manual

Option		Search by TCP/IP
		Search by TCP/IP protocol.
		Search with IPX/SPX
		Search by IPX/SPX protocol.
		Environment Setup
		Setup environment for NICManager.
Help		About
		Displays NICManager version information.

Print Server Card Users Manual

From the main menu of the NICManager, go to **Setup** then select **Print Server Card Setup** to configure Print Server Card. You need to type the Password for Print Server Card to open **Print Server Card Setup**.



TIP

- * Password in Factory default is **Sharp**.
- * With **Guest User** rights, you are only able to see to the settings but not configure them.

Print Server Card Users Manual

Configure IP Address Manually

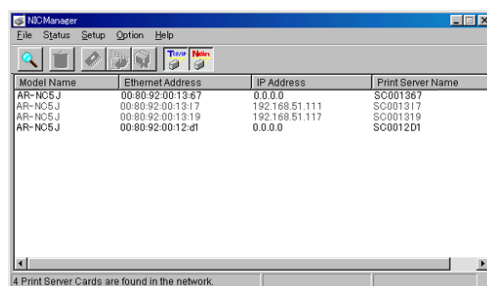
This section explains how to set IP address to Print Server Card.



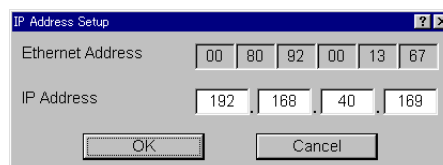
- * Refer to the Ethernet address of the Print Server Card in advance. Ethernet address is 6 sets of the hexadecimal two digit number written on Print Server Card.
(Ex. : 00.80.92.00.13.67)

Example of IP address setup by NICManager below.

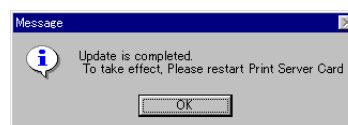
1. Select the Print Server Card you will configure using NICManager from the list. If there are several Print Server Cards, use Ethernet Address to select correct Print Server Card.



2. After selecting **Setup - IP Address Setup**, IP Address Setup utility starts. Assign an IP Address and click on **OK**.



3. Restart the printer to enable the configuration of IP Address.



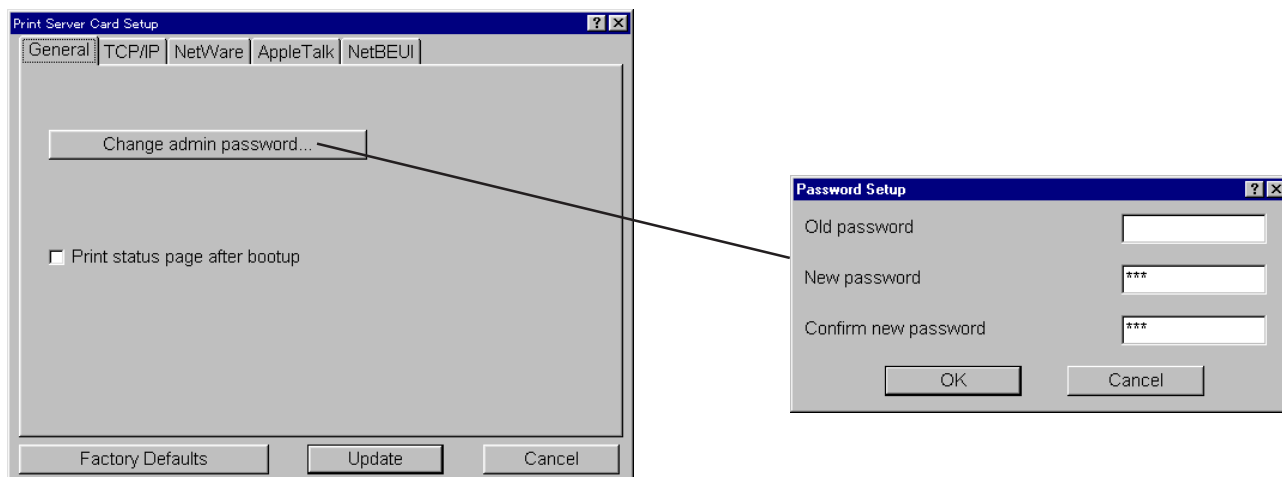
- * If error occurs during the assigning of an IP address, an error message will be displayed. Check the Ethernet address and IP address and try again.



Print Server Card Users Manual

Configure General

Go to menu bar of NICManager and select **Setup - Print Server Card Setup** and move to **General**. This section is a very important part of setup. Check with your network administrator before setting up.



<Explanation for Each Parameter>

Change admin password:

Set the administrator password of Print Server Card in ASCII characters. This password is used as the authentication password to change configurations in Telnet, Web pages and configuration tools.



TIP

* Password in Factory default is **Sharp**.

Old Password/New Password/Confirm New Password:

Setup administrator password in ASCII. This password will be used when logging into Print Server Card by TELNET, Web page, and Setup Tool.

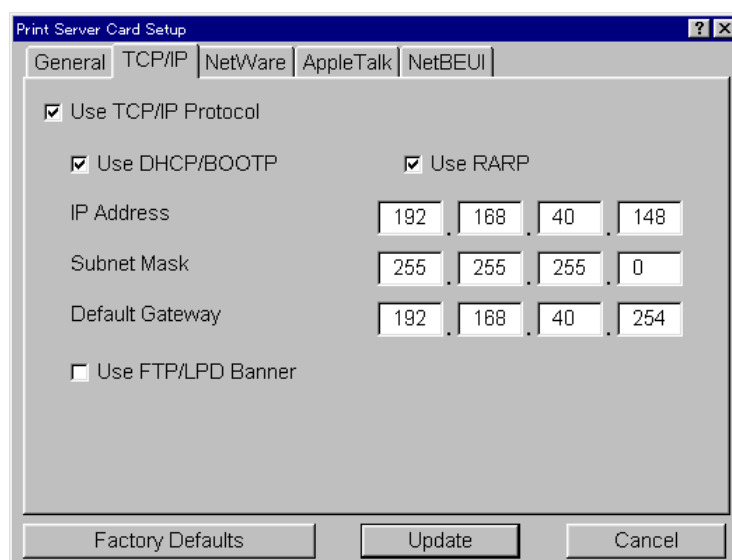
Print status page after bootup:

Select whether to Print status page of Print Server Card or not when the printer starts.

Print Server Card Users Manual

Configure TCP/IP

Go to menu bar of NICManager and select **Setup - Print Server Card Setup** and move to **TCP/IP**. This section is a very important part of set up. Check with your network administrator before setting up.



<Explanation for Each Parameter>

Use TCP/IP Protocol:

Enable or disable TCP/IP protocol. This setting will influence the use of LPR, FTP, TELNET, SNMP, HTTP and Setup Utility (for TCP/IP).

Use DHCP/BOOTP:

Enable or disable DHCP/BOOTP protocol. This is a protocol that acquires IP address from DHCP/BOOTP server when booted. In order to use this function with Print Server Card, a DHCP/BOOTP server must exist in the network and properly set up. Print Server Card will automatically acknowledge DHCP and BOOTP and use the first corresponding IP address.

Use RARP:

Enable or disable RARP. RARP is a protocol that acquires IP address from RARP server when booted. In order to use this function with Print Server Card, a DHCP/BOOTP server must exist within the same subnetwork and properly setup.

IP Address:

Setup IP address. The value must be configured in the format of four part series of numbers separated by decimal points, such as "xxx.xxx.xxx.xxx".

Print Server Card Users Manual

Subnet Mask:

Set up subnet mask. The value must be configured in the format of four part series of numbers separated by decimal points, such as "xxx.xxx.xxx.xxx". The gateway must reside within the same subnetwork as Print Server Card. If you set as 0.0.0.0, this section will be invalid.

Default Gateway:

Set up gateway IP address. The value must be configured in the format of four part series of numbers separated by decimal points, such as "xxx.xxx.xxx.xxx". Gateway must reside within the same subnetwork as PCI-NIC. If you set as 0.0.0.0, this section will be invalid.

Use FTP/LPD Banner:

Set to print banner page when using FTP/LPR printing.

Factory Defaults:

This will set parameters to factory default.

Update:

The new changes will be reflected to Print Server Card.

Cancel:

Cancel changes.

Print Server Card Users Manual

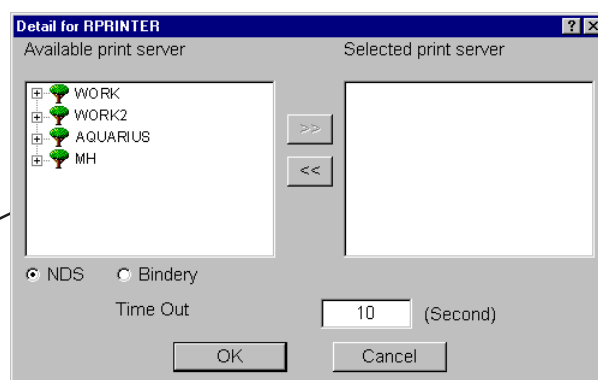
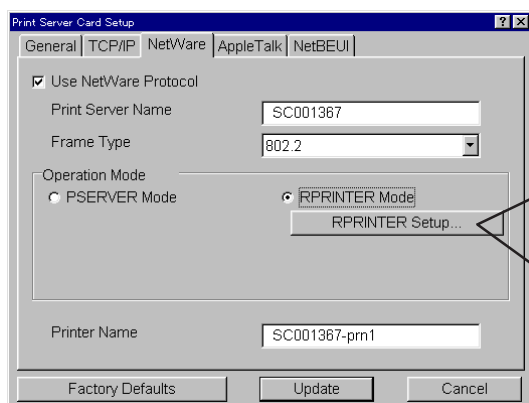
Configure NetWare

Go to menu bar of NICManager and select **Setup - Print Server Card Setup** and move to **NetWare**. This section is a very important part of set up. Confirm with your network administrator before setting up.

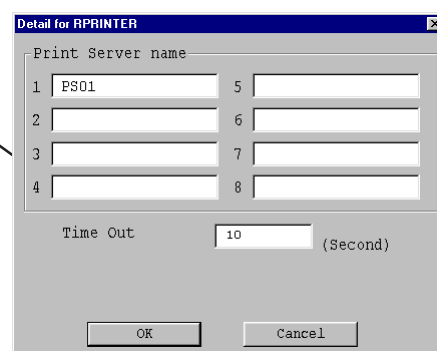


* When setting up in print server mode change operation mode to "PSEVER Mode". When setting up in remote printer mode change operation mode to "RPRINTER Mode".

Remote printer mode



Novell Client software installed



<Explanation for Each Parameter>

- General setup -

Use NetWare protocol:

Enable or disable NetWare. This will influence when using print server, remote printer, Setup Utility (for IPX/SPX).

Print Server Name:

Setup print server name for when Print Server Card is working in print server mode. This name will be used to distinguish within the network when using NetWare protocol. Therefore set up individual name. The name will be used as login name when logging into the NetWare server.

Frame Type:

Setup default frame type used by Print Server Card. When Print Server Card can not operate with the set frame type, it will automatically change to different frame type.

Print Server Card Users Manual

Operation Mode:

Setup operation mode (print server/remote printer) for Print Server Card. When Print Server Card can not operate with the set operation mode, it will automatically change to different operation mode.

Printer Name:

Setup *Printer* name which will be registered to NetWare server. This name must be same as the *Printer* name registered to NetWare server.

-Remote Printer Mode Setup-

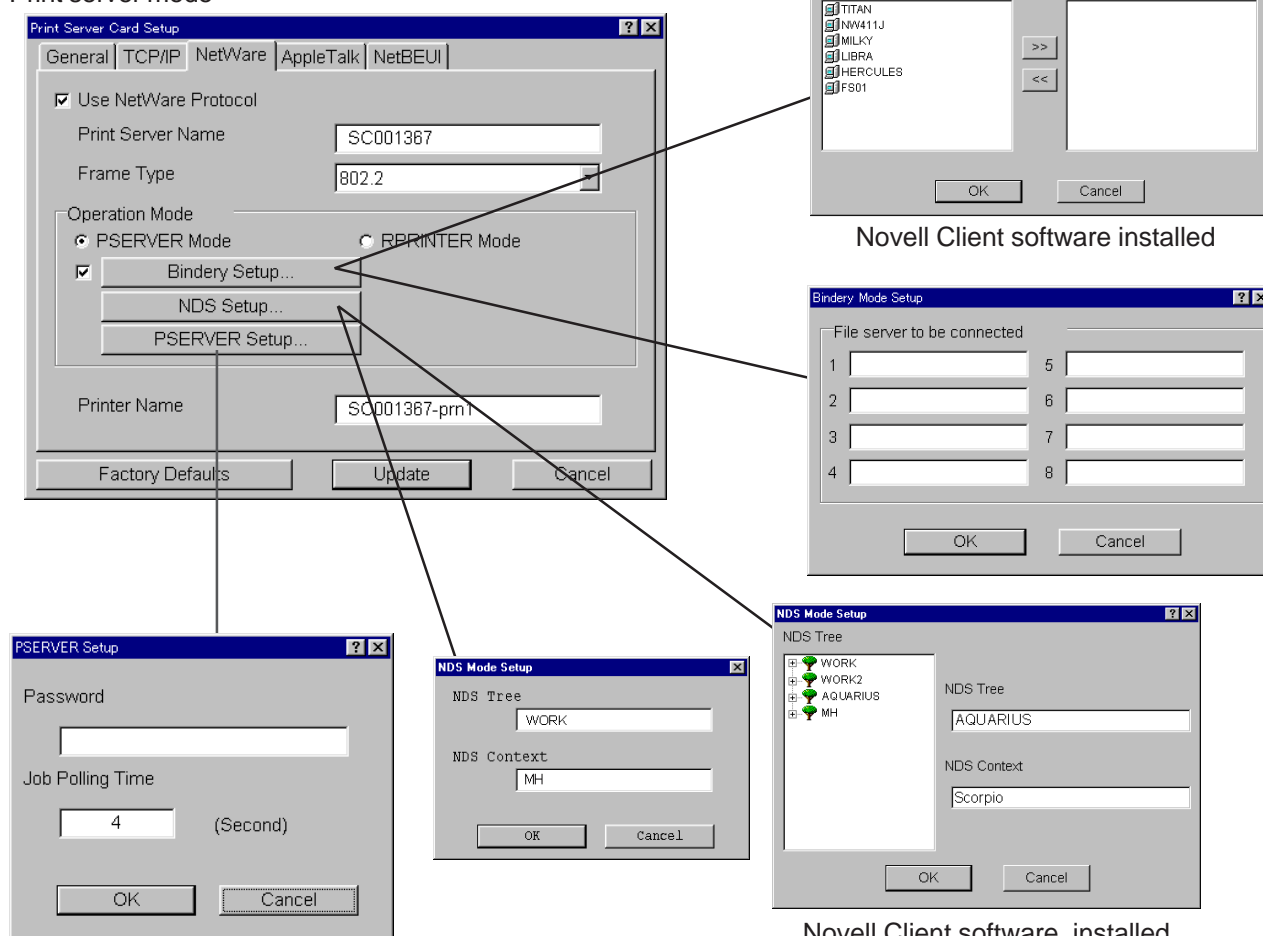
Print server to be connected:

You may define the name of the print server to which the Print Server Card connects. Once you setup the print server name, Print Server Card will connect to it. If this section is left as blank, Print Server Card will automatically search for server and connect to it.

Time Out:

A time in seconds for Print Server Card to recognizes the end of a job in remote printer mode. We recommend default time.

Print server mode



Print Server Card Users Manual

-Print Server Mode Setup-

Bindery Setup:

Enable or disable bindery mode. If you do not check the box, only NDS mode will be used. Unless you want to use only NDS mode, check the box for Bindery Setup.

File server to be connected:

You may define the name of the file server within 31 letters to which the Print Server Card connects. Once you setup the file server name, Print Server Card will connect to it. If this section is left as blank, Print Server Card will automatically search for server and connect to it.

Password:

Set the password for Print Server Card to log in to the file server. The password can be up to 31 letters. If you set password to Print Server Card, you must set the same password to file server (You can set the password to file server by PCONSOLE). When you want Print Server Card to connect to several file servers, all the password must be the same.



TIP

* You can set password to Print Server Card but not to *Print server Information* and still manage to connect and print. However, this is a very special situation and we recommend to put the same password to Print Server Card and to *Prints Server Information*.

Job Polling Time:

Set the interval to check for print jobs. We recommend default time.

NDS Tree:

Specify the NDS tree. Normally, Print Server Card will automatically detect the tree name. However, when there are several trees existing within the network, you must add the name.

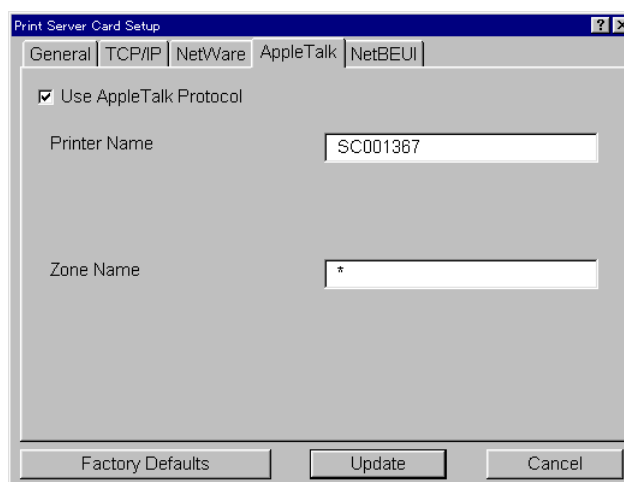
NDS Context:

Specify the context used by NDS in print server mode. Add the context that you created the print server on file server.

Print Server Card Users Manual

Configure AppleTalk

Go to menu bar of NICManager and select **Setup - Print Server Card Setup** and move to **AppleTalk**. This section is a very important part of set up. Confirm with your network administrator before setting up.



<Explanation for Each Parameter>

Use AppleTalk Protocol:

Enable or disable AppleTalk protocol.

Printer Name:

Set up AppleTalk printer name. The name you set here is seen from **Chooser**. Do not add AppleTalk Protocol symbol (=:@*) here.

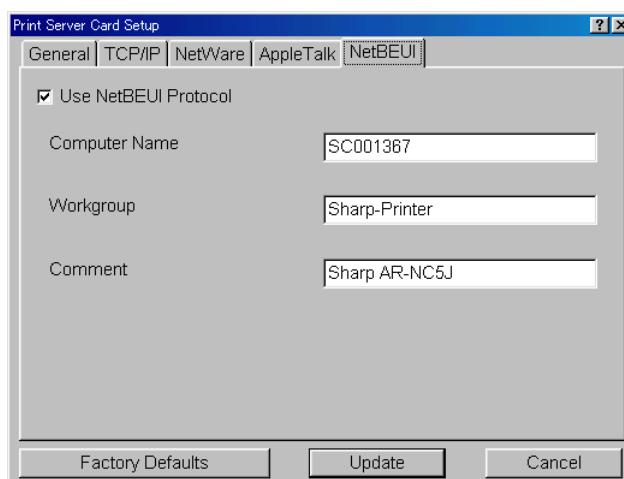
Zone Name:

Set up zone name that Print Server Card belongs. If this is left blank, Print Server Card will automatically belong to zone name where AppleTalk router is set.

Print Server Card Users Manual

Configure NetBEUI

Go to menu bar of NICManager and select **Setup - Print Server Card Setup** and move to **NetBEUI**. This section is a very important part of setup. Confirm with your network administrator before setting up.



<Explanation for Each Parameter>

Use NetBEUI Protocol:

Enable or disable NetBEUI protocol.

Computer Name:

Add computer name. The name you add here will be shown as the computer in Windows Explorer. Make sure you give an unique name.

Workgroup:

Set the workgroup Print Server Card belongs to. Add a default or existing workgroup name. If you add a workgroup name that does not exist, it will not be indicated as workgroup.

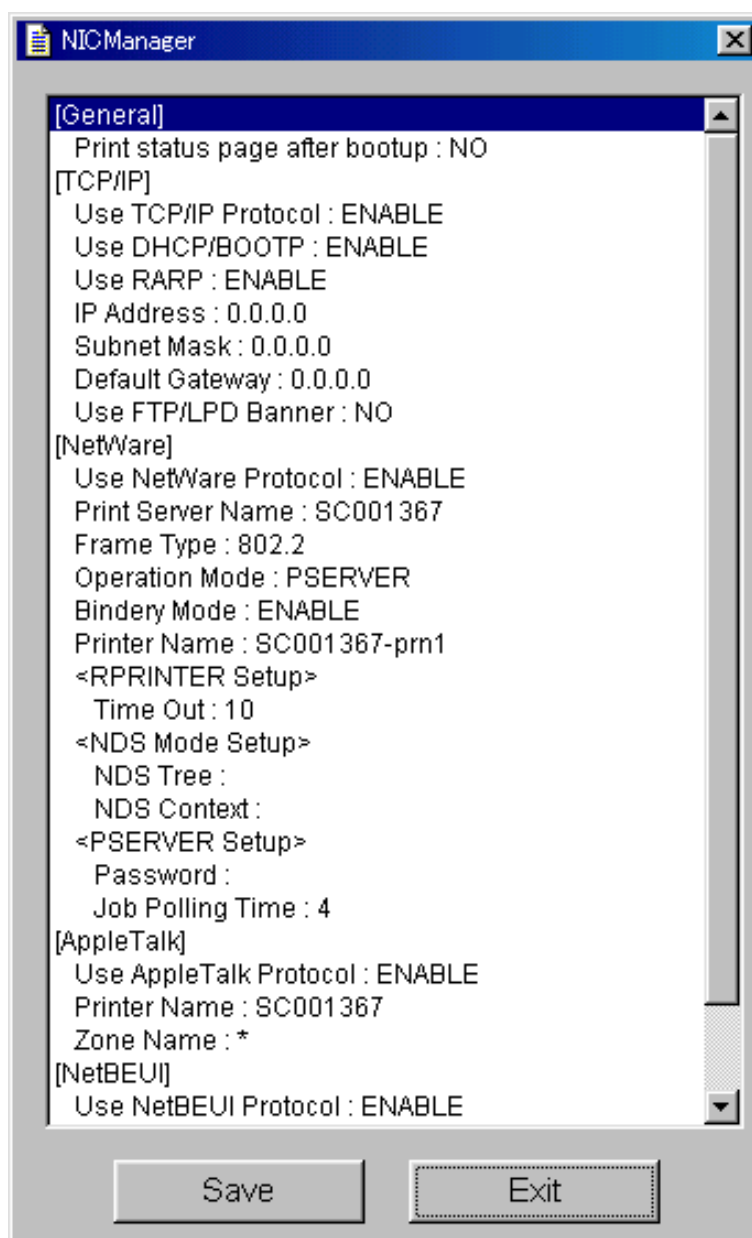
Comment:

Add an explanation for Print Server Card. The explanation here will be shown as a comment in Windows Explorer.

Print Server Card Users Manual

Confirm Setting

Go to menu bar of NICManager and select **Status** and move to **List of Configuration Items**. You can see the list of configuration on Print Server Card. To save configuration, click **Save**.



Print Server Card Users Manual

System Status Monitor

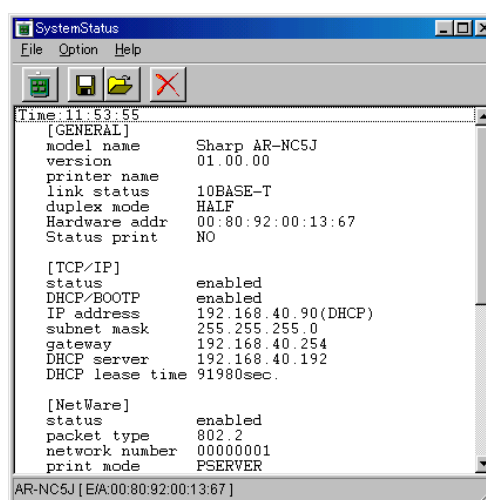
Go to menu bar of NICManager and select **Status** and move to **System Status**. You can see system status monitor. You can find out the status of Print Server Card at real time.



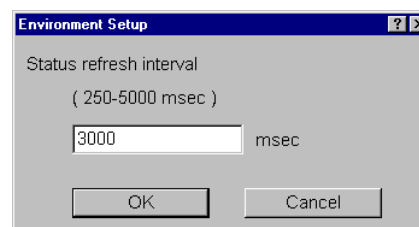
TIP

* Display may differ according to Print Server Card.

- File
 - Update
 - Display update status.
 - Log Open
 - Open the saved log file in Notepad.
 - Log Save
 - Save the contents of System Status displayed in window as log file.
 - Log Clear
 - Clear the display of system Status in window, and obtain new information and show it.
 - Exit
 - Closes System status.



- Option— Environment Setup
 - Set time for updating system status.
- Help — About
 - Printer status version



Print Server Card Users Manual

Manage NetWare Object

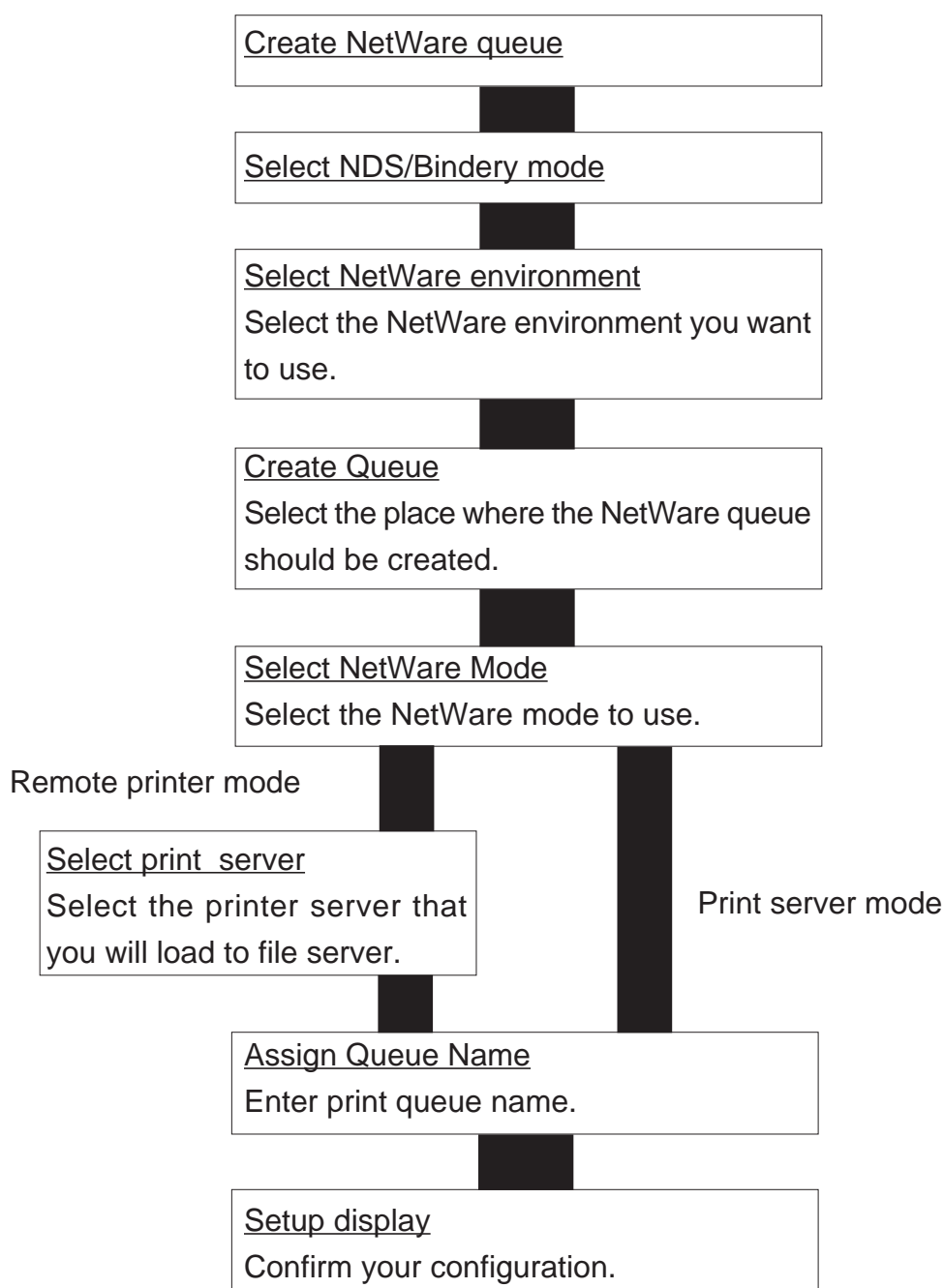
Create NetWare Queue

Go to menu bar of NICManager and select **Setup** and start **Create NetWare Queue**. Wizard will start. You can create NetWare object for Bindery simulation and NDS context mode. Follow the instruction of wizard. Novell NetWare client must be installed to manage NetWare object.



TIP

- * Before you start creating NetWare queue, be sure to set up Print Server Card.
- * This function is not available in Microsoft NetWare network client.



Print Server Card Users Manual

Delete NetWare Object

Go to menu bar of NICManager and select **Setup** and start **Delete NetWare Object**. This will delete the NetWare object you have created.

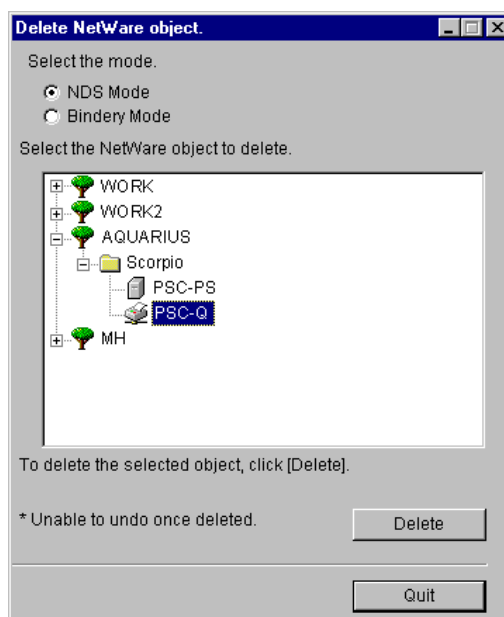
NDS Context Mode

When you select **NDS Mode** you will see the NetWare object created in NDS context mode. Select the object you want to delete and click **Delete**. When you are finished click **Quit**.



TIP

- * If you have not logged into the context, you will need to log in through a **Login Window**.



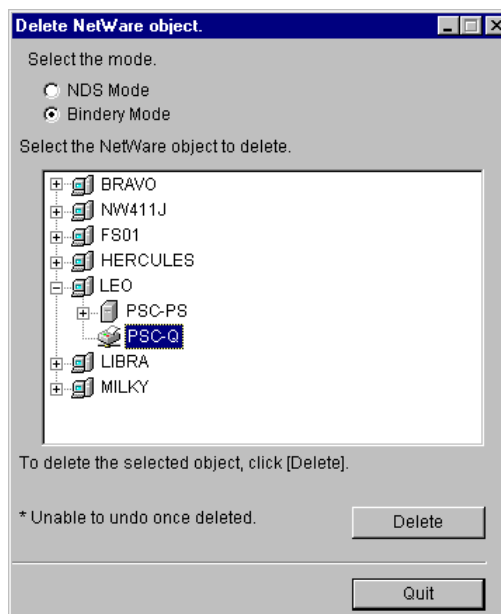
Bindery Emulation Mode

When you choose **Bindery Mode** you will see the NetWare object you have created. Select the object you want to delete and click **Delete**. When you are finished click **Quit**.



TIP

- * If you have not logged into the context, you will need to log in through a **Login Window**.



Print Server Card Users Manual

Set NICManager

Go to menu bar of NICManager and select **Option** and move to **Environment Setup**. If you want to save the new set up, click **OK** if you want to cancel the setup, click **Cancel**.

TCP/IP

In TCP/IP tag, setup the limited broadcast to search for Print Server Card by TCP/IP. Enter the broadcast address in the upper section and click **Add**.



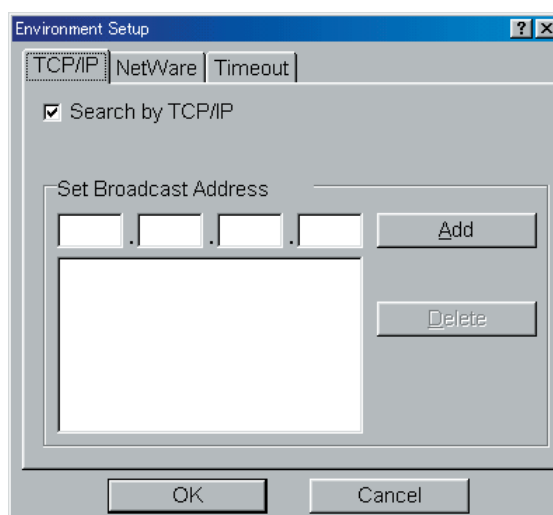
TIP

- * If the **Search by TCP/IP** is not checked, TCP/IP will not be used to search for Print Server Card.



NOTE

- * More than one broadcast IP address can be registered.



NetWare

In NetWare tag setup the network number to search for Print Server Card by NetWare. Enter the NetWare number in the upper section and click **Add**.



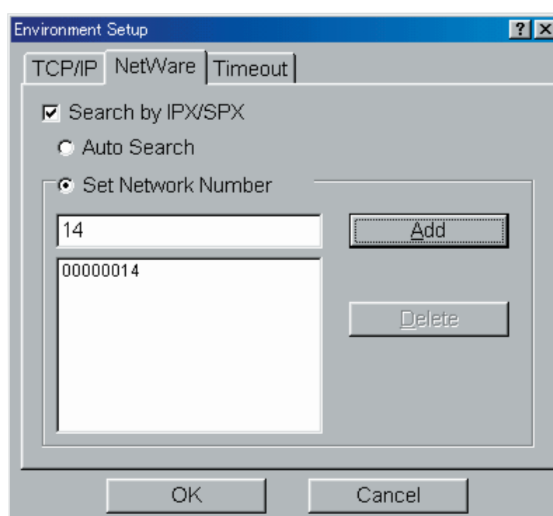
TIP

- * If **Search by IPX/SPX** is not checked, NetWare will not be used for searching Print Server Card.



NOTE

- * Searches all the networks if **Auto Search** is checked.



Print Server Card Users Manual

Timeout

In Timeout configure the item related to the communication with Print Server Card.

- Search Every (20-180 sec)-

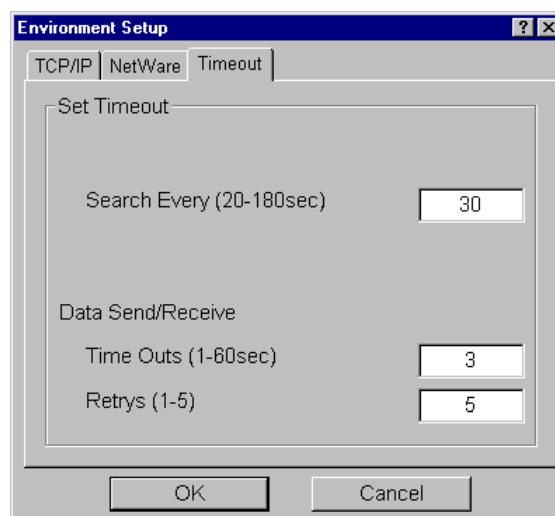
Setup the time (Sec.) to wait for the reply from Print Server Card when the NICManager searches for Print Server Card.

- Time Outs -

Setup the timeout time (Sec.) for the communication between NICManager and Print Server Card.

- Retrys -

Setup the number of retries (Times) for the communication between the NICManager and Print Server Card.



Print Server Card Users Manual

Install SC-Print2000

In order to print from Windows 95/98/Me using TCP/IP protocol, SC-Print2000 is necessary. SC-Print2000 has LPR client and IPP client exclusively for Print Server Card.



NOTE

* This software can be installed by using **Quick Setup**.



TIP

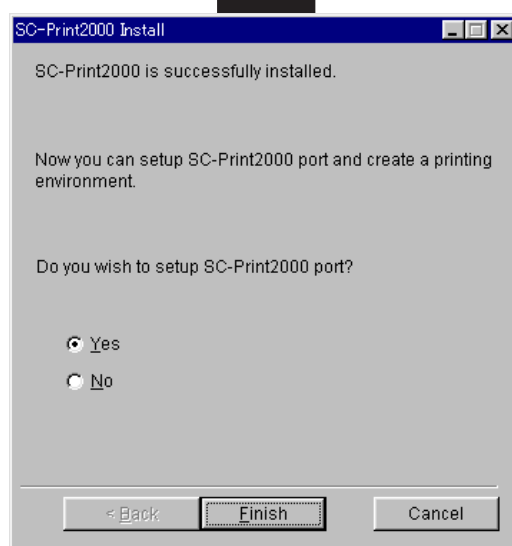
* You do not need to use the SC-Print2000 when your OS is Windows NT4.0, or Windows2000/XP, and when you print using NetBEUI in Windows95/98/Me.

Install SC-Print2000

Install according to install wizard. After installation is complete, you will see add printer port wizard in Windows 95/98/Me.

If you want to add printer port in Windows95/98/Me, click **Yes**. If you click yes, **Wizard to add SC-Print2000 Port** will start. If you click **No**, you will exit the program.

Installs SC-Print2000.



Print Server Card Users Manual

Add SC-Print2000 LPR Port

This section explains how to setup SC-Print2000 for LPR function.

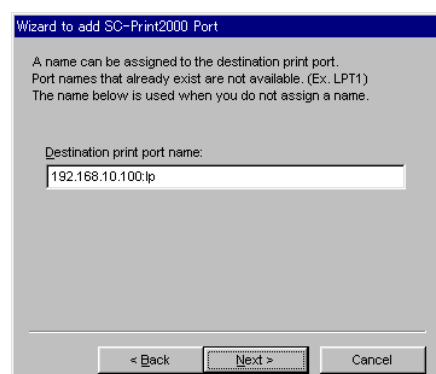
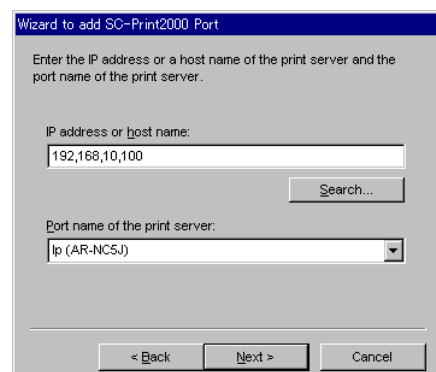
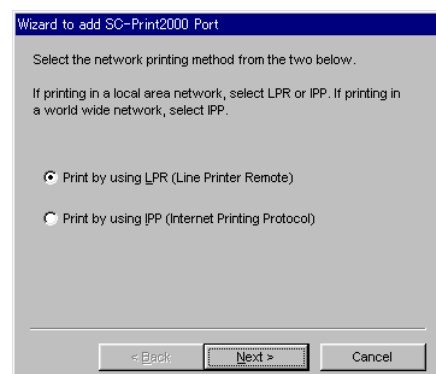
1. Go to **Start - Program** and select **Add SC-Print2000 Port** in **SC-Print2000**. You will see **Wizard to add SC-Print2000 port**.
2. Select **Print by using LPR** (Line Printer Remote) and click **Next**. Click **Search**. You will see the list of print server in the network. Highlight Print Server Card and click **OK** then **Next**.



NOTE

- * The IP address assigned in Quick Setup will be shown, if the wizard booted after Quick Setup.

3. By default, the "IP address : lp" will automatically added in the **Destination print port name** but you can change to the name of your choice. Click **Next**. You will see the list of changes. Confirm and click **Finish**.



Print Server Card Users Manual

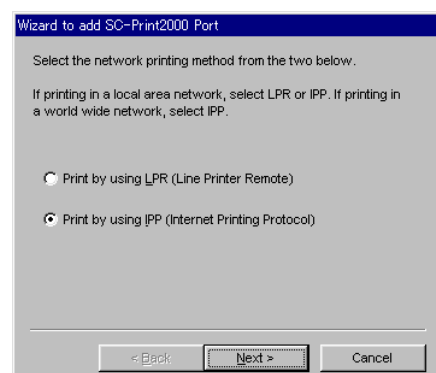
Add SC-Print2000 IPP Port

This section explains how to print using IPP function of SC-Print2000.

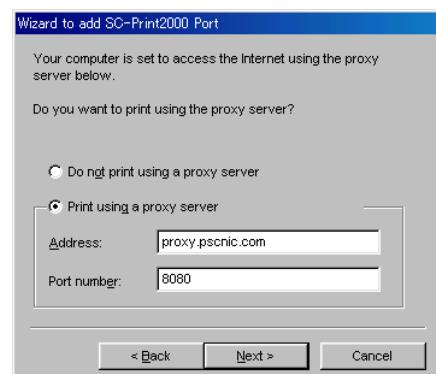


- * IPP function of Print Server Card is an IPP (Internet Printing Protocol) Printing Function Client Software. You can print out via the internet.

1. Go to **Start - Program** and select **Add SC-Print2000 Port** of **SC-Print2000**. Wizard will start.



2. Select **Print by using IPP**. Click **Next**. Select either **Do not print using a proxy server** or **Print using a proxy server**.



- * If you select to print using proxy server, type in proxy server address and port number. If you have Internet Explorer4/5 already installed and it is set to access internet via LAN, this section will automatically be set to the parameter of Internet Explorer.

Print Server Card Users Manual

- For **Printer URL**, add the URL for Print Server Card. The IPP Printer-URL for Print Server Card is "/ipp" or "/ipp/lp".

Ex. If the URL is "psc.nic.com"

`http://psc.nic.com:631/ipp/lp`

Ex. If the IP address is "192.168.10.100"

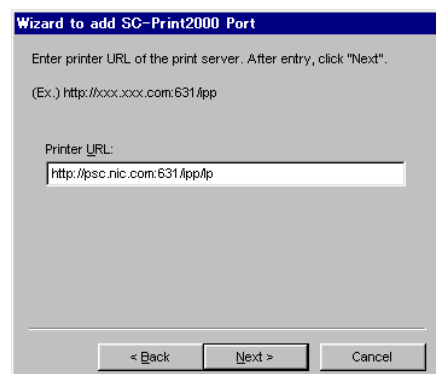
`http://192.168.10.100:631/ipp/lp`



NOTE

* The IP address assigned in Quick Setup will be shown, if the wizard booted after Quick Setup.

- Print Server Card will be searched after adding the URL. At **Destination print port name**, a printer URL will be added as a default. You may change the name to your choice. Continue with the set up, confirm the parameter and click **Finish**.



Print Server Card Users Manual

Set Printer Driver

This section explains how to set printer drive in Windows 95/98/Me.

1. Go to **Start - Setting** and open **Printer**. Open the property of the printer you want to set. Go to **Details** and add the printer port you have created with **Wizard to add SC-Print2000 port**.

Ex. LPR mode

```
192.168.10.100:lp (SC-Print2000 LPR Port)
```

Ex. IPP mode

```
http://192.168.10.100:631/ipp/lp (SC-Print2000 IPP Port)
```



- * If you get an error message in regards with bidirectional printing, put a check in the box indicating no message next time and continue with printing.