

# III. Installation in a Windows Environment

This chapter explains how to print in Microsoft Windows95, Windows98, WindowsMe, Windows NT4.0, Windows2000, WindowsXP environment using TCP/IP protocol and NetBEUI.



\* Use the printer driver for Microsoft Windows95, Windows98, WindowsMe and Windows NT4.0, Windows2000/XP.

TIP

III. Installation in a Windows Environment .....	3-1
Print in Windows95/98/Me Using TCP/IP .....	3-3
Setup Network .....	3-3
Setup Print Server Card .....	3-4
Adding a LPR Port of SC-Print2000 .....	3-6
Adding an IPP Port of SC-Print2000 .....	3-8
Print in WindowsNT4.0 Using TCP/IP .....	3-10
Setup Network .....	3-10
Setup Print Server Card .....	3-12
Print Using LPR on WindowsNT4.0 .....	3-14
Print in Windows2000/XP Using TCP/IP .....	3-15
Setup Network .....	3-15
Setup Print Server Card .....	3-16
Print Using Standard TCP/IP Port of Windows 2000/XP .....	3-18
Print from LPR in Windows2000/XP .....	3-22
Adding an IPP Port of Windows2000/XP .....	3-24
Print in Windows95/98/Me Using NetBEUI .....	3-26
Setup Network .....	3-26

Setup Print Server Card .....	3-27
Add Printer .....	3-28
Print in WindowsNT4.0 Using NetBEUI .....	3-29
Setup Network .....	3-29
Setup Print Server Card .....	3-30
Add Printer .....	3-31
Print in Windows2000 Using NetBEUI .....	3-32
Setup Network .....	3-32
Setup Print Server Card .....	3-33
Add Printer .....	3-34

# Print Server Card Users Manual

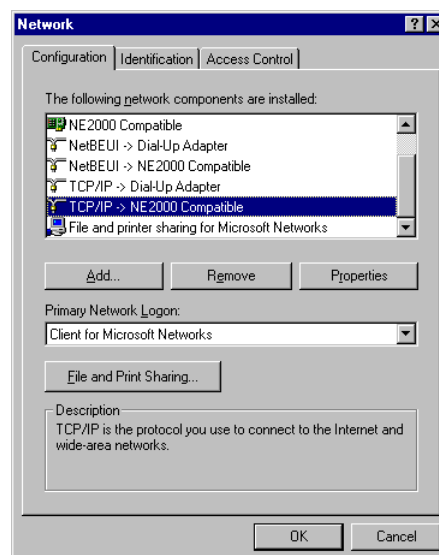
## Print in Windows95/98/Me Using TCP/IP

You need the accessory SC-Print2000 to print from Windows95/98/Me using Print Server Card with TCP/IP protocol. SC-Print2000 contains LPR Client (exclusively for Print Server Card) and IPP Client. This section explains how to print using LPR Client and IPP Client of SC-Print2000.

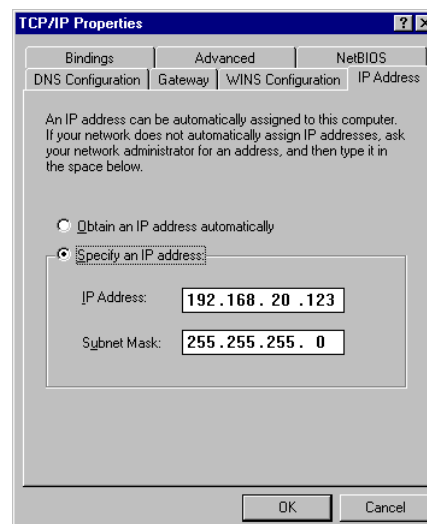
### Setup Network

Be sure to check that the TCP/IP is added to **Network** in the following way.

1. Go to **Start - Setting** and select **Control Panel**. Double click the **Network** icon of Control Panel. Confirm that the TCP/IP protocol is included in “The following network components are installed”.



2. Confirm the properties of TCP/IP.



# Print Server Card Users Manual

## Setup Print Server Card

Use NICManager of Print Server Card User Software to set up Print Server Card. Start NICManager. You will see the list of Print Server Card in the network. You can search by going to **File** and selecting **Search**.



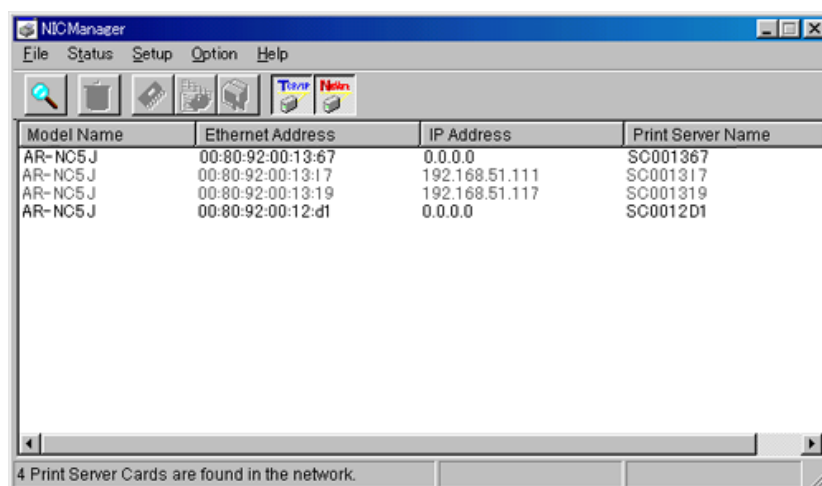
NOTE

- \* The NIC which has not been set is high lighted in the list.
- \* You can install NICManager from Standard Setup of the CD-ROM.
- \* Some parameters can be set from a printer. Please refer to the manuals of printer for the details.

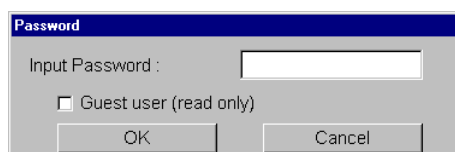


TIP

- \* Before setting Print Server Card, check the Ethernet address of Print Server Card. Ethernet address is 6 sets of the hexadecimal two digit number written in the seal put on Print Server Card.  
(Ex. : 00.80.92.00.13.67)



1. Select Print Server Card you want to set up from the list. Go to **Setup** and select **Print Server Card Setup**.  
**Password** will be shown. You need to type a password and click **OK**. **Print Server Card Setup** will open.

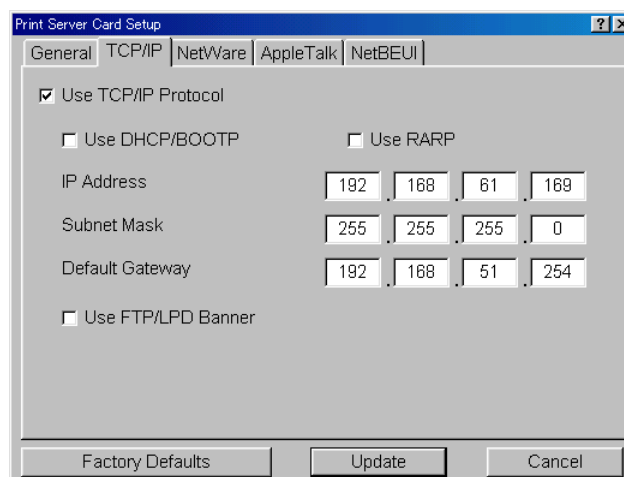


TIP

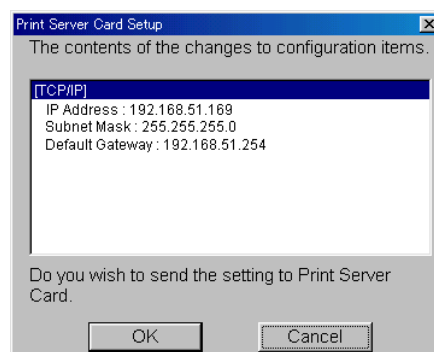
- \* Password in Factory default is **Sharp**.
- \* You can see the configuration by selecting **Guest user** but you can not change the parameters.

# Print Server Card Users Manual

2. Go to **TCP/IP** of Print Server Card Setup. This section is a very important part of setup when using in TCP/IP environment. Check with your network administrator before setting up. After all the parameters are filled, click **Update**.



3. The changes will be displayed. Confirm and click **OK**.



4. You will see the message **Restart Print Server Card**. Restart the printer.
5. Search with NICManager. Be sure that the Print Server Card with the new configuration is displayed. Configuration is complete.



TIP

\* You can not find Print Server Card while it is being reset. Please wait a moment and search again.

# Print Server Card Users Manual

## Adding a LPR Port of SC-Print2000

This section explains how to setup and print using LPR of SC-Print2000. The explanation below assumes that you have already installed SC-Print2000 in Windows95/98/Me on your computer. For detailed information on SC-Print2000, refer to chapter VII.



\*SC-Print2000 LPR printing is exclusively for Print Server Card.

### Add Printer Port

1. Go to **Start - Program** and select **Add SC-Print2000 Port** in **SC-Print2000**. You will see **Wizard to add Print Server Card port**.
2. Select **Print by using LPR** and click Next. Click **Search**. You will see the list of print servers in the network.
3. Highlight Print Server Card and click **Next**. By default, the **IP address( or host name) : Ip** will be automatically added in the **Destination print port name** but you can change to the name of your choice. Click **Next**. You will see the list of changes. Confirm and click **Finish**.



\* The name in **Destination print port name** will be used as the printer port name when setting printer driver. You must set an unique name.

# Print Server Card Users Manual

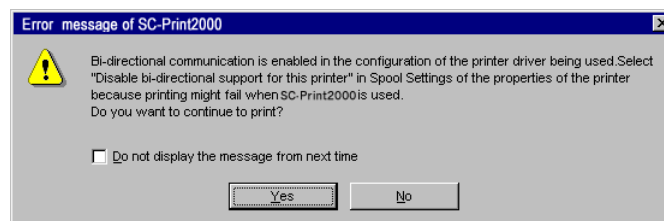
## Install Printer Driver

1. Go to **Start - Setting** and open **Printer**. Click **Add Printer** and start the wizard.
2. Select **Local Printer**.
3. The list of printer drivers will appear. Select the correct printer driver then click **Next**.
4. Select LPR port you created from the **Available Ports** list. Click **Next**.
5. Follow the instruction. Try test print.



TIP

- \* If you get an error message in regards with bi-directional printing, put a check in the box indicating no message from next time and continue with printing.



NOTE

- \* To use the already installed printer driver open the properties of the printer. At **Detail**, select the printer port you created with the SC-Print2000 LPR port from the list.

# Print Server Card Users Manual

## Adding an IPP Port of SC-Print2000

This section explains how to print using IPP function of SC-Print2000. The explanation below assumes that you have already installed SC-Print2000 in Windows95/98/Me to your computer. For detailed information on SC-Print2000, refer to chapter VII.



- \* IPP function of Print Server Card is a IPP (Internet Printing Protocol) Printing Function Client Software. You can print out via the internet.



- \* IPP function of SC-Print2000 is exclusive for Windows95/98/Me.

### Add Print Port

1. Go to **Start - Program** and select **Add SC-Print2000 Port** of **SC-Print2000**. Wizard will start.
2. Select **Print by using IPP**. Click **Next**. Select either "Do not print using a proxy server" or "Print using a proxy server".



- \* If you select to print using proxy server, type in proxy server address and port number. If you have Internet Explorer4/5 already installed and is set to access internet via LAN, this section will automatically be set to the parameter of Internet Explorer.
- \* If you disabled the Internet Explorer to access the internet using proxy server, you will be asked to select either to connect using modem and telephone line or LAN.

3. For **Printer URL**, add the URL for Print Server Card or the IP address.

- \* If the URL is "printer.abcd.com"

`http://printer.abcd.com:631/ipp/lp`

or `http://printer.abcd.com:631/ipp`

- \* If the IP address is "192.168.10.100"

`http://192.168.10.100:631/ipp/lp`

or `http://192.168.10.100:631/ipp`

4. Print Server Card will be searched for after adding the URL. At **Destination print port name**, a printer URL will be added as default. You may change the name if you choose. Continue with the set up, confirm the parameters and click **Finish**.



- \* The name in **Destination print port name** will be used as the printer port name when setting printer driver. You must set an unique name.



# Print Server Card Users Manual

## Install Printer Driver

1. Go to **Start - Setting** and open **Printer**. Click **Add Printer** and start the wizard.
2. Select **Local Printer**.
3. The list of printer drivers will appear. Select the correct printer driver then click **Next**.
4. Select IPP port you created from the **Available Ports** list. Click **Next**.
5. Follow the instruction. Try test print.



TIP

- \* If you get an error message in regards with bi-directional printing, put a check in the box indicating no message from next time and continue with printing.



NOTE

- \* To use the printer driver already installed, open the property of the printer and at **Detail**, select the printer port you created with the SC-Print2000 IPP port from the list.

# Print Server Card Users Manual

## Print in WindowsNT4.0 Using TCP/IP

This section explains how to print using TCP/IP protocol from Windows NT4.0.



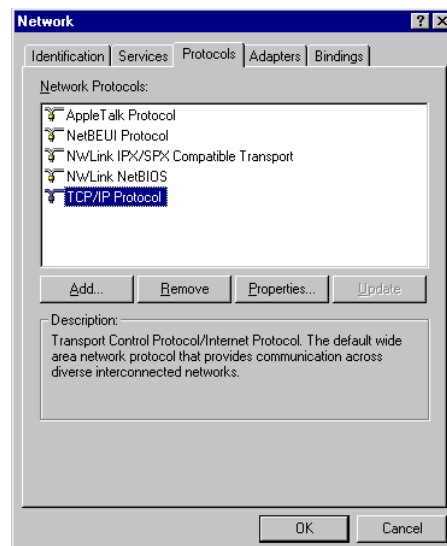
\* Be sure to use the correct printer driver for Windows NT4.0

TIP

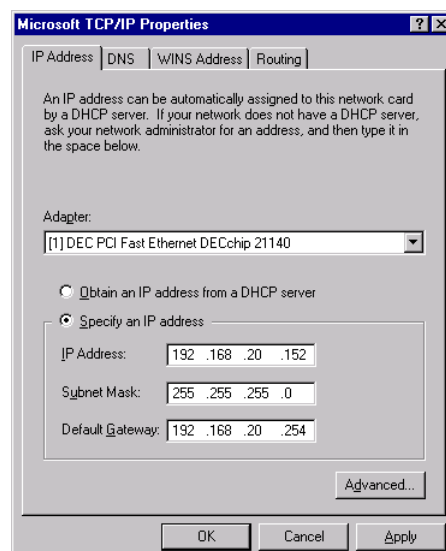
### Setup Network

Be sure to check TCP/IP is added to **Network** and **Microsoft TCP/IP Printing** in the following way.

1. Double click the **Network** icon in **Control Panel** and confirm that TCP/IP protocol is added to the **Protocol**.

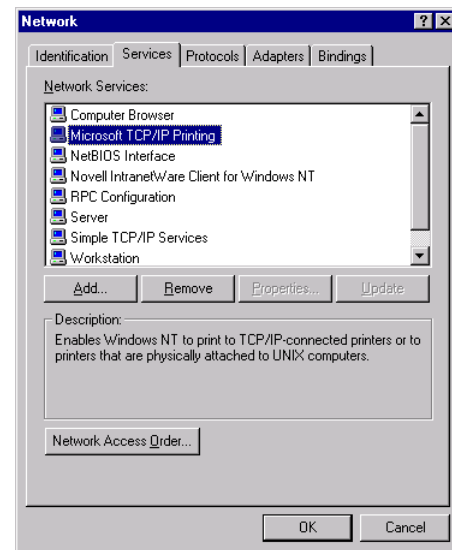


2. Confirm the properties of TCP/IP.



# Print Server Card Users Manual

3. Be sure that the **Microsoft TCP/IP printing** service is added.



# Print Server Card Users Manual

## Setup Print Server Card

Use NICManager of Print Server Card User Software to set up Print Server Card. Start NICManager. You will see the list of Print Server Card in the network. You can search by going to **File** and selecting **Search**.



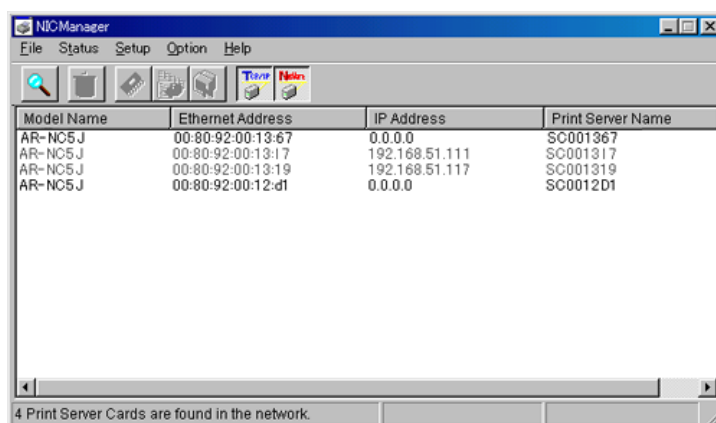
NOTE

- \* The NIC which has not been set is high lighted in the list.
- \* You can install NICManager from Standard Setup of the CD-ROM.
- \* Some parameters can be set from a printer. Please refer to the manuals of printer for the details.



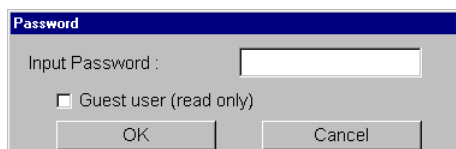
TIP

- \* Before setting Print Server Card, check the Ethernet address of Print Server Card. Ethernet address is 6 sets of the hexadecimal two digit number written in the seal put on Print Server Card.  
(Ex. : 00.80.92.00.13.67)



1. Select the Print Server Card you want to set up from the list. Go to **Setup** and select **Print Server Card Setup**.

**Password** will be shown. You need to type a password and click **OK**. **Print Server Card Setup** will open.

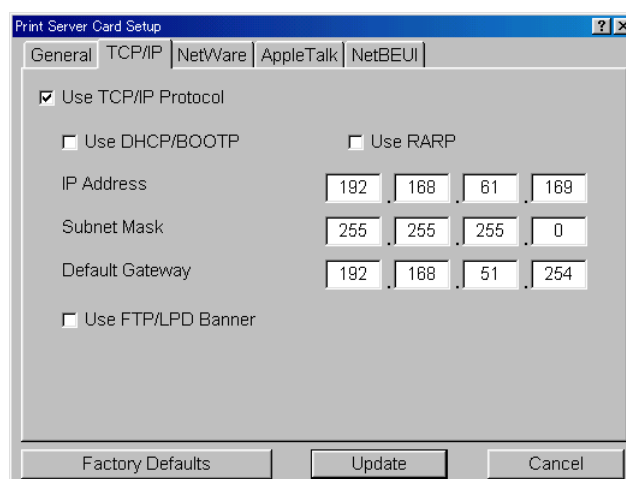


TIP

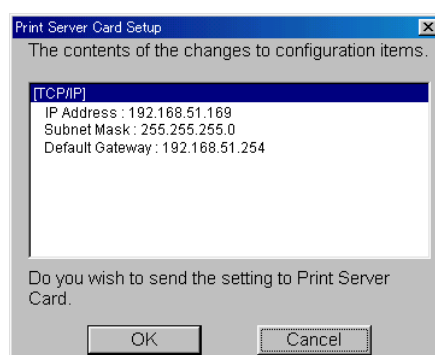
- \* Password in Factory default is **Sharp**.
- \* You can see the configuration by selecting **Guest user** but you can not change the parameter.

# Print Server Card Users Manual

2. Go to **TCP/IP** of Print Server Card Setup. This section is a very important part of set up in TCP/IP environment. Confirm with your network administrator before setting up. After all the parameters are filled, click **Update**.



3. The changes will be displayed. Confirm and click **OK**.



4. You will see the message **Restart Print Server Card**. Restart the printer.
5. Search with NICManager. Be sure that the Print Server Card with the new configuration is displayed. Configuration is complete.



TIP

\* You can not search for Print Server Card while it is being reset. Please wait a moment and search again.

# Print Server Card Users Manual

## Print Using LPR on WindowsNT4.0

1. Go to **Control Panel** and open **Printer**. Click **Add printer**. You will see the wizard.
2. Select **My computer** then click **Next**.
3. Click **Add port** and create a new port. If you have already created port when you installed Print Server Card, continue and choose the port.
4. Select **LPR Port** for **Available ports** and click **New port**.
5. Add IP address of Print Server Card to Name or address of server providing lpd of **Add LPR compatible printer** and Print Server Card's port name "lp" to Name of printer or print queue on that server. Then click **OK**.
6. The list of usable printer port will appear. Click **Close**. The name will be added to the usable printer port. Select the appropriate port then click **Next**.
7. Select the printer driver according to your printer. Then click **Next**.
8. Add the printer name that will be used. You may change the name to your preference. Then click **Next**.
9. You can select to share the printer. If you want to share the printer, add the printer name of your choice. You do not need to do anything to "*Select the operating system of all computers that will.....*". Click **Next**.
10. Try the test page printing.

# Print Server Card Users Manual

## Print in Windows2000/XP Using TCP/IP

This section explains how to print from Windows2000/XP using TCP/IP protocol.

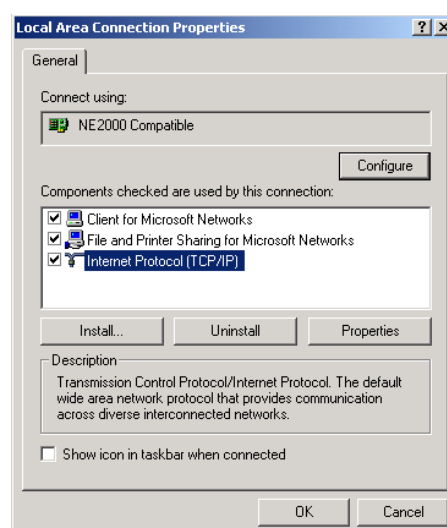


\* Be sure to use the correct printer driver for Windows2000/XP

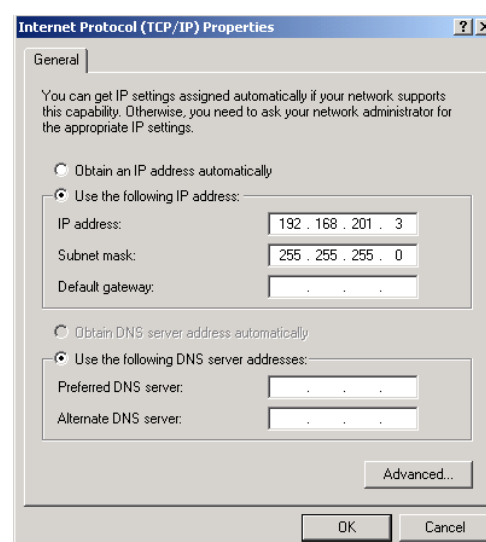
### Setup Network

Be sure to check that the "TCP/IP" is added to **Network** in the following way.

1. Open properties of **Local Area Connection** in Control Panel - **Network and Dial up** and confirm **TCP/IP** protocol is added.



2. Confirm the properties of **TCP/IP**.



\*You do not need to add the "Microsoft TCP/IP Printing " service on Windows2000/XP.

# Print Server Card Users Manual

## Setup Print Server Card

Use NICManager of Print Server Card User Software to set up Print Server Card. Start NICManager. You will see the list of Print Server Card in the network. You can search by going to **File** and selecting **Search**.



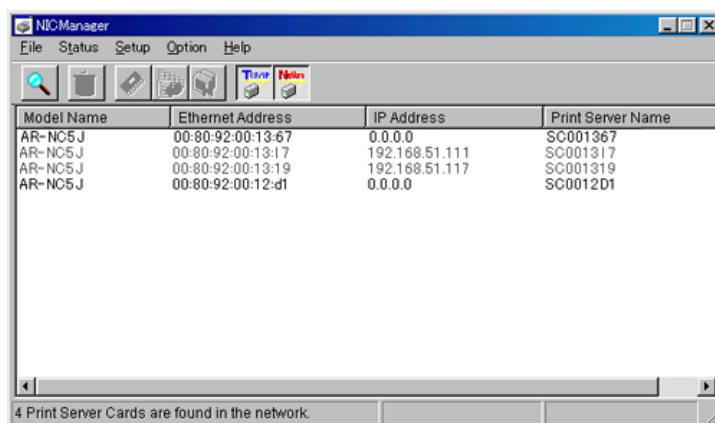
NOTE

- \* The NIC which has not been set is high lighted in the list.
- \* You can install NICManager from Standard Setup of the CD-ROM.
- \* Some parameters can be set from a printer. Please refer to the manuals of printer for the details.

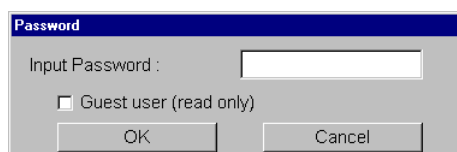


TIP

- \* Before setting Print Server Card, check the Ethernet address of Print Server Card. Ethernet address is 6 sets of the hexadecimal two digit number written in the seal put on Print Server Card.  
(Ex. : 00.80.92.00.13.67)



1. Select the Print Server Card you want to set up from the list. Go to **Setup** and select **Print Server Card Setup**. **Password** will be shown. You need to type a password and click **OK**. **Print Server Card Setup** will open.



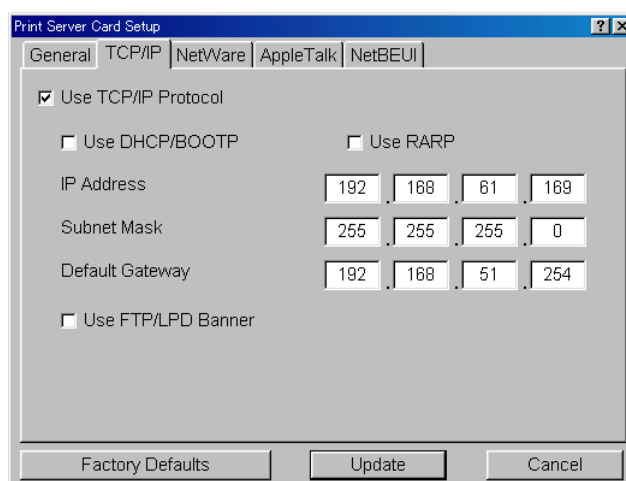
TIP

- \* Password in Factory default is **Sharp**.
- \* You can see the configuration by selecting **Guest user** but you can not change the parameter.

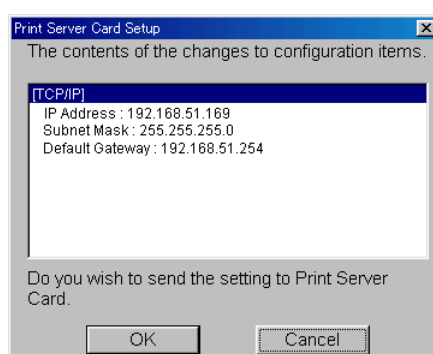


# Print Server Card Users Manual

2. Go to **TCP/IP** of Print Server Card Setup. This section is a very important part of set up in TCP/IP environment. Confirm with your network administrator before setting up. After all the parameters are filled, click **Update**.



3. The changes will be displayed. Confirm and click **OK**.



4. You will see the message **Restart Print Server Card**. Restart the printer.
5. Search with NICManager. Be sure that the Print Server Card with the new configuration is displayed. Configuration is complete.



TIP

\* You can not search for Print Server Card while it is being reset. Please wait a moment and search again.

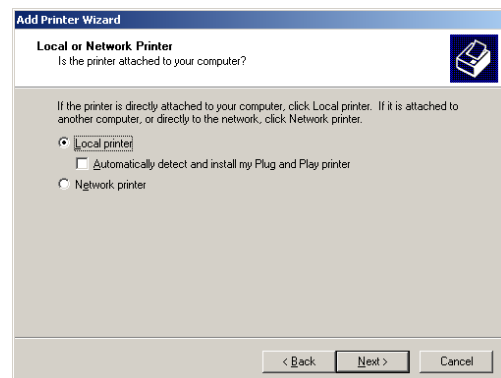
# Print Server Card Users Manual

## Print Using Standard TCP/IP Port of Windows 2000/XP

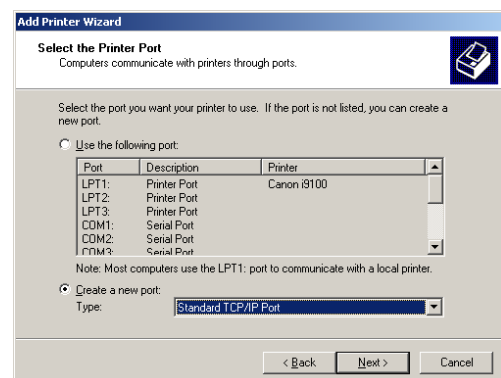
1. Go to **Start - Setting - Control Panel - Printers** and click **Add Printer** and start the wizard.



2. Select **Local Printer**. Be sure to remove the check from the **Automatically detect and install my Plug and Play printer**.



3. Add check on **Create a new port** in **Select the Printer Port** and create a new port. Select **Standard TCP/IP port** and click **Next**.  
If the destination print port was created when installing Print Server Card, select the port from **Use the following port** and click **Next**.



# Print Server Card Users Manual

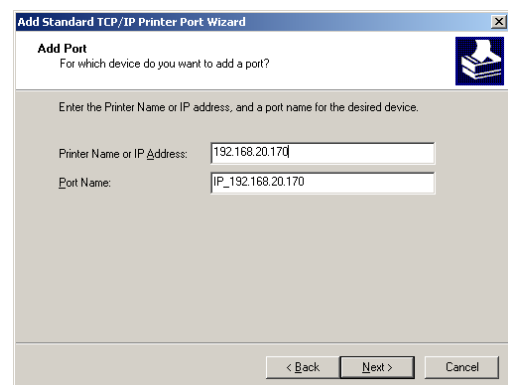
4. Add Standard TCP/IP Printer Port Wizard will be started.



5. Please add a printer port.

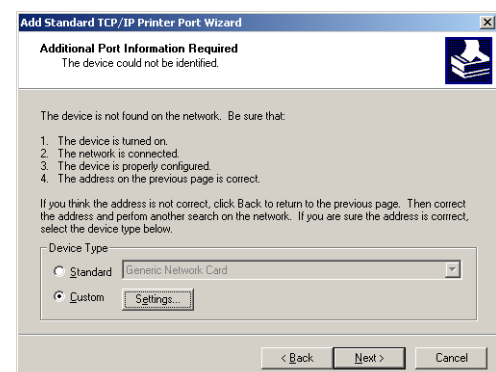
Please input the IP address of this product into the **Printer Name or IP Address**.

We recommend using a default (IP\_XXX.XXX.XXX.XXX) if you do not give any port name.



6. Identify the device type.

Check **Custom** and click **Settings**.

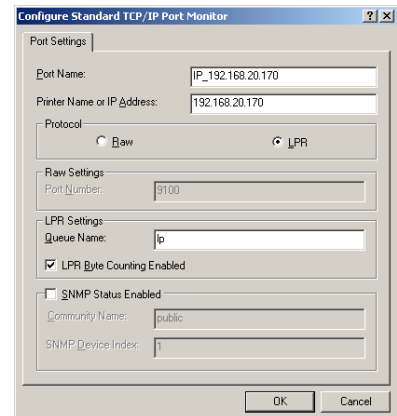


# Print Server Card Users Manual

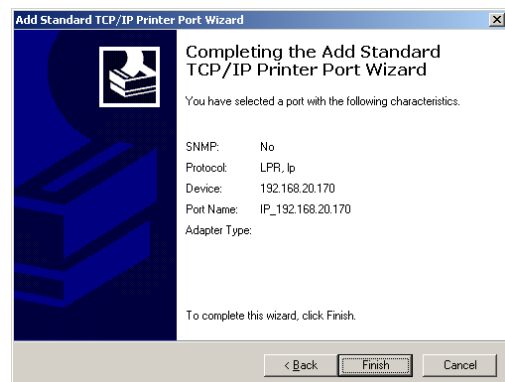
7. Please input Port information.

Please select the **LPR** in the **Protocol**.

Please input **lp** as the queue name in the **LPR Settings** field, and put a check mark at the **LPR Byte Counting Enabled**.



8. Verify the configuration.



# Print Server Card Users Manual

- At **Add Printer Wizard**, select the printer driver to be used. Click on **Next**.



\* When **Use Existing Driver** appears, select to keep existing driver or replace to new driver.

- At **Name your printer**, add the printer name to be used in Windows2000/XP. If necessary, add name of choice. Select to use this printer as normal printer or not, then click **Next**.
- Select **Share as** or **Do not share this printer** according to your environment on the **Printer Sharing**. If the printer is shared, type a share name. Click on **Next**.
- At the **Print test page**, put check in **Yes**. Click **Next**.
- The information of the configuration will be listed. If there are no mistakes, click on **Finish**. The new printer will be added to the list. If the test print is correct, the printer setup is complete.

# Print Server Card Users Manual

## Print from LPR in Windows2000/XP

This section explains how to print from Windows2000/XP using LPR.

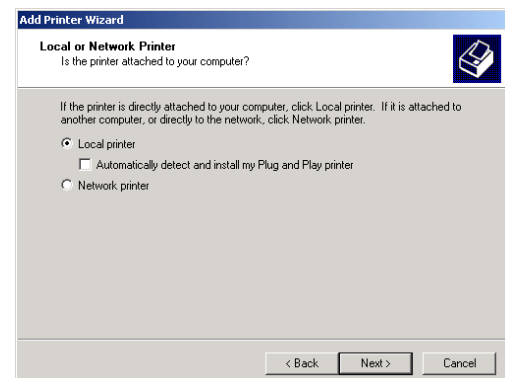


\* In order to print using LPR, LPR port must be added. Go to **Start - Settings - Control Panel - Add /Remove Programs - Add/Remove Windows Components** and open **Windows Components Wizard**. In Component select **Other Network File and Print Services**, click **Detail**, select **Print Services for Unix** and click **OK**. **Windows Component Wizard** will be displayed. After the component is added, click on finish. LPR port is added.

1. Go to **Start - Setting - Control Panel - Printers** and click **Add Printer** and start the wizard.



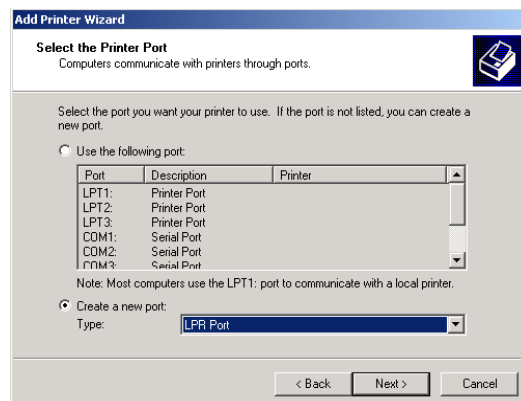
2. Select **Local Printer**. Be sure to remove the check from the **Automatically detect and install my Plug and Play printer**.



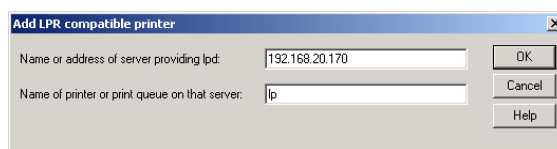
# Print Server Card Users Manual

3. Add check on **Create a new port** in **Select the Printer Port** and create a new port. Select **LPR Port** and click **Next**.

If the destination print port was created when installing Print Server Card, select the port from **Use the following port** and click **Next**.



4. At **Name or address of server providing lpd**, type in the IP address which was set to Print Server Card. At **Name of printer or print queue on that server**, add **lp** and click **OK**.



5. At **Add Printer Wizard**, select the printer driver to be used. Click on **Next**.



NOTE

- \* When **Use Existing Driver** appears, select to keep existing driver or replace to new driver.

6. At **Name your printer**, add the printer name to be used in Windows2000/XP. If necessary, add name of choice. Select to use this printer as normal printer or not, then click **Next**.
7. Select **Share as** or **Do not share this printer** according to your environment on the **Printer Sharing**. If the printer is shared, type a share name. Click on **Next**.
8. At the **Print test page**, put check in **Yes**. Click **Next**.
9. The information of the configuration will be listed. If there are no mistakes, click on **Finish**. The new printer will be added to the list. If the test print is correct, the printer setup is complete.

# Print Server Card Users Manual

## Adding an IPP Port of Windows2000/XP

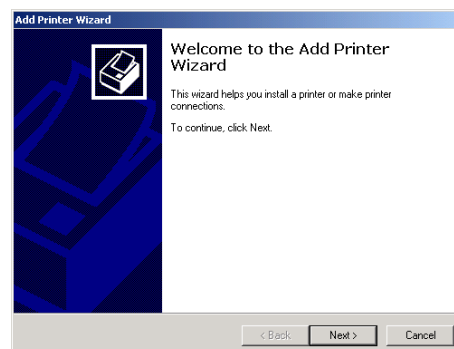
This section explains how to print using IPP function.



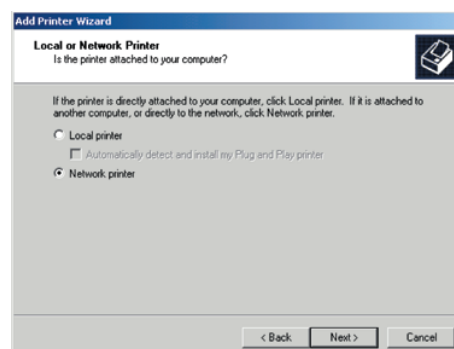
NOTE

\* Print Server Card is compatible to IPP. You can print data via the internet.

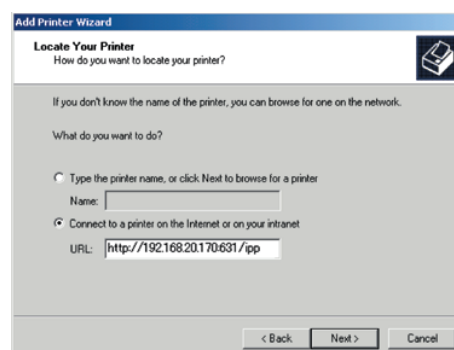
1. Go to **Start - Settings - Control Panel - Printers** and double click on **Add Printer**. **Add Printer Wizard** will start.



2. Select **Network Printer** for printer connection.



3. At **Locate Your Printer**, select **Connect to a printer on the internet or on your intranet** and assign URL of Print Server Card or the IP address. If **Printer Connection** appears, click on **OK**.



If the URL is "psc.abcd.com"

`http://psc.abcd.com:631/ipp/lp`  
or `http://psc.abcd.com:631/ipp`

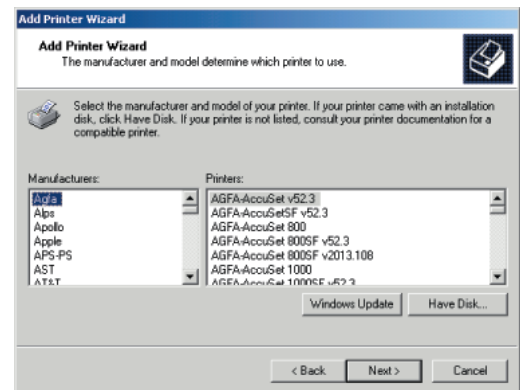
If the IP address is "192.168.20.170"

`http://192.168.20.170:631/ipp/lp`  
or `http://192.168.20.170:631/ipp`



# Print Server Card Users Manual

4. Select the printer driver for your printer and click **Next**.

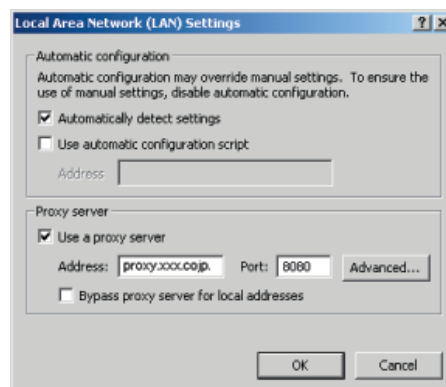


5. Select to use this printer as the default printer. Click **Next**. When setup is complete, click on **Finish**.



TIP

- \* To print via the proxy server, be sure to setup the proxy server on your WWW browser. In Internet Explorer4/5, below will be displayed.



# Print Server Card Users Manual

## Print in Windows95/98/Me Using NetBEUI

This section explains how to print using NetBEUI protocol in Windows 95/98/Me environment.

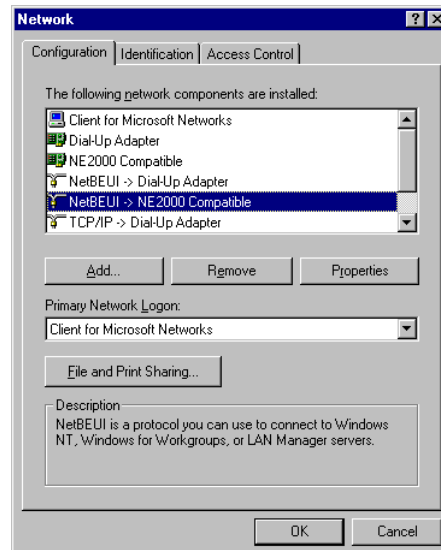


\* Be sure to use the correct printer driver for Windows95, Windows98 and WindowsMe.

### Setup Network

To print using NetBEUI protocol, you need to have *NetBEUI protocol* and *File and printer sharing for Microsoft Network* in the *Network Configuration*.

1. Go to **Start - Setting** and open **Control Panel**. Click on **Network** and at **Network Configuration**, add *NetBEUI protocol* and *File and printer sharing for Microsoft Network*.



# Print Server Card Users Manual

## Setup Print Server Card

This section explains how to set up Print Server Card in order to print using NetBEUI protocol.



- \* Some parameters can be set from a printer. Please refer to the manuals of printer for the details.

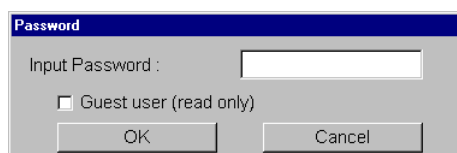
You can setup Print Server Card to enable or disable NetBEUI protocol. If you disabled NetBEUI protocol on the Quick Setup Wizard, you can use NICManager to enable it.



- \* You can install NICManager from Standard Setup of the CD-ROM.

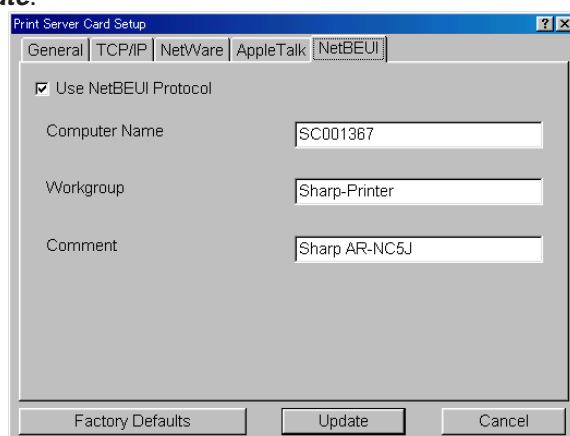
1. Start NICManager.
2. You will see the list of Print Server Card on the network.
3. Select the Print Server Card you want to set up from the list. Go to **Setup** and select **Print Server Card Setup**.

**Password** will be shown. You need to type a password and click **OK**. **Print Server Card Setup** will open.



- \* Password in Factory default is **Sharp**.
- \* You can see the configuration by selecting **Guest user** but you can not change the setup.

4. Go to **NetBEUI** of **Print Server Card Setup**. This section is a very important part of set up in TCP/IP environment. Confirm with your network administrator before setting up. After all the parameters are filled, click **Update**.



- \* If you decide to change the workgroup name, select the workgroup name that already exists in **Entire Network**.

# Print Server Card Users Manual

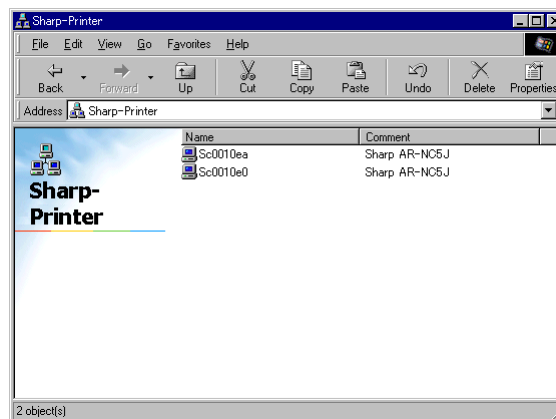
## Add Printer

1. Click on **Network Neighborhood** and open work group name **Sharp-Printer** in **Entire Network**. Click on computer (Print Server Card).

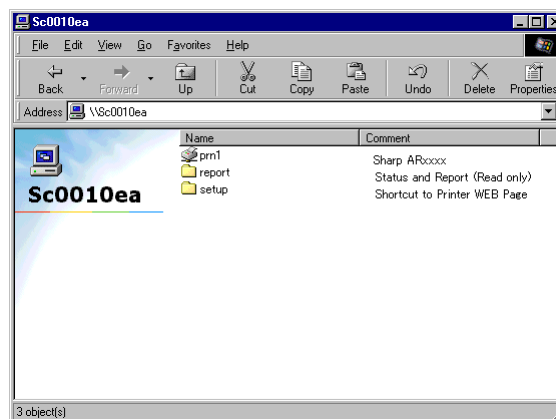


TIP

- \* It may require few minutes in order to detect Print Server Card. Wait for few minutes, then try again.
- \* The “xxxxxx” of “SCxxxxxx” is the last six digits of ethernet address of Print Server Card.



2. You will see a printer icon and two folders. Click on printer icon.



TIP

- \* For details on folders **report** and **setup**, refer to **Appendix - NetBEUI** in online manual.

3. If printer is not set, you will see a message asking if you would like to continue setting printer. Click **Yes**. If printer setup is completed, you will see a list of print job waiting.
4. Wizard will start. Follow the instruction. And then the printer will be added to the list. Try test print.

# Print Server Card Users Manual

## Print in WindowsNT4.0 Using NetBEUI

This section explains how to print using NetBEUI protocol in Windows NT4.0 environment.



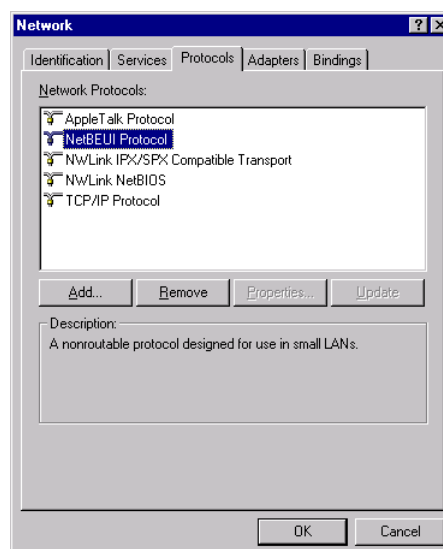
\* Be sure to use the correct printer driver for Windows NT4.0

TIP

### Setup Network

To print using NetBEUI protocol, you need to have NetBEUI protocol in the Network property.

1. Go to **Start - Setting** and open **Control Panel**. Click **Network** and add NetBEUI protocol to **Protocol**, and add computer browser to **Service**.



# Print Server Card Users Manual

## Setup Print Server Card

This section explains how to set up Print Server Card in order to print using NetBEUI protocol.



- \* Some parameters can be set from a printer. Please refer to the manuals of printer for the details.

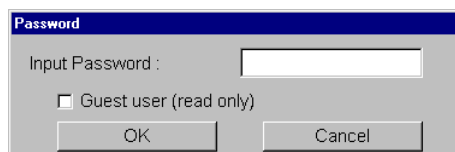
You can setup Print Server Card to enable or disable NetBEUI protocol. If you disabled NetBEUI protocol on the Quick Setup Wizard, you can use NICManager to enable it.



- \* You can install NICManager from Standard Setup of the CD-ROM.

1. Start NICManager.
2. You will see the list of Print Server Card on the network.
3. Select the Print Server Card you want to set up from the list. Go to **Setup** and select **Print Server Card Setup**.

**Password** will be shown. You need to type a password and click **OK**. **Print Server Card Setup** will open.

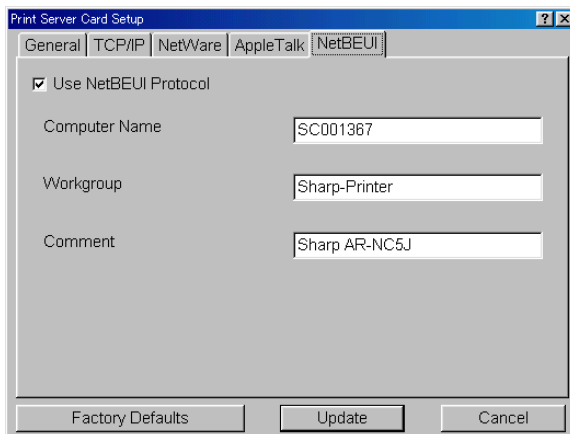


A small dialog box titled "Password" with a blue header. It contains a text field labeled "Input Password :", a checkbox labeled "Guest user (read only)", and two buttons at the bottom: "OK" and "Cancel".



- \* Password in Factory default is **Sharp**.
- \* You can see the configuration by selecting **Guest user** but you can not change the setup.

4. Go to **NetBEUI** of **Print Server Card Setup**. This section is a very important part of setup in TCP/IP environment. Confirm with your network administrator before setting up. After all the parameters are filled, click **Update**.



A dialog box titled "Print Server Card Setup" with a blue header and a close button. It has several tabs: "General", "TCP/IP", "NetWare", "AppleTalk", and "NetBEUI". The "NetBEUI" tab is selected. Inside the tab, there is a checkbox labeled "Use NetBEUI Protocol" which is checked. Below it are three text fields: "Computer Name" with the value "SC001367", "Workgroup" with the value "Sharp-Printer", and "Comment" with the value "Sharp AR-NC5J". At the bottom of the dialog are three buttons: "Factory Defaults", "Update", and "Cancel".



- \* If you decide to change the workgroup name, select the workgroup name that already exists in **Entire Network**.

# Print Server Card Users Manual

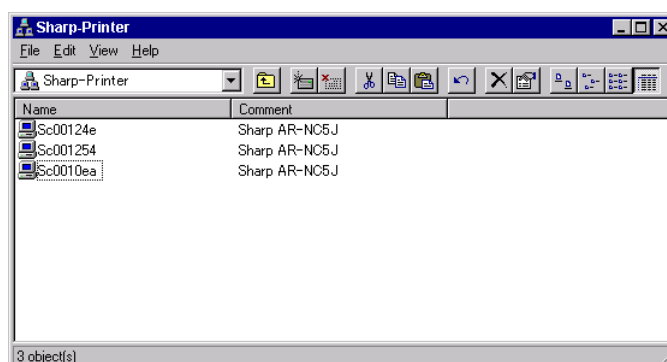
## Add Printer

1. Click on **Network Neighborhood** and open work group name **Sharp-Printer** in **Entire Network**. Click on computer (Print Server Card).

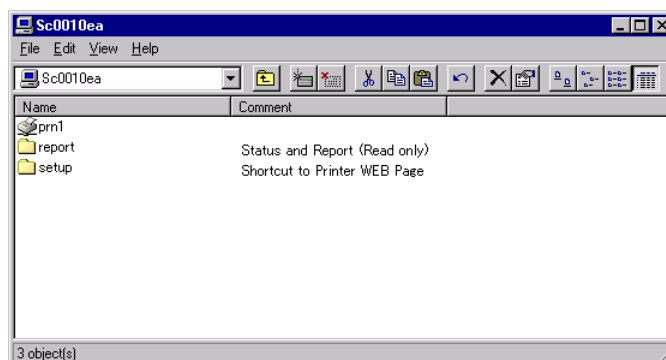


TIP

- \* It may require few minutes in order to detect Print Server Card. Wait for few minutes, then try again.
- \* The “xxxxxxx” of “SCxxxxxx” is the last six digits of Ethernet address of Print Server Card.



2. You will see a printer icon and two folders. Click on printer icon.



TIP

- \* For details on folders **report** and **setup**, refer to **Appendix NetBEUI** in online manual.

3. If printer is not set, you will see a message asking if you would like to continue setting printer. Click **Yes**. If printer set up is completed, you will see a list of print job waiting.
4. Wizard will start. Follow the instruction. The printer will be added to the list. Try test print.

# Print Server Card Users Manual

## Print in Windows2000 Using NetBEUI

This section explains how to print using NetBEUI protocol in Windows2000 environment.



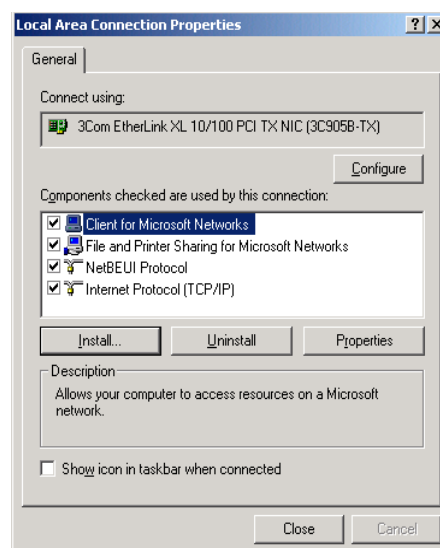
\* Be sure to use the correct printer driver for Windows2000

### Setup Network

To print using NetBEUI protocol, you need to have **NetBEUI protocol** and the **Client for Microsoft networks** in the Network property.

Setup in Windows2000

1. Go to **Start - Setting** and open property of **Local area network** in **Control Panel - Network and Dial up**. Add **NetBEUI protocol** and **Client for Microsoft networks**





# Print Server Card Users Manual

## Setup Print Server Card

This section explains how to set up Print Server Card in order to print using NetBEUI protocol.



- \* Some parameters can be set from a printer. Please refer to the manuals of printer for the details.

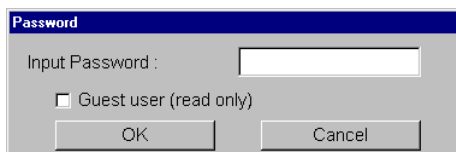
You can setup Print Server Card to enable or disable NetBEUI protocol. If you disabled NetBEUI protocol on the Quick Setup Wizard, you can use NICManager to enable it.



- \* You can install NICManager from Standard Setup of the CD-ROM.

1. Start NICManager.
2. You will see the list of Print Server Card on the network.
3. Select the Print Server Card you want to setup from the list.

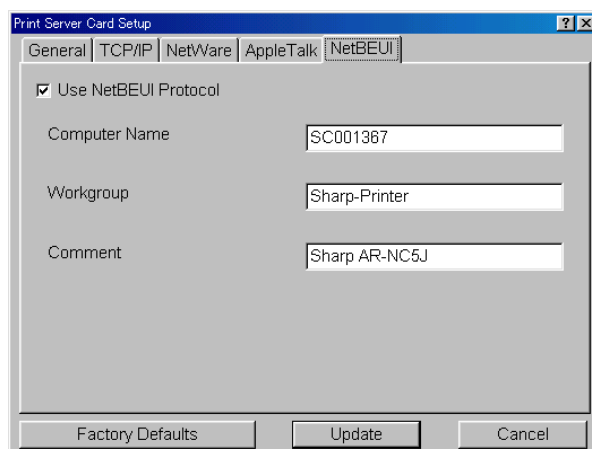
**Password** will be shown. You need to type a password and click **OK**. **Print Server Card Setup** will open.



TIP

- \* Password in Factory default is **Sharp**.
- \* You can see the configuration by selecting **Guest user** but you can not change the setup.

4. Go to **NetBEUI** of **Print Server Card Setup**. This section is a very important part of setup in TCP/IP environment. Confirm with your network administrator before setting up. After all the parameters are filled, click **Update**.



TIP

- \* If you decide to change the workgroup name, select the workgroup name that already exists in **Entire Network**.

# Print Server Card Users Manual

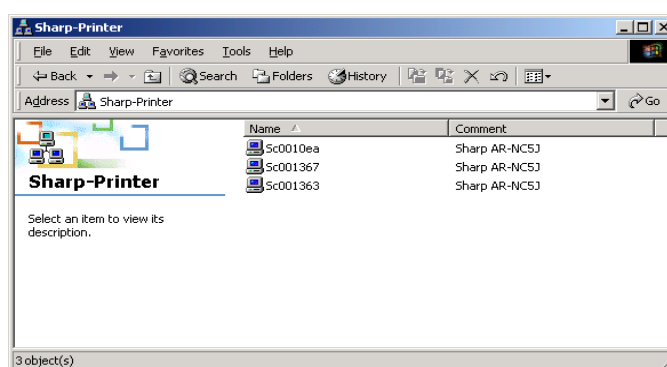
## Add Printer

1. Open **My Network - Entire Network** and display all on the network. Double click on **Microsoft Windows Network**, then open the workgroup where Print Server Card exists and double click on the icon of Print Server Card. (Displayed as an icon of computer)

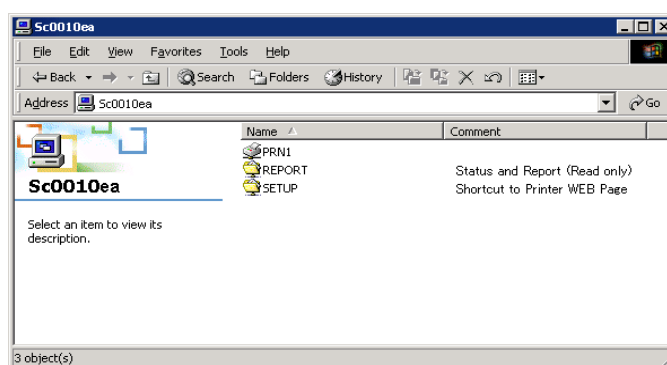


TIP

- \* It may require few minutes in order to detect Print Server Card. Wait for few minutes, then try again.
- \* The “xxxxxx” of “SCxxxxxx” is the last six digits of ethernet address of Print Server Card.



2. You will see a printer icon and two folders. Click on printer icon.



TIP

- \* For details on folders **report** and **setup**, refer to **Appendix NetBEUI** in online manual.

3. If printer is not set, you will see a message asking if you would like to continue setting printer. Click **Yes**. If printer setup is completed, you will see a list of print job waiting.
4. Wizard will start. Follow the instruction. The printer will be added to the list. Try test print.