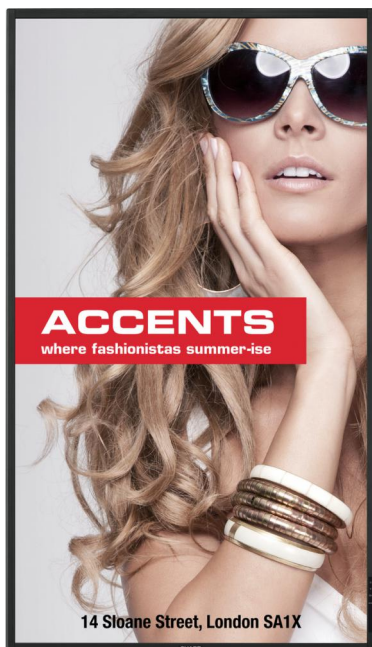


This is Why

- ▶ 55" (138,8 CM) DISPLAY FOR PROFESSIONAL 24/7 SIGNAGE
- ▶ 1920 X 1080 PIXELS WITH 700CD/M2
- ▶ BUILT-IN STEREO SPEAKERS 10 + 10W AND UV2A LCD TECHNOLOGY
- ▶ CONTRAST 4.000:1
- ▶ LED, EDGE LIT
- ▶ 24 / 7 OPERATION
- ▶ HDMI AND DISPLAYPORT
- ▶ LANDSCAPE & PORTRAIT INSTALLATION SUPPORT



Designed for maximum impact, built for 24/7 durability, and sized for flexible installation, the PN-U553 represents a dynamic new breed of indoor digital signage solutions. Thin and lightweight enough for easy installation in stores, offices, and public spaces, this monitor boasts the outstanding image quality needed to deliver truly compelling digital signage.

DISPLAY MODULE DATA

- ▶ Panel Technology: **LCD UV2A**
- ▶ Native Resolution (Pixels): **1920 X 1080**
- ▶ Diagonal Size (inches / cm): **55/138.8**
- ▶ Aspect Ratio: **16:9**
- ▶ Backlight Technology: **EDGE LED**
- ▶ Brightness (cd/m2): **700**
- ▶ Contrast Ratio: **4000:1**
- ▶ Display Colours: **1.06b**
- ▶ Response Time (grey to grey avg) ms: **6.5**
- ▶ Viewing Angle (H/V)0 CR >10: **178/178**

POWER SUPPLY AND OPERATING ENVIRONMENT

- ▶ Operating Voltage(ACV) / Frequency(Hz): **100 - 240/50-60**
- ▶ Power Consumption (W) (Operating MAX): **130**
- ▶ Power Consumption (W) (Standby): **0.5**
- ▶ Operating Temperature (oC): **5 - 40**
- ▶ Humidity (%): **20 - 80**
- ▶ Heat Dissipation (BTU/h) MAX: **443.6**

WEIGHTS AND MEASURES

- ▶ Bezel Size (L/R) mm: **19**
- ▶ Bezel Size (U/L) mm: **19**
- ▶ Product Dimensions (W/H/D) mm: **1250/721/57**
- ▶ Product Weight Without Stand (Kg): **25**

CONNECTIVITY (AUDIO/VIDEO) INPUT

- ▶ HDMI: **1**
- ▶ DVI-D: **1**
- ▶ DisplayPort: **1**
- ▶ VGA: **1**
- ▶ Component: **1**
- ▶ Composite: **1**
- ▶ Audio 3.5mm Jack: **1**
- ▶ Audio RCA R-L: **1**

CONNECTIVITY (CONTROL/SERIAL DATA)

- ▶ RS232C IN: **1**
- ▶ RS232C OUT: **1**
- ▶ LAN Port: **1**

KEY SPECIFICATIONS

- ▶ 24/7 Operation Certified: ✓
- ▶ Built in Speakers (W): **10 X 10**
- ▶ Computer Input - Plug and Play: ✓
- ▶ Power Management: ✓
- ▶ Cabinet Colour: **BLACK**
- ▶ Fanless: ✓
- ▶ Multi-Screen Function - Videowall Mode (Enlarge Feature): ✓
- ▶ Daisychain (Mirror mode): ✓
- ▶ Hardware Diagnosis: ✓
- ▶ Monitor Control Software Support: ✓

SAFETY AND ENVIRONMENT (EUROPE)

- ▶ CE, CB Report: ✓
- ▶ Mercury Content (mg): **0**
- ▶ Presence of Lead (Accepted application of RoHS Directive): ✓

INSTALLATION

- ▶ Landscape: ✓
- ▶ Portrait: ✓
- ▶ Mounting (VESA/Number of Points/Pitch mm): **4/400mm X 200mm**

CONNECTIVITY (AUDIO/VIDEO) OUTPUT

- ▶ DVI-D: **1**
- ▶ Audio RCA R-L: **1**

www.sharp-cee.com

SHARP

HEADQUARTERS SHARP CENTRAL & EASTERN EUROPE
A-1020 VIENNA
HANDELSKAI 342
AUSTRIA
PHONE: +43 1 72719-0
FAX: +43 1 72719-289
INTERNET: WWW.SHARP-CEE.COM